

LEGEND:  
 A = 5/8" IRON BAR SET  
 B = 1" IRON BAR FD.

PIKE AVE. (30')



SURVEY OF LOTS 34 THROUGH 38 B  
 IN OLD MIDWAY PLACE, SEC. 35, T. 6 S.,  
 R. 8 E., STOKES TOWNSHIP, LOGAN  
 COUNTY, OHIO FOR LARRY SCHROEDER.  
 MAY, 1989  
 SCALE: 1" = 40'

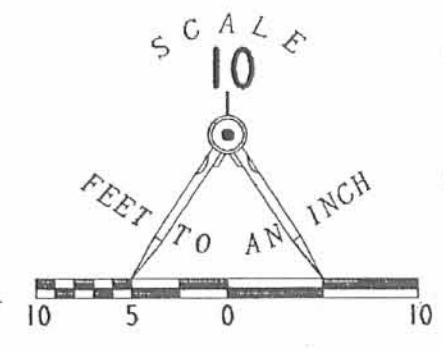
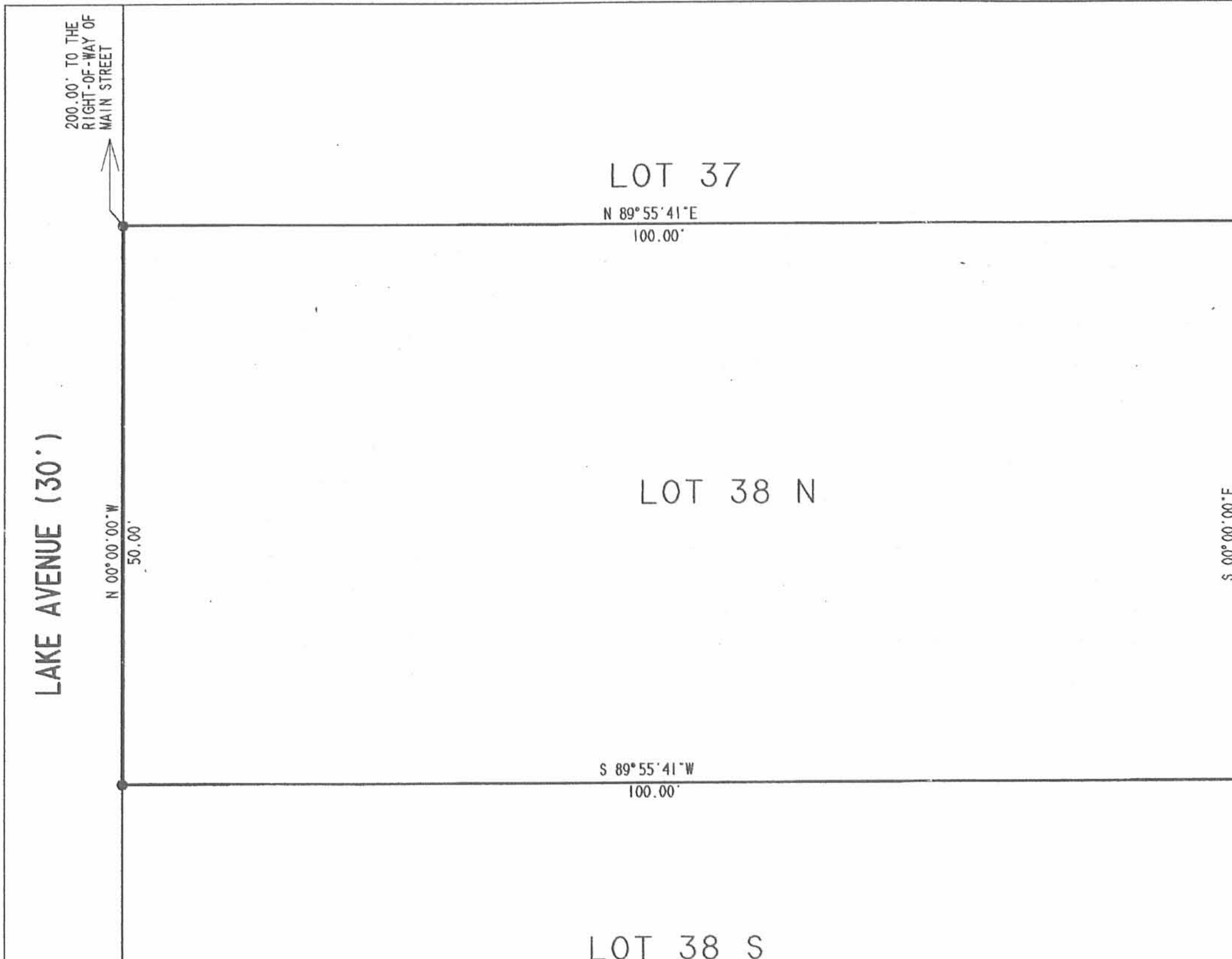
*Leslie H. Geeslin*  
 LESLIE H. GEESLIN  
 RUSHSVANIA, OHIO

INDEXED ON MAP  
 9453

1P

RECD 9-303 8M/0K

R



LEGEND:  
 ● 5/8 INCH IRON ROD SET

RETRACEMENT SURVEY OF  
 LARRY F. SCHROEDER  
 LOT 38 A OF THE  
 OLD MIDWAY PLACE  
 PLAT CABINET A, SLIDE 203  
 STOKES TOWNSHIP  
 LOGAN COUNTY, OHIO

SURVEYED BY: \_\_\_\_\_



*Jeffrey I. Lee*  
 JEFFREY I. LEE  
 PROFESSIONAL SURVEYOR 6359  
 AUGUST 25, 2003

COPYRIGHT 2003 BY:  
 LEE SURVEYING & MAPPING CO., INC.  
 117 North Madriver Street  
 BELLEFONTAINE, OHIO 43311  
 (937) 593-7335

ORIGINAL STAMP IN GREEN

D 411 L3648 L-3648-3

2 WORKING DAYS  
**BEFORE YOU DIG**  
 CALL TOLL FREE **800-362-2764**  
 OHIO UTILITIES PROTECTION SERVICE.

INDEXED ON MAP  
 9453

2P