

Received 4-5-02 OK gch

# Lee Surveying and Mapping Co., Inc.

Land Surveys • Topography • Subdivisions • Construction Layout

117 N. Madriver St.  
Bellefontaine OH 43311



Phone: (937) 593-7335  
Fax: (937) 593-7444

## KERNS 4.000 ACRES

Lying in Section 4, Town 4, Range 13, Union Township, Logan County, Ohio.

Being out of the Rodney A. Kerns 123.827 acre tract as deeded and described in Official Record 439, Page 413 of the Logan County Records of Deeds and being more particularly described as follows:

Beginning at a P.K. nail found on the northwest corner of Section 4 at the intersection of the center-lines of Ohio Route 508 and County Highway 187.

THENCE, with the west line of Section 4 and the center-line of County Highway 187 (40 feet wide), S 4°-01'-13" W, a distance of 763.14 feet to a MAG nail set at the TRUE POINT OF BEGINNING.

THENCE, S 86°-06'-32" E, a distance of 618.53 feet to a 5/8 inch iron rod set, passing a 5/8 inch iron rod set at 20.00 feet.

THENCE, S 4°-01'-13" W, a distance of 281.70 feet to a 5/8 inch iron rod set.

THENCE, N 86°-06'-32" W, a distance of 618.53 feet to a MAG nail set, passing a 5/8 inch iron rod set at 598.53 feet.

THENCE, with the west line of Section 4 and the center-line of County Highway 187, N 4°-01'-13" E, a distance of 281.70 feet to the point of beginning.

Containing 4.000 acres, of which 0.129 acre is within the highway right-of-way.

The basis for bearings is the north line of Section 4, being S 86°-00'-20" E, and all other bearings are from angles and distances measured in a field survey by Lee Surveying and Mapping Co., Inc. on April 1, 2002.

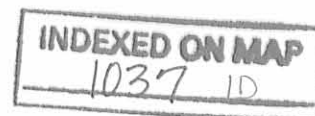
Description prepared by:



ORIGINAL STAMP IN GREEN

Jeffrey I. Lee  
Professional Surveyor 6359  
April 4, 2002

L-2298



11 5  
10 4

0.112 ACRES

S 86°00'20"E (BASIS FOR BEARINGS) (60°)

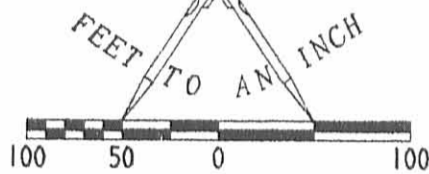
508

1.0 ACRE

1.081 ACRES

1.081 ACRES

SCALE  
100



LEGEND

- 5/8 INCH IRON ROD SET
- ⊙ MAG NAIL SET
- P.K. NAIL FOUND

COUNTY HIGHWAY 187 (40')

S 04°01'13"W  
763.14'

SURVEY OF 4.000 ACRES  
 OUT OF THE RODNEY A. KERNS  
 123.827 ACRE TRACT  
 OFFICIAL RECORD 439, PAGE 413  
 SECTION 4, TOWN 4, RANGE 13  
 UNION TOWNSHIP  
 LOGAN COUNTY, OHIO

RODNEY A. KERNS  
 123.827 ACRES  
 O.R. 439, PG. 413

20.00'

S 86°06'32"E  
618.53'

4.000 ACRES  
 OF WHICH 0.129 ACRE IS WITHIN  
 THE HIGHWAY RIGHT-OF-WAY

N 04°01'13"E  
281.70'

281.70'  
S 04°01'13"W

20.00'

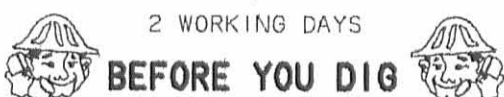
618.53'  
N 86°06'32"W



SURVEYED BY:

*Jeffrey I. Lee*  
 JEFFREY I. LEE  
 PROFESSIONAL SURVEYOR 6359  
 APRIL 1, 2002

COPYRIGHT 2002 BY:  
 LEE SURVEYING & MAPPING CO., INC.  
 117 North Madriver Street  
 BELLEFONTAINE, OHIO 43311  
 (937) 593-7335



2 WORKING DAYS

BEFORE YOU DIG

CALL TOLL FREE 800-362-2764  
 OHIO UTILITIES PROTECTION SERVICE.

ORIGINAL STAMP IN GREEN

INDEXED ON MAP

1037 IP

D 401

JYODER6

L-2298-3

N $\frac{1}{2}$  SEC. 4-4-13

Co. Surv. Record "B" p 29

A.A. Harbison, Oct. 1845.

Burr Oak 24' S43E, 17  
White Oak 20' S44W, 10

Bottom Oak 12' N52E, 17

321.4

325.61 a. in N $\frac{1}{2}$  of Sec.

163 p.

Stone

321.8 p.

Stone

160.7

161.80 a.

80.4

160.4

Stone

322.5 p.

Stone

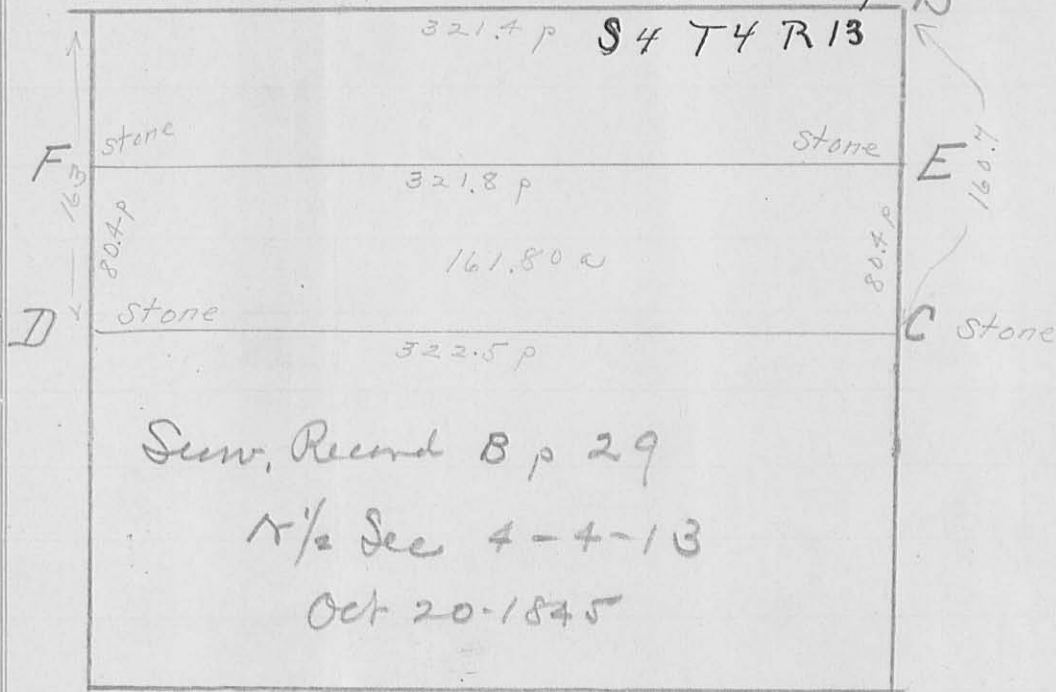
1037

(1037) 3D-1

①

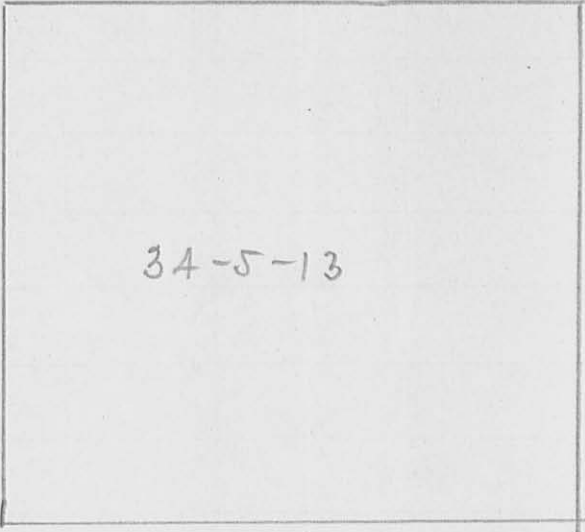
INDEXED ON MAP

Burr Oak, 24" S43 E, 17 lbs  
A White Oak 20", S44W, 10 lbs  
Dr Hemming  
Union Tap  
Bottom Oak, 12", N52 E, 17



A (NW 1/4 Sec) from Sew. Record B, p 124, Survey  
by Oden Hayes, Stone planted 4/29/1848  
Wit:- S44W, 10 lbs; White Oak 20"

2



34-5-13

Record A. p. 282, calls for stone, cont. S. line of Sec

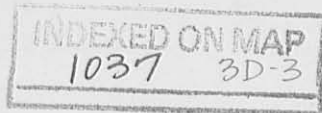
INDEXED ON MAP  
1037 3D-2

David D Yoder to  
Andrew J Hudson

94-579

Oct 18, 1900

Pt Sec 34-5-13



Begin stone NW $\angle$  said Sec.

- with N. line Sec S 85 $\frac{1}{2}$  E, 14.16 ch to stone
  - S 4 W, 28.36 ch to stone in N. line Peter Harner
  - with said line, N 85 $\frac{1}{2}$  W, to stone in W. line of Sec  
at NW $\angle$  said Harner
  - with Sec. line N 4 E, 28<sup>58</sup> ch to begin = 40<sup>31</sup> a
- Also - Pt 4-4-13

- Begin stone NE $\angle$  sec. — N 85 $\frac{1}{2}$  W, with Sec line, 10<sup>00</sup>  
ch to stone. — S 4 W, 20.47 ch to stone, N. line Amos Yoder
- with said line S 85 $\frac{1}{2}$  E, 10<sup>00</sup> $\frac{1}{2}$  ch to stone, E. line Sec
  - with Sec line, N 4 E, 20.41 to begin = 20.75 a

Jno K Yoder & } 95-350 Jan 19/01

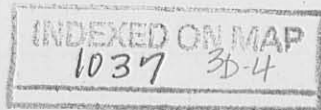
Amos M Yoder

4

Undivided  $\frac{1}{4}$  of - Pt Sec 4-4-13

Begin, stone in N. line of Sec.

- N  $85\frac{1}{2}$  W, 39.74 ch to stone
- S 4 W, 20.69 .. to stone, n. line J.K. AM Yoder
- with said line, S  $85\frac{1}{2}$  E, 39.76 ch to stone
- N 4 E, 20.47 ch to begin =  $81\frac{5}{8}$  a



Malcott to  
Geo A. Alcott } 100 - 323

(5)

E 1/2 SE Qr Sec. 4 - 4 - 13

Also pt SW Qr 34 - 5 - 13

- Begin SW of said Qr Sec
- east 20 poles
- north 160 poles to state
- west 20 poles to state
- south 160 poles to begin = 20 acres

INDEXED ON MAP  
1037 3D-5



(6)

Cockrell et al. }  
Josiah Allcott } F, 134

E 1/2 of SE qr Sec 4-4-13  
also

W 1/2 of SE qr Sec 4-4-13  
also

pt SW qr, Sec 34-5-13

Begin SW of said qr

- E. 20 poles, - N 160 poles  
- W 20 poles, - S 160 poles = 20 acres

INDEXED ON MAP  
1037 3D-4

John B. Godert  
John F. Ett

49-56

Jan 28/71

(7)

SW or Sec 4-4-13

Except 1 acre out of SW & said gr  
also 15 acres out of NW & said gr, being  
4 rods E & W, <sup>and</sup> 60 rods N <sup>and</sup> S

INDEXED ON MAP  
1037 3D-7

John T

Alcott	13-4-4	3	68.50
Same	13-5-34	10	20.00
Allcott Anna E	13-4-4-	4	44.25
Henning Nancy V.	13-4-4	5	44.25
Hudson Andrew J	13-4-4	✓ 1 <sup>94-579</sup>	20.50
Goder Amos M	13-4-4	6	58.00

Liberty - Union Tp. in dispute

Alcott Geo. A. 100-323 ✓

INDEXED ON MAP  
1037 3D-B

Alcat to Nancy Bell Henning

Pt. SE Qr, Sec 4-4-13

} from deed  
not recorded  
1874

Begin stone in Co. road, SW $\angle$  said Qr

— with cent road, S 87 $\frac{1}{2}$  E, 11.37 to pt. in center  
road, with: - Burr oak, 36", N 41 $\frac{1}{2}$  W, 28 lbs

Elm bush in line 36 lbs

— N 2 $\frac{1}{2}$  E, 40.60 to stake in N. line Qr sec

with: - cottonwood 48", S 26 $\frac{1}{2}$  W, 7 poles

Burr oak 24", ( ? ) 8 poles 11 lbs

— N 87 $\frac{1}{2}$  W, 11.27 to NW $\angle$  said Qr

— S 2 $\frac{1}{2}$  W, 40.75 to begin = 45.97

INDEXED ON MAP

1037 30-9

Jno. Fett  
SW Qr  
Ex 15 acres

4

(4)

(5)

(5)

(3)

(3)

(2)

3.4

100'

K. 16

20.47

20.47

1000 1/2

28.176

Hudson

20

160

160

Co-Line Mon.

INDEXED ON MAP  
1037 3P