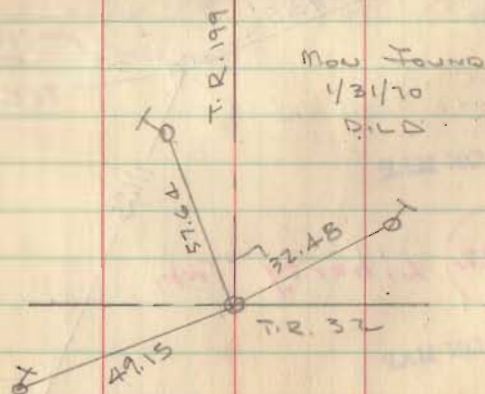


West end Road 199 at road 32



Stamped Nov 19 1942 R.H.R.



Gl. Inskoop  
F. Hurst  
R. W. Saurcy  
9-14-42

7

Rd 199 -  $\frac{1}{4}$  Cor 142 T3R14

Found large boulder

Set concrete Mort 6" below surface



INDEXED ON MAP

2623

Liberty  
&  
Union Twp's.

INDEXED ON MAP