

End of Road 201 at 43



Stamped. Nov 19 1942 RMR.

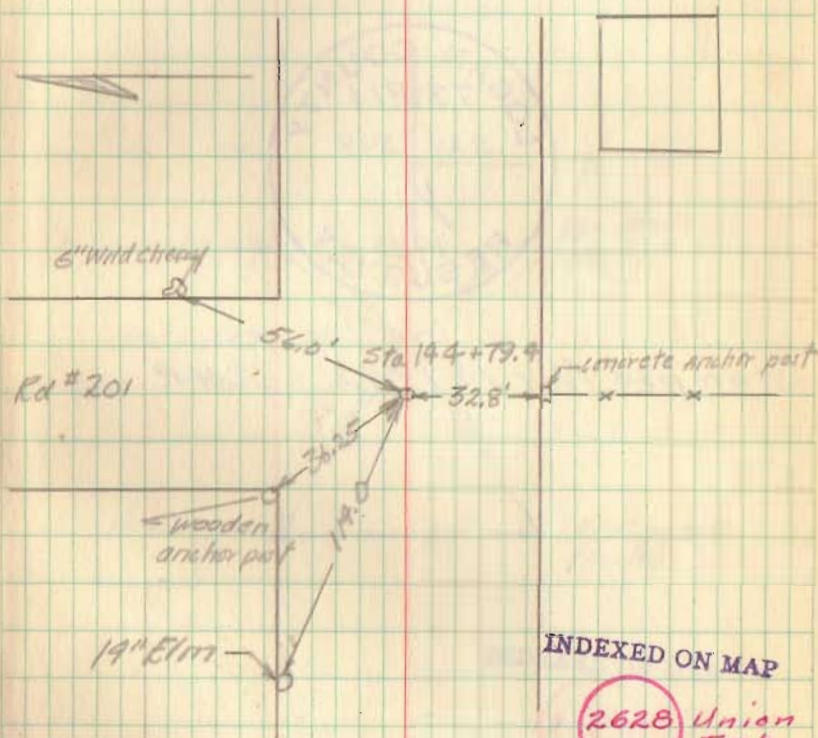
GC Inskip
FHurst
R.M. Garvey
9-17-42

12

Rd 43. Cor 13, 14, 19, 20 T3 R14

Found stone on top of another
(neither large) also broken brick

Set concrete 1700 8" below surface



Elevation: 1071.84