

Richard L. Yoder Survey
March, 1977

Being situated in Union Township, Logan County, Ohio; and being a part of Section 16, Town 4, Range 13, M.R.S

Beginning at an iron at the southwest corner of Section 16.

Thence with the west line of Section 16 N 3°-44' E 2638.0 feet to a corner post at the quarter section corner.

Thence with the quarter section line S 85°-48' E 1384.0 feet to a post.

Thence with the east line of a 80.87 acre tract N 3°-36' E 2582.5 feet to an iron.

Thence with the south line of a cemetery S 85°-30' E 366.0 feet to a corner post.

Thence with the east line of the cemetery N 4°-02' E 94.5 feet to a point in the north line of Section 16 (also the center line of State Route 508).

Thence with the north line of Section 16 S 85°-30' E 380.5 feet to an iron.

Thence S 4°-05' W 4778.5 feet to an iron in the north line of a 13.40 acre tract.

Thence with said north line of a 13.40 acre tract N 85°-55' W 454.0 feet to a post.

Thence with the west line of said 13.40 acre tract S 4°-08' W 528.0 feet to a point in the south line of Section 16.

Thence with the south line of Section 16, N 85°-55' W 1638.0 feet to the place of beginning.

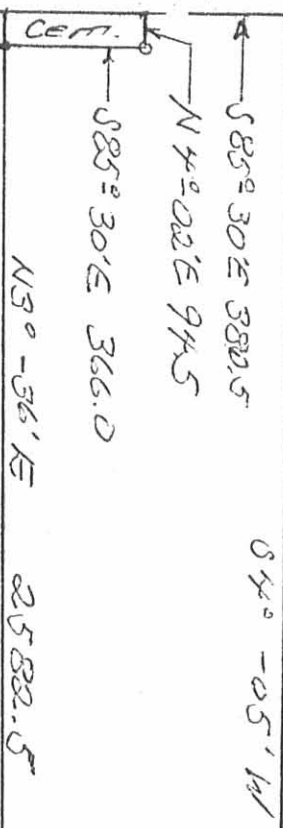
Containing 165.98 acres more or less. Of this 44.38 acres is from a 83.33 acre tract. The remaining 121.60 acres is from a 154.60 acre tract.

Owen K. Shirk
Surveyor 4271

INDEXED ON MAP
6018 ID

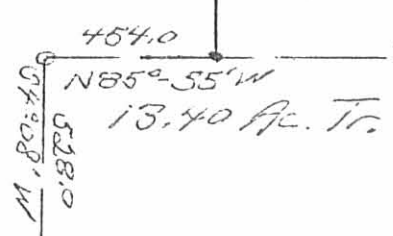
RICHARD L. YODER SURVEY
 UNION TWP, LOGAN CO., OHIO
 SECTION 16, TOWN 4, RANGE 13, M.R.S. - 1"=500'

"N" line of Sec. 16 & St. Rt. 5082



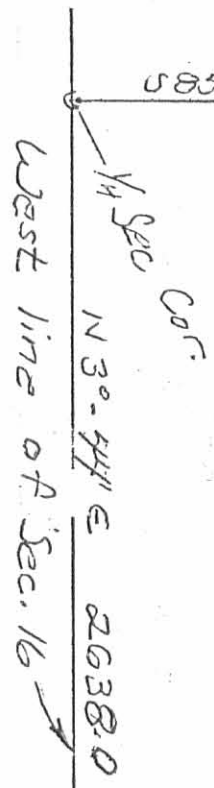
30.87 Ac. Tr.

165.98 Ac.



"S" line of Sec. 16

DAVID K. SHANK
 SURVEYOR #871
 MARCH, 1977



S.W. Cor. of
 Sec. 16

6018 IP

INDEXED ON MAP