

Lee Surveying and Mapping Co.



Farm Surveys • Lot Surveys • Topography • Subdivisions • Construction Layout

855 EAST SANDUSKY AVENUE
BELLEFONTAINE, OHIO 43311

(513) 593-5780

CLAYTON M. LEE, P.S.
JEFFREY I. LEE, P.S.

PAGE 1.

LAND USE BREAK-DOWN OF THE ARDEN NEER 119.12 ACRES (VOLUME 396, PAGE 871, TRACT 1, PARCEL 1); THE 80 ACRES (VOLUME 396, PAGE 871, TRACT 2, PARCEL 2); THE 44 ACRES (VOLUME 396, PAGE 871, TRACT 2, PARCEL 5). ALL PARCELS LYING IN SECTION 24, T-4, R-13, UNION TOWNSHIP, LOGAN COUNTY, OHIO.

The commercial area of that 119.12 acres described as follows:

Beginning at a spike found on the center-line of Township Road 45 marking the northeast corner of a 3 acre tract and being a northeast corner of said 119.12 acres.

THENCE, with the west line of said 3 acre tract, S 5°-00' W, a distance of 660.0 feet to the southwest corner of said 3 acre tract.

THENCE, with the south line of said 3 acre tract, S 85°-00' E, a distance of 198.0 feet to a point on the quarter-section line at the southeast corner of said 3 acres.

THENCE, with said quarter-section line, S 4°-15' W, a distance of 460.0 feet.

THENCE, N 85°-45' W, 285 feet.

THENCE, N 4°-15' E, 120 feet.

THENCE, N 85°-45' W, 180 feet.

THENCE, S 4°-15' W, 285 feet to the north bank of Stoney Creek.

THENCE, with said north bank, N 58°-10' W, 271 feet.

THENCE, N 4°-15' E, 140 feet.

THENCE, N 46°-00' W, 500 feet.

THENCE, N 30°-00' E, 250 feet.

THENCE, S 60°-00' E, 370 feet.

THENCE, N 5°-00' E, 420 feet.

THENCE, S 86°-45' E, 410 feet.

THENCE, N 5°-00' E, 210 feet to the center-line of Township Road 45.

THENCE, with center-line, S 86°-45' E, 40.0 feet to the point of beginning. Containing 15.12 acres, leaving 104.00 acres in the agriculture area.

The commercial area, as now being excavated, in that 44 acre tract (Volume 396, Page 871, Tract 2, Parcel 5) being described as follows:

Beginning at a point on the west line of said 44 acre tract, a distance of 175 feet north of the southwest corner of said 44 acres and thence, easterly, parallel to the south line, a distance of 500 feet to the point of beginning.

6864 1D-1

INDEXED ON MAP

C.M.L.

Lee Surveying and Mapping Co.



Farm Surveys • Lot Surveys • Topography • Subdivisions • Construction Layout

855 EAST SANDUSKY AVENUE
BELLEFONTAINE, OHIO 43311

(513) 593-5780

CLAYTON M. LEE, P.S.
JEFFREY I. LEE, P.S.

PAGE 2.

THENCE, N 14°-00' E, a distance of 100.0 feet.
THENCE, S 76°-00' E, a distance of 350.0 feet.
THENCE, S 14°-00' W, a distance of 100.0 feet.
THENCE, N 76°-00' W, a distance of 350.0 feet to the point of beginning. Containing 0.8 acres, along with a 40 foot wide drive used for the removal of granular materials and running east and west completely through said 44 acre tract and containing 1.2 acres. Making a total of 2.0 acres in commercial area and leaving 19.7 acres of area in waste land and 22.3 acres in agriculture area.

The commercial area, as now being excavated, in that 80 acre tract, (Volume 396, Page 871, Tract 2, Parcel 2) being described as follows:

Beginning at a point 500 feet south of the northeast corner of Section 24.

THENCE, West, 100 feet to the point of beginning.

THENCE, South, parallel to the east section line, 500 feet.

THENCE, West, 100 feet.

THENCE, North, parallel to the east line, 500 feet.

THENCE, West, 100 feet to the point of beginning. Containing 1.15 acres, along with a 40 foot wide drive running from the west line of said 80 acres to the above described 1.15 acres, containing 1.1 acres. Making a total of 2.25 acres in commercial area and leaving 10.75 acres in waste land and 67.0 acres in agriculture area.

SUMMARY

119.12 ACRE TRACT

15.12 Acres commercial
104.0 acres agricultural

44 ACRE TRACT

2.0 acres commercial
19.7 acres waste land
22.3 acres agricultural

80 ACRE TRACT

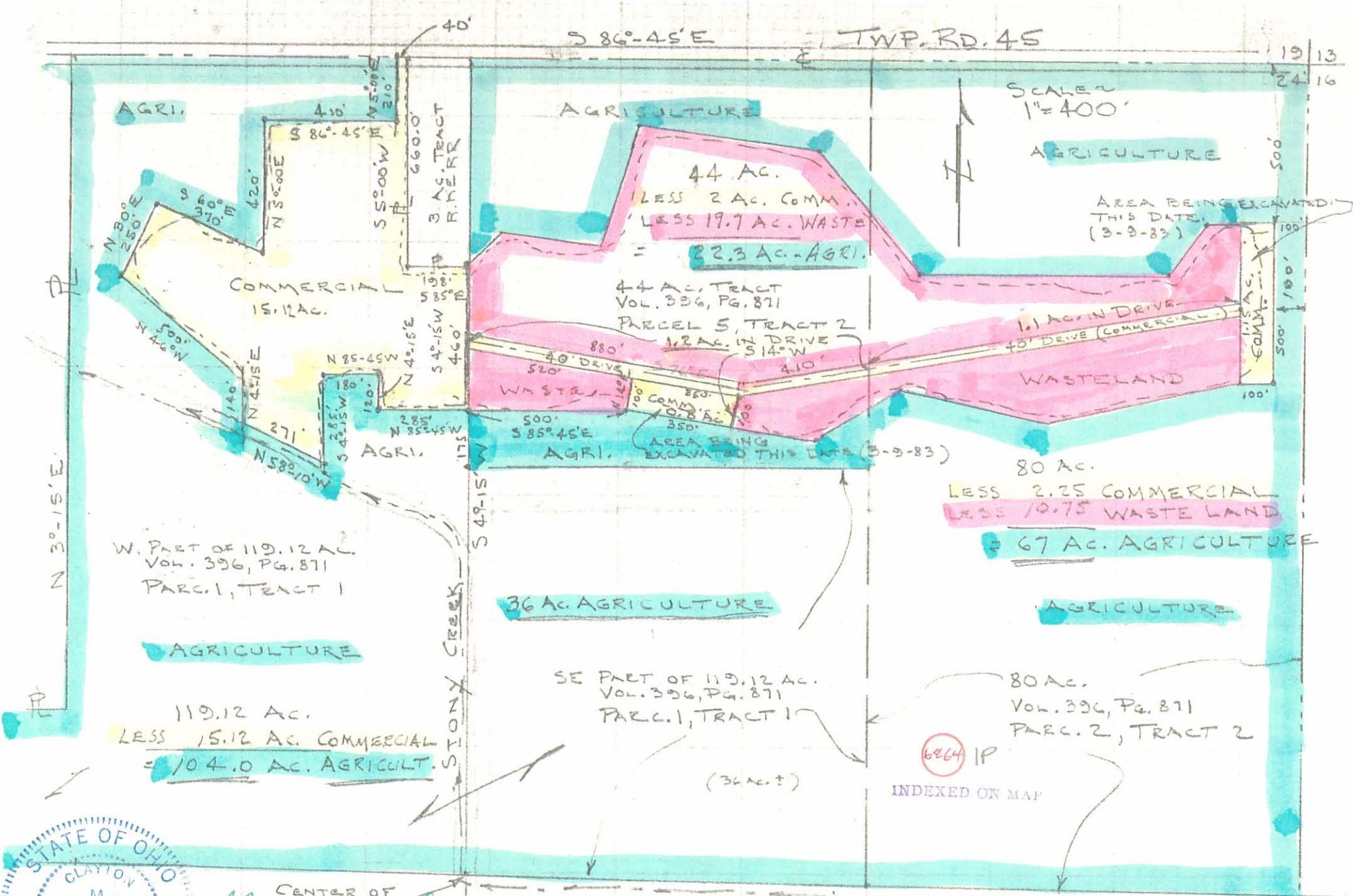
2.25 acres commercial
10.75 acres waste land
67.0 acres agricultural

(6864) 1D-2

INDEXED ON MAP

Prepared by:

Clayton M. Lee
Reg. Surveyor No. 6181
MAR. 9, 1983



19 | 13
24 | 16

SCALE ~
1" = 400'

AGRI.

AGRICULTURE

AGRICULTURE

AREA BEING EXCAVATED
THIS DATE
(3-9-83)

44 AC.
LESS 2 AC. COMM.
LESS 19.7 AC. WASTE
= 22.3 AC. - AGRI.

COMMERCIAL
15.12 AC.

44 AC. TRACT
VOL. 396, PG. 871
PARCEL 5, TRACT 2
1.2 AC. IN DRIVE
514' W

WASTELAND

W. PART OF 119.12 AC.
VOL. 396, PG. 871
PARC. 1, TRACT 1

36 AC. AGRICULTURE

80 AC.
LESS 2.25 COMMERCIAL
LESS 10.75 WASTE LAND
= 67 AC. AGRICULTURE

AGRICULTURE

AGRICULTURE

119.12 AC.
LESS 15.12 AC. COMMERCIAL
= 104.0 AC. AGRICULT.

SE PART OF 119.12 AC.
VOL. 396, PG. 871
PARC. 1, TRACT 1

80 AC.
VOL. 396, PG. 871
PARC. 2, TRACT 2

6864 IP

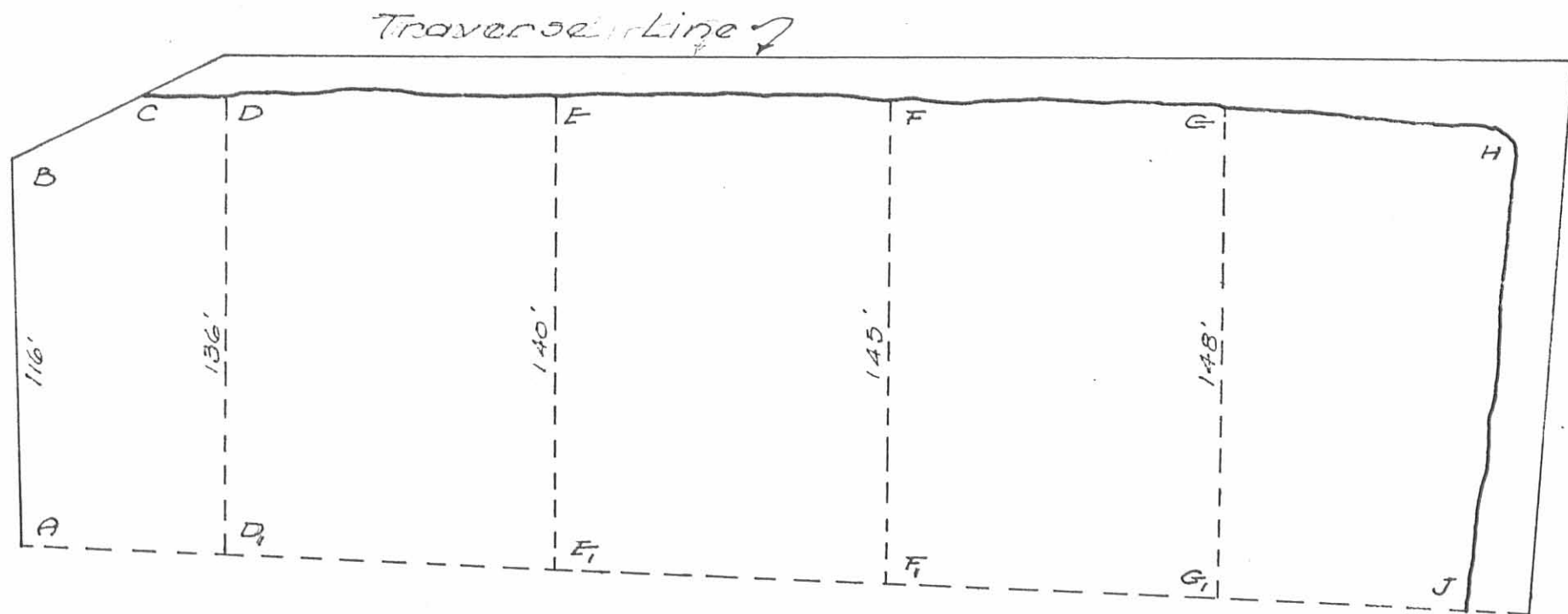
INDEXED ON MAP

(36 AC.?)



CENTER OF
SEC. 24
Clayton M. Lee
CLAYTON M. LEE
REG. SURVEYOR 6181
3-9-83

LAND USE BREAK-DOWN OF 3 TRACTS OF LAND.
ARDEN NEAR VOL. 396, PG. 871 (PARCELS 1, TRACT 1;
PARCEL 2, TRACT 2; & PARCEL 5, TRACT 2)
SEC. 24, T-4, R-13, UNION TWP, LOGAN COUNTY, OHIO.



DEPTH OF TOP SOIL

- A = 6' (ASSUMED)
- B = 2' "
- C = 2' "
- D = 2' MEAS.
- E = 2' "
- F = 2.5' "
- G = 2.5' "
- H = 3' "
- J = 7' "
- G₁ = 6.5' (ASSUMED)
- F₁ = 6.5' "
- E₁ = 6' "
- D₁ = 6' "

SURVEY FOR CLYDE ROPP
TO DETERMINE AMOUNT OF TOP SOIL REMOVED
FROM AREA-ABCHJ

NEEDS GRAVEL PIT
SEC. 24 T-4 R-13
UNION TOWNSHIP

OCT. 31, 1964

SCALE 1"=50'

INDEXED ON MAP
6084 2P

Don L. Dodson
Reg. Surveyor 4270
Bellefontaine, O.