

thence with the original line between sec 23 and 29 (S 1/4 W 1/4) 346 poles to the corner between sec 22, 23, 28 & 29 one of the original bearing trees standing a hickory 224 N 22 links the other a hickory is down - thence between sections 28 & 29 N 87 1/2 W 320 poles to the corner of sec 28 29 34 & 35 - the old corner trees are all destroyed here - thence between sec 29 & 35 N 10 E 346 poles to the beginning containing 678 acres - - The 1st division line begins at a stake in the north line, a bur oak N 38 E 18 links on an old N 87 1/2 W 24 links thence S 1/4 W 173 poles to a stake in a cornfield -

2nd The 2nd division line begins at the gr. sec. corner between sec 29 & 35 173 poles from either corner a hickory S 40 E 12 links, a hickory N 87 1/2 W 12 links - thence S 89 1/2 E 160 poles a hickory N 71 1/2 W 17 links a hickory S 53 E 29 links in the center of the section - Continued 100 poles further to the gr. sec. corner between 23 & 29 a red oak N 60 W 14 links a black walnut 65 E 21 links -

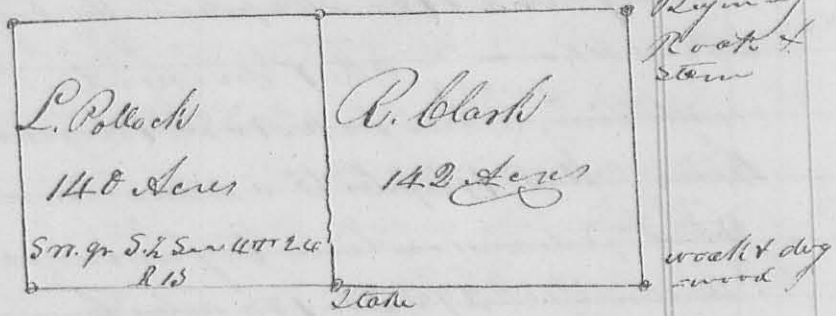
3rd The 3rd division line begins at the gr. sec. corner between sec. 28 & 29 100 poles from either corner a white oak N 23 1/2 W 8 links - thence N 10 E 173 poles to the center corner -

4th The 4th line begins in the line between sec 28 & 29 80 poles from the SE corner of the sec. a red oak N 75 W 18 links a red oak S 65 E 18 links - thence N 10 E 173 poles to a black oak N 30 W 7 links a hick S 35 E 12 links in the line through the center of the sec -

James Block }
George Shaw } Co. Jas. W. Morrison 65 1/2

ymos Sept 26 1832 Surveyor 1920
L. Pollock }
Robert Clark } (278) Surveyed and divided the South half of
sec. 22 & 23 R. 13. N. 1/2 for Layton Pollock & Robert
Clark as follows viz: Beginning at the
gr. sec. corner between sec 18 & 24 original bearing
tree yet standing a red oak N 20 E 150 links - thence
with the line between said sec. south 104 poles to
the corner of sec 17, 18, 23 & 24, original bearing trees
standing a red oak N 38 W 13 links, a dog wood N 85 E 26
links

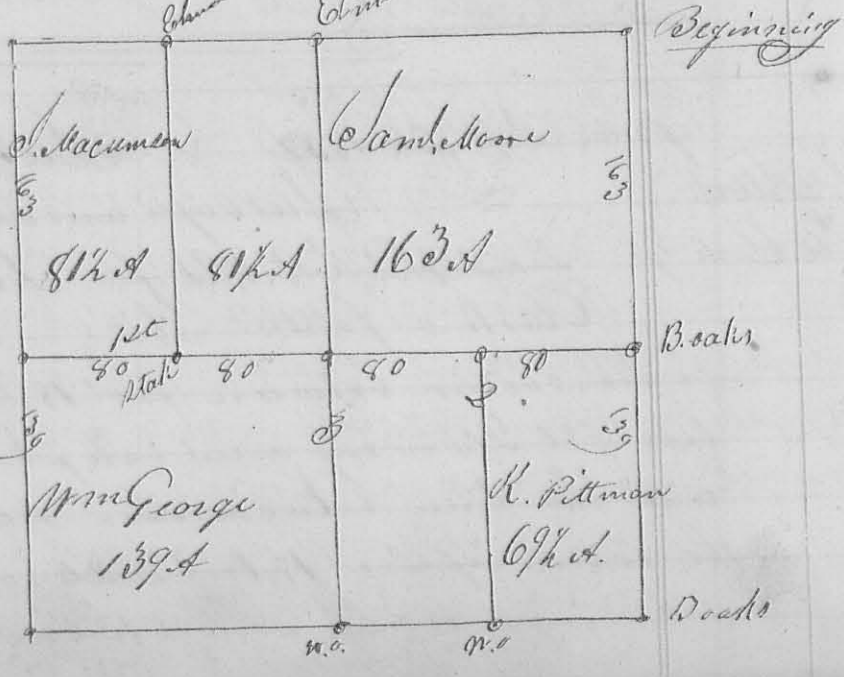
154 - thence between 23 & 24 $\text{S} 88\frac{1}{2}^{\circ} \text{W}$ 320 poles, crossing a Spring branch, to the corner of 23, 24, 29, 30 a black oak $\text{N} 11^{\circ} \text{E}$ 9 links a black oak $\text{N} 72^{\circ} \text{E}$ 21 links - thence $\text{N} 139$ poles to the gr. sec. corner between sec 24 & 30 a black oak $\text{N} 76^{\circ} \text{W}$ 12 links, a black oak north 23 links thence $\text{S} 89\frac{1}{2}^{\circ} \text{E}$ 320 poles, crossing the spring branch to the beginning con - taining 288 acres -



The division line begins at a stake in the south line of the sec. 160 poles from each corner & runs north 148 poles to a stake in the north line of the half sec. in the prairie - dividing the half sec. as above marked on the plat
 James Pollock }
 Robert Pittman } L.C. James Macammon & L.C.

1793
 Saml. Moore - 9th mo. 27, Sept. 1832
 Robt. Pittman }
 Jno Macammon }
 Wilson George }
 Survey No 193
 Surveyed Sec. 30. T. 4. R. 13. W. 1/2 For Samuel Moore, Robert Pittman, John Macammon & William George as follows - Beginning at a stake in a prairie the original of Secs 24 & 30 in T. 4. W. thence $\text{N} 88\frac{1}{2}^{\circ} \text{W}$ with the original line 320 poles to the corner of Secs 30 & 36 a stone in a prairie - thence 304 poles, passing the origin. - at gr. sec. corner between Secs 30 & 36 a bar oak $\text{S} 22^{\circ} \text{E}$

29 links, a hickory East 12 links at 163 poles) 304 poles to the corner of Secs 29, 30, 35 & 36 original bearing trees a hickory $\text{N} 76^{\circ} \text{E}$ 14 links, a white oak $\text{N} 72^{\circ} \text{W}$ 33 links - thence between 29 & 30 $\text{S} 89\frac{1}{2}^{\circ} \text{E}$ 320 poles passing the original



N^o 396

8278

Surveyed Nov. 14. 1837 for Layton Pollock the 277
 SW quarter of 526th R 18 m. & S. as follows. Beginning at
 the S.W. Corner of said Section a Wh. Oak 12th D. 376 262
 and a White Oak 12th D. N 53 W 40 1/2 Link, then North 38 ch 09
 Link, to a stem of Wh. Oak 12 inch dia. N 85 W 10 Link, and a
 Hickory 6th D. N 72 E 24 Link, then 587 E 40 chains to a stake
 in a prairie, then S 3/4 W 37 ch. 63 Link, to a stem in the
 Center of the South Line of the Section then with said Line
 N 89 W 39 ch. 50 Link, to the beginning containing 150 ⁴⁹/₁₀₀
 acres.

San Hopkins Co. S.W. L. Co.

N^o 397

8418

Surveyed Nov. 28. 1837 for George M. Colbeck, part of
 Military Survey N^o 3439 as follows. Beginning at a Hickory
 Beech of White Oak South easterly, comes to Robert Pawan
 Survey N 3682, then N 10 W 87 pole, to an Elm & Small Ash
 then N 80 E 134 pole, ending a Branch at 24 1/2 pole to a stem
 in a prairie. Wh. poplar & Red Oak. then S 4 W 46 pole
 to a Small poplar, then S 37 W 32 pole, to a Stake then S 3 W
 20 1/2 pole, ending a Branch at 2 pole to a Beech in the
 South line of said Survey, then with said Line S 80 W 93 1/2
 pole to the beginning. Containing 54 ⁴⁴/₁₀₀ acres.

G. M. Colbeck Jr. San Hopkins Co. S.W. L. Co.
 Lost Name. Bayle Downy ch & ac.

N^o 398

8378

Surveyed Dec. 13. 1837 for W. Chamberlin part of the SW
 q^r of 5372. R 14. m. & S. as follows. Beginning at the S. E
 Corner to Robert Morn 70 acs. (a part of said q^r) at a
 stem in a prairie, then with the south boundary of the
 Section S 89 1/2 E 18 ch 89 Link to a White Oak 12th D. N 79 W 34
 Link & Hickory 10th D. N 18 E 32, then North 40 chain
 25 Link to a White Oak 20th D. S 55 W 67 Link in the North
 Line of said quarter S. then with said Line N 89 1/2 W 18 ch
 89 Link to a Red Oak 8th D. N 77 E 16 Link, then Oak 12th D
 S 17 W 52 Link N. E. Corner to said Morn 70 acs. then with
 his East Line South 40 ch 25 Link to the beginning Cont. 76 acs.

San Hopkins Co. S. & E. Co.