

of the sec 80 poles from the N.W. corner then of  
 The 3<sup>rd</sup> line begins at the gr. sec. corner in the west  
 line of the sec. Thence S 9 1/2° E 340 poles (passing the centre  
 corner) to a small white oak in the centre of the east  
 line - The 4<sup>th</sup> line begins at a stone 80 poles west  
 of the last named corner; Thence N 1° E 172 poles to a stone  
 a hickory S 25° W 26 L. in the north line 80 poles west of  
 the N.E. corner of the sec. The number of acres and the  
 owners names are marked on each division of  
 the plat

Sam. Moore }  
 David Piatt } C.C.

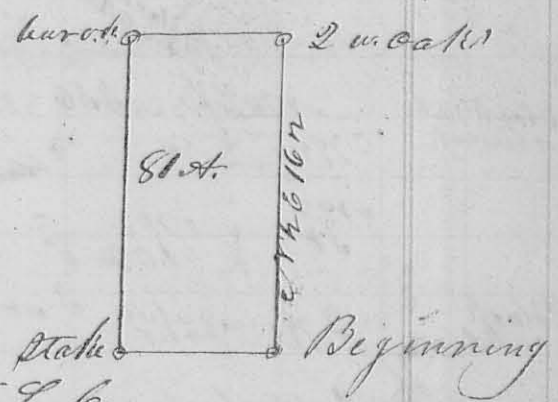
La Mettarron  
 Co, S, L, C.

Robert Clark 9<sup>th</sup> mo. (Sept. 29<sup>th</sup> 1832)

Survey # 195

Surveyed the east half of the N.E. qr of sec. 24 T4 R13  
 M. for Robert Clark. - beginning at the gr. sec. cor-  
 -ner between sec 18 & 24 a stone in a prairie from which  
 a red oak bears N 20° E 150 L. an original bearing tree  
 thence between sec 18 & 24 N 1/2° E 162 poles to the  
 N.E. corner of said sec. a white oak S 5° W 17 L  
 a white oak N 10 1/2° E 34 L - Thence N 89 1/2° W with  
 the original line 80 poles to a stone, a bar oak  
 S 70° E 68 L - Thence S 1/2° W

162 poles to a stake in a  
 prairie thence S 89 1/2° E  
 80 poles to the beginning,  
 containing 8 acres



Layton Pollock }  
 John Wren } C.C.

La Mettarron Co, S, L, C.

Luke Simon }  
 by J. W. Farmer }

10 mo. 8<sup>th</sup> 1832 Survey # 196

resurveyed and divided Jacob  
 Walker's survey of 1816 for Luke Simon  
 at the request of his atty John W. Farmer  
 Beginning at a white a dead black oak in Lad.  
 Cow's line N.W. corner of Thomas Worthington's survey