

107 South line - The 3rd line begins at 2 black oaks in Ludlow's line 102 poles from either corner thence or 70 & 79 poles to the 2 white oaks in the 1st division line -

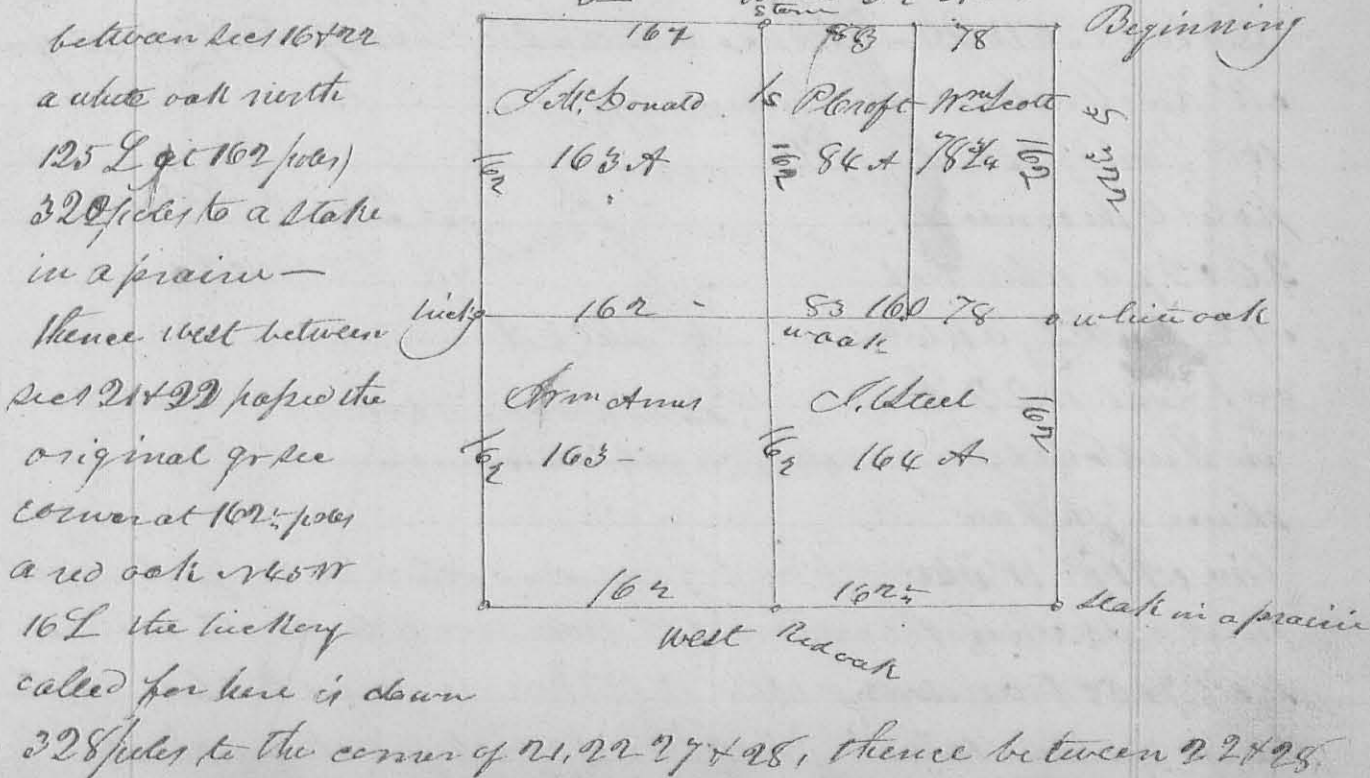
The 5th line begins at 2 black oaks in Finley's line 86 poles east of the 3 oaks at the end of the 1st line, thence S 19 1/2 E 172 poles to a white oak & 2 small hickories in the line of Northington's survey or 28 6 1/2 poles from the 2 black oaks and cherry tree corner to Northington

The 4th line begins at the white and black oak easterly corner to Finley, thence S 19 1/2 E 64 poles to the 3 black oaks in Northington's north line. The lots each bear the number of acres in each

Richd Shockey }
 Jeffrey Williams }
 Geo. Moot maker }
 J. M. Mearns
 G. S. L. Co.

10 mo. Oct. 10th 1832 Survey No 196 (8283)

P. Croft }
 Wm Scott }
 J. Steel }
 David Davis }
 Wm Arms }
 Samuel Brown }
 a.o. }
 Sec. corner }
 Surveyed and divided section 22 of T. R. 13 M. R. as follows for Philip Croft, Wm Arms, James Steel, David Davis, Wm Scott & John Mc Donald beginning at the corner of 1617, 22, & 24 a bur oak N 3 1/2 W 16 L, the other bearing tree is down thence south with the old line (traced the original 92



11° E 324 poles (passed the gr. sec. corner at 162 poles a hickory
 west 6 links) 324 to corner of sec 22, 23, 28, 29, original corner
 trees yet standing - thence between sec 22, 23, S 89 1/2° E passed
 a stone at 162 poles the gr. sec. corner) 322 poles to the beginning
 The 1st line, being at the stone in the center of the north of
 the sec. thence south 162 poles a white oak S 40° E 26 poles
 322 poles to the gr. sec. corner in the south line -

The 2nd division line begins at the gr. corner in the
 line of the sec, a hickory west 6 L. thence 89 1/2° E 162 poles,
 passed the center corner, 322 poles to the gr. sec. corner in the
 east line 3rd division line begins at 89 1/2° N 78 poles from
 the last named corner at a stake, thence north 162
 poles to a stake in the north line of the sec 78 poles from
 its E. corner

Henry Melhamon }
 David Platt }

La. Melhamon
 C. S. G. C.

(8284)

10th mo, Oct, 27 1832

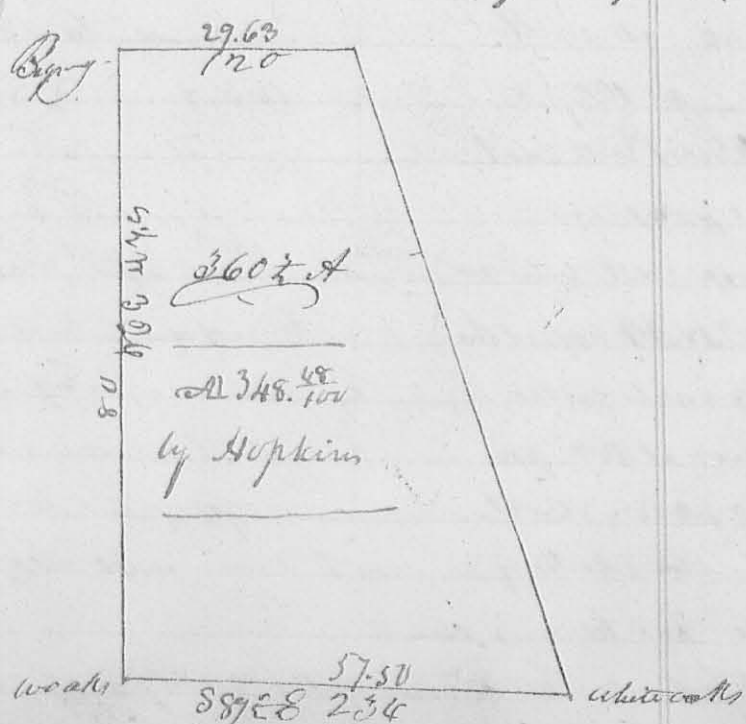
Surveyor No 197

Jo. Gordon 3

Surveyed fractional sec. 27, T4 N 14 E R14
 for James Gordon; Beginning at the corner of

sec 27, 28, 33 & 34, the original bearing trees are all down -
 thence between sec 27 & 33 S 71° N 326 poles to the origin-
 -al corner of sec 26, 27, 32 & 33, a "white oak 120 S 57° W
 20 L, a white oak 67 S 43° E all down marked a white
 oak 120 N 24 L thence between sec 26 & 27 S 89 1/2° E, crossed

at Key break at
 160 poles) 234
 poles to the corner of
 26 & 27 a white oak
 or 256 32 L a white
 oak (the N 22 L
 in Ludlow's line
 thence with said
 line or 195 11 346
 poles to the corner of
 sec 27 & 28 trees down
 thence between said



(white)

(white oak)