

Feb 1836

233

N^o 310

8263

Surveyed for Robert Edmiston a lot of ground adjoining the town of Cherokee as follows Beginning at the S.E. corner of Lot N^o 3 thence N 86° E 6 poles, thence N 46° 32 poles to a stake - thence S 78° W 16 2/10 poles to a stone, thence S 46° E 18 7/10 poles to a stake in the North Side of the North Alley of said town, thence thence N 86° E 10 poles to a stake parallel with the East line of Lot N^o 3 above said, thence S 46° E 11 poles to the beginning. Containing 2 Acres 41 hundredths.

Feb 5. 1836

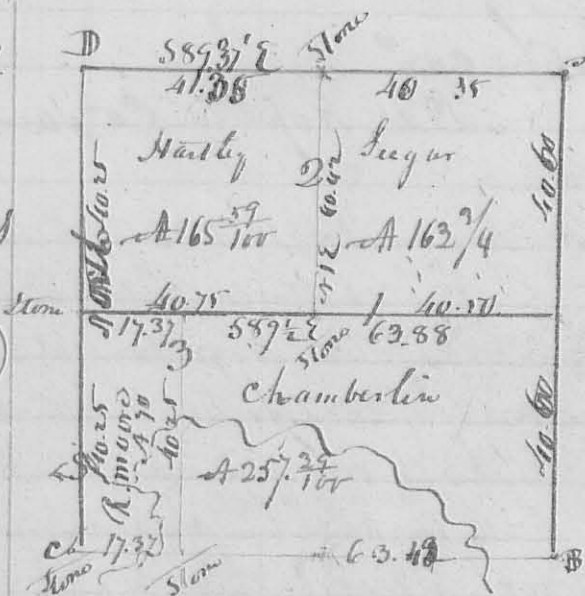
D. Hopkins County Surveyor &c

N^o 311

S1353

R14MRS

8370



Surveyed February 10th 1836 for Aaron Hartley and Chamberlin S12 S3 R14 MRS as follows

Beginning at the N.E. Corner of the section at a Stone the original corner tree gone thence N 79° W 81 ch 20 links to a Stone bearing trees yet standing thence N 89 1/4° W 80 ch 57 Links cupping branch at 30 poles a tall pine and

another small branch to a stone bearing trees yet standing - thence North 80 ch 57 Links cupping a branch at 31.32 & 36 poles to the N.W. corner of the lot thence S 87 3/4° E 81.75 ch to the beginning. Containing 657 7/10 acres. First Division line begins at a Stone in the West line of the section in a prairie 161 1/10 poles from either corner of the section a White Oak 22 S 1/2 S 1/4 E 134 Links - thence S 89 1/2° E 25 ch 25 links to East line of the section a Jack Oak 3 S 1/2 S 1/4 E 12 links Plum bush 2 S 1/2 N 56° W 5 Links. 162 7/10 poles from either corner of the section, the second line begins at the original gn. corner 165 4/10 poles Eastward from the N.W. corner of the section, a Stone, the original bearing trees in a decaying condition - thence S 1° W 40 ch 42 links to a Stone 163 poles from the center of the West line of the lot. - the 3rd line begins at a Bur. O. 8 S 1/2 N 77° E 16 links and Bur. O 12 S 1/2 S 1/4 E then South 40.25 to Stone in a prairie.

D. Chamberlin S. Seegar ch. com.

Dan Hopkins Co. Surveyor &c

INDEXED ON MAP
8370 1D

N^o 396

8278

Surveyed Nov. 14. 1837 for Layton Pollock the 277
 SW quarter of 526th R 18 m. & S. as follows. Beginning at
 the S.W. Corner of said Section a Wh. Oak 12th D. 376 262
 and a White Oak 12th D. N 53 W 40 1/2 Link, thence North 38 ch 09
 Link, to a stem of Wh. Oak 12 inch dia. N 85 W 10 Link, and a
 Hickory 6th D. N 72 E 24 Link, thence S 87 E 40 chains to a stake
 in a prairie, thence S 3/4 W 37 ch. 63 Link, to a stem in the
 Center of the South Line of the Section thence with said Line
 N 89 W 39 ch. 50 Link, to the beginning containing 150 ⁴⁹/₁₀₀
 acres.

San Hopkins Co. S.W. L. 6.0

N^o 397

8418

Surveyed Nov. 28. 1837 for George M. Colbeck, part of
 Military Survey N^o 3439 as follows. Beginning at a Hickory
 Beech of White Oak South easterly, comes to Robert Pawan
 Survey N 3682, thence N 10 W 87 1/2 pole, to an Elm & Small Ash
 thence N 80 E 134 pole, ending a Branch at 24 1/2 pole to a stem
 in a prairie. Wh. poplar & Red Oak. thence S 4 W 46 pole
 to a Small poplar, thence S 37 W 32 pole, to a Stake thence S 3 W
 20 1/2 pole, ending a Branch at 2 pole to a Beech in the
 South line of said Survey, thence with said Line S 80 W 93 1/2
 pole, to the beginning. Containing 54 ⁴⁴/₁₀₀ acres.

G. M. Colbeck Jr. San Hopkins Co. S.W. L. 6.0
 Good News. Bayly Denny ch & ac^o.

N^o 398

8378

Surveyed Dec. 13. 1837 for W. Chamberlin part of the SW
 Qr. of 537th R 14 m. & S. as follows. Beginning at the S. E
 Corner to Robert Morn 70 acres (a part of said Qr.) at a
 stem in a prairie, thence with the South boundary of the
 Section S 89 1/2 E 18 ch 89 Link to a White Oak 12th D. N 79 W 34
 Link & Hickory 10th D. N 18 E 32, thence North 40 chain
 25 Link to a White Oak 20th D. S 55 W 67 Link in the North
 Line of said quarter S. thence with said Line N 89 1/2 W 18 ch
 89 Link to a Red Oak 8th D. N 77 E 16 Link, 12th D. Oak 12th D.
 S 17 W 52 Link N. E. Comes to said Morn 70 acres. thence with
 his East Line South 40 ch 25 Link to the beginning Cont. 76 acres

San Hopkins Co. S. & E. O.

INDEXED ON
 MAP 8370 2D

No. 673 } June 20th 1849

185

8370

Surveyed for Thomas Moore Agent
of the estate of Judah Chamberlin
deceased a part of the South half
of Section No. 13 Town 3 Range 14
P. G. M. R. as follows Beginning at
a stone at the S. W. corner of the S. E.
qr. of said Section thence $N 72^{\circ} W 20 \frac{1}{2}$ poles
to a stone at the N. W. corner of a lot
in said section; thence $S 89 \frac{1}{2}^{\circ} E 121$ poles
to a stake in the North line of said
Massick's lot; thence $N 72^{\circ} W 144 \frac{3}{4}$ poles
to a stake in the centre line of said
section and in the South line of said
J. Secor's land; thence $N 87 \frac{1}{2}^{\circ} W 138$
poles to a stake at the N. E. corner of
a lot sold by said Chamberlin to
Leonard B. Sprague; thence $S 72^{\circ} E 164 \frac{3}{4}$
poles to a stake in the South line of
said section at Sprague's (now Mrs.
Cornell's) S. E. corner; thence $S 87 \frac{1}{2}^{\circ} E$
 $163 \frac{3}{4}$ poles to the place of Beginning con-
taining $126 \frac{1}{4}$ Acres—

Thomas Moore
John Moore & Co.

O. Huggins & Co.

INDEXED ON MAP
8370 3D