

Survey No. 628

8550

125

Surveyed May 26<sup>th</sup>  
1848 on the application of Solomon  
Proppis after his having given the nec-  
essary notice to all the parties interes-  
ted in said survey the East half of the  
N.W. qr. of Section 23. T4. Range 13 E. Great  
Miami R. to ascertain whether said  
half qr contained a surplus above  
Eighty seven acres and I find on sur-  
veying said half qr. as follows viz. Begin-  
ning at the centre stake of said Sect.  
W. Oak 18 S. E. S 42 1/2 E 12 links distant thence  
N 1/2 E 42.81 chains to a stone in a prairie  
thence N 89 1/2 W 20.19.91 chains to a stake  
in a field near a hickory stump  
thence S 1/2 W 43.50 chains to a stake  
and Blk. Oak 20 S. E. S 26 W 33 and  
Blk. Oak 24 S. E. S 25 1/2 E. 35 links dist-  
thence S 88 W 20 ch. to the beginning con-  
taining 86.30 <sup>100</sup> Acres. at 14 Poles from  
the N.W. corner of said 1/2 qr. on  
the west line put a stake in a field  
and on the East line at 14 1/2 poles  
from the N.E. corner placed an-  
other stake as the S.E. corner to Solo-  
mon Proppis lot.

R. R. Moore Esq

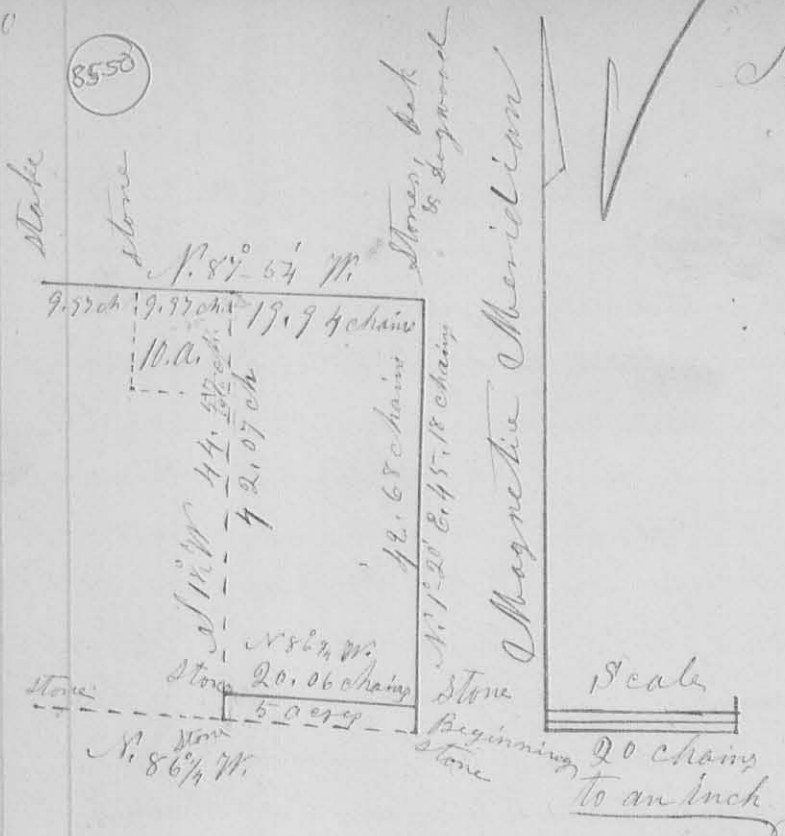
Geo. Cumins } ch. ers.

O. Hayes Sur. Genl.

8550

Survey No 784

Survey Nos. SKFP  
FROM 743 To 784  
HG  
3-21-91



Surveyor's Office Bellefontaine O.  
April 29<sup>th</sup> 1858

The above plat represents a survey of the East half of the N. East quarter of section No. 23 of Town No. 4, R. 13, E. G. & M. R. S., as surveyed by me, H. C. Moore, County Surveyor of Logan Co. Ohio, on the 3 day of April, A.D. 1858, at the request of Samuel Heading, for the purpose of establishing a line cutting five acres off the South end of the said  $\frac{1}{4}$  quarter, & the corner contiguous thereto, for re-witnessing the N.E. corner (being the N.E. corner of the said section No. 23.) And finding the North line of the said Quarter, & fixing a corner in the middle of the N. line of the West half of the said quarter, which I done in the following manner; to wit: Beginning at a stone, at the S.E. corner of the said Quarter, from which I found a large W. Oak bearing  $S. 45^{\circ} E.$  18 links; and a Red Oak stump  $N. 78^{\circ} W.$  13 links; Run thence  $N. 1^{\circ} 20' E. 45 \frac{18}{100}$  chains

at the N. E. corner of the section  
 to a stone, marked on the top, thus " + "  
 which had been covered by the grading  
 of the road, and which was said to have been  
 planted by Oden Obayer while County Surveyor  
 of this County, & since recognized by Jas. B.  
 McLaughlin while he was Co. Surveyor of this  
 County, and while the original witness trees  
 (W. Oak & Logwood) were living & green, from  
 which I found the stump of a small W. Oak  
 bearing N. 38° W. (nearly)  $\frac{1}{3}$  link, said to be the  
 original witness; & the place shown me by Mariner  
 Kinnan & Christian Hoffman as being where  
 a large Logwood formerly stood, bore N. 82° E.  
 27 link; I then planted a flat lime-stone  
 by the East side of the stone I found here,  
 & marked a Logwood  $\frac{1}{2}$  link. Thus " X " at 62 W.  
 53 link, & a W. Oak 22 link. Thus " X " S. 70° W. 66  
 link; Done in the presence of Philip  
 Heading, Samuel Heading, Mariner  
 Kinnan, Christian Hoffman, David  
 Plank, Samuel Plank, George F. Dun,  
 James Dun, & Ephraim Miller;

Thence Run N. 87° - 57' W. 39.88 chains to a  
 Stake N. W. corner to the Quarter, & N. E.  
 corner to the N. W. quarter of the same section,  
 planting a stone in a prairie at 29.91 chains  
 for Samuel Heading's N. W. corner to a  
 ten-acre lot off the North end of the East  
 half of the West half of the said N. E. quarter  
 of Sect 23. I then commenced again at the  
 Beginning corner, and run with the E. line of  
 the section N. 1° 20' E. 2.482 chains where  
 I planted a stone as Samuel Heading's S.  
 E. corner, & the N. E. corner to the five acre  
 lot sold of the South end of said E. half  
 quarter, & marked a W. Oak " X " 30 link.

N. 73° E 18 links, distant 4. Thence N. 86 1/4 W,  
parallel with the south line of the quarter,  
20.06 chains to a point in the line between  
the E. & West halves of the said N.E. quarter  
& 2.47 1/2 chains from the south line of the  
said quarter, where I planted a long  
slender stone at Samuel Heading's S.W.  
corner, & the N.W. corner to the aforesaid  
5 acre lot; — — — — —

Done in the presence of Samuel  
Plank, David Plank, Jacob Kennagy,  
Philip Heading & Samuel Heading, —

From this measurement I also  
calculated the length & bearing of the line  
between the East & West halves of said N.E.  
quarter to be S. 1 1/2 W. 44.57 chains, and  
the area of the East half to be 89.71/100 acres,  
and Samuel Heading's part thereof to be 84.71/100  
acres.

David Plank }  
Philip Heading } Chainmen (affirmed)

I hereby certify the foregoing plat  
and report to be correct — — —  
H. C. Moore Cor. Surveyor  
of Logan Co. Ohio