

Received 2-9-00 OK/jcl

# Lee Surveying and Mapping Co., Inc.

Land Surveys • Topography • Subdivisions • Construction Layout

117 N. Madriver St.  
Bellefontaine OH 43311



Phone: (937) 593-7335  
Fax: (937) 593-7444

## WILLIAMSON 24.195 ACRES TRACT A

Lying in Section 19, Town 3, Range 14, Union Township, Logan County, Ohio.

Being out of the Eloise E. Williamson and Ellen A. Taylor original 154.0 acre tract as deeded and described in Official Record 137, Page 18 of the Logan County Records of Deeds and being more particularly described as follows:

Beginning at a resurvey monument found on the northeast corner of Section 19 at the intersection of the center-lines of County Highway 43 and Township Road 201.

THENCE, with the north line of Section 19 and the center-line of County Highway 43 (60 feet wide), S 90°-00'-00" W, a distance of 2336.68 feet to a MAG nail set at the TRUE POINT OF BEGINNING.

THENCE, S 0°-08'-49" W, a distance of 1660.00 feet to a 5/8 inch iron rod set, passing a 5/8 inch iron rod set at 30.00 feet.

THENCE, S 34°-33'-23" E, a distance of 1211.95 feet to a 5/8 inch iron rod set.

THENCE, with the north line of the Clyde L. Roby, Trustee original 133.00 acre tract, (O.R. 182, Pg. 853, Tract V), and the south line of the northeast quarter of Section 19, N 88°-59'-31" W, a distance of 960.10 feet to an 18 inch concrete post found.

THENCE, with the east line of the Antoinette Musser original 80.7 acre tract, (Vol. 402, Pg. 397), N 0°-08'-49" E, a distance of 2641.24 feet to a resurvey monument found, passing a 5/8 inch iron rod set at 2611.24 feet.

THENCE, with the north line of Section 19 and the center-line of County Highway 43, N 90°-00'-00" E, a distance of 270.00 feet to the point of beginning.

Containing 24.195 acres of which 0.186 acre is within the highway right-of-way.

The basis for bearings is the north line of Section 19 being N 90°-00'-00" E, and all other bearings are from angles and distances measured in a field survey by Lee Surveying and Mapping Co., Inc. on January 28, 2000.

Description prepared by:

Jeffrey I. Lee  
Professional Surveyor 6359  
January 31, 2000



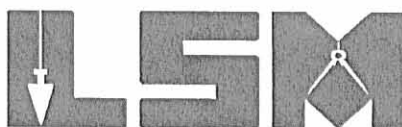
ORIGINAL STAMP IN GREEN L-2868

01305 1D-1

# Lee Surveying and Mapping Co., Inc.

Land Surveys • Topography • Subdivisions • Construction Layout

117 N. Madriver St.  
Bellefontaine OH 43311



Phone: (937) 593-7335  
Fax: (937) 593-7444

## WILLIAMSON 24.180 ACRES TRACT B

Lying in Section 19, Town 3, Range 14, Union Township, Logan County, Ohio.

Being out of the Eloise E. Williamson and Ellen A. Taylor original 154.0 acre tract as deeded and described in Official Record 137, Page 18 of the Logan County Records of Deeds and being more particularly described as follows:

Beginning at a resurvey monument found on the northeast corner of Section 19 at the intersection of the center-lines of County Highway 43 and Township Road 201.

THENCE, with the north line of Section 19 and the center-line of County Highway 43 (60 feet wide), S 90°-00'-00" W, a distance of 2186.68 feet to a MAG nail set at the TRUE POINT OF BEGINNING.

THENCE, S 0°-08'-49" W, a distance of 808.28 feet to a 5/8 inch iron rod set, passing a 5/8 inch iron rod set at 30.00 feet.

THENCE, N 90°-00'-00" E, a distance of 540.00 feet to a 5/8 inch iron rod set.

THENCE, S 0°-08'-49" W, a distance of 1849.85 to a 5/8 inch iron rod set on the south line of the northeast quarter of Section 19 and being on the north line of the Clyde L. Roby, Trustee original 133.00 acre tract (O.R. Vol. 182, Pg. 853, Tract V).

THENCE, N 34°-33'-23" W, a distance of 1211.95 feet to a 5/8 inch iron rod set.

THENCE, N 0°-08'-49" E, a distance of 1660.00 feet to a MAG nail set, passing a 5/8 inch iron rod set at 1630.00 feet.

THENCE, with the north line of Section 19 and the center-line of County Highway 43, N 90°-00'-00" E, a distance of 150.00 feet to the point of beginning.

Containing 24.180 acres of which 0.103 acre is within the highway right-of-way.

The basis for bearings is the north line of Section 19 being N 90°-00'-00" E, and all other bearings are from angles and distances measured in a field survey by Lee Surveying and Mapping Co., Inc. on January 28, 2000.

Description prepared by:

A handwritten signature in black ink, appearing to read 'Jeffrey I. Lee', is written over the typed name and title.

Jeffrey I. Lee  
Professional Surveyor 6359  
January 31, 2000



9305 1D-2

# Lee Surveying and Mapping Co., Inc.

Land Surveys • Topography • Subdivisions • Construction Layout

117 N. Madriver St.  
Bellefontaine OH 43311



Phone: (937) 593-7335  
Fax: (937) 593-7444

## WILLIAMSON 5.010 ACRES TRACT C

Lying in Section 19, Town 3, Range 14, Union Township, Logan County, Ohio.

Being out of the Eloise E. Williamson and Ellen A. Taylor original 154.0 acre tract as deeded and described in Official Record 137, Page 18 of the Logan County Records of Deeds and being more particularly described as follows:

Beginning at a resurvey monument found on the northeast corner of Section 19 at the intersection of the center-lines of County Highway 43 and Township Road 201.

THENCE, with the north line of Section 19 and the center-line of County Highway 43 (60 feet wide), S 90°-00'-00" W, a distance of 1916.68 feet to a MAG nail set at the TRUE POINT OF BEGINNING.

THENCE, S 0°-08'-49" W, a distance of 808.28 feet to a 5/8 inch iron rod set, passing a 5/8 inch iron rod set at 30.00 feet.

THENCE, S 90°-00'-00" W, a distance of 270.00 feet to a 5/8 inch iron rod set.

THENCE, N 0°-08'-49" E, a distance of 808.28 feet to a MAG nail set, passing a 5/8 inch iron rod set at 778.28 feet.

THENCE, with the north line of Section 19 and the center-line of County Highway 43, N 90°-00'-00" E, a distance of 270.00 feet to the point of beginning.

Containing 5.010 acres of which 0.186 acre is within the highway right-of-way.

The basis for bearings is the north line of Section 19 being N 90°-00'-00" E, and all other bearings are from angles and distances measured in a field survey by Lee Surveying and Mapping Co., Inc. on January 28, 2000.

Description prepared by:

A handwritten signature in black ink, appearing to read 'Jeffrey I. Lee', is written over the typed name.

Jeffrey I. Lee  
Professional Surveyor 6359  
January 31, 2000



ORIGINAL STAMPL-2868EN

9305 1D-3

# Lee Surveying and Mapping Co., Inc.

Land Surveys • Topography • Subdivisions • Construction Layout

117 N. Madriver St.  
Bellefontaine OH 43311



Phone: (937) 593-7335  
Fax: (937) 593-7444

## WILLIAMSON 5.010 ACRES TRACT D

Lying in Section 19, Town 3, Range 14, Union Township, Logan County, Ohio.

Being out of the Eloise E. Williamson and Ellen A. Taylor original 154.0 acre tract as deeded and described in Official Record 137, Page 18 of the Logan County Records of Deeds and being more particularly described as follows:

Beginning at a resurvey monument found on the northeast corner of Section 19 at the intersection of the center-lines of County Highway 43 and Township Road 201.

THENCE, with the north line of Section 19 and the center-line of County Highway 43 (60 feet wide), S 90°-00'-00" W, a distance of 1646.68 feet to a MAG nail set at the TRUE POINT OF BEGINNING.

THENCE, S 0°-08'-49" W, a distance of 808.28 feet to a 5/8 inch iron rod set, passing a 5/8 inch iron rod set at 30.00 feet.

THENCE, S 90°-00'-00" W, a distance of 270.00 feet to a 5/8 inch iron rod set.

THENCE, N 0°-08'-49" E, a distance of 808.28 feet to a MAG nail set, passing a 5/8 inch iron rod set at 778.28 feet.

THENCE, with the north line of Section 19 and the center-line of County Highway 43, N 90°-00'-00" E, a distance of 270.00 feet to the point of beginning.

Containing 5.010 acres of which 0.186 acre is within the highway right-of-way.

The basis for bearings is the north line of Section 19 being N 90°-00'-00" E, and all other bearings are from angles and distances measured in a field survey by Lee Surveying and Mapping Co., Inc. on January 28, 2000.

Description prepared by:

A handwritten signature in black ink, appearing to read 'Jeffrey I. Lee', is written over the typed name and title.

Jeffrey I. Lee  
Professional Surveyor 6359  
January 31, 2000



ORIGINAL STAMP L-2868 EEN

9305 10-4

# Lee Surveying and Mapping Co., Inc.

Land Surveys • Topography • Subdivisions • Construction Layout

117 N. Madriver St.  
Bellefontaine OH 43311



Phone: (937) 593-7335  
Fax: (937) 593-7444

## WILLIAMSON 5.010 ACRES TRACT E

Lying in Section 19, Town 3, Range 14, Union Township, Logan County, Ohio.

Being out of the Eloise E. Williamson and Ellen A. Taylor original 154.0 acre tract as deeded and described in Official Record 137, Page 18 of the Logan County Records of Deeds and being more particularly described as follows:

Beginning at a resurvey monument found on the northeast corner of Section 19 at the intersection of the center-lines of County Highway 43 and Township Road 201.

THENCE, with the north line of Section 19 and the center-line of County Highway 43 (60 feet wide), S 90°-00'-00" W, a distance of 1376.68 feet to a MAG nail set at the TRUE POINT OF BEGINNING.

THENCE, S 0°-08'-49" W, a distance of 808.28 feet to a 5/8 inch iron rod set, passing a 5/8 inch iron rod set at 30.00 feet.

THENCE, S 90°-00'-00" W, a distance of 270.00 feet to a 5/8 inch iron rod set.

THENCE, N 0°-08'-49" E, a distance of 808.28 feet to a MAG nail set, passing a 5/8 inch iron rod set at 778.28 feet.

THENCE, with the north line of Section 19 and the center-line of County Highway 43, N 90°-00'-00" E, a distance of 270.00 feet to the point of beginning.

Containing 5.010 acres of which 0.186 acre is within the highway right-of-way.

The basis for bearings is the north line of Section 19 being N 90°-00'-00" E, and all other bearings are from angles and distances measured in a field survey by Lee Surveying and Mapping Co., Inc. on January 28, 2000.

Description prepared by:

A handwritten signature in black ink, appearing to read 'Jeffrey I. Lee'.

Jeffrey I. Lee  
Professional Surveyor 6359  
January 31, 2000



ORIGINAL STAMP-2868REEN

9305 10-5

# Lee Surveying and Mapping Co., Inc.

Land Surveys • Topography • Subdivisions • Construction Layout

117 N. Madriver St.  
Bellefontaine OH 43311



Phone: (937) 593-7335  
Fax: (937) 593-7444

## WILLIAMSON 20.656 ACRES TRACT F

Lying in Section 19, Town 3, Range 14, Union Township, Logan County, Ohio.

Being out of the Eloise E. Williamson and Ellen A. Taylor original 154.0 acre tract as deeded and described in Official Record 137, Page 18 of the Logan County Records of Deeds and being more particularly described as follows:

Beginning at a resurvey monument found on the northeast corner of Section 19 at the intersection of the center-lines of County Highway 43 and Township Road 201.

THENCE, with the north line of Section 19 and the center-line of County Highway 43 (60 feet wide), S 90°-00'-00" W, a distance of 1226.68 feet to a MAG nail set at the TRUE POINT OF BEGINNING.

THENCE, S 0°-08'-49" W, a distance of 2665.52 feet to a 5/8 inch iron rod set, passing a 5/8 inch iron rod set at 30.00 feet.

THENCE, with the north lines of the Clyde L. Roby, Trustee original 81.64 acre and 133.00 acre tracts, (O.R. 182, Pg. 853, Tracts I and V), and the south line of the northeast quarter of Section 19, N 88°-59'-31" W, a distance of 420.05 feet to a 5/8 inch iron set.

THENCE, N 0°-08'-49" E, a distance of 1849.85 feet to a 5/8 inch iron rod set.

THENCE, N 90°-00'-00" E, a distance of 270.00 feet to a 5/8 inch iron rod set.

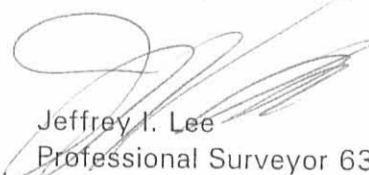
THENCE, N 0°-08'-49" E, a distance of 808.28 feet to a MAG nail set, passing a 5/8 inch iron rod set at 778.28 feet.

THENCE, with the north line of Section 19 and the center-line of County Highway 43, N 90°-00'-00" E, a distance of 150.00 feet to the point of beginning.

Containing 20.656 acres of which 0.103 acre is within the highway right-of-way.

The basis for bearings is the north line of Section 19 being N 90°-00'-00" E, and all other bearings are from angles and distances measured in a field survey by Lee Surveying and Mapping Co., Inc. on January 28, 2000.

Description prepared by:

  
Jeffrey I. Lee  
Professional Surveyor 6359  
January 31, 2000  
Revised February 4, 2000



ORIGINAL STAMP IN GREEN  
L-2868

9305 1D-4



# Lee Surveying and Mapping Co., Inc.

Land Surveys • Topography • Subdivisions • Construction Layout

117 N. Madriver St.  
Bellefontaine OH 43311



Phone: (937) 593-7335  
Fax: (937) 593-7444

## WILLIAMSON 59.015 ACRES TRACT G

Lying in Section 19, Town 3, Range 14, Union Township, Logan County, Ohio.

Being out of the Eloise E. Williamson and Ellen A. Taylor original 154.0 acre tract as deeded and described in Official Record 137, Page 18 of the Logan County Records of Deeds and being more particularly described as follows:

Beginning at a resurvey monument found on the northeast corner of Section 19 at the intersection of the center-lines of County Highway 43 and Township Road 201.

THENCE, with the north line of Section 19 and the center-line of County Highway 43 (60 feet wide), S 90°-00'-00" W, a distance of 896.68 feet to a MAG nail set at the TRUE POINT OF BEGINNING.

THENCE, S 0°-08'-49" W, a distance of 808.28 feet to a 5/8 inch iron rod set, passing a 5/8 inch iron rod set at 30.00 feet.

THENCE, N 90°-00'-00" E, a distance of 899.76 feet to a 5/8 inch iron rod set.

THENCE, with the east line of Section 19 and the west lines of the Eloise E. Williamson 50.50 acre tract (O.R. 137, Pg. 18) and the Frederick L. Hagar's 80.00 acre tract (D.B. Vol. 334, Pg. 523), S 0°-04'-16" E, a distance of 1878.99 feet to an 18 inch concrete post found.

THENCE, with the north lines of the Clyde L. Roby, Trustee original 81.64 acre tract, (O.R. 182, Pg. 853, Tract I), and the south line of the northeast quarter of Section 19, N 88°-59'-31" W, a distance of 1237.05 feet to a 5/8 inch iron set.

THENCE, N 0°-08'-49" E, a distance of 2665.52 feet to a MAG nail set, passing a 5/8 inch iron rod set at 2635.52 feet.

THENCE, with the north line of Section 19 and the center-line of County Highway 43, N 90°-00'-00" E, a distance of 330.00 feet to the point of beginning.

Containing 59.015 acres of which 0.227 acre is within the highway right-of-way.

The basis for bearings is the north line of Section 19 being N 90°-00'-00" E, and all other bearings are from angles and distances measured in a field survey by Lee Surveying and Mapping Co., Inc. on January 28, 2000.

Description prepared by:

A handwritten signature in black ink, appearing to read 'Jeffrey I. Lee', is written over a circular stamp.

Jeffrey I. Lee  
Professional Surveyor 6359  
January 31, 2000



ORIGINAL ST L:2868GREEN

9305 1D-7

# Lee Surveying and Mapping Co., Inc.

Land Surveys • Topography • Subdivisions • Construction Layout

117 N. Madriver St.  
Bellefontaine OH 43311



Phone: (937) 593-7335  
Fax: (937) 593-7444

## WILLIAMSON 5.010 ACRES TRACT H

Lying in Section 19, Town 3, Range 14, Union Township, Logan County, Ohio.

Being out of the Eloise E. Williamson and Ellen A. Taylor original 154.0 acre tract as deeded and described in Official Record 137, Page 18 of the Logan County Records of Deeds and being more particularly described as follows:

Beginning at a resurvey monument found on the northeast corner of Section 19 at the intersection of the center-lines of County Highway 43 and Township Road 201.

THENCE, with the north line of Section 19 and the center-line of County Highway 43 (60 feet wide), S 90°-00'-00" W, a distance of 626.68 feet to a MAG nail set at the TRUE POINT OF BEGINNING.

THENCE, S 0°-08'-49" W, a distance of 808.28 feet to a 5/8 inch iron rod set, passing a 5/8 inch iron rod set at 30.00 feet.

THENCE, S 90°-00'-00" W, a distance of 270.00 feet to a 5/8 inch iron rod set.

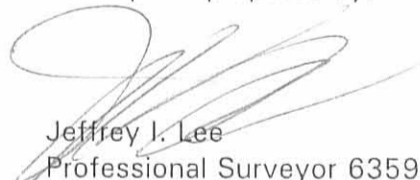
THENCE, N 0°-08'-49" E, a distance of 808.28 feet to a MAG nail set, passing a 5/8 inch iron rod set at 778.28 feet.

THENCE, with the north line of Section 19 and the center-line of County Highway 43, N 90°-00'-00" E, a distance of 270.00 feet to the point of beginning.

Containing 5.010 acres of which 0.186 acre is within the highway right-of-way.

The basis for bearings is the north line of Section 19 being N 90°-00'-00" E, and all other bearings are from angles and distances measured in a field survey by Lee Surveying and Mapping Co., Inc. on January 28, 2000.

Description prepared by:

  
Jeffrey J. Lee  
Professional Surveyor 6359  
January 31, 2000



ORIGINAL STAMP GREEN L-2868

9305 1D 8



# Lee Surveying and Mapping Co., Inc.

Land Surveys • Topography • Subdivisions • Construction Layout

117 N. Madriver St.  
Bellefontaine OH 43311



Phone: (937) 593-7335  
Fax: (937) 593-7444

## WILLIAMSON 5.010 ACRES TRACT J

Lying in Section 19, Town 3, Range 14, Union Township, Logan County, Ohio.

Being out of the Eloise E. Williamson and Ellen A. Taylor original 154.0 acre tract as deeded and described in Official Record 137, Page 18 of the Logan County Records of Deeds and being more particularly described as follows:

Beginning at a resurvey monument found on the northeast corner of Section 19 at the intersection of the center-lines of County Highway 43 and Township Road 201.

THENCE, with the north line of Section 19 and the center-line of County Highway 43 (60 feet wide), S 90°-00'-00" W, a distance of 356.68 feet to a MAG nail set at the TRUE POINT OF BEGINNING.

THENCE, S 0°-08'-49" W, a distance of 808.28 feet to a 5/8 inch iron rod set, passing a 5/8 inch iron rod set at 30.00 feet.

THENCE, S 90°-00'-00" W, a distance of 270.00 feet to a 5/8 inch iron rod set.


THENCE, N 0°-08'-49" E, a distance of 808.28 feet to a MAG nail set, passing a 5/8 inch iron rod set at 778.28 feet.

THENCE, with the north line of Section 19 and the center-line of County Highway 43, N 90°-00'-00" E, a distance of 270.00 feet to the point of beginning.

Containing 5.010 acres of which 0.186 acre is within the highway right-of-way.

The basis for bearings is the north line of Section 19 being N 90°-00'-00" E, and all other bearings are from angles and distances measured in a field survey by Lee Surveying and Mapping Co., Inc. on January 28, 2000.

Description prepared by:

  
Jeffrey I. Lee  
Professional Surveyor 6359  
January 31, 2000

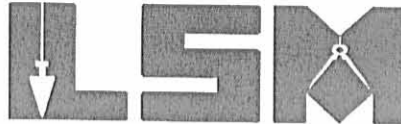


9305 10-9

# Lee Surveying and Mapping Co., Inc.

Land Surveys • Topography • Subdivisions • Construction Layout

117 N. Madriver St.  
Bellefontaine OH 43311



Phone: (937) 593-7335  
Fax: (937) 593-7444

## WILLIAMSON 5.010 ACRES TRACT K

Lying in Section 19, Town 3, Range 14, Union Township, Logan County, Ohio.

Being out of the Eloise E. Williamson and Ellen A. Taylor original 154.0 acre tract as deeded and described in Official Record 137, Page 18 of the Logan County Records of Deeds and being more particularly described as follows:

Beginning at a resurvey monument found on the northeast corner of Section 19 at the intersection of the center-lines of County Highway 43 and Township Road 201.

THENCE, with the north line of Section 19 and the center-line of County Highway 43 (60 feet wide), S 90°-00'-00" W, a distance of 86.68 feet to a MAG nail set at the TRUE POINT OF BEGINNING.

THENCE, S 0°-08'-49" W, a distance of 808.28 feet to a 5/8 inch iron rod set, passing a 5/8 inch iron rod set at 30.00 feet.

THENCE, S 90°-00'-00" W, a distance of 270.00 feet to a 5/8 inch iron rod set.

THENCE, N 0°-08'-49" E, a distance of 808.28 feet to a MAG nail set, passing a 5/8 inch iron rod set at 778.28 feet.

THENCE, with the north line of Section 19 and the center-line of County Highway 43, N 90°-00'-00" E, a distance of 270.00 feet to the point of beginning.

Containing 5.010 acres of which 0.186 acre is within the highway right-of-way.

The basis for bearings is the north line of Section 19 being N 90°-00'-00" E, and all other bearings are from angles and distances measured in a field survey by Lee Surveying and Mapping Co., Inc. on January 28, 2000.

Description prepared by:

Jeffrey I. Lee  
Professional Surveyor 6359  
January 31, 2000



9305 ID-10

# Lee Surveying and Mapping Co., Inc.

Land Surveys • Topography • Subdivisions • Construction Layout

117 N. Madriver St.  
Bellefontaine OH 43311



Phone: (937) 593-7335  
Fax: (937) 593-7444

## WILLIAMSON 5.010 ACRES TRACT L

Lying in Sections 13 and 19, Town 3, Range 14, Union Township, Logan County, Ohio.

Being out of the Eloise E. Williamson and Ellen A. Taylor original 154.0 acre tract and 50.5 acre tract as deeded and described in Official Record 137, Page 18 of the Logan County Records of Deeds and being more particularly described as follows:

Beginning at a resurvey monument found on the northeast corner of Section 19 at the intersection of the center-lines of County Highway 43 and Township Road 201.

THENCE, with the north line of Section 13 and the center-line of County Highway 43 (60 feet wide), N  $89^{\circ}-55'-32''$  E, a distance of 183.32 feet to a MAG nail set.

THENCE, S  $0^{\circ}-08'-49''$  W, a distance of 808.29 feet to a 5/8 inch iron rod set, passing a 5/8 inch iron rod set at 30.00 feet.

THENCE, S  $89^{\circ}-55'-32''$  W, a distance of 180.24 feet to a 5/8 inch iron rod set on the east line of Section 19.

THENCE, S  $90^{\circ}-00'-00''$  W, a distance of 89.76 feet to a 5/8 inch iron rod set.

THENCE, N  $0^{\circ}-08'-49''$  E, a distance of 808.28 feet to a MAG nail set, passing a 5/8 inch iron rod set at 778.28 feet.

THENCE, with the north line of Section 19 and the center-line of County Highway 43, N  $90^{\circ}-00'-00''$  E, a distance of 86.68 feet to the point of beginning.

Containing 5.010 acres of which 1.637 acres are in Section 19, 3.373 acres are in Section 13 and 0.186 acre is within the highway right-of-way.

The basis for bearings is the north line of Section 19 being N  $90^{\circ}-00'-00''$  E, and all other bearings are from angles and distances measured in a field survey by Lee Surveying and Mapping Co., Inc. on January 28, 2000.

Description prepared by:

A handwritten signature in black ink, appearing to read 'Jeffrey I. Lee', written over a circular stamp area.

Jeffrey I. Lee  
Professional Surveyor 6359  
January 31, 2000



ORIGINAL STAMP IN GREEN L-2868

9305 10-11

# Lee Surveying and Mapping Co., Inc.

Land Surveys • Topography • Subdivisions • Construction Layout

117 N. Madriver St.  
Bellefontaine OH 43311



Phone: (937) 593-7335  
Fax: (937) 593-7444

## WILLIAMSON 6.494 ACRES TRACT M

Lying in Section 13, Town 3, Range 14, Union Township, Logan County, Ohio.

Being out of the Eloise E. Williamson and Ellen A. Taylor original 50.5 acre tract as deeded and described in Official Record 137, Page 18 of the Logan County Records of Deeds and being more particularly described as follows:

Beginning at a resurvey monument found on the northeast corner of Section 19 at the intersection of the center-lines of County Highway 43 and Township Road 201.

THENCE, with the north line of Section 13 and the center-line of County Highway 43 (60 feet wide), N 89°-55'-32" E, a distance of 183.32 feet to a MAG nail set at the TRUE POINT OF BEGINNING.

THENCE, with the north line of Section 13 and the center-line of County Highway 43, N 89°-55'-32" E, a distance of 350.00 feet to a MAG nail set.

THENCE, S 0°-08'-49" W, a distance of 808.29 feet to a 5/8 inch iron rod set, passing a 5/8 inch iron rod set at 30.00 feet.

THENCE, S 89°-55'-32" W, a distance of 350.00 feet to a 5/8 inch iron rod set.

THENCE, N 0°-08'-49" E, a distance of 808.29 feet to the point of beginning, passing a 5/8 inch iron rod set at 778.29 feet.

Containing 6.494 acres of which 0.241 acre is within the highway right-of-way.

The basis for bearings is the north line of Section 19 being N 90°-00'-00" E, and all other bearings are from angles and distances measured in a field survey by Lee Surveying and Mapping Co., Inc. on January 28, 2000.

Description prepared by:

Jeffrey I. Lee  
Professional Surveyor 6359  
January 31, 2000



9305 10-12



# Lee Surveying and Mapping Co., Inc.

Land Surveys • Topography • Subdivisions • Construction Layout

117 N. Madriver St.  
Bellefontaine OH 43311



Phone: (937) 593-7335  
Fax: (937) 593-7444

## WILLIAMSON 5.009 ACRES TRACT P

Lying in Section 13, Town 3, Range 14, Union Township, Logan County, Ohio.

Being out of the Eloise E. Williamson and Ellen A. Taylor original 50.5 acre tract as deeded and described in Official Record 137, Page 18 of the Logan County Records of Deeds and being more particularly described as follows:

Beginning at a resurvey monument found on the northeast corner of Section 19 at the intersection of the center-lines of County Highway 43 and Township Road 201.

THENCE, with the north line of Section 13 and the center-line of County Highway 43 (60 feet wide), N  $89^{\circ}-55'-32''$  E, a distance of 803.32 feet to a MAG nail set at the TRUE POINT OF BEGINNING.

THENCE, with the north line of Section 13 and the center-line of County Highway 43, N  $89^{\circ}-55'-32''$  E, a distance of 824.28 feet to a MAG nail set at the intersection of the center-lines of County Highway 43 and Township Road 201.

THENCE, with the center-line of Township Road 201, S  $2^{\circ}-11'-09''$  W, a distance of 266.46 feet to a MAG nail set.

THENCE, S  $89^{\circ}-55'-32''$  W, a distance of 814.80 feet to a 5/8 inch iron rod set, passing a 5/8 inch iron rod set at 30.16 feet.

THENCE, N  $0^{\circ}-08'-49''$  E, a distance of 266.25 feet to the point of beginning, passing a 5/8 inch iron rod set at 236.25 feet.

Containing 5.009 acres of which 0.731 acre is within the highway right-of-way.

The basis for bearings is the north line of Section 19 being N  $90^{\circ}-00'-00''$  E, and all other bearings are from angles and distances measured in a field survey by Lee Surveying and Mapping Co., Inc. on January 28, 2000.

Description prepared by:

A handwritten signature in black ink, appearing to read 'Jeffrey I. Lee', is written over a circular embossed stamp.

Jeffrey I. Lee  
Professional Surveyor 6359  
January 31, 2000



ORIGINAL STAMP IN GREEN

L-2868

930510-14



# Lee Surveying and Mapping Co., Inc.

Land Surveys • Topography • Subdivisions • Construction Layout

117 N. Madriver St.  
Bellefontaine OH 43311



Phone: (937) 593-7335  
Fax: (937) 593-7444

## WILLIAMSON 5.009 ACRES TRACT Q

Lying in Section 13, Town 3, Range 14, Union Township, Logan County, Ohio.

Being out of the Eloise E. Williamson and Ellen A. Taylor original 50.5 acre tract as deeded and described in Official Record 137, Page 18 of the Logan County Records of Deeds and being more particularly described as follows:

Beginning at a MAG nail set on the north line of Section 13 at the intersection of the center-lines of County Highway 43 and southbound Township Road 201.

THENCE, with the center-line of Township Road 201 (60 feet wide), S 2°-11'-09" W, a distance of 266.46 feet to a MAG nail set at the TRUE POINT OF BEGINNING.

THENCE, with the center-line of Township Road 201, S 2°-11'-09" W, a distance of 269.60 feet to a MAG nail set.

THENCE, S 89°-55'-32" W, a distance of 805.21 feet to a 5/8 inch iron rod set, passing a 5/8 inch iron rod set at 30.16 feet.

THENCE, N 0°-08'-49" E, a distance of 269.39 feet to a 5/8 inch iron rod set.

THENCE, N 89°-55'-32" E, a distance of 814.80 feet to the point of beginning, passing a 5/8 inch iron rod set at 784.64 feet.

Containing 5.009 acres of which 0.186 acre is within the highway right-of-way.

The basis for bearings is the north line of Section 19 being N 90°-00'-00" E, and all other bearings are from angles and distances measured in a field survey by Lee Surveying and Mapping Co., Inc. on January 28, 2000.

Description prepared by:

A handwritten signature in black ink, appearing to read 'Jeffrey I. Lee', is written over a light grey background.

Jeffrey I. Lee  
Professional Surveyor 6359  
January 31, 2000

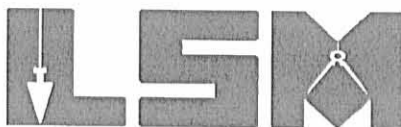


93051D-15

# Lee Surveying and Mapping Co., Inc.

Land Surveys • Topography • Subdivisions • Construction Layout

117 N. Madriver St.  
Bellefontaine OH 43311



Phone: (937) 593-7335  
Fax: (937) 593-7444

## WILLIAMSON 5.009 ACRES TRACT R

Lying in Section 13, Town 3, Range 14, Union Township, Logan County, Ohio.

Being out of the Eloise E. Williamson and Ellen A. Taylor original 50.5 acre tract as deeded and described in Official Record 137, Page 18 of the Logan County Records of Deeds and being more particularly described as follows:

Beginning at a MAG nail set on the north line of Section 13 at the intersection of the center-lines of County Highway 43 and southbound Township Road 201.

THENCE, with the center-line of Township Road 201 (60 feet wide), S 2°-11'-09" W, a distance of 536.06 feet to a MAG nail set at the TRUE POINT OF BEGINNING.

THENCE, with the center-line of Township Road 201, S 2°-11'-09" W, a distance of 272.85 feet to a MAG nail set.

THENCE, S 89°-55'-32" W, a distance of 795.51 feet to a 5/8 inch iron rod set, passing a 5/8 inch iron rod set at 30.16 feet.

THENCE, N 0°-08'-49" E, a distance of 272.64 feet to a 5/8 inch iron rod set.

THENCE, N 89°-55'-32" E, a distance of 805.21 feet to the point of beginning, passing a 5/8 inch iron rod set at 775.05 feet.

Containing 5.009 acres of which 0.188 acre is within the highway right-of-way.

The basis for bearings is the north line of Section 19 being N 90°-00'-00" E, and all other bearings are from angles and distances measured in a field survey by Lee Surveying and Mapping Co., Inc. on January 28, 2000.

Description prepared by:

A handwritten signature in black ink, appearing to read 'Jeffrey I. Lee'.

Jeffrey I. Lee  
Professional Surveyor 6359  
January 31, 2000



ORIGINAL STAMP L-2868

9305 1D-16

# Lee Surveying and Mapping Co., Inc.

Land Surveys • Topography • Subdivisions • Construction Layout

117 N. Madriver St.  
Bellefontaine OH 43311



Phone: (937) 593-7335  
Fax: (937) 593-7444

## WILLIAMSON 10.131 ACRES TRACT S

Lying in Section 13, Town 3, Range 14, Union Township, Logan County, Ohio.

Being out of the Eloise E. Williamson and Ellen A. Taylor original 50.5 acre tract as deeded and described in Official Record 137, Page 18 of the Logan County Records of Deeds and being more particularly described as follows:

Beginning at a MAG nail set on the north line of Section 13 at the intersection of the center-lines of County Highway 43 and southbound Township Road 201.

THENCE, with the center-line of Township Road 201 (60 feet wide), S 2°-11'-09" W, a distance of 808.91 feet to a MAG nail set at the TRUE POINT OF BEGINNING.

THENCE, with the center-line of Township Road 201, S 2°-11'-09" W, a distance of 277.71 feet to a MAG nail set.

THENCE, S 89°-55'-32" W, a distance of 1584.81 feet to a 5/8 inch iron rod set, passing a 5/8 inch iron rod set at 30.02 feet.

THENCE, with the west line of Section 13 and the east line of the Eloise E. Williamson 154.00 acre tract (O.R. 137, Pg. 18), N 0°-04'-16" W, a distance of 277.50 feet to a 5/8 inch iron rod set.

THENCE, N 89°-55'-32" E, a distance of 1595.74 feet to the point of beginning, passing a 5/8 inch iron rod set at 1565.58 feet.

Containing 10.131 acres of which 0.191 acre is within the highway right-of-way.

The basis for bearings is the north line of Section 19 being N 90°-00'-00" E, and all other bearings are from angles and distances measured in a field survey by Lee Surveying and Mapping Co., Inc. on January 28, 2000.

Description prepared by:

A handwritten signature in black ink, appearing to read 'Jeffrey I. Lee', is written over the typed name.

Jeffrey I. Lee  
Professional Surveyor 6359  
January 31, 2000



ORIGINAL STAMPL-2868:EN

9305 1D-17

# Lee Surveying and Mapping Co., Inc.

Land Surveys • Topography • Subdivisions • Construction Layout

117 N. Madriver St.  
Bellefontaine OH 43311



Phone: (937) 593-7335  
Fax: (937) 593-7444

## WILLIAMSON 10.131 ACRES TRACT T

Lying in Section 13, Town 3, Range 14, Union Township, Logan County, Ohio.

Being out of the Eloise E. Williamson and Ellen A. Taylor original 50.5 acre tract as deeded and described in Official Record 137, Page 18 of the Logan County Records of Deeds and being more particularly described as follows:

Beginning at a MAG nail set on the north line of Section 13 at the intersection of the center-lines of County Highway 43 and southbound Township Road 201.

THENCE, with the center-line of Township Road 201 (60 feet wide), S 2°-11'-09" W, a distance of 1086.62 feet to a MAG nail set at the TRUE POINT OF BEGINNING.

THENCE, with the center-line of Township Road 201, S 2°-11'-09" W, a distance of 308.54 feet to a 5/8 inch iron rod set.

THENCE, with the north line of the Fredrick L. Hager original 80.0 acre tract, (Vol. 334, Pg. 523), N 87°-58'-15" W, a distance of 1573.71 feet to a 5/8 inch iron rod set, passing a 5/8 inch iron rod set at 30.02 feet.

THENCE, with the west line of Section 13 and the east line of the Eloise E. Williamson 154.00 acre tract (O.R. 137, Pg. 18), N 0°-04'-16" W, a distance of 250.54 feet to a 5/8 inch iron rod set.

THENCE, N 89°-55'-32" E, a distance of 1584.81 feet to the point of beginning, passing a 5/8 inch iron rod set at 1554.65 feet.

Containing 10.131 acres of which 0.212 acre is within the highway right-of-way.

The basis for bearings is the north line of Section 19 being N 90°-00'-00" E, and all other bearings are from angles and distances measured in a field survey by Lee Surveying and Mapping Co., Inc. on January 28, 2000.

Description prepared by:

A handwritten signature in black ink, appearing to read 'Jeffrey I. Lee', is written over a circular stamp.

Jeffrey I. Lee  
Professional Surveyor 6359  
January 31, 2000



9305 1D-18

# Lee Surveying and Mapping Co., Inc.

Land Surveys • Topography • Subdivisions • Construction Layout

117 N. Madriver St.  
Bellefontaine OH 43311



Phone: (937) 593-7335  
Fax: (937) 593-7444

## WILLIAMSON 16.514 ACRES TRACT KLM

Lying in Sections 13 and 19, Town 3, Range 14, Union Township, Logan County, Ohio.

Being out of the Eloise E. Williamson and Ellen A. Taylor original 154.0 and 50.5 acre tracts as deeded and described in Official Record 137, Page 18 of the Logan County Records of Deeds and being more particularly described as follows:

Beginning at a resurvey monument found on the northwest corner of Section 13 at the intersection of the center-lines of County Highway 43 and northbound Township Road 201.

THENCE, with the center-line of County Highway 43 (60 feet wide), N 89°-55'-32" E, a distance of 533.32 feet to a MAG nail set.

THENCE, S 00°-08'-49" W, a distance of 808.29 feet to a 5/8 inch iron rod set, passing a 5/8 inch iron rod set at 30.00 feet.

THENCE, S 89°-55'-32" W, a distance of 530.24 feet to a 5/8 inch iron rod set on the west line of Section 13.

THENCE, S 90°-00'-00" W, a distance of 359.76 feet to a 5/8 inch iron rod set.

THENCE, N 00°-08'-49" E, a distance of 808.28 feet to a MAG nail set, passing a 5/8 inch iron rod set at 778.28 feet.

THENCE, with the center-line of County Highway 43 and the north line of Section 19, N 90°-00'-00" E, a distance of 356.68 feet to the point of beginning.

Containing 16.514 acres of which 0.613 acre is within the highway right-of-way, 9.867 acres are in Section 13 and 6.647 acres are in Section 19.

The basis for bearings is the north line of Section 19 being N 90°-00'-00" E, and all other bearings are from angles and distances measured in a field survey by Lee Surveying and Mapping Co., Inc. on January 28, 2000.

Description prepared by:

Jeffrey I. Lee  
Professional Surveyor 6359  
March 6, 2000

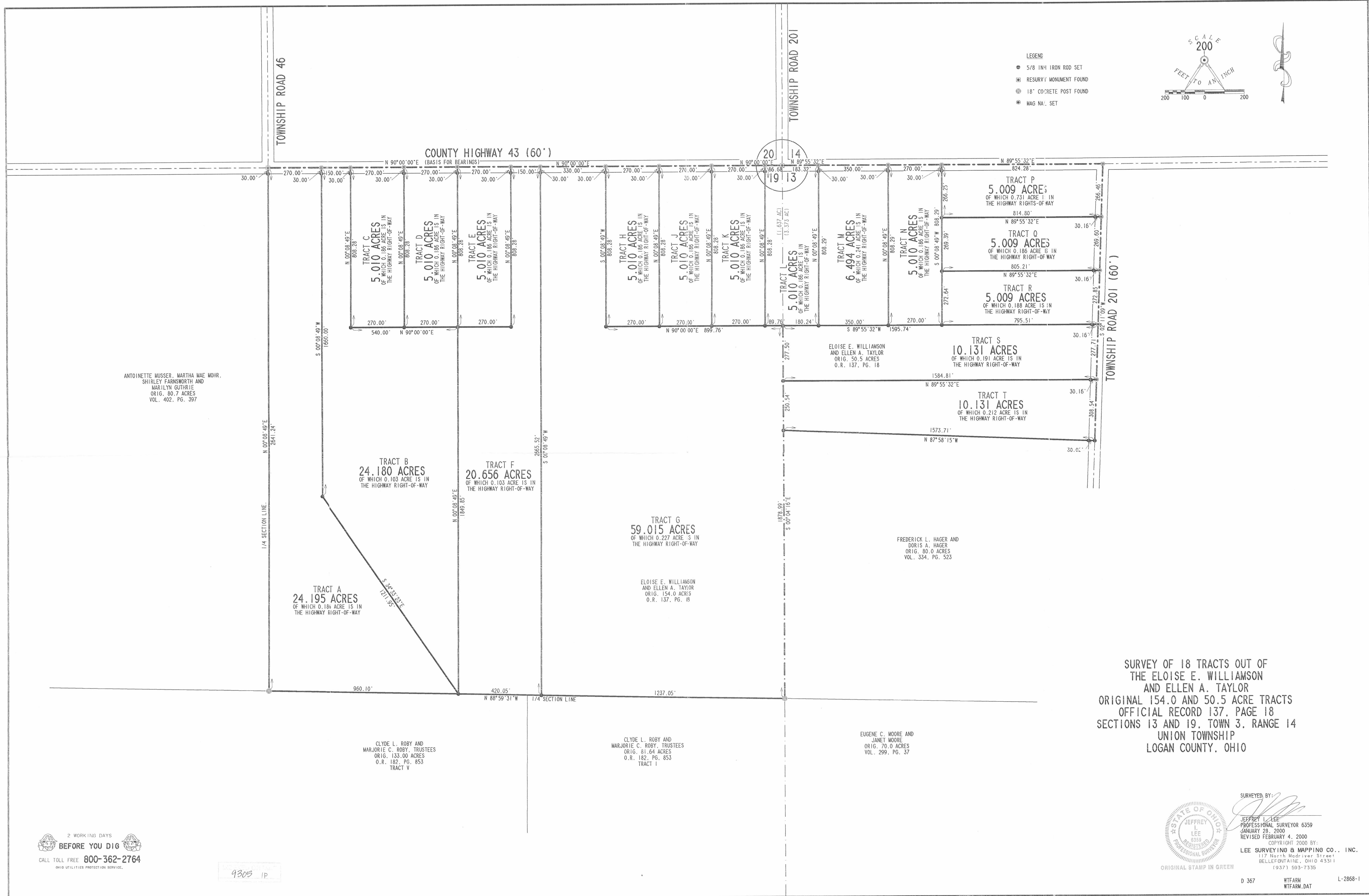


ORIGINAL STAMP IN GREEN

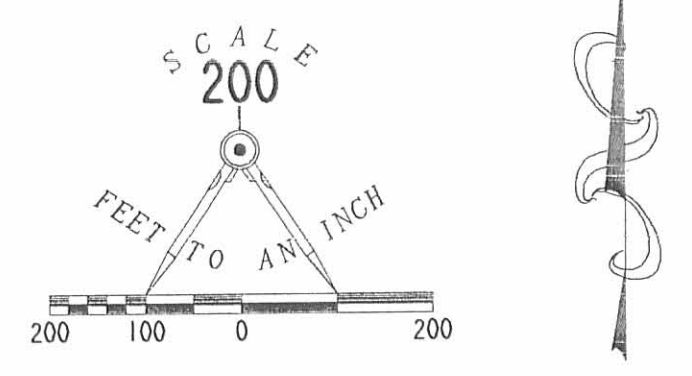
L-2868

9305 1D-19





- LEGEND
- 5/8 INH IRON ROD SET
  - ⊠ RESURVEY MONUMENT FOUND
  - ⊙ 18" CONCRETE POST FOUND
  - ⊗ MAG NAL SET



ANTOINETTE MUSSER, MARTHA MAE MOHR,  
SHIRLEY FARNSWORTH AND  
MARILYN GUTHRIE  
ORIG. 80.7 ACRES  
VOL. 402, PG. 397

TRACT A  
24.195 ACRES  
OF WHICH 0.18 ACRES IS IN  
THE HIGHWAY RIGHT-OF-WAY

TRACT B  
24.180 ACRES  
OF WHICH 0.103 ACRES IS IN  
THE HIGHWAY RIGHT-OF-WAY

TRACT F  
20.656 ACRES  
OF WHICH 0.103 ACRES IS IN  
THE HIGHWAY RIGHT-OF-WAY

TRACT G  
59.015 ACRES  
OF WHICH 0.227 ACRES IS IN  
THE HIGHWAY RIGHT-OF-WAY

ELOISE E. WILLIAMSON  
AND ELLEN A. TAYLOR  
ORIG. 154.0 ACRES  
O.R. 137, PG. 18

CLYDE L. ROBY AND  
MARJORIE C. ROBY, TRUSTEES  
ORIG. 81.64 ACRES  
O.R. 182, PG. 853  
TRACT V

FREDERICK L. HAGER AND  
DORIS A. HAGER  
ORIG. 80.0 ACRES  
VOL. 334, PG. 523

EUGENE C. MOORE AND  
JANET MOORE  
ORIG. 70.0 ACRES  
VOL. 299, PG. 37

SURVEY OF 18 TRACTS OUT OF  
THE ELOISE E. WILLIAMSON  
AND ELLEN A. TAYLOR  
ORIGINAL 154.0 AND 50.5 ACRE TRACTS  
OFFICIAL RECORD 137, PAGE 18  
SECTIONS 13 AND 19, TOWN 3, RANGE 14  
UNION TOWNSHIP  
LOGAN COUNTY, OHIO

2 WORKING DAYS  
BEFORE YOU DIG  
CALL TOLL FREE 800-362-2764  
OHIO UTILITIES PROTECTION SERVICE

9305 1P

SURVEYED BY: *Jeffrey L. Lee*  
JEFFREY L. LEE  
PROFESSIONAL SURVEYOR 6359  
JANUARY 28, 2000  
REVISED FEBRUARY 4, 2000  
COPYRIGHT 2000 BY:  
LEE SURVEYING & MAPPING CO., INC.  
117 North Madison Street  
BELLEFONTAINE, OHIO 43311  
(937) 593-7336

ORIGINAL STAMP IN GREEN

D 367 WIFARM WIFARM.DAT L-2868-1