

REC'D 9-17-02 SMM/ALC

Lee Surveying and Mapping Co., Inc.

Land Surveys • Topography • Subdivisions • Construction Layout

117 N. Madriver St.
Bellefontaine OH 43311



Phone: (937) 593-7335
Fax: (937) 593-7444

COOPER 34.986 ACRES

Lying in Section 6, Town 4, Range 13, Union Township, Logan County, Ohio.

Being out of the Donald L. Cooper and Barbara A. Wilson original 89.840 acre tract as deeded and described in Official Record 140, Page 667, Tract I of the Logan County Records of Deeds and being more particularly described as follows:

Beginning at a stone found in a monument box on the south line of Section 6 at the intersection of the center-lines of Township Road 30 and Township Road 187.

THENCE, with the center-line of Township Road 187 (60 feet wide), N 5°-30'-00" E, a distance of 1410.07 feet to a railroad spike set at the TRUE POINT OF BEGINNING.

THENCE, with the center-line of Township Road 187, N 5°-30'-00" E, a distance of 781.79 feet to a railroad spike set.

THENCE, with the south lines of the William D. Watkins 8.732 acre tract (Vol. 404, Pg. 225) and 0.933 acre tract (O.R. 122, Pg. 174) and the south line of the Wanda R. Schlumbohm, Trustee, original 66.815 acre tract (O.R. 250, Pg. 112, Tracts VII and VIII), S 85°-16'-56" E, a distance of 1812.09 feet to 12 inch concrete post found, passing a 5/8 inch iron rod set at 30.00 feet.

THENCE, with the east line of Union Township and the west line of the Wanda R. Schlumbohm, Trustee, 11.27 acre tract (O.R. 250, Pg. 112, Tract V), and the Nancy Sue Loffer original 114.69 acre tract (O.R. 369, Pg. 520), S 6°-08'-45" W, a distance of 1028.80 feet to a 5/8 inch iron rod set.

THENCE, N 63°-25'-33" W, a distance of 507.35 feet to a 5/8 inch iron rod set.

THENCE, N 82°-46'-59" W, a distance of 1327.50 feet to the point of beginning, passing a 5/8 inch iron rod set at 1297.49 feet.

Containing 34.986 acres, of which 0.449 acre is within the highway right-of-way.

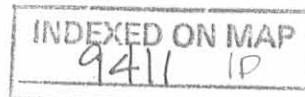
The basis for bearings is the center-line of Township Road 187, being N 5°-30'-00" E, and all other bearings are from angles and distances measured in a field survey by Lee Surveying and Mapping Co., Inc. on September 5, 2002.



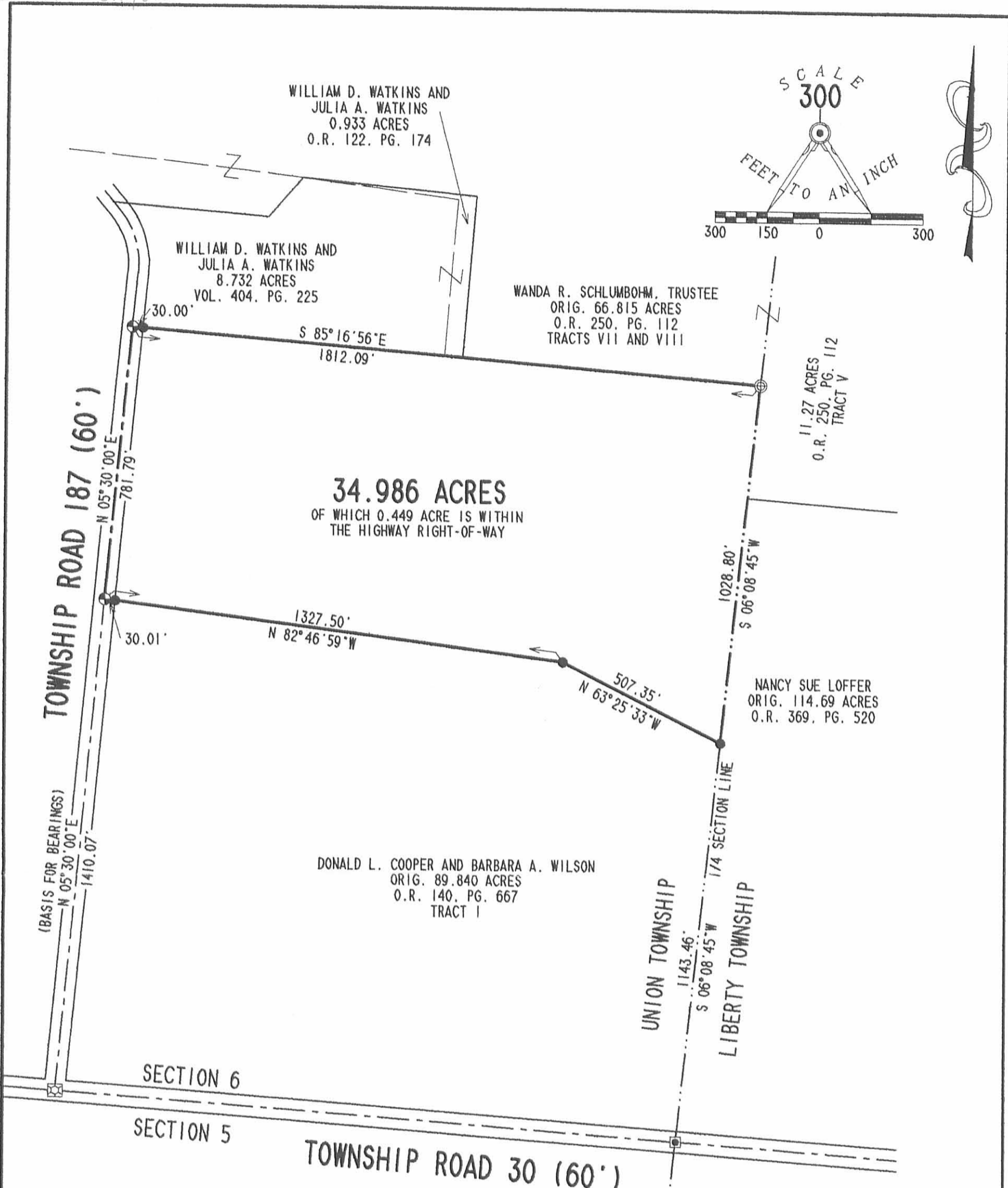
ORIGINAL STAMP IN GREEN

Description prepared by:

Jeffrey I. Lee
Jeffrey I. Lee
Professional Surveyor 6359
September 11, 2002



L-3427



SURVEY OF 34.986 ACRES OUT OF THE DONALD L. COOPER AND BARBARA A. WILSON ORIGINAL 89.840 ACRE TRACT OFFICIAL RECORD 140, PAGE 667, TRACT 1 SECTION 6, TOWN 4, RANGE 13 UNION TOWNSHIP LOGAN COUNTY, OHIO

- LEGEND**
- 5/8 INCH IRON ROD SET
 - ⊕ RAILROAD SPIKE SET
 - ⊠ STONE FOUND IN A MONUMENT BOX
 - ⊞ CONCRETE MONUMENT FOUND IN A MONUMENT BOX
 - ⊙ 12" CONCRETE POST FOUND



SURVEYED BY:
[Signature]
JEFFREY I. LEE
PROFESSIONAL SURVEYOR 6359
SEPTEMBER 5, 2002

COPYRIGHT 2002 BY:
LEE SURVEYING & MAPPING CO., INC.
117 North Madriver Street
BELLEFONTAINE, OHIO 43311
(937) 593-7335

2 WORKING DAYS
BEFORE YOU DIG
CALL TOLL FREE **800-362-2764**
OHIO UTILITIES PROTECTION SERVICE.

INDEXED ON MAP
9411 1P