

Lee Surveying and Mapping Co., Inc.

Land Surveys • Topography • Subdivisions • Construction Layout

117 N. Madriver St.
Bellefontaine OH 43311



Phone: (937) 593-7335
Fax: (937) 593-7444

MRM INVESTMENTS 324.614 ACRES

Lying in Virginia Military Survey 3138, Virginia Military Survey 4957, Virginia Military Survey 4948, 9423, 9876, and Virginia Military Survey 4195, 4604, Jefferson and Monroe Townships, Village of Valley Hi, Logan County, Ohio.

Being all of the MRM Investment Inc. original 268.183 acre tract as deeded and described in Official Record 146, Page 628, Parcel I, and the 8.362 acre tract, the 1.163 acre tract and the 43.998 acre tract as deeded and described in Official Record 136, Page 373 of the Logan County Records of Deeds and being more particularly described as follows:

Beginning at a 5/8 inch iron rod found on the center-line of County Highway 291 (Marmon Road) at the intersection with the east line of Virginia Military Survey 3138 on the Village of Valley Hi Corporation Line.

THENCE, with the center-line of County Highway 291 (60 feet wide), and the Village of Valley Hi Corporation Line, N 68°-01'-12" E a distance of 783.37 feet to a 3/4 iron rod found.

THENCE, continuing with the center-line of County Highway 291 and the Village of Valley Hi Corporation Line, N 63°-16'-41" E, a distance of 60.20 feet to a MAG nail set.

THENCE, S 14°-30'-08" W, a distance of 39.89 feet to a 5/8 inch iron rod found.

THENCE, with the south right-of-way of County Highway 291, N 61°-16'-29" E, a distance of 308.44 feet to a 5/8 inch iron rod found.

THENCE, with the Village of Valley Hi Corporation Line and the west line of the Alexander Andreoff 0.973 acre tract, (O.R. 233, Pg. 682, Tract I), 1.249 acre tract, (O.R. 284, Pg. 704) and 6.939 acre tract, (O.R. 167, Pg. 604, Parcel I), S 14°-38'-02" W, a distance of 985.44 feet to a 1 inch iron pipe found.

THENCE, with the Village of Valley Hi Corporation Line and the south line of the said 6.939 acre tract, N 77°-03'-52" E, a distance of 700.29 feet to a 5/8 inch iron rod found.

THENCE, with the Village of Valley Hi Corporation Line and the west lines of the Rose Marie Bonetzky 20.33 acre tract, (Vol. 393, Pg. 887), the R. Michael Reichert 5.71 acre tract, (O.R. 208, Pg. 714, Tract III) and the Krista L. Harmon 9.995 acre tract, (O.R. 89, Pg. 750), S 14°-04'-34" W, a distance of 1977.93 feet to a 1-1/2 inch iron pipe found.

THENCE, with the Village of Valley Hi Corporation Line and the north line of the Randy A. Lockwood original 40.468 acre tract, (O.R. 395, Pg. 266), S 75°-33'-36" W, a distance of 1330.03 feet to a 5/8 inch iron rod found on the east line of Virginia Military Survey 3138.

THENCE, with the north line of Mountain Top Campground (Plat Cabinet A, Slide 591), S 73°-39'-06" W, a distance of 1525.79 feet to a 5/8 inch iron rod found.

THENCE, with the north lines of Alpine Village Subdivision No. 2, (Plat Cabinet A, Slide 515), the following four (4) courses:

N 81°-17'-29" W, a distance of 347.70 feet to a 5/8 inch iron rod set.

A curve to the right having a central angle of 11°-56'-53", a radius of 425.74 feet, an arc length of 88.78 feet, and a chord bearing N 75°-25'-44" W, a distance of 88.62 feet to a 1/2 inch iron pipe found.

N 20°-39'-58" E, a distance of 119.35 feet to a 1/2 inch iron pipe found.

N 44°-04'-30" W, a distance of 142.39 feet to a 5/8 inch iron rod set.

THENCE, with the lines of the Michael B. Shepherd 6' strip, (Vol. 333, Pg. 868), the following three (3) courses:

INDEXED ON MAP
5762 1D-1

Lee Surveying and Mapping Co., Inc.

Land Surveys • Topography • Subdivisions • Construction Layout

117 N. Madriver St.
Bellefontaine OH 43311



Phone: (937) 593-7335
Fax: (937) 593-7444

N 45°-55'-30" E, a distance of 6.00 feet to a 5/8 inch iron rod set.

N 44°-04'-30" W, a distance of 119.97 feet to a 5/8 inch iron rod set.

S 35°-36'-37" W, a distance of 6.10 feet to a 1/2 inch iron pipe found.

THENCE, with the lines of said Alpine Village Subdivision No. 2, the following three courses:

N 54°-33'-05" W, a distance of 194.00 feet to a 5/8 inch iron rod set.

S 35°-36'-37" W, a distance of 289.58 feet to a 1/2 inch iron pipe found.

N 69°-17'-40" W, a distance of 50.99 feet to a 5/8 inch iron rod set.

THENCE, with the lines of Alpine Village Subdivision No. 1, (Plat Cabinet A, Slide 415), the following three (3) courses:

N 20°-45'-00" E, a distance of 125.52 feet to a 1/2 inch iron pipe found.

N 11°-45'-39" E, a distance of 419.97 feet to a 5/8 inch iron rod set.

N 4°-46'-00" W, a distance of 491.17 feet to a 1 inch iron pipe found.

THENCE, with the lines of the Madriver Valley Ski Club, Inc. 0.412 acre tract, (Vol. 327, Pg. 805), the following three (3) courses:

N 43°-37'-28" E, a distance of 106.78 feet to a 5/8 inch iron rod found.

N 4°-53'-56" W, a distance of 183.76 feet to a 5/8 inch iron rod found.

N 81°-15'-20" W, a distance of 74.24 feet to a 5/8 inch iron rod set.

THENCE, with the lines of the said Alpine Village Subdivision No. 1, the following two (2) courses:

A curve to the left having a central angle of 70°-52'-53", a radius of 225.00 feet, an arc length of 278.35 feet and a chord bearing N 27°-19'-02" W, a distance of 260.94 feet to a 5/8 inch iron rod set.

A curve to the right having a central angle of 90°-00'-00", a radius of 25.00 feet, an arc length of 39.27 feet and a chord bearing N 20°-52'-28" W, a distance of 35.36 feet to a 5/8 inch iron rod set.

THENCE, with the southerly right-of-way of County Highway 291 and the lines of Alpine Village Subdivision No. 1, the following three (3) courses:

S 22°-48'-10" W, a distance of 219.77 feet to a 5/8 inch iron rod set.

A curve to the right having a central angle of 48°-06'-30", a radius of 508.34 feet, an arc length of 426.82 feet and a chord bearing S 47°-00'-15" W, a distance of 414.40 feet to a 5/8 inch iron rod set.

S 71°-11'-24" W, a distance of 352.84 feet to a 5/8 inch iron rod set.

THENCE, with the lines of the Alpine Village Subdivision No. 1, the following three (3) courses:

S 19°-02'-25" E, a distance of 357.24 feet to a 1 inch iron pipe found.

S 53°-50'-30" W, a distance of 426.75 feet to a 5/8 inch iron rod set.

S 14°-18'-29" W, a distance of 289.85 feet to a 1 inch iron pipe found.

THENCE, with the lines of the Aldredge Brothers, Ltd, 10.801 acre tract, (O.R. 415, Pg. 117), the following two (2) courses:

Lee Surveying and Mapping Co., Inc.

Land Surveys • Topography • Subdivisions • Construction Layout

117 N. Madriver St.
Bellefontaine OH 43311



Phone: (937) 593-7335
Fax: (937) 593-7444

S 42°-11'-26" W, a distance of 760.71 feet to a 5/8 inch iron rod found.

S 51°-57'-33" E, a distance of 571.72 feet to a 5/8 inch iron rod found.

THENCE, with the Village of Valley Hi Corporation Line, the easterly line of Virginia Military Survey 4957, and the westerly line of the Don K. Miller original 195.98 acre tract, (O.R. 353, Pg. 906), S 55°-40'-02" W, a distance of 309.44 feet to a 5/8 inch iron rod found.

THENCE, with the Village of Valley Hi Corporation Line and the northerly lines of the Michael W. Siekierka original 56.454 acre tract, (O.R. 380, Pg. 365) and Mary J. Stoner original 70.67 acre tract, (Vol. 325, Pg. 219), N 51°-59'-54" W, a distance of 1265.00 feet to a point on the center of the Mad River, passing a 5/8 inch iron rod set at 1224.84 feet.

THENCE, with the Village of Valley Hi Corporation Line, the center of the Mad River and the easterly lines of the Premier Properties, A Florida General Partnership, original 25.86 acre tract, (O.R. 116, Pg. 978, Tract X, Parcel VII) and original 132.24 acre tract, (O.R. 359, Pg. 777, Parcel V (A & B)), the Charles F. Godwin 56.52 acre tract, (Vol. 374, Pg. 344), and the Michael L. Berry original 60.69 acre tract, (O.R. 215, Pg. 343), the following eighteen (18) courses:

N 43°-23'-34" E, a distance of 811.59 feet to a point referenced by a 5/8 inch iron rod set
S 53°-10'-04" E, a distance of 30.00 feet.

N 58°-51'-21" E, a distance of 181.76 feet to a point referenced by a 5/8 inch iron rod set
S 53°-10'-04" E, a distance of 20.00 feet.

N 21°-47'-19" E, a distance of 180.91 feet to a point referenced by a 5/8 inch iron rod set
S 53°-10'-04" E, a distance of 30.00 feet.

N 56°-38'-19" E, a distance of 191.93 feet to a point referenced by a 5/8 inch iron rod set
S 53°-10'-04" E, a distance of 20.00 feet.

N 40°-40'-28" E, a distance of 346.77 feet to a point referenced by a 5/8 inch iron rod set
S 53°-10'-04" E, a distance of 25.00 feet.

N 38°-53'-35" E, a distance of 204.41 feet to a point referenced by a 5/8 inch iron rod set
S 53°-10'-04" E, a distance of 20.00 feet.

N 55°-45'-42" E, a distance of 184.71 feet to a point referenced by a 5/8 inch iron rod set
S 53°-10'-04" E, a distance of 20.00 feet.

N 29°-23'-05" E, a distance of 341.76 feet to a point referenced by a 5/8 inch iron rod set
S 53°-10'-04" E, a distance of 20.00 feet.

N 23°-19'-04" E, a distance of 248.82 feet to a point referenced by a 5/8 inch iron rod set
S 53°-10'-04" E, a distance of 25.00 feet.

N 35°-28'-10" E, a distance of 450.58 feet to a point referenced by a 5/8 inch iron rod set
S 53°-10'-04" E, a distance of 20.00 feet.

N 13°-08'-14" E, a distance of 239.30 feet to a point.

S 65°-56'-35" E, a distance of 80.31 feet to a point referenced by a 5/8 inch iron rod set
S 53°-10'-04" E, a distance of 15.00 feet.

N 33°-33'-22" E, a distance of 187.53 feet to a point.

N 9°-21'-07" E, a distance of 113.96 feet to a point referenced by a 5/8 inch iron rod set
S 53°-10'-04" E, a distance of 15.00 feet.

N 71°-51'-10" E, a distance of 177.58 feet to a point referenced by a 5/8 inch iron rod set
S 53°-10'-04" E, a distance of 15.00 feet.

Lee Surveying and Mapping Co., Inc.

Land Surveys • Topography • Subdivisions • Construction Layout

117 N. Madriver St.
Bellefontaine OH 43311



Phone: (937) 593-7335
Fax: (937) 593-7444

N 51°-40'-41" E, a distance of 602.21 feet to a point referenced by a 5/8 inch iron rod set
S 53°-10'-04" E, a distance of 20.00 feet.

N 29°-31'-02" E, a distance of 558.66 feet to a point referenced by a 5/8 inch iron rod set
S 53°-10'-04" E, a distance of 20.00 feet.

N 33°-08'-51" E, a distance of 212.04 feet to a point.

THENCE, with the Village of Valley Hi Corporation Line and the south line of the Donald L. Van Hying original 51.16 acre tract, (O.R. 161, Pg. 204, Tract III), S 69°-36'-45" E, a distance of 1990.59 feet to a 5/8 inch iron rod set, passing a 5/8 inch iron rod set at 25.00 feet.

THENCE, with the Village of Valley Hi Corporation Line, the east line of Virginia Military Survey 3138, and the west line of the Donald L. Van Hying original 77.3 acre tract, (O.R. 161, Pg. 204, Tract I), S 6°-33'-59" W, a distance of 242.68 feet to the point of beginning, passing a 5/8 inch iron rod set at 208.53 feet.

Containing 324.614 acres, of which 7.077 acres are within the highway right-of-way; 233.172 acres are in Virginia Military Survey 3138, of which 0.203 acre is in Monroe Township; 21.782 acres are in Virginia Military Survey 4957, of which 7.468 acres are in Jefferson Township; 18.189 acres are in Virginia Military Survey 4948, 9423, 9876; 51.471 acres are in Virginia Military Survey 4195, 4604; 310.097 acres are in Jefferson Township and 14.517 acres are in Virginia Military Survey 4957, Monroe Township.

The basis for bearings is the easterly line of Alpine Village Subdivision at the said 0.412 acre tract, being N 4°-46'-00" W, and all other bearings are from angles and distances measured in a field survey by Lee Surveying and Mapping Co., Inc. on November 2, 1999.

Description prepared by:

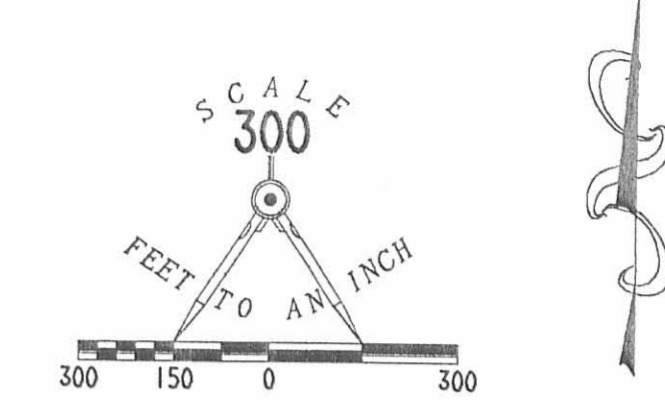
A handwritten signature in black ink, appearing to read 'J. Lee', is written over the typed name and title.

Jeffrey L. Lee
Professional Surveyor 6359
November 9, 1999



L-1600

ORIGINAL STAMP IN GREEN



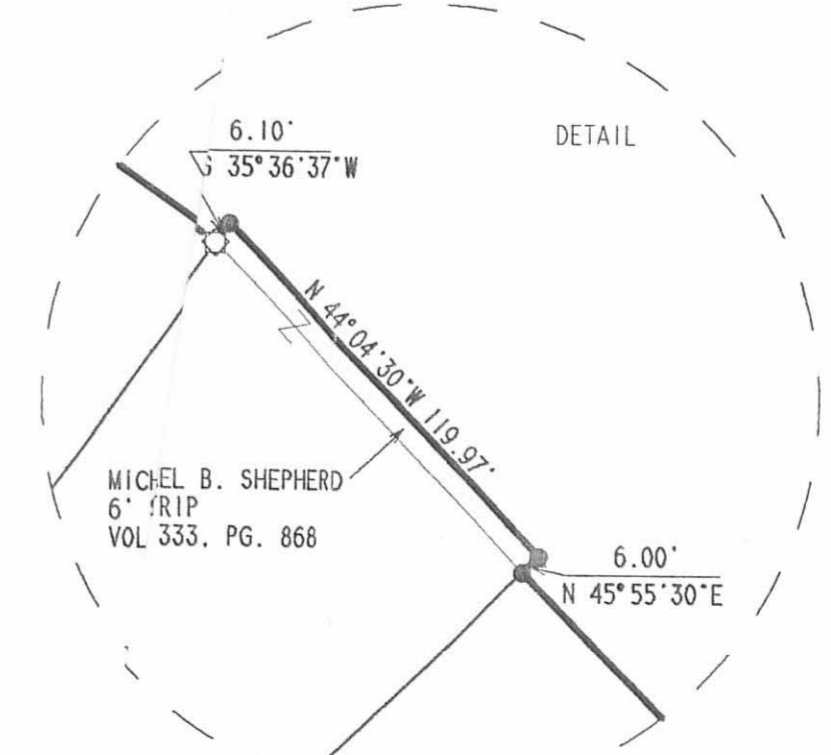
- LEGEND**
- 5/8 INCH IRON ROD SET
 - 5/8 INCH IRON ROD FOUND
 - MAG NAIL SET
 - 3/4 INCH IRON ROD FOUND
 - 1 INCH IRON PIPE FOUND
 - 1-1/2 INCH IRON PIPE FOUND
 - 1/2 INCH IRON PIPE FOUND

REFERENCES

LOGAN COUNTY ENGINEERS' FILES:
 R-4476, R-4029, R-4034, R-5762
 R-3606, R-2879, R-2759, R-4514
 R-7274, R-7269, R-5082, R-6754
 R-2555, R-5892 AND R-5872

NOTE:
 MRM INVESTMENT INC. LOTS 1, 3, 4, 5 AND 58
 OF ALPINE VILLAGE SUBDIVISION AND LOTS 69 AND 76
 OF ALPINE VILLAGE SUBDIVISION II AS DESCRIBED IN
 OFFICIAL RECORD 146, PAGE 628, PARCELS II AND III
 WERE NOT SURVEYED

**RETRACEMENT SURVEY OF THE
 MRM INVESTMENTS, INC.,
 AN OHIO CORPORATION
 ORIGINAL 268.183 ACRE TRACT
 OFFICIAL RECORD 146, PAGE 628, PARCEL I
 THE 8.362 ACRE TRACT,
 1.163 ACRE TRACT AND THE 43.998 ACRE TRACT
 OFFICIAL RECORD 136, PAGE 373
 VIRGINIA MILITARY SURVEY 3138
 VIRGINIA MILITARY SURVEY 4957,
 VIRGINIA MILITARY SURVEY 4948, 9423, 9876
 AND VIRGINIA MILITARY SURVEY 4195, 4604
 JEFFERSON AND MONROE TOWNSHIPS
 LOGAN COUNTY, OHIO**

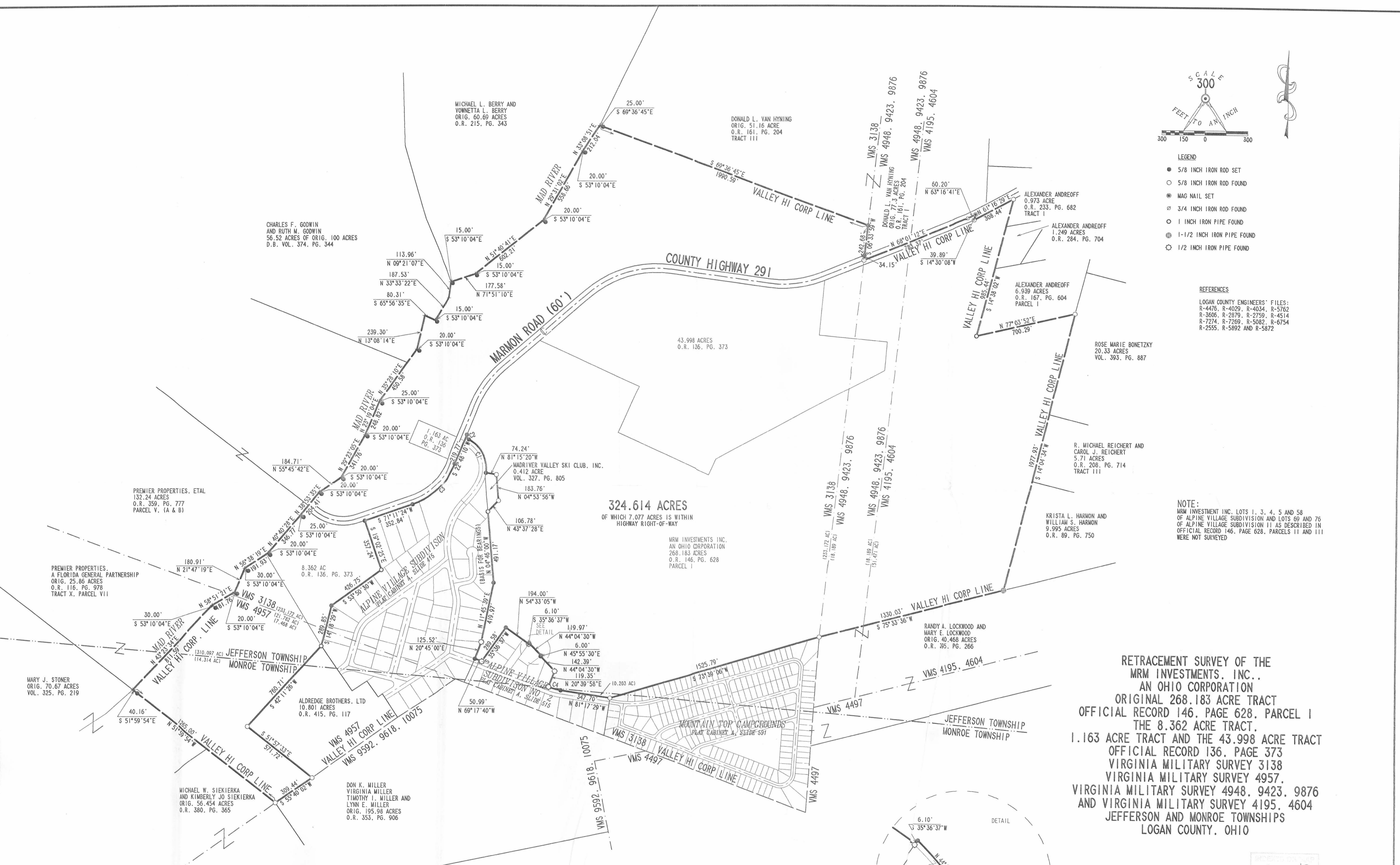


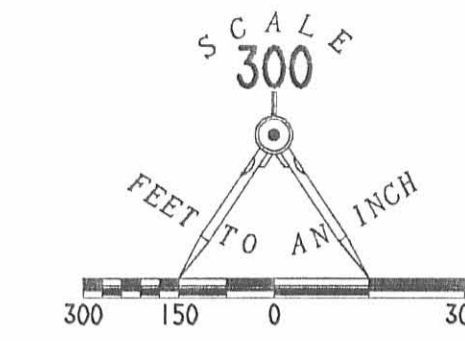
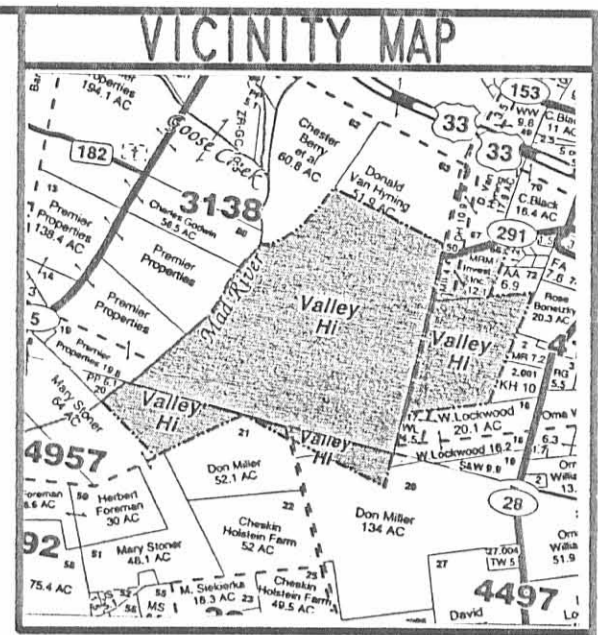
CURVE	DELTA ANGLE	RADIUS	ARC	TANGENT	CHORD	CHORD BEARING
C 1	70° 52' 53"	225.00'	278.35'	160.14'	260.94'	N 27° 19' 02" W
C 2	90° 00' 00"	25.00'	39.27'	25.00'	35.36'	N 20° 52' 28" W
C 3	48° 06' 30"	508.34'	426.82'	226.90'	414.40'	S 47° 00' 15" W
C 4	11° 56' 53"	425.74'	88.78'	44.55'	88.62'	N 75° 25' 44" W

2 WORKING DAYS
BEFORE YOU DIG
 CALL TOLL FREE 800-362-2764
 OHIO UTILITIES PROTECTION SERVICE



SURVEYED BY:
 JEFFREY L. LEE
 PROFESSIONAL SURVEYOR 6359
 NOVEMBER 2, 1999
 COPYRIGHT 1999 BY:
 LEE SURVEYING & MAPPING CO., INC.
 117 North Medriver Street
 BELLEFONTAINE, OHIO 43311
 (937) 593-7335
 D 362 MADRIWNT L-1600-1





REFERENCES
 LOGAN COUNTY ENGINEERS' FILES:
 R-4476, R-4029, R-4034, R-5762
 R-3606, R-2879, R-2759, R-4514
 R-7274, R-7269, R-5082, R-6754
 R-2555, R-5892 AND R-5872

- LEGEND
- 5/8 INCH IRON ROD SET
 - 5/8 INCH IRON ROD FOUND
 - MAG NAIL SET
 - 3/4 INCH IRON ROD FOUND
 - 1 INCH IRON PIPE FOUND
 - 1-1/2 INCH IRON PIPE FOUND
 - 1/2 INCH IRON PIPE FOUND
- ⑭ DENOTES THE NUMBER GIVEN TO EACH EASEMENT IN SCHEDULE B-SECTION II OF TITLE COMMITMENT NO. F117730

NOTES:

NUMBERS ⑭, ⑮ AND ⑯ OF SCHEDULE B-SECTION II OF THE FIRST AMERICAN TITLE INSURANCE COMPANY COMMITMENT NO. F117730, A WELL AGREEMENT GRANTED TO LOT 2 FROM LOT 3 OF ALPINE VILLAGE SUBDIVISION NO. 1, IS NOT SHOWN DUE TO A VAGUE DESCRIPTION IN OFFICIAL RECORD 26, PAGE 53, VOLUME 394, PG. 810 AND VOLUME 394, PG. 812, RESPECTIVELY.

NUMBER ⑯ OF SAID COMMITMENT, EASEMENT TO DRIP IN VOLUME 305, PAGE 22, IS NOT SHOWN AND DOES NOT AFFECT THE MRM INVESTMENTS INC. TRACTS HERON

MRM INVESTMENT INC. LOTS 1, 3, 4, 5 AND 58 OF ALPINE VILLAGE SUBDIVISION NO. 1 AND LOTS 69 AND 76 OF ALPINE VILLAGE SUBDIVISION II AS DESCRIBED IN OFFICIAL RECORD 146, PAGE 628, PARCELS II AND III WERE NOT SURVEYED

ITEM 5(B) OF THE ALTA/ACSM "MINIMUM STANDARD DETAIL REQUIREMENTS" IS DELETED HERE DUE TO THE COMPLEXITY OF THE DRAWING

ITEM 5(G), BUILDING LOCATIONS, HAS BEEN DELETED BY REQUEST OF THE CLIENT. THE PROPERTY LINE ALONE THE MAD RIVER IS SUBJECT TO CHANGE DUE TO NATURAL CAUSES. IT IS SHOWN AS SURVEYED NOVEMBER 2, 1999, AND MAY NOT REPRESENT THE ACTUAL LOCATION OF THE LIMIT OF TITLE.

PARTIAL ALTA/ACSM SURVEY OF THE
 MRM INVESTMENTS, INC.,
 AN OHIO CORPORATION
 ORIGINAL 268.183 ACRE TRACT
 OFFICIAL RECORD 146, PAGE 628, PARCEL I
 THE 8.362 ACRE TRACT,
 1.163 ACRE TRACT AND THE 43.998 ACRE TRACT
 OFFICIAL RECORD 136, PAGE 373
 VIRGINIA MILITARY SURVEY 3138
 VIRGINIA MILITARY SURVEY 4957,
 VIRGINIA MILITARY SURVEY 4948, 9423, 9876
 AND VIRGINIA MILITARY SURVEY 4195, 4604
 JEFFERSON AND MONROE TOWNSHIPS
 LOGAN COUNTY, OHIO

CERTIFICATION

I HEREBY STATE TO MRM INVESTMENTS INC. AND THE FIRST AMERICAN TITLE INSURANCE COMPANY, THAT:

THIS MAP OF PLAT AND THE SURVEY ON WHICH IT IS BASED WERE MADE: (i) IN ACCORDANCE WITH "MINIMUM STANDARD DETAIL REQUIREMENTS FOR ALTA/ACSM LAND TITLE SURVEYS," JOINTLY ESTABLISHED AND ADOPTED BY ALTA, ACSM AND NSPS IN 1997, AND INCLUDES ITEM 9 OF TABLE A THEREOF, AND (ii) PURSUANT TO THE ACCURACY STANDARDS (AS ADOPTED BY ALTA AND ACSM AND IN EFFECT ON THE DATE OF THIS CERTIFICATION) OF A RURAL SURVEY PERFORMED ON NOVEMBER 2, 1999

JEFFREY L. LEE
 PROFESSIONAL SURVEYOR 6359
 NOVEMBER 12, 1999



ORIGINAL STAMP IN GREEN

CURVE	DELTA ANGLE	RADIUS	ARC	TANGENT	CHORD	CHORD BEARING
C 1	70°52'53"	225.00'	278.35'	160.14'	260.94'	N 27°19'02"W
C 2	90°00'00"	25.00'	39.27'	25.00'	35.36'	N 20°52'28"W
C 3	48°06'30"	508.34'	426.82'	226.90'	414.40'	S 47°00'15"W
C 4	11°56'53"	425.74'	88.78'	44.55'	88.62'	N 75°25'44"W

2 WORKING DAYS
BEFORE YOU DIG
 CALL TOLL FREE 800-362-2764
 OHIO UTILITIES PROTECTION SERVICE

SURVEY OF OHIO RESORTS, INC.

Being a tract of land situated in Jefferson and Monroe Townships, Logan County, Ohio and being part of Virginia Military Survey 3138, Virginia Military Survey 4957, Virginia Military Survey 4948, 9423, 9876 and Virginia Military Survey 4195, 4604 and being more particularly described as follows:

Beginning at a railroad spike found in the center of County Highway No. 291 also known as Marmion Road and in the East line of V.M.S. 3138, said railroad spike also being the corporation line of the Village of Valley Hi and being the beginning point of a 16.96 acre tract of land conveyed by Leta M. Van Hynning to Ohio Resorts Inc., as recorded in the Logan County Deed records, Volume 340 Page 960;

thence with the centerline of said C.H. 291, N 67°30'00" E, 783.40 feet to a railroad spike, found;

thence continuing along said County Highway N 62°45'00" E, 60.20 feet to a point;

thence continuing along the boundary of the herein described tract as follows: S 14°03'00" W, 39.30 feet to a point;

thence N 60°49'44" E, 303.22 feet to a point, a railroad spike found in County C.H. 291, bears N 14°07'07" E, 25.6 feet;

thence S 14°07'07" W, 936.15 feet to an iron pin, found;

thence N 76°34'12" E, 700.64 feet to an iron pin, set;

thence S 13°47'49" W, 992.29 feet to a point;

thence S 13°21'20" W, 985.53 feet to an iron pin, set;

thence S 75°03'04" W, 1330.10 feet to an iron pin, set;

thence S 04°33'36" W, along the easterly line of V.M.S. 3138 passing from Jefferson Township to Monroe Township 1234.31 feet to an iron pin set in the south line of V.M.S. 3138;

thence N 69°15'00" W along the south line of V.M.S. 3138 a distance of 1493.31 feet to an iron pin, set at the southeast corner of Alpine Village Subdivision II;

thence N 69°52'18" W, 1099.15 feet to an iron pin, found at the eastern corner of V.M.S. 4957;

thence S 55°41'00" W, along the southerly line of V.M.S. 4957 a distance of 1232.20 feet to a point;

thence S 53°55'48" W along the aforementioned V.M.S. line 308.70 feet to an iron pin set at a southerly corner of the herein described property;

thence N 52°10'04" W passing an iron pin set at 1230.00 feet a distance of 1265.00 feet to a point, in the Mad River;

thence along the center of the Mad River as follows:
N 42°21'08" E, 335.82 feet to a point;

thence N 44°54'08" E passing from Monroe Township to Jefferson Township, 629.48 feet to a point;

thence N 44°54'08" E, 351.37 feet to a point;

thence N 41°57'08" E, 552.15 feet to a point;

thence N 48°08'10" E, 301.16 feet to a point;

thence N 21°46'01" E, 341.19 feet to a point;

thence N 33°14'06" E, 524.98 feet to a point;

thence N 28°57'01" E, 543.87 feet to a point;

thence N 42°53'11" E, 206.36 feet to a point;

thence N 04°35'47" E, 211.57 feet to a point, at which Peter's Ditch enters the Mad River;

thence along the center of Peter's Ditch as follows:
S 69°32'15" E, 79.28 feet to a point;

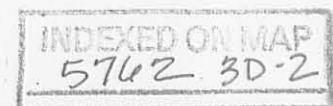
thence N 71°27'46" E, 140.37 feet to a point;

thence N 51°42'13" E, 495.57 feet to a point;

thence N 29°12'38" E, 861.01 feet to a point;

thence leaving Peter's Ditch along the northerly line of the herein described property, S 70°07'33" E, passing an iron pin set at 25.00 feet a distance of 1990.89 feet to an iron pin found in the east line of V.M.S. 3138;

thence S 06°08'47" W along the east line of V.M.S. 3138 a distance of 242.68 feet to the place of beginning and containing 395.698 acres more or less, excepting therefrom the following tracts, as shown on a plat of the above described property and attached hereto and made a part of this instrument, know as Tract A and containing 11.00 acres owned by Rebluco, Inc., Tract 2, recorded in Deed Book 327 page 166; Tract B, containing 31.17 acres known as Alpine Village Subdivision, Connolly Construction Co. recorded in Deed Book 298 page 390; Tract C, containing 0.412 acres owned by MadRiver Valley Ski Club, Inc., recorded in Deed Book 327, page 305; Tract D, containing 1.720 acres owned



by Reblico, Inc., Tract 1 recorded in Deed Book 327 page 166,; Tract E containing 1.428 acres, known as Alpine Village Subdivision II recorded in Plat Book 6-F, page 29 (dedicated streets only); Tract F, containing 0.287 acres owned by Michael B. Shepherd, (Lot 74 Alpine Village Subdivision II and a 6 foot strip of land adjacent to the N.E. side of Lot 74), recorded in Deed Book 333 page 868, and containing after said exceptions 349.681 acres more or less.

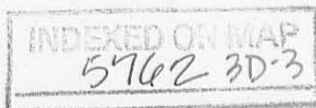
Also Lots Numbered 1, 2, 3, 4, 5, and 58 of ALPINE VILLAGE SUBDIVISION as the same are numbered and delineated on the recorded plat of said subdivision as recorded in Plat Book 4 page 105, Recorder's Office, Logan County, Ohio.

Also Lots Numbered 60 through 73 inclusive and Lots Numbered 75 and 76 of ALPINE VILLAGE SUBDIVISION II as the same are numbered and delineated upon the recorded plat thereof, of said plat, as recorded in Plat Book 6-F, page 29, Recorder's Office, Logan County, Ohio.

NOTE NUMBER ONE: The acreage herein reported of 349.681 acres needs to be adjusted; in that, included within said acreage are lots of Alpine Subdivision Number 2. A proper adjustment of which leaves a total acreage of 344.747 acres. This is accomplished by adding back to 349.681 acres Exceptions "E" of 1.428 acres and Exception "F" of 0.287 acres, and then subtracting therefrom 6.633 acres (the total acreage of Alpine Subdivision Number 2), and further subtracting .016 of an acre, being a tract of land conveyed to Michael B. Shepherd in Volume 333 at Page 868 of the Deed Records of Logan County, Ohio, leaving a balance of 344.74 acres.

* * * * *

In addition thereto, there is conveyed to the Grantee herein all of Grantor's interest in and to easements of record, and most especially a certain easement from John W. Shoots and Helen W. Shoots to Ohio Resorts, Inc., being a 40 foot easement for ingress and egress from County Road 5 to the property herein conveyed, which easement is dated October 29, 1962 and recorded in Deed Record Volume 284 at Page 594 of the Deed Records of Logan County, Ohio. Also, easements set forth in Deed Record Volume 291 at Page 606 and Volume 290 at Page 332 of the Deed Records of Logan County, Ohio.



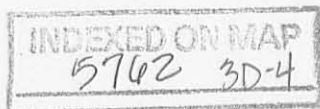
THE ACREAGE HEREIN CONVEYED IS SET FORTH ON THE AUDITOR'S DUPLICATE AS FOLLOWS:

<u>TOWNSHIP</u>	<u>V.M.S. NUMBER</u>	<u>ACREAGE</u>
JEFFERSON	3138	101.794
JEFFERSON	3138	66.010
JEFFERSON	3138	41.348
JEFFERSON	3138	24.340
JEFFERSON	3138	5.990
JEFFERSON	4195	38.000
JEFFERSON	4195	12.060
JEFFERSON	4957	18.000
JEFFERSON	4948	12.000
JEFFERSON	4948	<u>4.900</u>
	<u>TOTAL</u>	324.442
MONROE	3138	9.515
MONROE	4957	<u>5.94</u>
	<u>TOTAL</u>	15.455

324.442 JEFFERSON

15.455 MONROE

339.897



BREAKDOWN OF ACREAGE

JEFFERSON TOWNSHIP

V.M.S. 4195 - 4604	59.09 ACRES	^{OUTSIDE} _{CO.P.} -12.06 = 47.03 A.
V.M.S. 4948 - 9423 - 9876	17.89 ACRES	-4.90 = 12.99 A.
V.M.S. 3138	228.68 ACRES	✓
V.M.S. 4957	<u>7.56</u> ACRES	✓
<u>TOTAL</u>	313.22 ACRES	

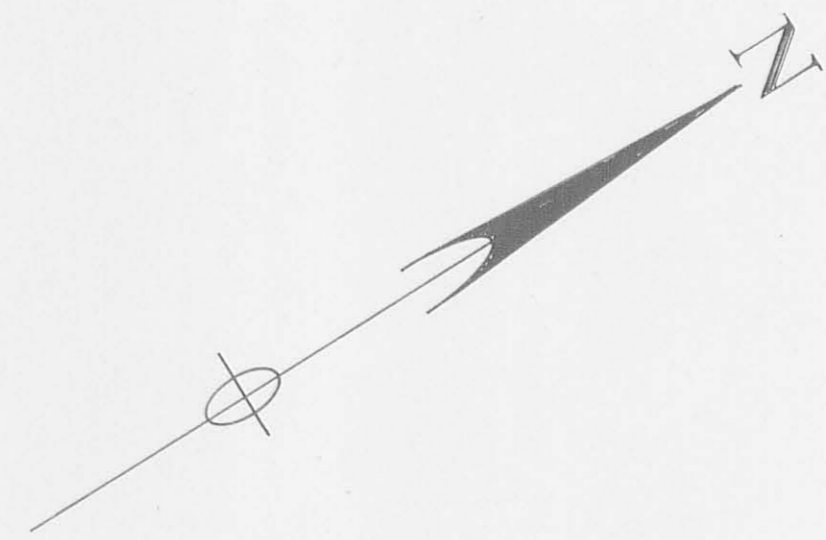
MONROE TOWNSHIP

V.M.S. 4957	14.57 ACRES	✓
V.M.S. 3138	<u>16.97</u> ACRES	✓
<u>TOTAL</u>	31.54 ACRES	

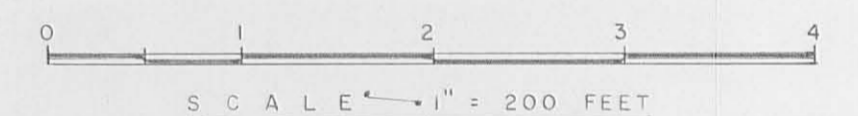
TOTAL ACREAGE: 344.76 ACRES

INDEXED ON MAP
5762 3D-5

**PLAT OF SURVEY OF
OHIO RESORTS, INC.
LOGAN COUNTY, OHIO
JEFFERSON & MONROE TOWNSHIPS**
V.M.S. 3138, 4957, (4948,9423,9876), (4195,4604)



PERIMETER DESCRIPTION		
POINT TO POINT	DISTANCE	BEARING
1 - 2	783.4000	N 67 30 00 E
2 - 3	60.2000	N 62 45 00 E
3 - 4	39.3000	S 14 03 00 W
4 - 5	308.2216	N 60 49 44 E
5 - 6	986.1520	S 14 07 07 W
6 - 7	700.6393	N 76 34 12 E
7 - 8	992.2909	S 13 47 49 W
8 - 9	985.5325	S 13 21 20 W
9 - 10	1330.1031	S 75 03 04 W
10 - 11	1234.3102	S 04 33 36 W
11 - 12	1493.3120	N 69 15 00 W
12 - 13	1099.1500	N 69 52 18 W
13 - 14	1232.2000	S 55 41 00 W
14 - 15	308.7023	S 53 55 48 W
15 - 16	1265.0000	N 52 10 04 W
16 - 17	335.8207	N 42 21 08 E
17 - 18	629.4752	N 44 54 08 E
18 - 19	351.3696	N 44 54 08 E
19 - 20	552.1500	N 41 57 08 E
20 - 21	301.1576	N 48 08 10 E
21 - 22	341.1909	N 21 46 01 E
22 - 23	524.9787	N 53 14 06 E
23 - 24	243.8727	N 28 57 01 E
24 - 25	206.3636	N 42 53 11 E
25 - 26	211.5718	N 04 35 47 E
26 - 27	79.2819	S 69 32 15 E
27 - 28	140.3668	N 71 27 46 E
28 - 29	495.5698	N 51 42 13 E
29 - 30	861.0080	N 29 12 38 E
30 - 31	1990.8900	S 70 07 33 E
31 - 1	242.6849	S 06 08 47 W



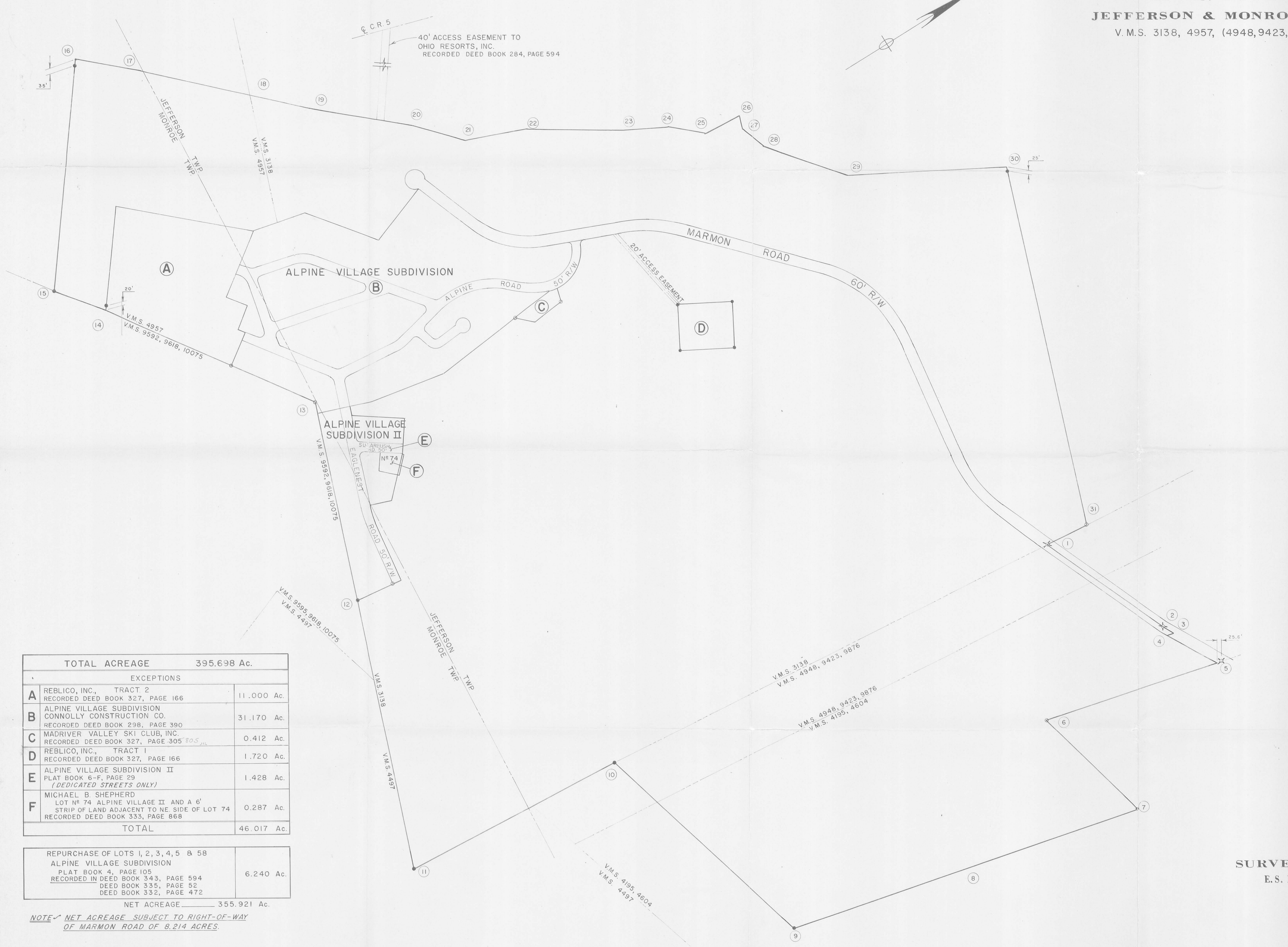
LEGEND

- X R.R. SPIKE FOUND
- IRON PIN SET
- IRON PIN FOUND

TOTAL ACREAGE		395.698 Ac.
EXCEPTIONS		
A	REBLICO, INC., TRACT 2 RECORDED DEED BOOK 327, PAGE 166	11.000 Ac.
B	ALPINE VILLAGE SUBDIVISION CONNOLLY CONSTRUCTION CO. RECORDED DEED BOOK 298, PAGE 390	31.170 Ac.
C	MADRIVER VALLEY SKI CLUB, INC. RECORDED DEED BOOK 327, PAGE 305	0.412 Ac.
D	REBLICO, INC., TRACT 1 RECORDED DEED BOOK 327, PAGE 166	1.720 Ac.
E	ALPINE VILLAGE SUBDIVISION II PLAT BOOK 6-F, PAGE 29 (DEDICATED STREETS ONLY)	1.428 Ac.
F	MICHAEL B. SHEPHERD LOT # 74 ALPINE VILLAGE II AND A 6' STRIP OF LAND ADJACENT TO NE. SIDE OF LOT 74 RECORDED DEED BOOK 333, PAGE 868	0.287 Ac.
TOTAL		46.017 Ac.

REPURCHASE OF LOTS 1, 2, 3, 4, 5 & 58 ALPINE VILLAGE SUBDIVISION PLAT BOOK 4, PAGE 105 RECORDED IN DEED BOOK 343, PAGE 594 DEED BOOK 335, PAGE 52 DEED BOOK 332, PAGE 472	6.240 Ac.
NET ACREAGE	355.921 Ac.

NOTE - NET ACREAGE SUBJECT TO RIGHT-OF-WAY
OF MARMON ROAD OF 8.214 ACRES.



SURVEYED & PLATTED BY
E.S. PRESTON ASSOCIATES, INC.
939 W. GOODALE STREET
COLUMBUS, OHIO

June Lazdins 5/5/75
JUNIE LAZDINS
REGISTERED SURVEYOR NP 6213