

Sanmead survey Mar. 13th 1916

R. P. STUDLEY & Co., Manufacturing

Ed. R. Wagner }
 Hermal Magnor }
 STATION. ALIGNMENT. DEFLECTION. REMARKS.

Durvey 100 a for Mollie S. Denmark in Duns 10951 }
 8925 }
 8946 }
 10121 }

Course of road & line of survey N 87° W N 8° W

(1) Start 20' of stone in road S 82° W
 at 1907 1/2 fall 20' of stone & mark 5" in top S 91° E
 Mollie S. Denmark & J. B. Loney A. Patterson

Connect course & distance N 58° 2' W 195.5' = 27.62 chains

(2) Start 25' E of stone S. W. L. Denmark N 8° W
 at 2231 fall 27' E of line fence in between
 Mollie S. Denmark & J. B. Loney A. Patterson
 at 2233 1/2 set stake in line fence = N 91° E 100 a
 Connect course & distance N 8° W 2230 feet = 33.28 chains

Note of the Duns 10591 & Mine Denmark land 2 1/2 to 4 N 8° W 19 1/2 chains

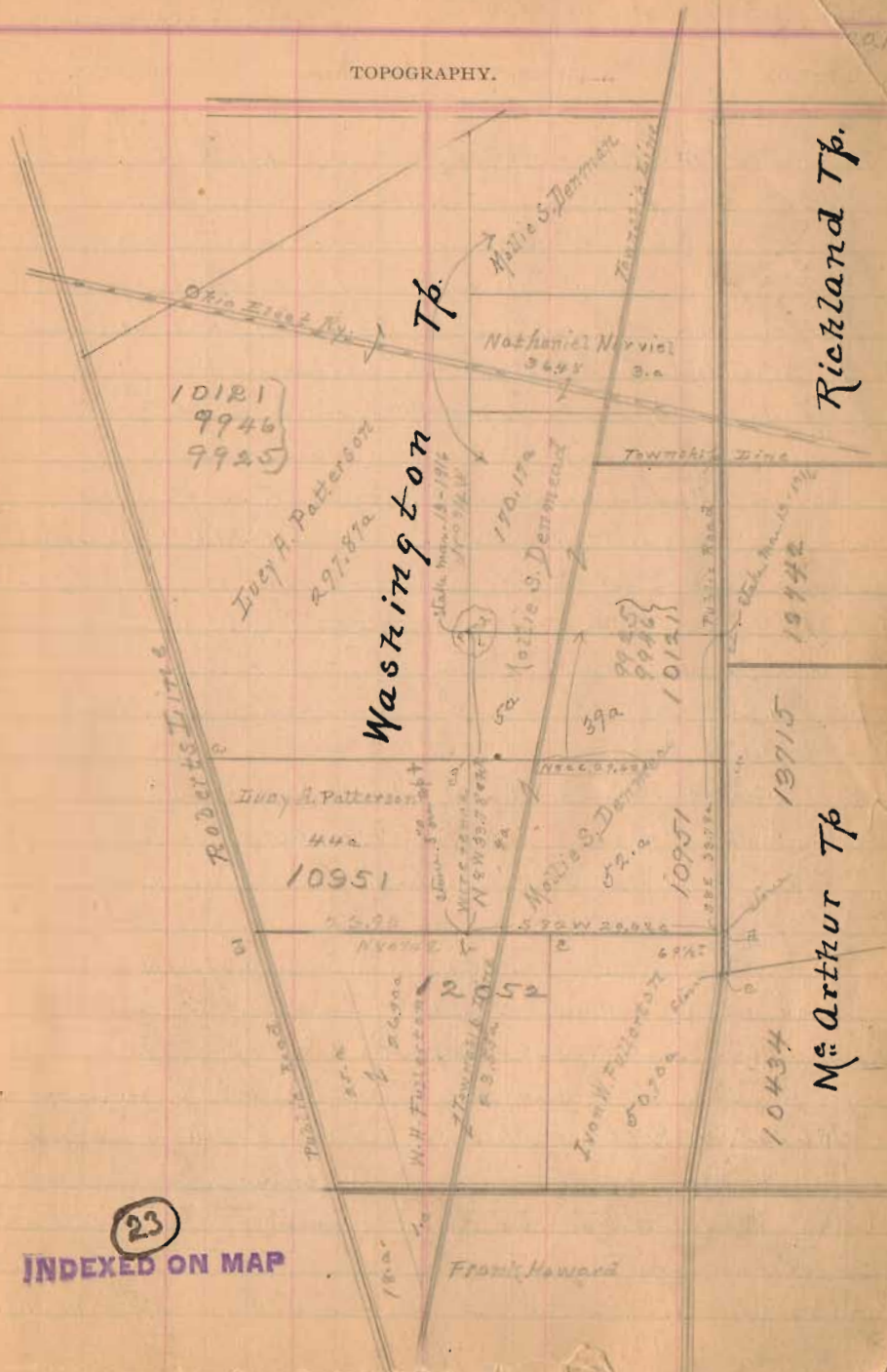
(3) Start at 7 2231 of (2) N 82° E
 at 636 set 7' line
 640 " N 13/4
 1100 " N 5 1/4 at 1900 set 7' dist
 1956' E line Duns 10951 in front road at N 62° 100 a
 Connect course & distance N 82° E 1955' = 29.62 chains

(4) Start at stone Duns & Denmark
 S 8° W with line
 at 2230' set 7' in road S 82° E 100 a
 Connect course & distance N 8° W 2230' = 33.74 chains

Note of Duns 10951 f to j = N 8° W, 14.28 chains
 The North line of Duns 10951 & S line 10951 is lost and
 unknown, the distances, 2 to f & 4 to g taken from record book
 of original survey (see Record Office) which specifies the width of
 survey 10951 (North & South) as 7 1/2 poles.

The 100 acres, 2 to i, j & d, sold by Mollie S. Denmark to Wagner
 and divided as follows In Wash. Duns 10951 = 40.75
 In McArthur Tp. Duns 10951 = 52.25 = 39.0

TOPOGRAPHY.



23
 INDEXED ON MAP

Set corners of Mollie S. Denmark at ...