

Not compared

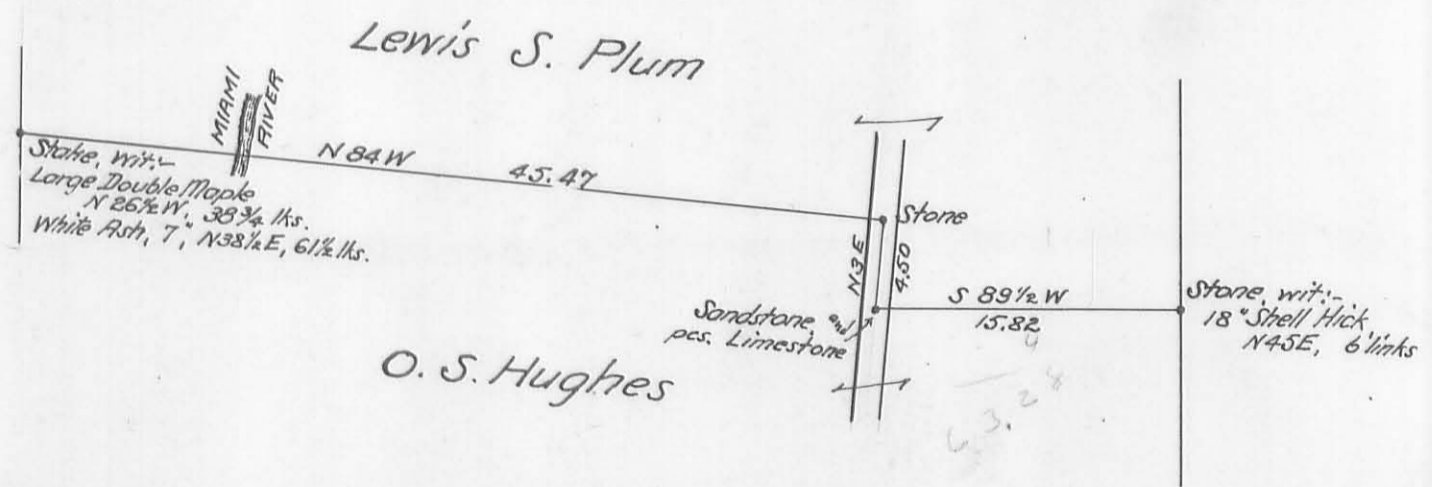
Surveyed for —
Lewis S. Plum

Pt. Sec. 23, T. 7. R. 8

Washington Tp.

May 14, 1907

(162)
INDEXED ON MAP



O. C. Fitchey } ch. cr.
Fred Jackson }

Field Notes Book 55
pages 8 and 9

181-288
1567

May 14/07

Lewis Oliver's S. Line

Line # 1
Cal. W. line Kauffman N.O.E.
" by deed N 3 W

Present bearing is 3° left

Hick N 42 E

+

5

N 45 E

Meas. from Hick witness
1/18" chain found remain
of old stake. Set stone
with 18" Shell Hick N 45 E, 6 lbs

Random S 89 1/4 W

at 15.70 set stake in E. side
of gravel on road, 14 1/2 lbs N of
line is run up in fence line

at 15.82 set stone cent
gravel in road

Sandstone & several pieces
limestone

Oliver Pickett } Ch. Cr.
Fred Jackson }

Line # 2

North (Random) Set W. 25 lbs
at 4.49, set stake at west
side of gravel ^{and} in fence
line to west

Corrected line - with cent
road. at 4.52 set stone
in cent road, 10 lbs E. of
stake N 3 E

Map Book D Page 8

102
INDEXED ON MAP

Line # 3

Random N 84 W
at 34.00 stake at E bank river

34.73 W. bank of river
bearing river S 16 1/2 W

" 45.37 Came out 15 links

South of stake set for corner from
Maple W. W.:

Large Double Maple N 2 1/2 W, 38 3/4 lks

White Ash 7", N 38 1/2 E, 6 1/2 lks

add 10 lks at E end

Bearing W. line, N 1/4 - E

Map Book D Page 8

(102)
INDEXED ON MAP