

Took fence line at "H" measured
West.
Marked 1929 ch
East line of 135 Acres at 36.45 ch
Cover + McKinnon at 52.59 ch
Total 82.16 ch
At B found some tile but stone
was gone

Random line 15 links south of Q
S 82° E 22 1/2" " at B
True Bearing of line S 81° 50' E
Line A-B Measured 24.96 ch
N 7 1/2° E

Line A-D = 83.03 to 23/links N of
Post N 86° 05' E

A-C = 46.12 to post.

E-D = 11.18 ch }
E-F = 5.16 } N 6 3/4° E
E-M = 5.95 }

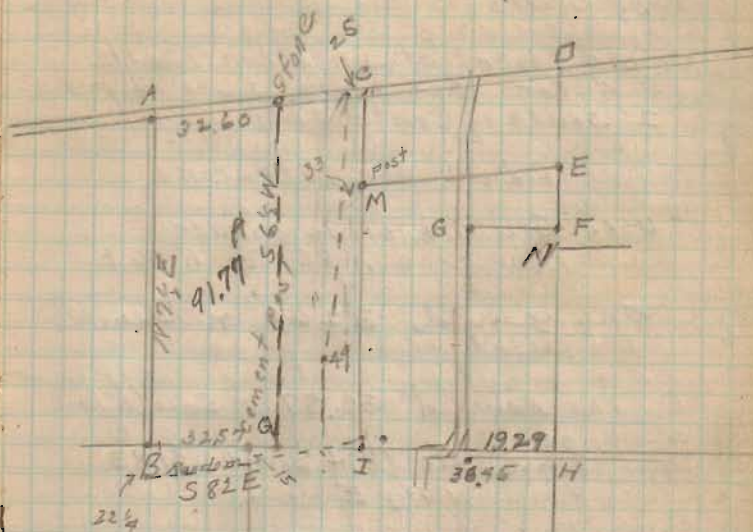
Line C-M = 11.33 ch

C-I = 34.35 to @ ditch

Random 56 W

G-F = 10.49 to @ rd N 85° W

WASHINGTON TWP



32.16
52.59
24.96
32.16
32.00

1076

INDEXED ON MAP