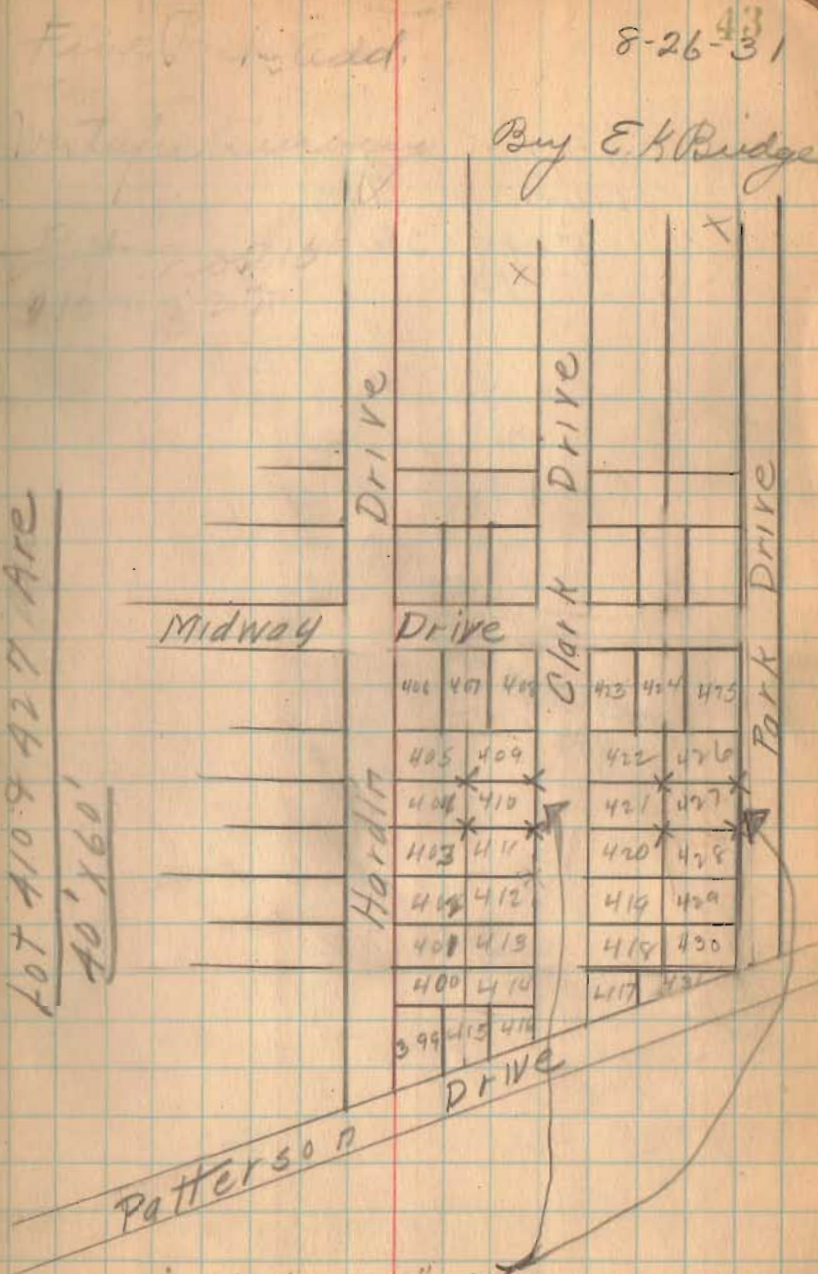


Westafer Survey,  
 Lots. 410-427  
 Five Parks Addition  
 Washington Twp.

INDEXED ON MAP

1242

Lot 410-9 427 ARE  
 40' x 60'



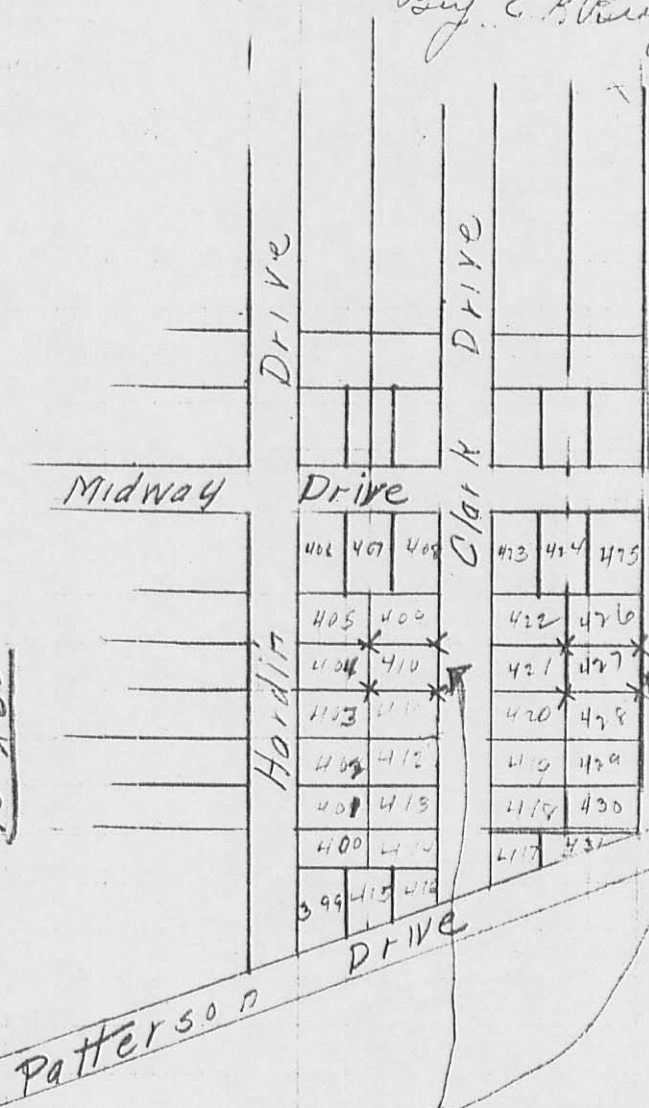
X indicates 6" x 6" Con. posts  
 with cross in top.

Westafer Survey  
 Lots 410 - 427  
 Five Parks Addition  
 Washington Twp.

INDEXED ON MAP

1242 IP

LOT 410 & 427 ARE  
 40' X 60'

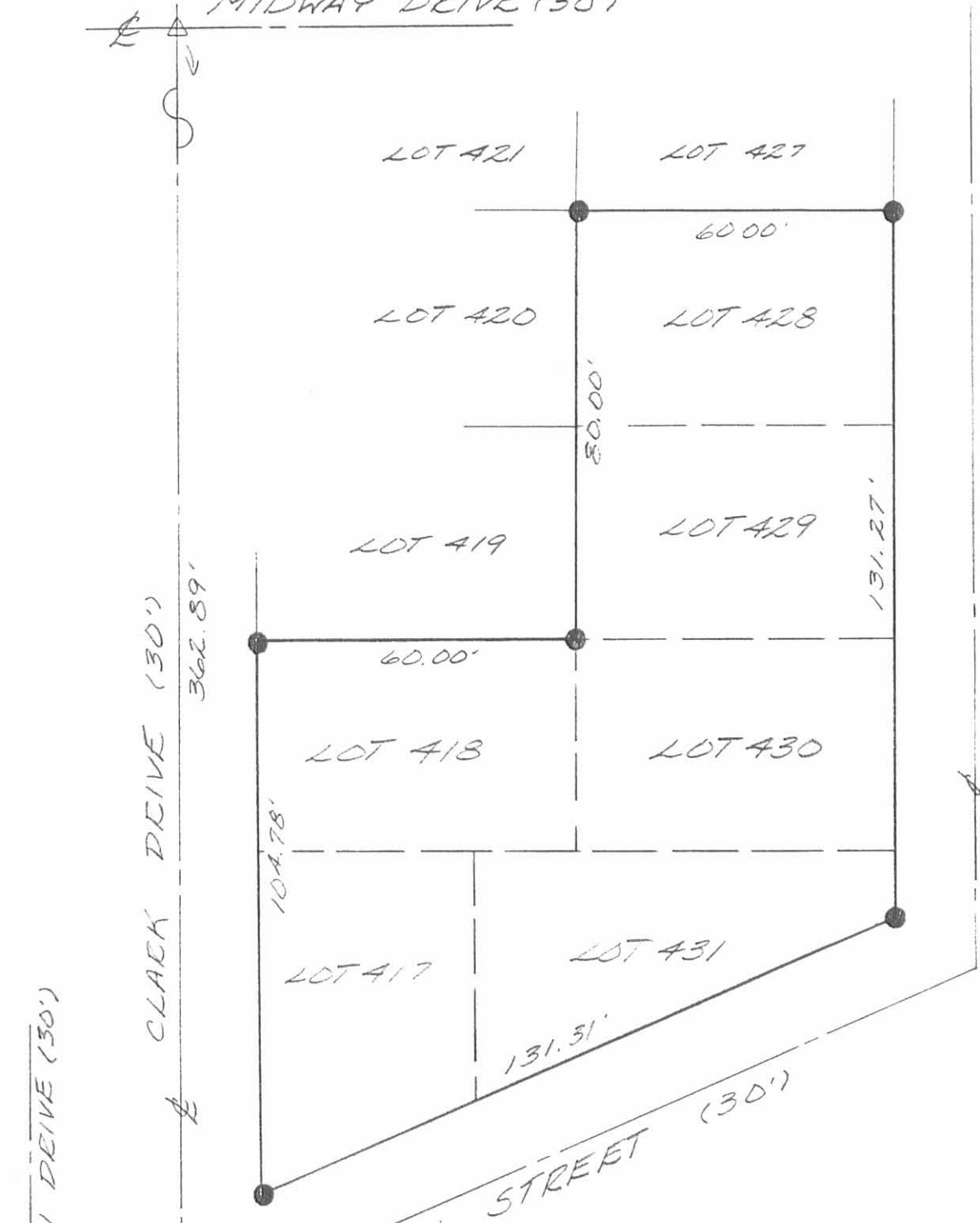


8-26-43

By E. K. [unclear]

x indicates 6" x 6" Con. posts  
 with cross in top.

MIDWAY DRIVE (30')

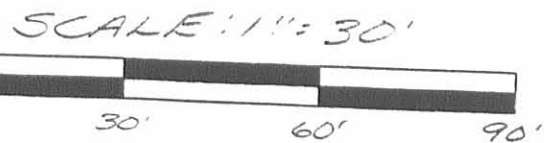


LEGEND.  
 Δ = R.R. SPIKE FOUND  
 ○ = 5/8 INCH IRON BAR FOUND  
 ● = 5/8 INCH IRON BAR SET

PATTERSON SURVEY OF LOTS 417, 418, 428, 429, 430, 431 IN 5 PARKS ADDITION, WASHINGTON TOWNSHIP, LOGAN COUNTY, OHIO FOR DONNA MITCHELL et al. JULY 10, 1992

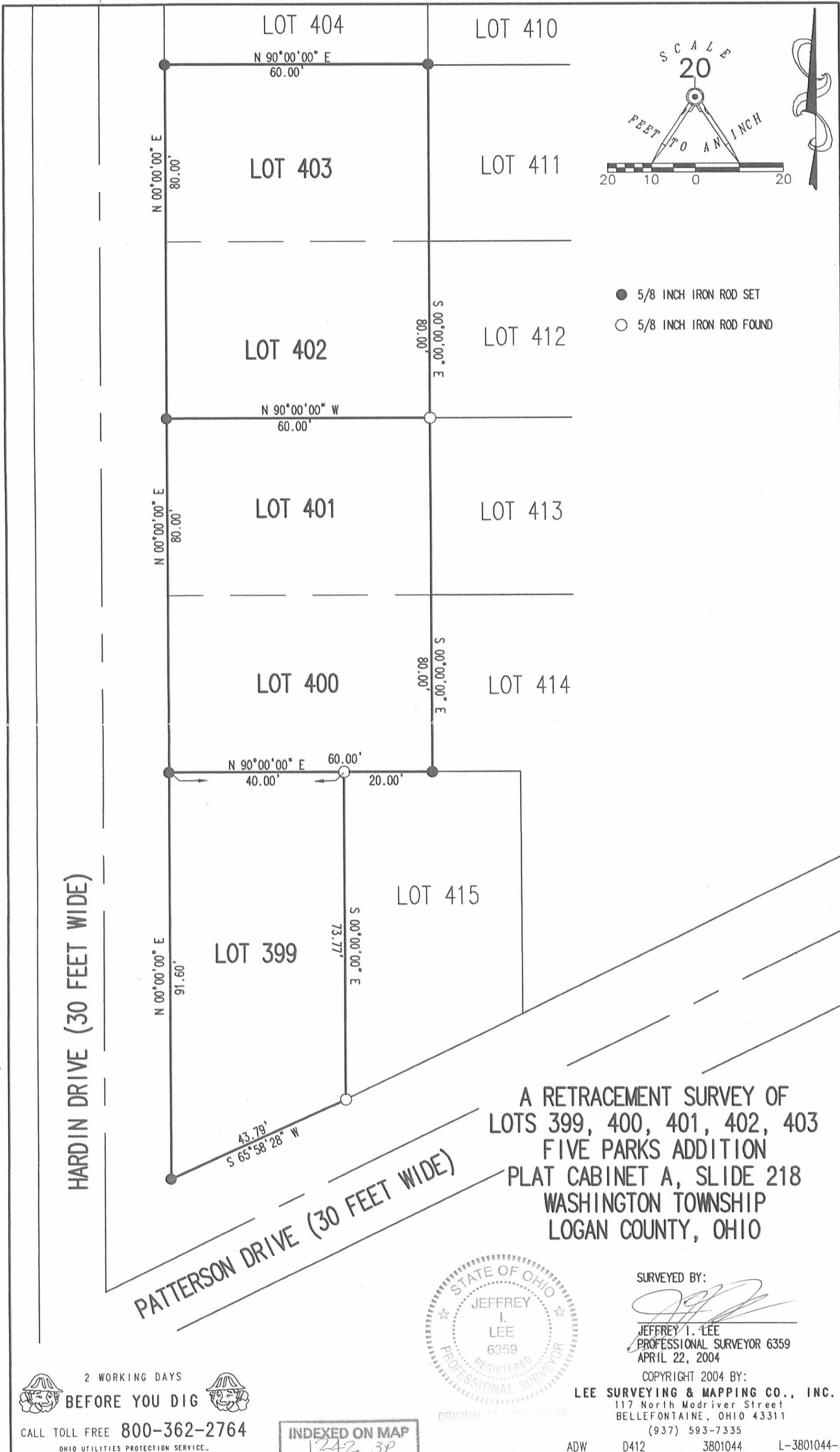


INDEXED ON MAP 1242 2P



*Leslie H. Geeslin*  
 LESLIE H. GEESLIN  
 RUSHSVLVANIA, OH  
 (513) 468-2793

RD 4-26-04 SMJ/ML



2 WORKING DAYS  
BEFORE YOU DIG  
CALL TOLL FREE 800-362-2764  
OHIO UTILITIES PROTECTION SERVICE.

INDEXED ON MAP  
1242-3P

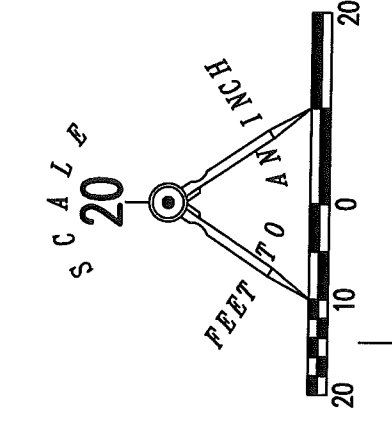
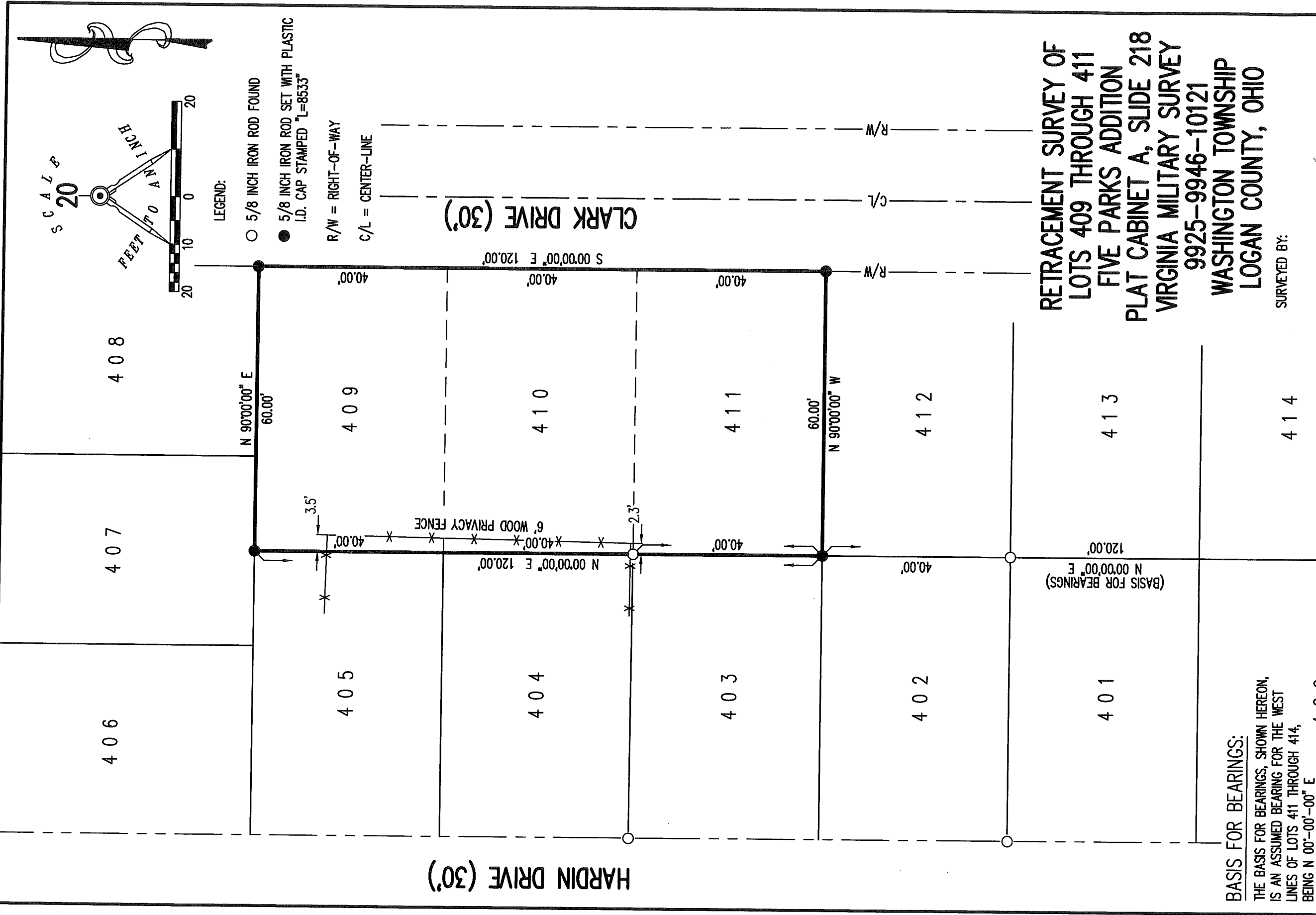


SURVEYED BY:  
JEFFREY I. LEE  
PROFESSIONAL SURVEYOR 6359  
APRIL 22, 2004  
COPYRIGHT 2004 BY:  
LEE SURVEYING & MAPPING CO., INC.  
117 North Madriver Street  
BELLEFONTAINE, OHIO 43311  
(937) 593-7335  
ADW D412 3801044 L-3801044-3



APPROVE

INDEXED ON MAP  
1242



LEGEND:  
 ○ 5/8 INCH IRON ROD FOUND  
 ● 5/8 INCH IRON ROD SET WITH PLASTIC I.D. CAP STAMPED "L-8533"  
 R/W = RIGHT-OF-WAY  
 C/L = CENTER-LINE

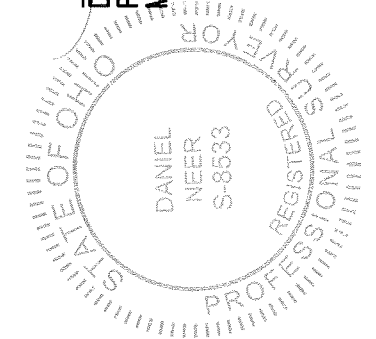
RETRACEMENT SURVEY OF  
 LOTS 409 THROUGH 411  
 FIVE PARKS ADDITION  
 PLAT CABINET A, SLIDE 218  
 VIRGINIA MILITARY SURVEY  
 9925-9946-10121  
 WASHINGTON TOWNSHIP  
 LOGAN COUNTY, OHIO

BASIS FOR BEARINGS:  
 THE BASIS FOR BEARINGS, SHOWN HEREON,  
 IS AN ASSUMED BEARING FOR THE WEST  
 LINES OF LOTS 411 THROUGH 414,  
 BEING N 00°-00'-00" E 400

THIS SURVEY WAS PREPARED IN THE ABSENCE OF  
 A COMPLETE AND ACCURATE TITLE SEARCH AND  
 DOES NOT GUARANTEE TITLE.

2 WORKING DAYS  
**BEFORE YOU DIG**  
 CALL TOLL FREE **800-362-2764**  
 OHIO UTILITIES PROTECTION SERVICE.

SURVEYED BY:



DANIEL A. NEER  
 PROFESSIONAL SURVEYOR NO. 8533  
 MARCH 15, 2018

COPYRIGHT 2018 BY:  
**LEE SURVEYING & MAPPING CO.**  
 117 North Madriver Street  
 BELLEFONTAINE, OHIO 43311  
 (937) 593-7335  
 WWW.LSMINC.US  
 surveys@lsminc.us

KSS 00318 63510318 L-6351-3