

Orchard Island.

S. 12-22 W.

50-53

25.0

12.0

18-40

1.7

5.98-31.5

17.2

5.20 W.

10.0

S. 11-15 E.

5.

12.5000

8.7

3.0 S. 7 N

10.0 S. 10-11 E.

150.0

S. 37-42 W

22.6

5.78

6.2

0.0

0.0

0.0

0.0

0.0

0.0

0.0

0.0

0.0

0.0

0.0

0.0

0.0

0.0

0.0

0.0

0.0

0.0

0.0

0.0

0.0

0.0

0.0

0.0

Concrete
Aprak

Hotel.

1045

INDEXED ON MAP

4-17-5

9

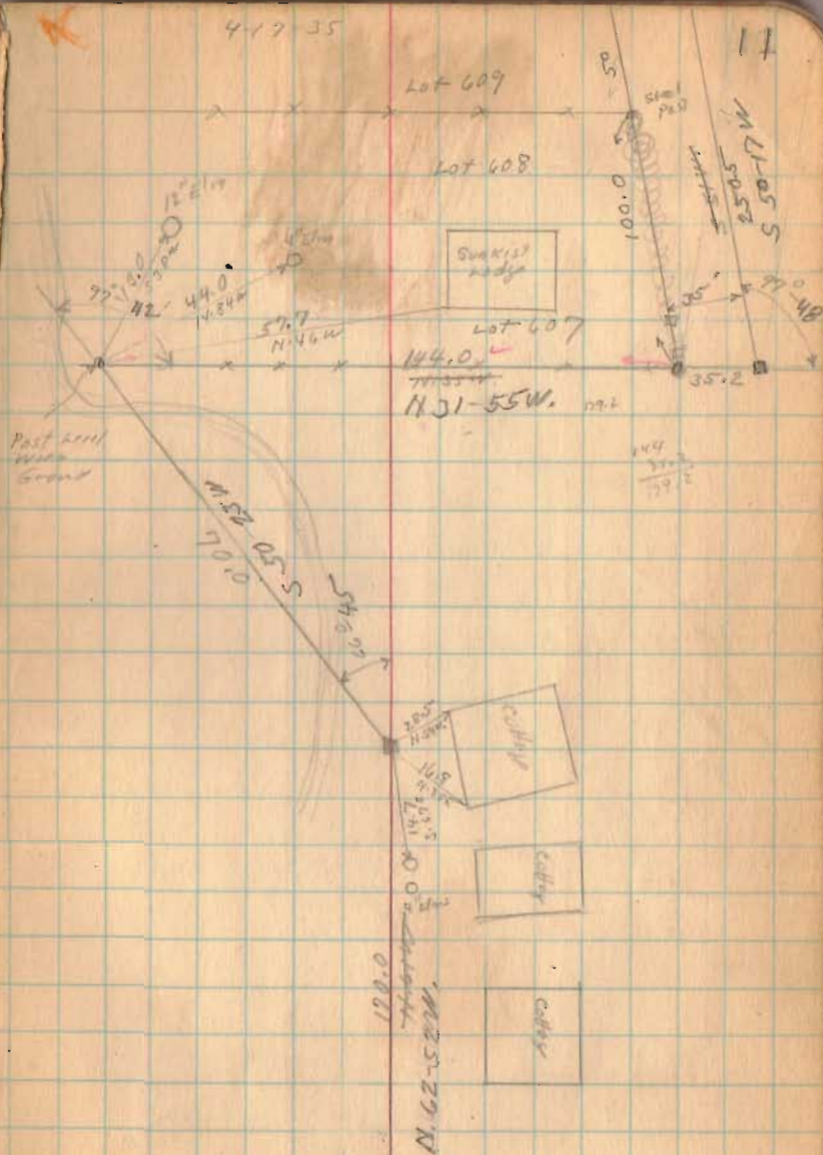
Orchard Island

(See Plan F-44 for map)

S-18

1645

INDEXED ON MAP



Orchard Island

INDEXED ON MAP

4-17-33

13

