

Road 33
Washington Township

60' Road

Commissioners Journal Vol. 4 Page 139
1834

stated 50' wide,

Sta. 1-3-5-7-9 etc.

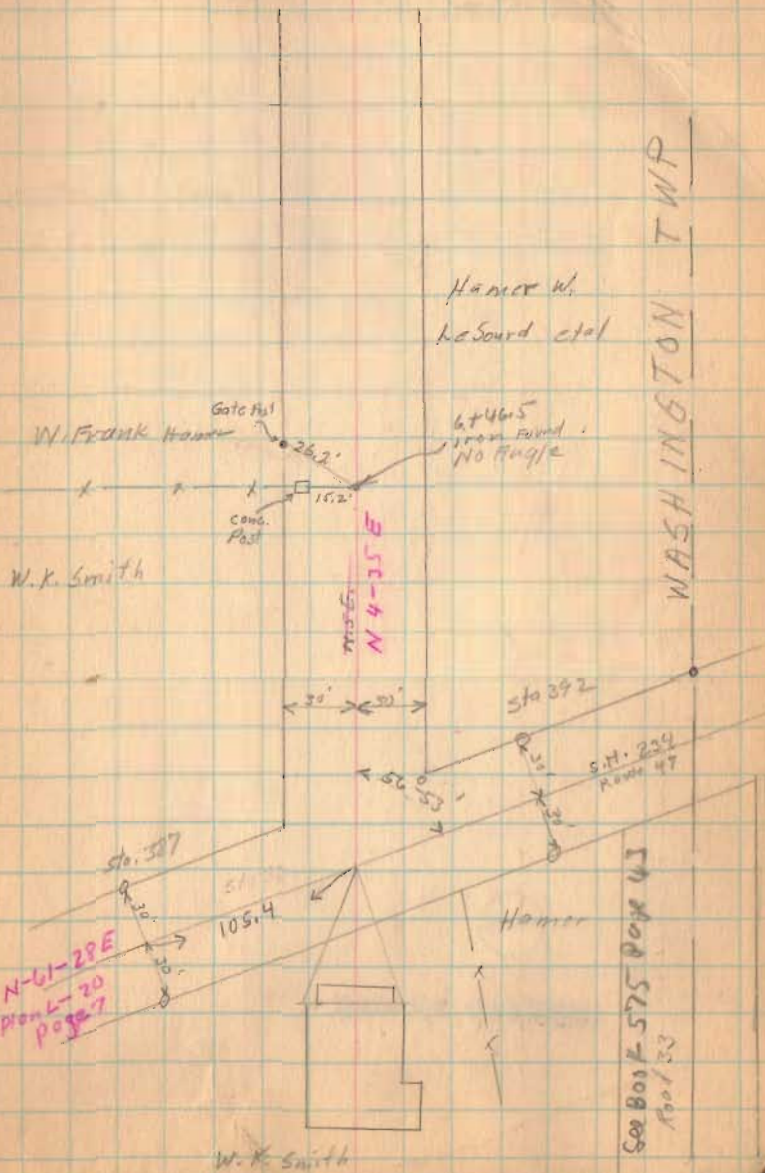
Petition for reduction in width of this
road was made in 1935. Comm. Book Y-530
Petition not granted - width to remain
60' - Commissioners Book Y - Page 543-544

1656

INDEXED ON MAP

May 18 1935
clear
Filing 47
E. care
Steve
Wagner

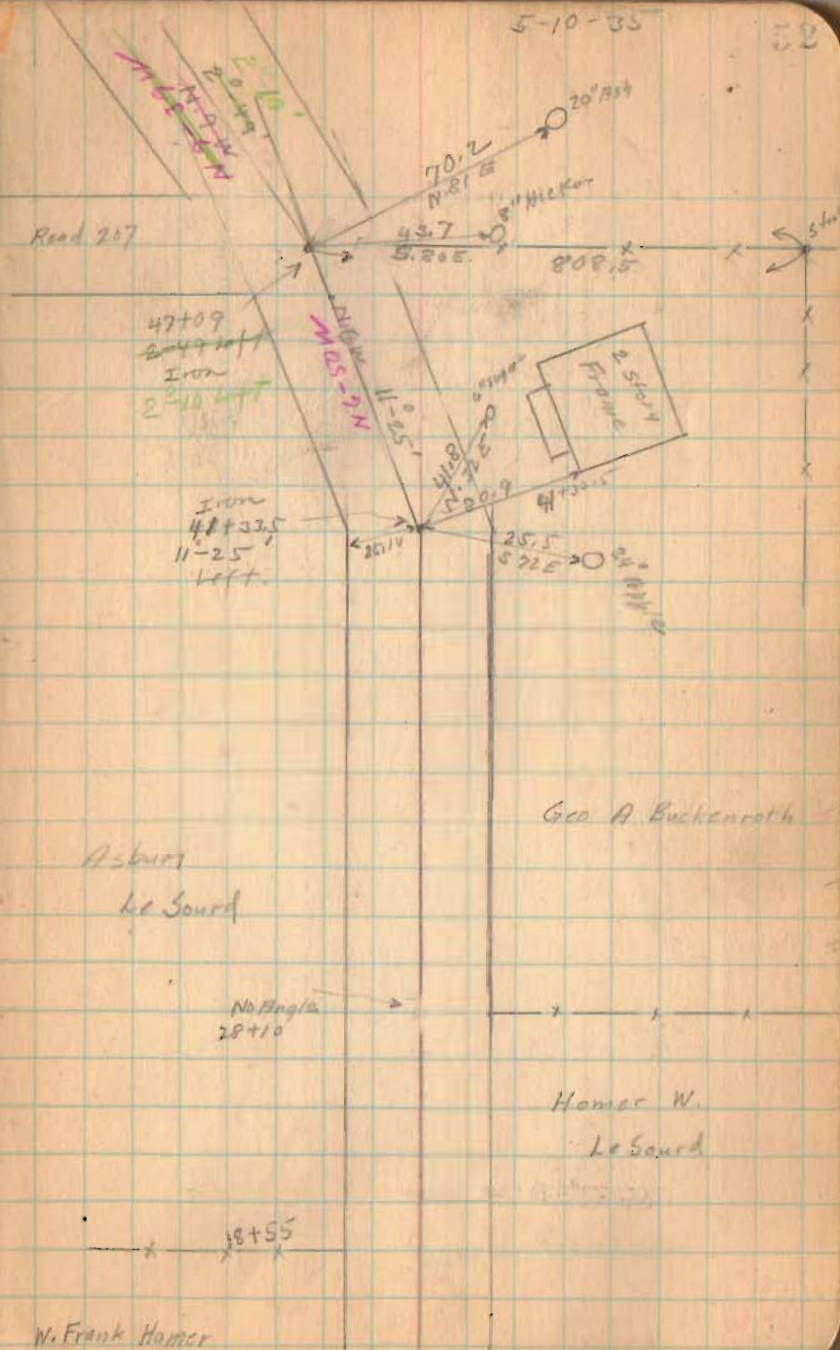
11



Road 33

1656

INDEXED ON MAP



Road 33

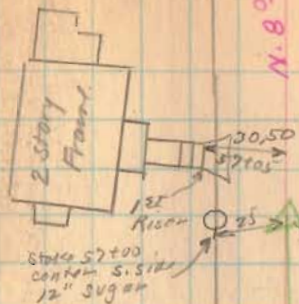
Sta. 47+00 TO 57+00
changed to a
straight line
as shown

1656

INDEXED ON MAP

5-10-35

58

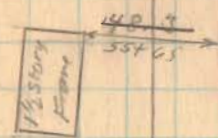


N. 8° 34' W

57+00
0° 26' Right

(I.P. Placed in)
Position 1964

Sta. 57+00
Center S. Side
12" Sugar



24" core 53+00

N. 10° 56' N

Andrew J. Neer

Andrew J. Neer



24" core

Road. 33

5-10-35 36

24 + 10.6
70 + 89.5
93 + 57
73 + 62.0

N 4-40 E

SEC. LINE
STM 74+74
SET 4/69

Bdy
33-7.20

W.A. Moore

A.J. Neer

Bradley Ditols

6.50
6.00

3/4" post 11/69

74+10.6 Mil. Longbrake

93+57

A.J. Neer

STA 73+62.0

Iron
70+89.5

13.24 Right

(Fd. 1964)

130/4

25116 25116

1656

INDEXED ON MAP

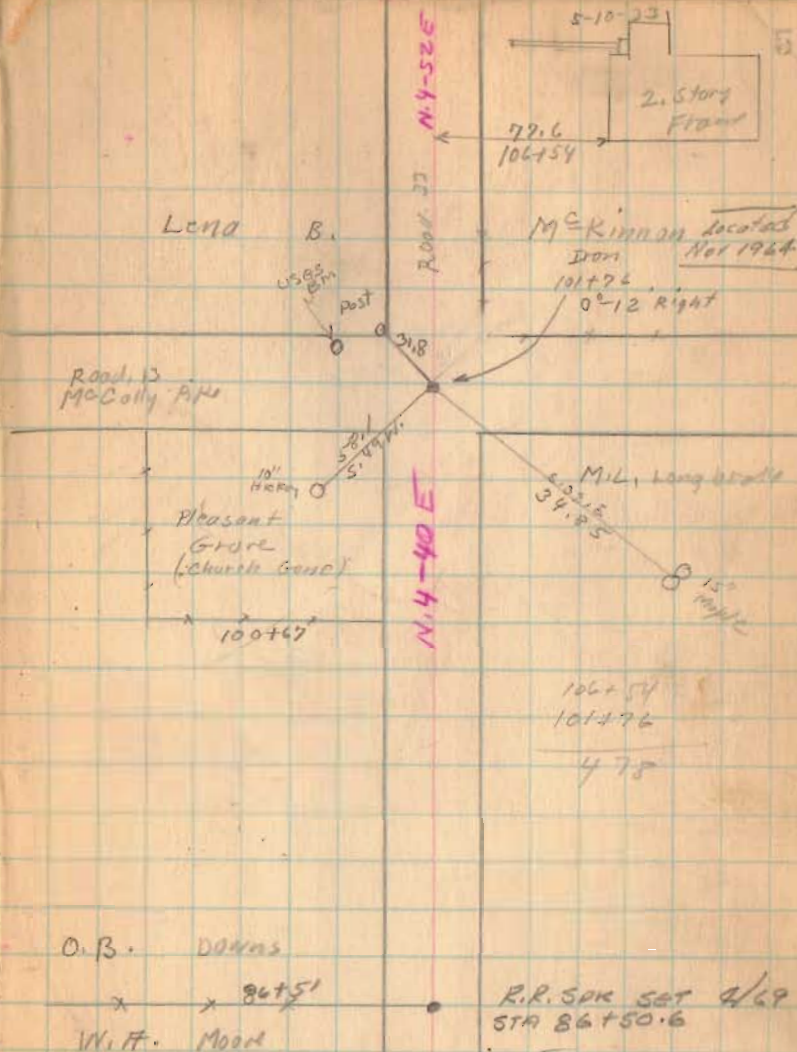
86+51
70-10
12 91

Road 33

77.6

1656

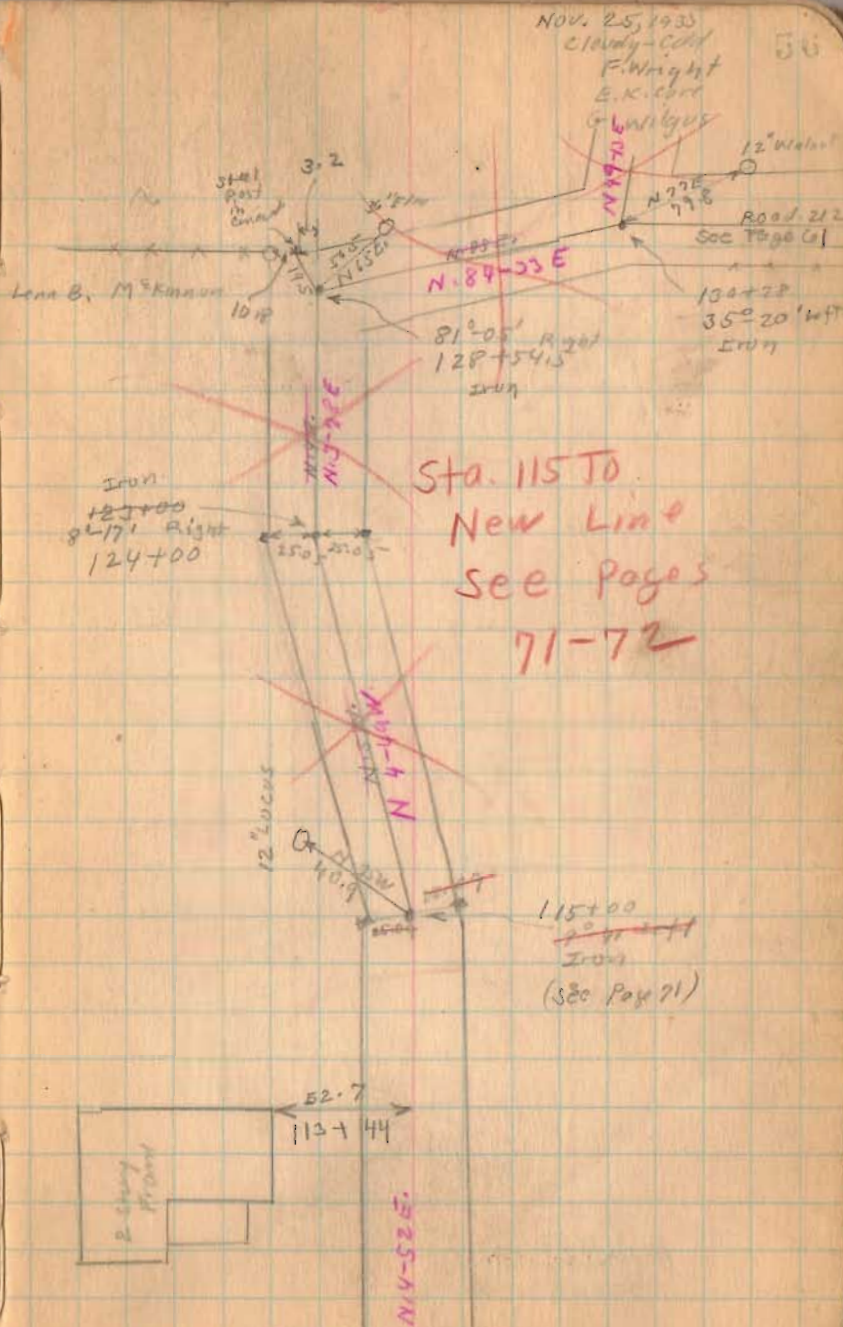
INDEXED ON MAP



Road 33

130428.0
128754.5
1773.5

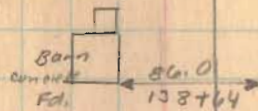
1656
INDEXED ON MAP



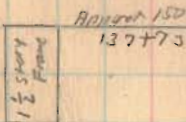
Road 33

11-25-35

57



Drill
138+50.2



N. 0°-04' W

24°-02' N of H
102+45

Iron
25°-15' N of H
131+50

N 23°-58' E

See Pages
71 and 72

48" Cor. Pgs

N 44°-10' E

Rowland

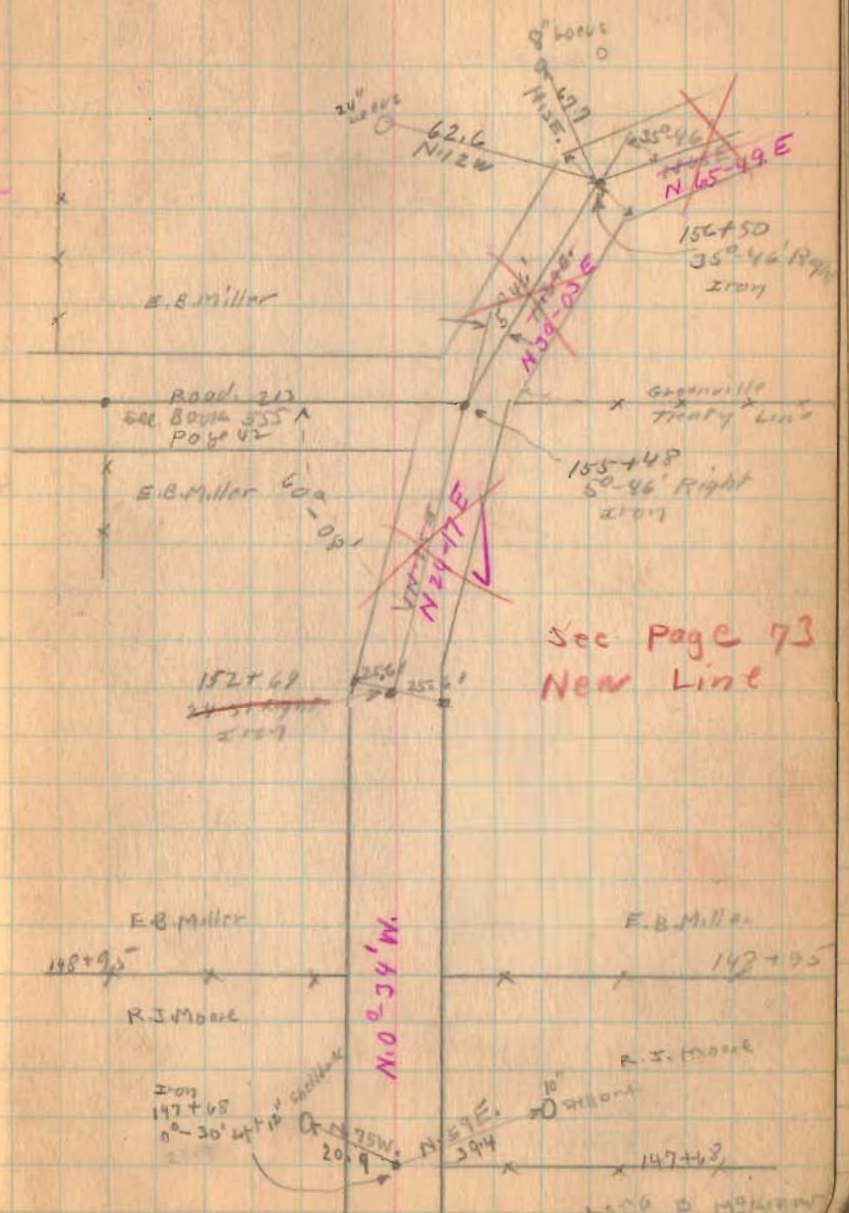
1656

INDEXED ON MAP

Road 33

11-25-35

36



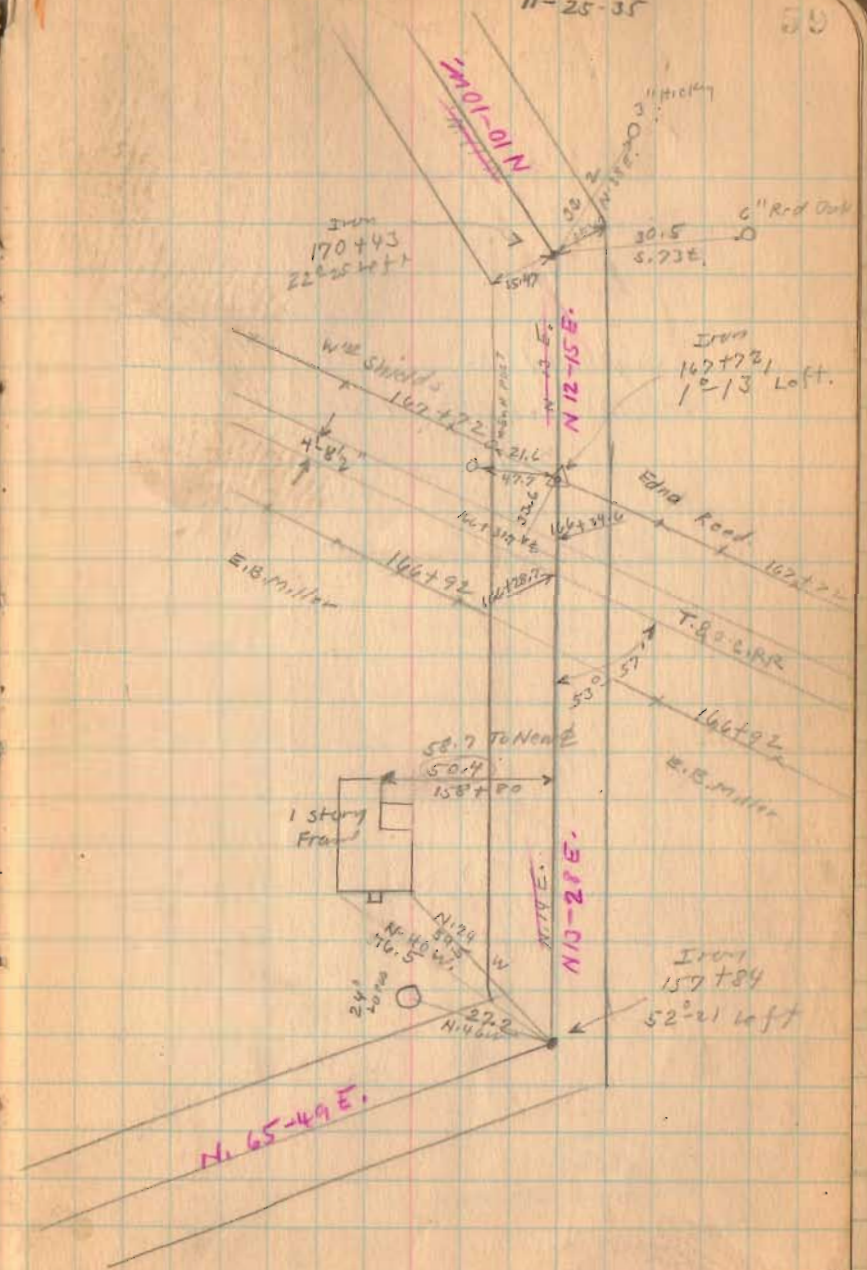
INDEXED ON MAP

Road 33

1656
INDEXED ON MAP

11-25-35

59

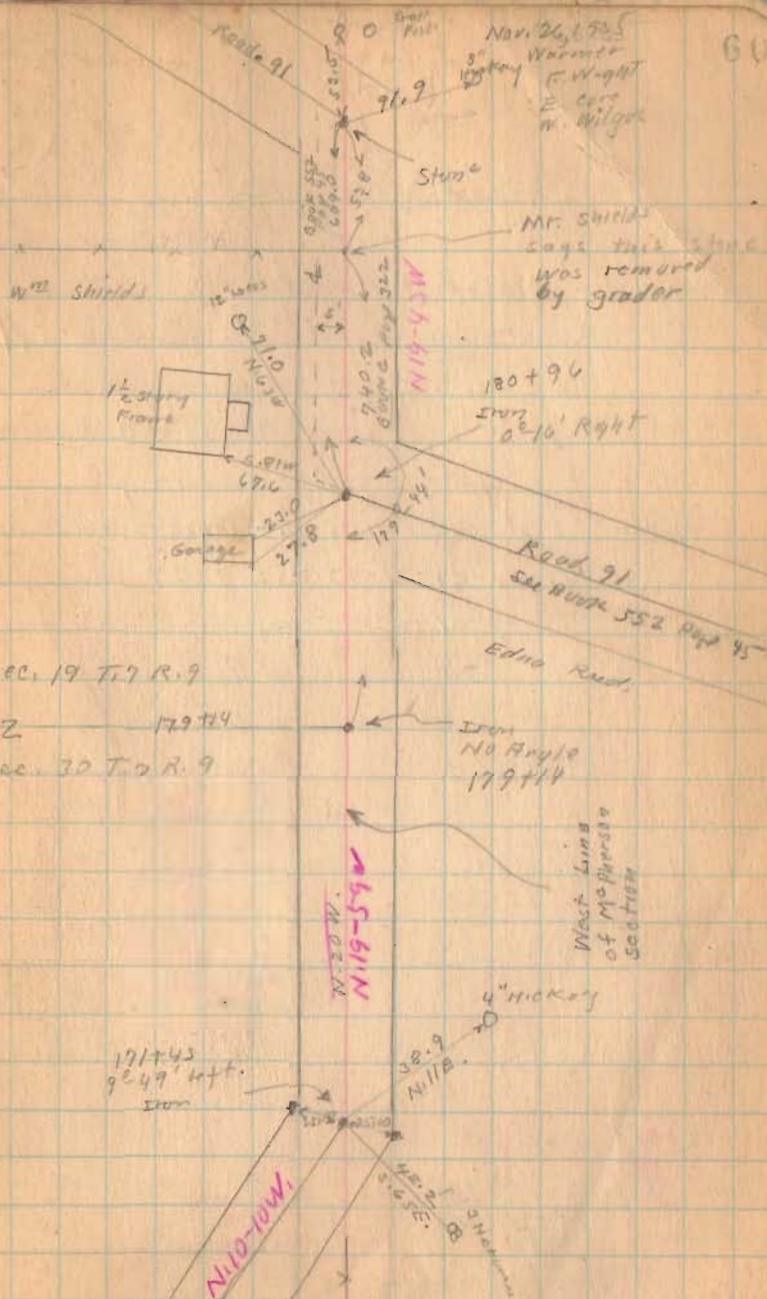


Road 33

Length 18096 Feet.
Length 3.42726 Miles
3.43

see Book C Page 322

1656
INDEXED ON MAP



Road 33

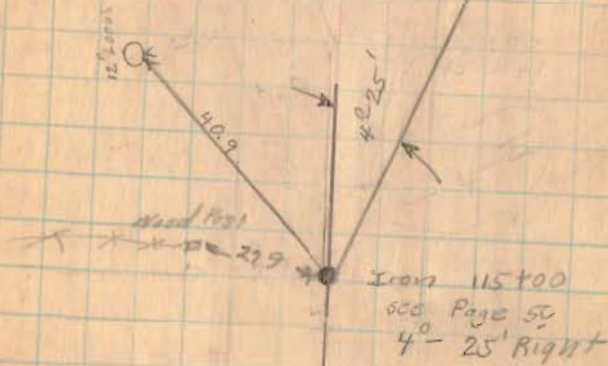
April 22-1905

Coal - Yes

F. Wright

E. Cox

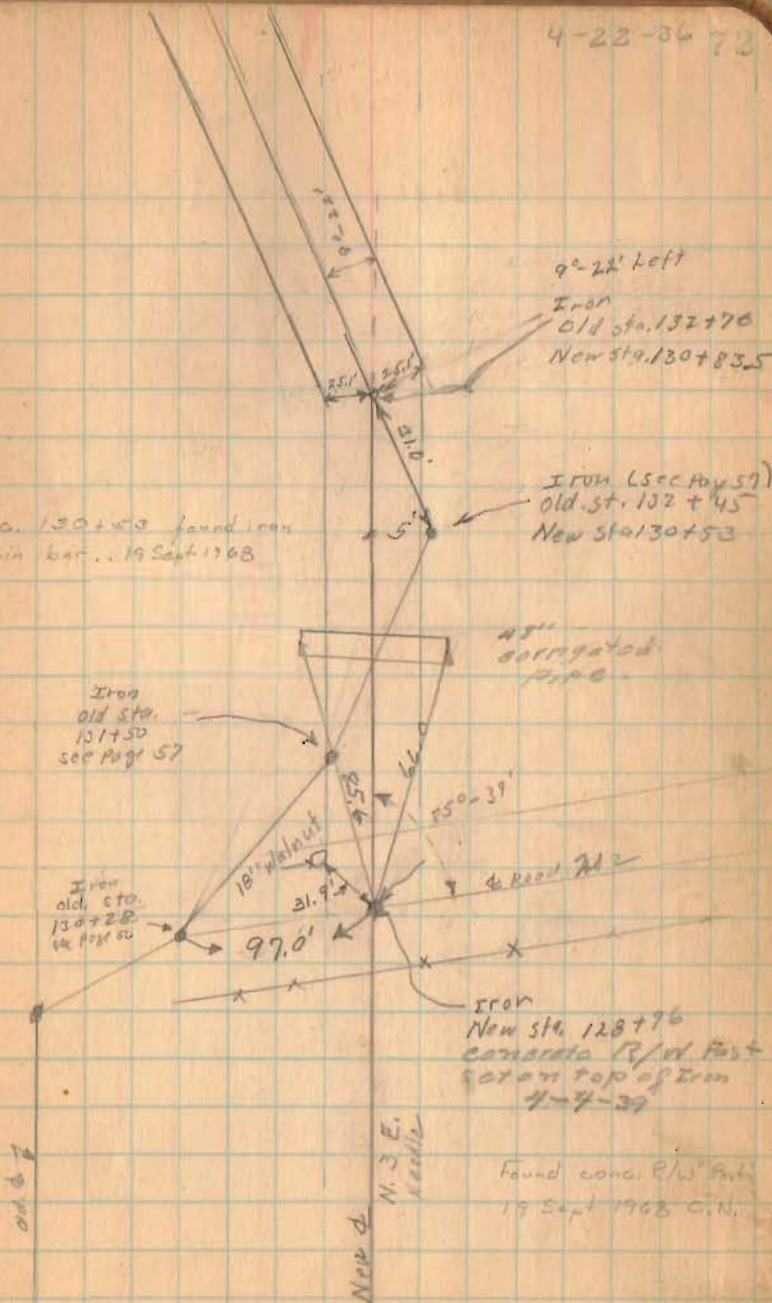
G. Wilgus



Road 33

4-22-36 73

Sta. 130+43 found iron
rein bar... 19 Sept 1968



Road 33

25.56

April-23-1936
Clear-Cool
FWright
E.0012

73

← 25 → 25 P.T.

