

Road. 13

50 & (75') McColly Pike

Free Pike record No 4 Page 152

1875

(75' - sta 48+98 To 51+62)

60' Sta. 444+13 To 483+99 Commissioners

Journal No. 5 Page 183 (1837)

staked for 60' R/W. - 11/7/39

stakes for 50' Road

(13+00) Monuments (Hubs set)

(10+00) Monuments - (Hubs set)

(6+00) Monuments (Hubs set)

(1+50) Monuments Hubs set

Em bankment 13+00 to 15+00

1727

INDEXED ON MAP

Re staked  
11/7/39  
E. Gore  
G. W. Lee  
J. Buckner  
M. V. ...  
R. Reed



July-8-1936  
Clear-Dry-Warm  
F. Wing 17  
J.M.  
T.3 R.14  
J. Loc McCormick

38

Road 32  
See Book 615 Page 68 A  
540-20' W

C.R. Shaffer

sec. 6

Notes: Bearings  
shown in Red  
are established  
True Bearings

store  
12+63.5  
09-14' Left  
N 41-24' E

Road. 32

00-13' Left  
00-26' Left

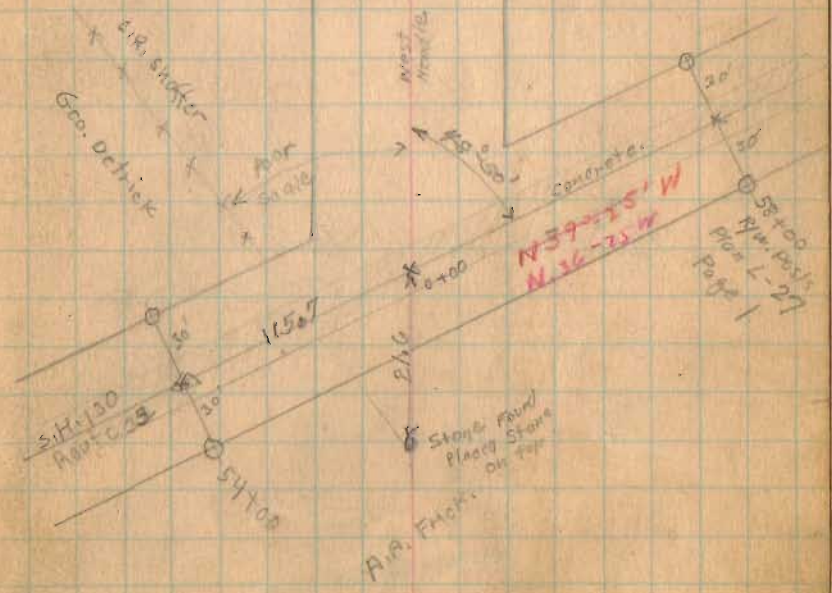
20" PAK

T.3 R.14

Major's Field



Bridge 40+33-16.9



11/7/39  
Restaking

Road 13

(24+00) Monuments (Hubs Set)

(22+00) Monuments - (Hubs Set)

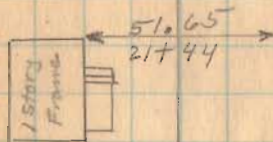
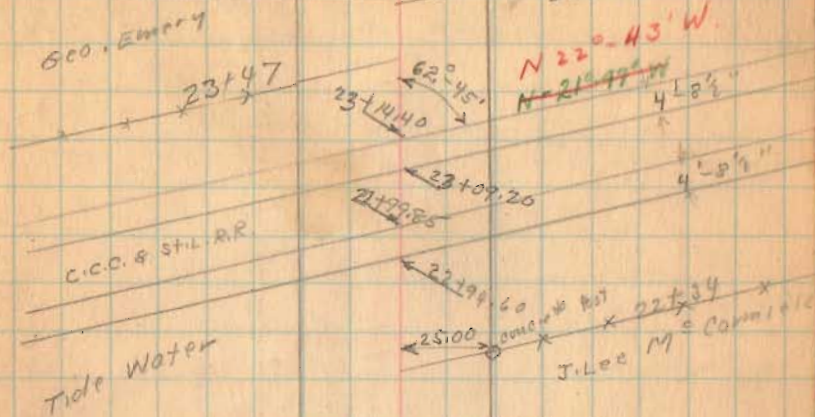
(1727)

(18+00)

INDEXED ON MAP  
Monuments - (Hubs Set)

7-8-36

Harry Costin 39



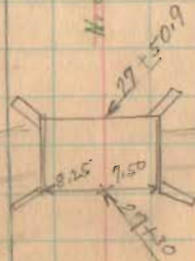
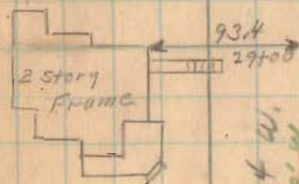
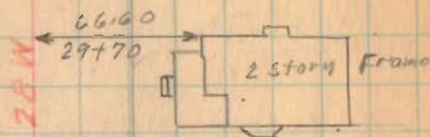
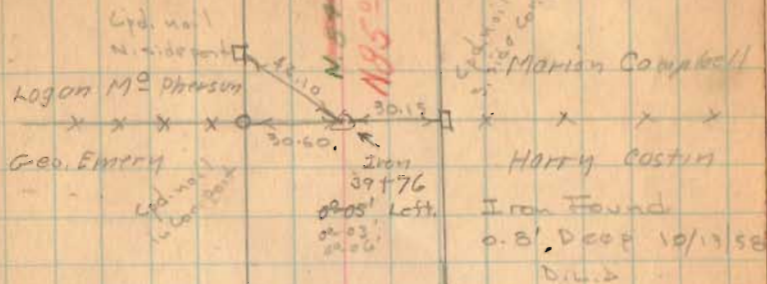
N 65° 18' W

11/7/39  
Restored

Road 13

40

7-8-34



(39+00) Monuments (Hubs set)

(53+00) Monuments (Hubs set)

(28+00) Monuments (Hubs set)

(127)

INDEXED ON MAP

Road 13

11/1/27  
K. L. ...  
G. ...  
J. ...  
M. ...  
R. ...

67+00 Monuments (Hubs set)

66+00 Monuments (Hubs set)

61+00 Monuments (Hubs set)

56+00 Monuments (Hubs set)

51+62 25' To E 37 1/2' To E  
Monuments at 30' from E (Hubs set)  
" 37.5' " " " " " "

48+98 25' To E 37 1/2' To E  
Monuments at 30' from E (Hubs set)  
" 37.5' " " " " " "

46+00 Monuments (Hubs set)

41+00 Monuments (1727) (Hubs set)

INDEXED ON MAP

7-2-56

41

Sec. 18

A. Mar 1-1

Log on MR Pearson

Sec. 12

T. 3 R. 14

James Hill

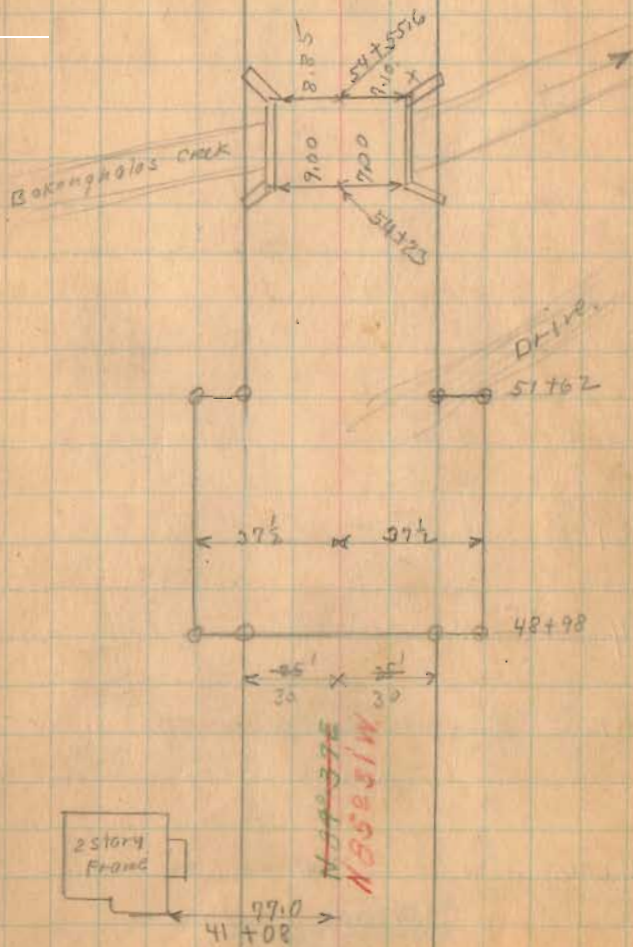
Stone Found - Monitor Campbell

66 + 66

of 34'

Right

T. 3 R. 14



11/8/39 Restaked

E. Cory  
G. Wilkes  
J. Inskeep  
M. Jants  
R. Reed

Road 13

60' wide

95+00 Monuments (Hubs set)

90+00 Monuments (Hubs set)

84+00 Monuments (Hubs set)

78+00 Monuments (Hubs set)

74+00 Monuments (Hubs set)

INDEXED MAP  
INDEXED ON MAP  
(1727)

✓

July-9-1936  
Warm Yes  
Clear 42  
F. Wright  
G. Wilkes  
J. Montgomery

E. Z. Kauffman  
concrete  
post  
A. Mark

N. 99+00 W  
N 84+50 W

Stone Found. Lester Marshall  
93+58  
02+00  
left

100.00  
N 22 E  
92+95  
Brick School

91+54  
J.H. Hill

90+74.0  
R.P. Spike  
No angle

83+42.6  
83+41

Land To Mark Bldgs.  
83+16

N. 83+57 W  
N. 83+57 W

70.00  
82+88  
2 story frame

80+42  
Land To Royal Hill  
80+04

N. 80+00 W  
N. 80+00 W

Road 13

11-9-39 Restaked

B. Wiggins  
C. Kopper  
B. Fiske  
M. Jones  
R. Reed

120+00 Monuments (Hub set)

115+00 Monuments (Hub set)

110+00 Monuments (Hub set)

106+00 Monuments (Hub set)

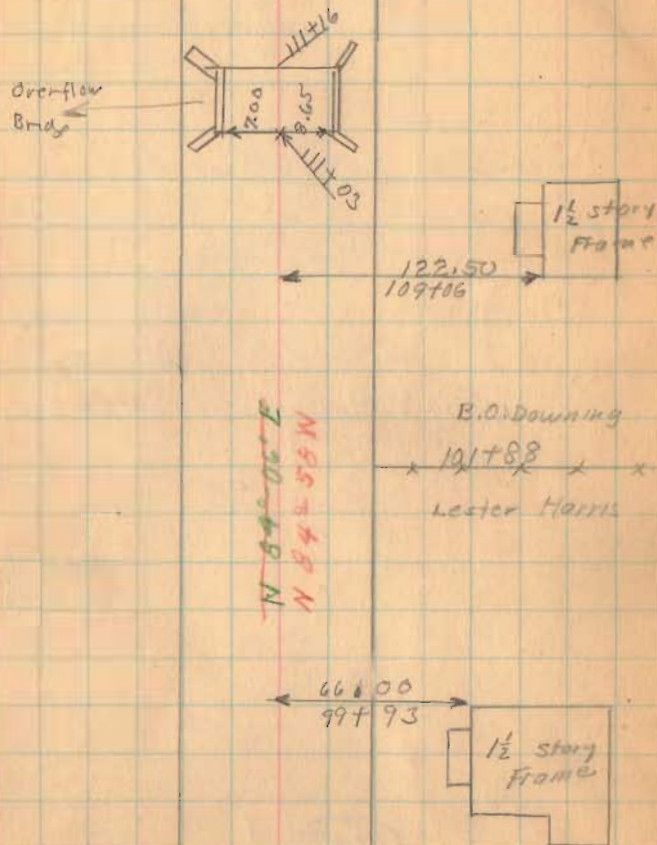
101+00 Monuments (Hub set)

1727

INDEXED ON MAP

7-9-36

43



11-7-39 clear  
not cold

Road 13

131+50 Monuments (Hub set)

126+00 Monuments (Hub set)

121+00 Monuments (Hub set)

1727

INDEXED ON MAP

7-7-36 44

~~S 4°-20' W~~  
S 20° W Road 46  
see Book 587 Page 14

L

sec. 24

T. 3 R. 14

John Lynn  
R  
Huro

Iron  
120+48  
1° 10' 4" off  
15' 27" W

John Lynn

E. Z. Kauffman

Road No. 46

30" Rod  
5600  
28130  
S. 32° W. Id  
Cement  
Post

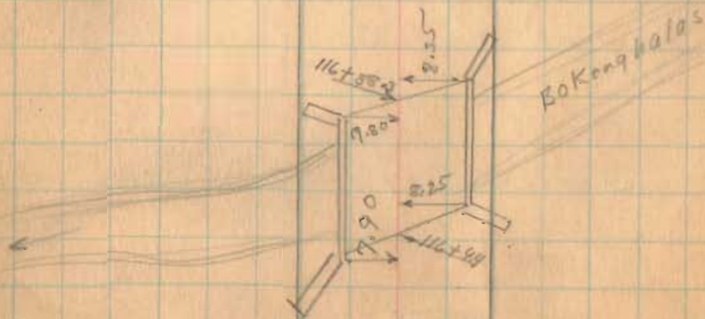
B. O. Downing

sec. 18

T. 3 R. 14

~~N 88°-06' W~~  
N 89° 38' W

→ 2



11-9-39

Wilgus  
Keyser  
Restaked Inskip  
Jones

Road 13

153+00 Monuments (Hubs set)

147+50 Monuments (Hubs set)

149+00 Monuments (Hubs set)

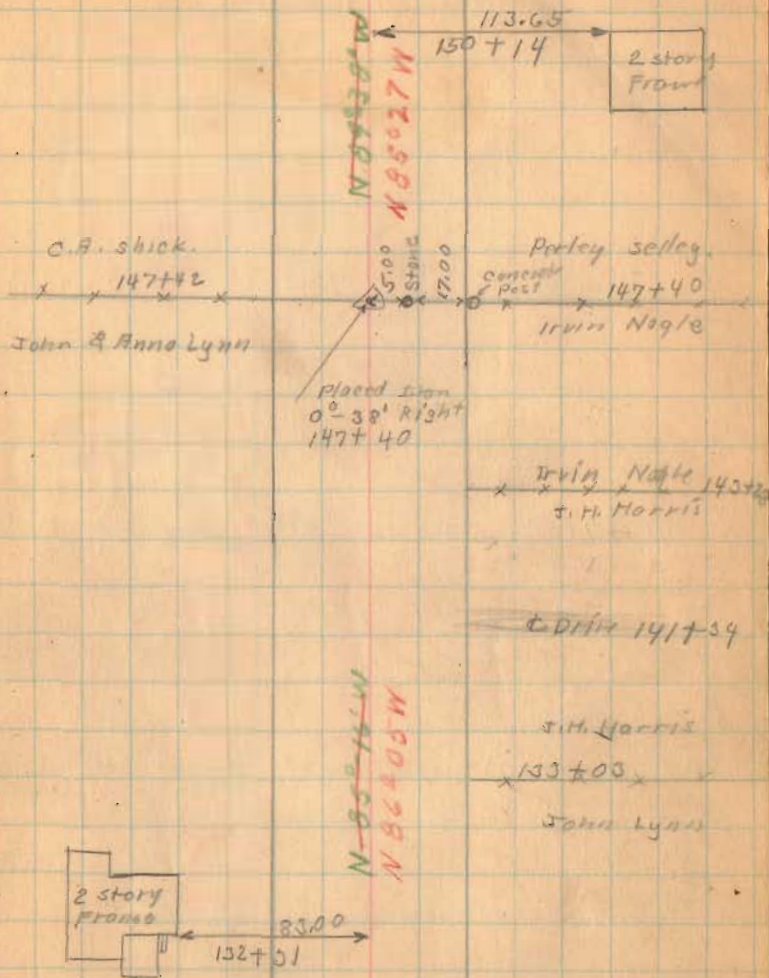
141+00 Monuments (Hubs set)

136+00 Monuments (Hubs set)

INDEXED ON MAP  
1727

7-9-36

45





11-10-39  
very Windy

G.W. Hubs  
C. Keyser  
J. Insteep  
M. Jones

Road 13

7-9-36

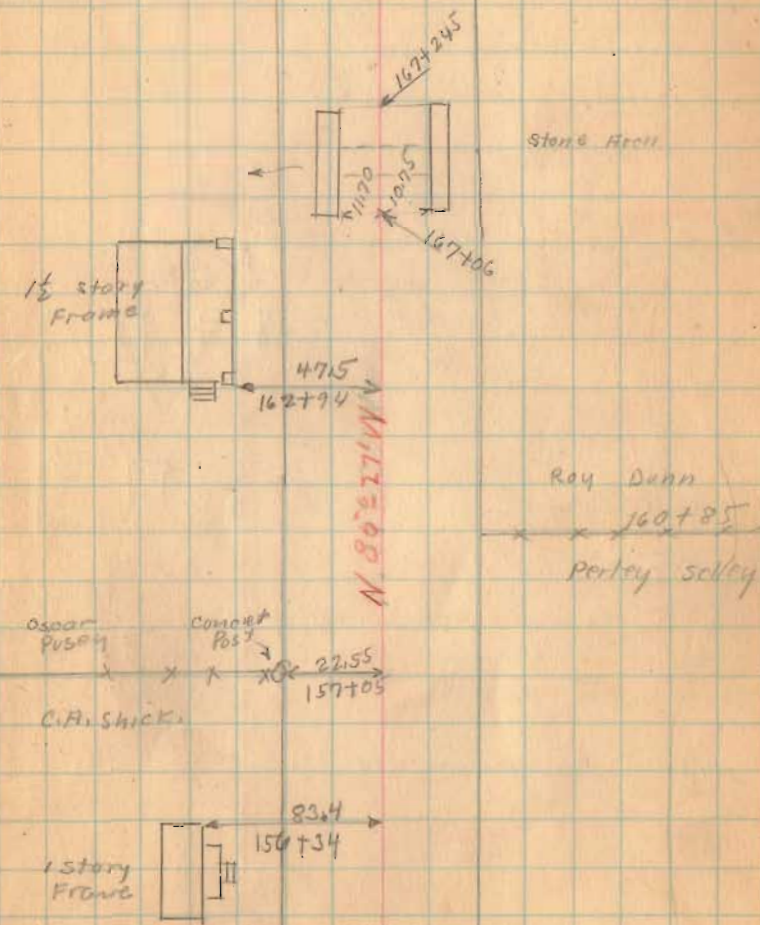
46

(167+00) Monuments (Hubs set)

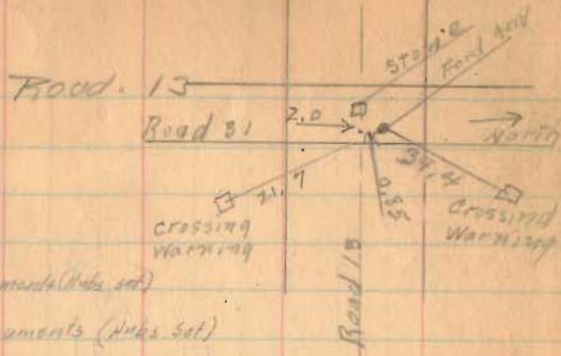
(162+00) Monuments (Hubs set)

(157+00) Monuments (Hubs set)

(1927)  
INDEXED ON MAP

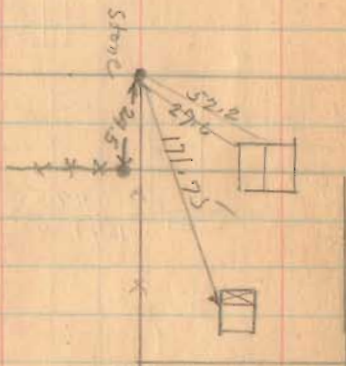


July - 10 - 1936  
 Clark - Mot.  
 F. Wright  
 J. Montgomery  
 G. Wilgus



186+00 Monuments (Hubb set)

180+00 Monuments (Hubb set)



175+00 Monuments (Hubb set)

Monument - N. side road at 90°  
 set by eye.

173+00 Monuments (Hubb set)

Sargent  
 Oscar Pusoy

1727

INDEXED ON MAP

Sec. 30

Robert Bradley

T. 3 R. 14

Mary E. Moore

174+48

Road 31  
 540-19' W

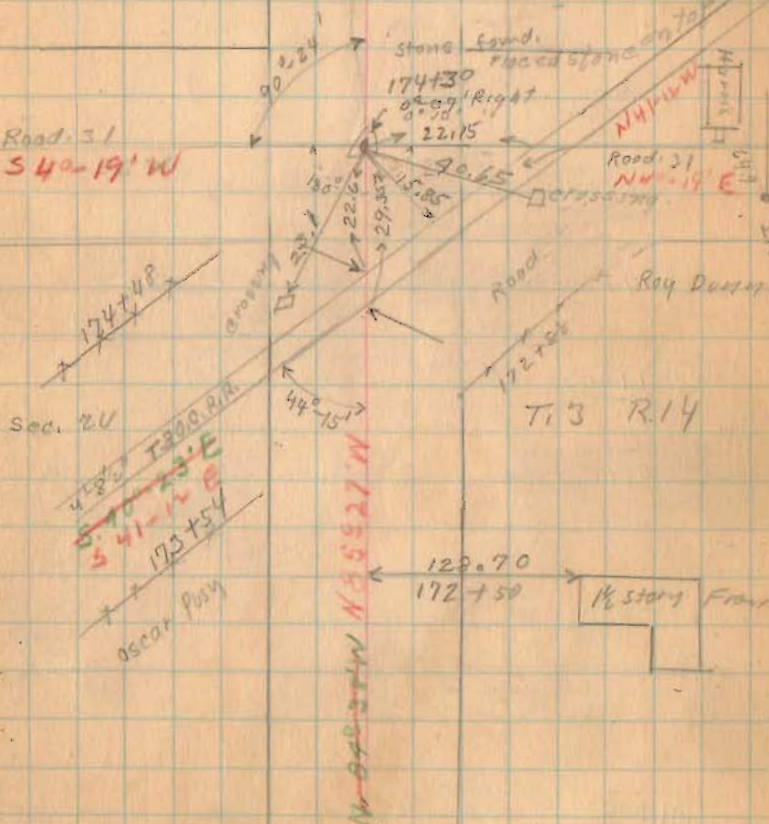
Sec. 20

418.2 T300.0 R.A.  
 5.71-23.1 E  
 341-12.8 E  
 170+54

Oscar Pusoy

N 65 27 W

N 44 27 W N 35 27 W



TR000113

11/14/39  
Rechecked - 60'  
E.K. Cope  
G.W. Wilgus  
H.E. Jones  
C.B. Kesser  
R. Root

214+00 Monuments - (Hubb Set)

209+00 Found 5-9-53 Monuments (Hubb set)

204+00 Found 5-9-53 Monuments (Hubb set)

201+00 Found 5-9-53 Monument - (Hubb Set)

200+00 Monuments - (Hubb Set)

195+00 Monuments (Hubb Set)

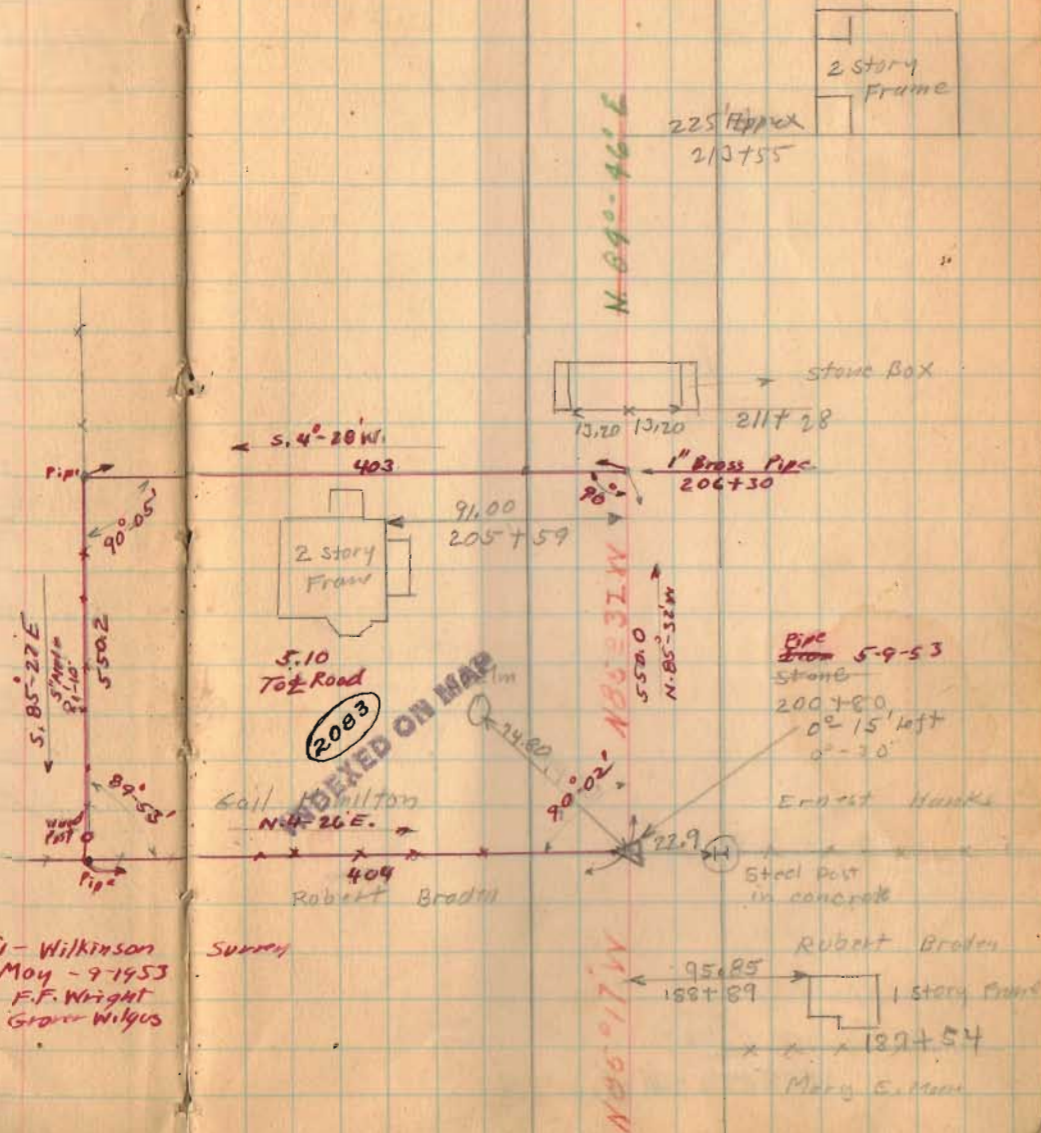
191+00 Monuments (Hubb set)

1727

INDEXED ON MAP

Armi - Wilkinson  
May - 9-1953  
F.F. Wright  
G.W. Wilgus

Surrey



7-10-34

Road 13

(219+00) Monuments (Hubs Set)

(1722)

INDEXED ON MAP

9-10-36

49

✓  
Z x 217+50 x  
Lane  
Z 217+34 x

N 77° 49' W  
~~N 77° 49' W~~  
N 85° 31' W

Lawrence Milligan

Lane

217+67

Ernest Hanks

11/14/39  
 Restaked 60'  
 Cox  
 Wilgus  
 Keyser  
 Jones  
 Reed.

Road. 13

246+00 Monuments (Hubs Set)

241+50 Monuments (Hubs Set)

240+75 Monuments (Hubs Set)

237+00 Monuments (Hubs Set)

233+00 Monuments (Hubs Set)

228+00 Monuments (Hubs Set)

227+00 Monuments (Hubs Set)

224+00 Monuments (Hubs Set)

1927

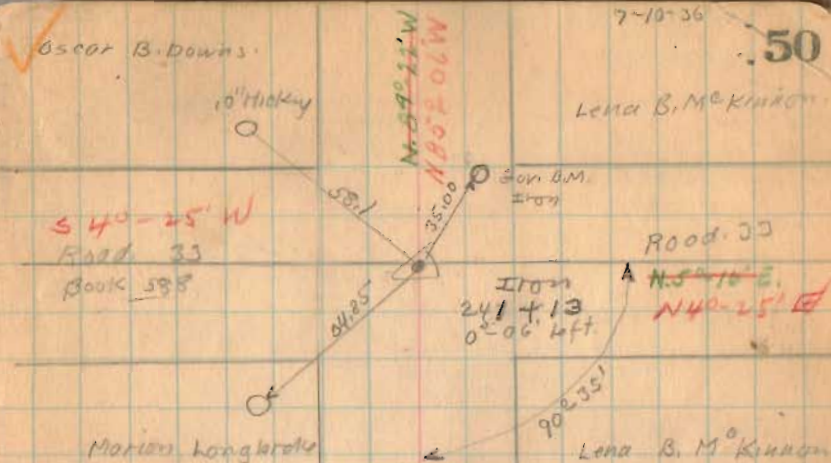
INDEXED ON MAP

✓ Oscar B. Downs.

7-10-36

50

Lena B. McKinnon



Washington  
 sec. 30

Township 2  
 T. 3 R. 14

Marion Longbrake

Iron 227+60  
 0°-32' Right Lena B. McKinnon

x x x  
 Gail Hamilton  
 sec. 30

28.00  
 N 55°  
 56" Elm  
 Lawrence Milligan  
 T. 3 R. 14

Harrison

Township

N 85° 20' W  
 N 85° 16' W  
 N 85° 32' W

Food. 13

269+00 Monuments (Hubs Set)

265+00 Monuments (Hubs Set)

260+00 Monuments (Hubs Set)

255+00 Monuments (Hubs set)

250+00 Monuments (Hubs Set)

INDEXED ON MAP

INDEX (1727) MAP

INDEXED ON MAP

✓ Everett Knowlton

268+30

Kreglow

7-10-36

E. B. Roedel

51

268+30

268+20 of Drive



Storage Box

263+00

Noah H. Coover

262+12

Leola B.M. Kinross



52.25  
258+77

N 85° 26' W  
N 85° 26' W

placed Iron

254+65

0°-20' to ft.

Kreglow.  
Oscar B. Downs

Corner  
Post

19.45

43.50 30" dia  
N. 12 E.

44.90 24" dia  
N. 40 E.



57.25  
246+71

N 85° 26' W  
N 85° 26' W

Road 13

11/15/39  
Resfaked - 60'  
Care  
Wilbur  
Keyser  
Jones  
Reed

292+00 Monuments (Hubs Set)

289+00 Monuments (Hubs Set)

281+50 Monuments (Hubs Set)

278+00 Monuments (Hubs Set)

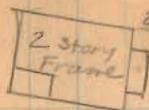
273+00 Monuments (Hubs Set)

1927

INDEXED ON MAP

7-10-36

52



292+34

N 88° 58' 00" N

← established bearing

Supt. Books  
x x 289+79 x  
Errett Knowlton

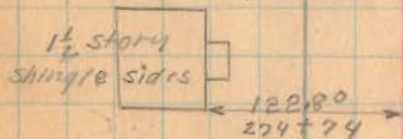
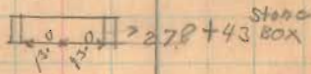
281+79  
Ploand Iron  
92-02' Lift

123.8

Starley Allen

20'  
Road 2.14  
20'  
N 4° 34' E

E.B. Rood



N 92° 55' N  
N 85° 26' W

272+79 D174

Road. 13

311+00 Monuments (Hubs Set)

308+00 Monuments (Hubs Set)

302+00 Monuments (Hubs Set)

296+00 Monuments (Hubs Set)

1727

INDEXED ON MAP

7-10-36

.53

Lawrence Milligan

Supt. Banks

Stone found.  
308+38.5  
No Angle

Mary C. Coover

E. & H.C. Shultz



92.00

306+96

2 story  
Frame

N 85° 28' W

E. & H.C. Shultz

295+50

Starlay Alley



Road 13

330+00 Monuments (Hubs Set)

325+00 Monuments (Hubs Set)

321+00 Monuments (Hubs Set)

316+00 Monuments (Hubs Set)

1727

INDEXED ON MAP

July-13-1936

Clear - 106°

F. Wright

J. Montgomery

G. Wilgus

Joe Roberts

Max James

54

~~Dist 327+29~~



Lou Morgan  
321+91

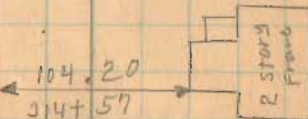
Lane

Emma S. Wilgus

Moz + 08 N

Emma S. Wilgus  
316+55

Mary C. Coover



11/15/39  
Restated .60'

Road 13

346+90

344+00 Monuments (Hubs Set)

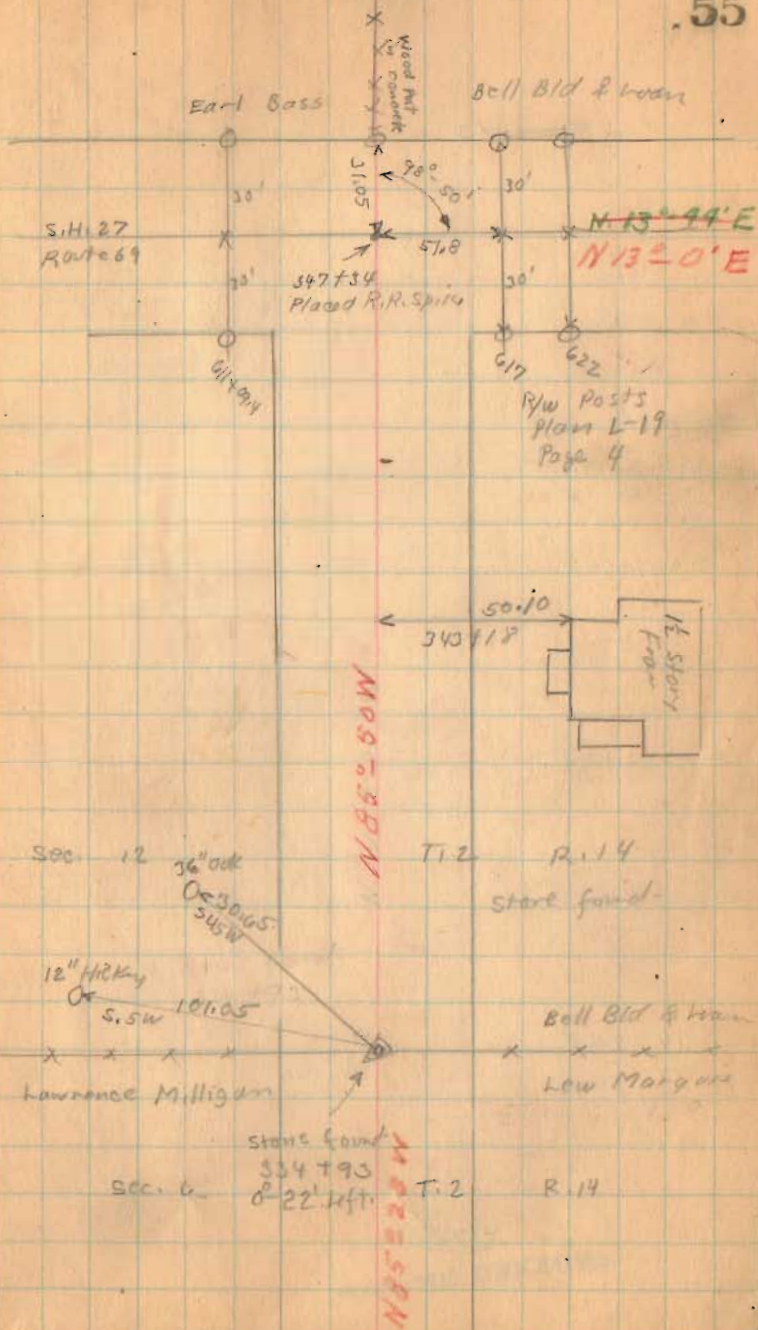
339+00 Monuments (Hubs set)

335+00 Monuments (Hubs Set)

INDEX 1722 MAP

7-15-34

55



Road 13

372+00

367+00

362+00

358+00

354+00

348+00

1727

INDEXED ON MAP

9-13-36

56

Milt McKinnon

x 360+93  
Bell Bid & Loan

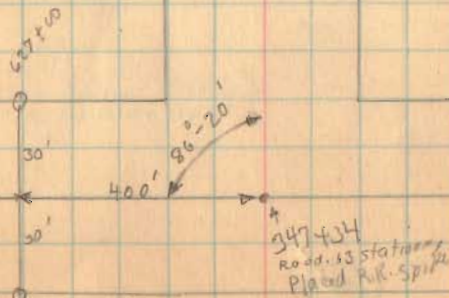
Milt McKinnon

x x x x  
Bell Bid & Loan

12" Hickory 63.4  
O ← 353+57  
S.W. → H+6  
No  
Angle

Bell Bid & Loan

Bell Bid & Loan



Road 13

7-13-34

57

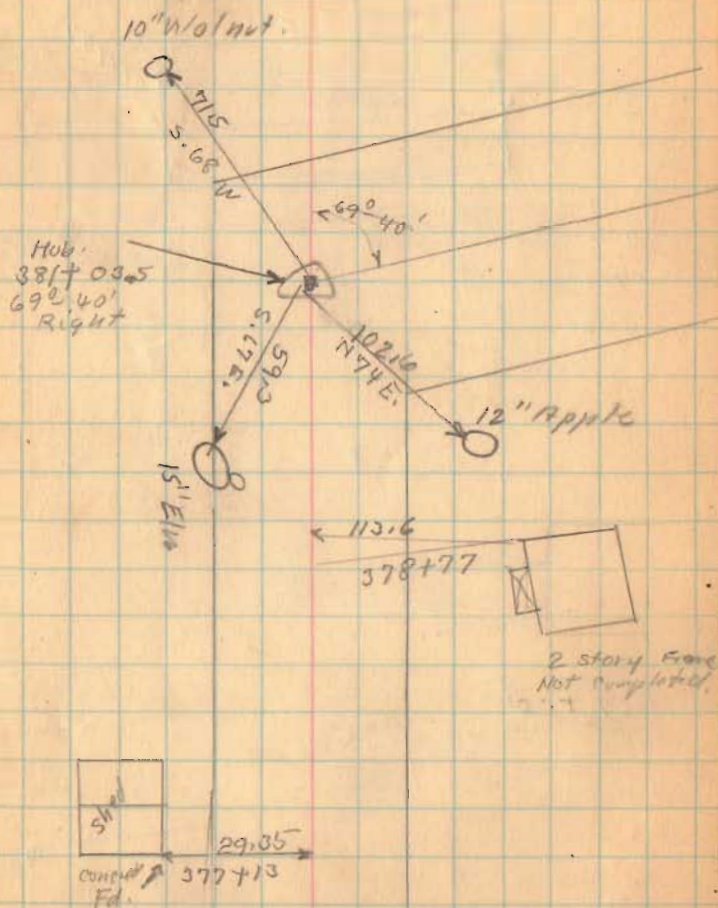
382+00

380+00

377+00

1727

INDEXED ON MAP



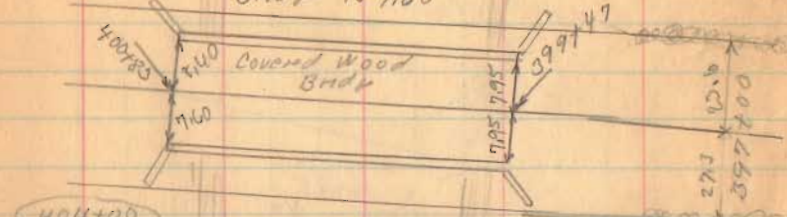
T.W. McKinno

Road 13

W.D. Rogers

Bridge 13-160

Covered Wood Bridge



- 404+00
- 399+00
- 392+00
- 390+00

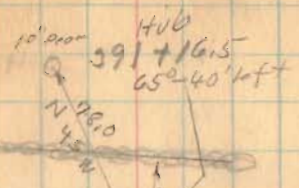
T.W. McKinno

W.D. Rogers

387+00

1722

INDEXED ON MAP



Corner Black

1/2 STORY FRONT

100.10  
5.87E

47.65  
5.72E

6" sugar

Milton McKinno

386+29.5  
Placed Iron  
No Angle

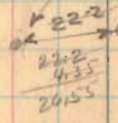
W.D. Rogers

Road 247

Milton McKinno

W.D. Rogers

Milton McKinno



Old Post

Survey to Road 13



Road. 13

410+63.5

409+80 Right only

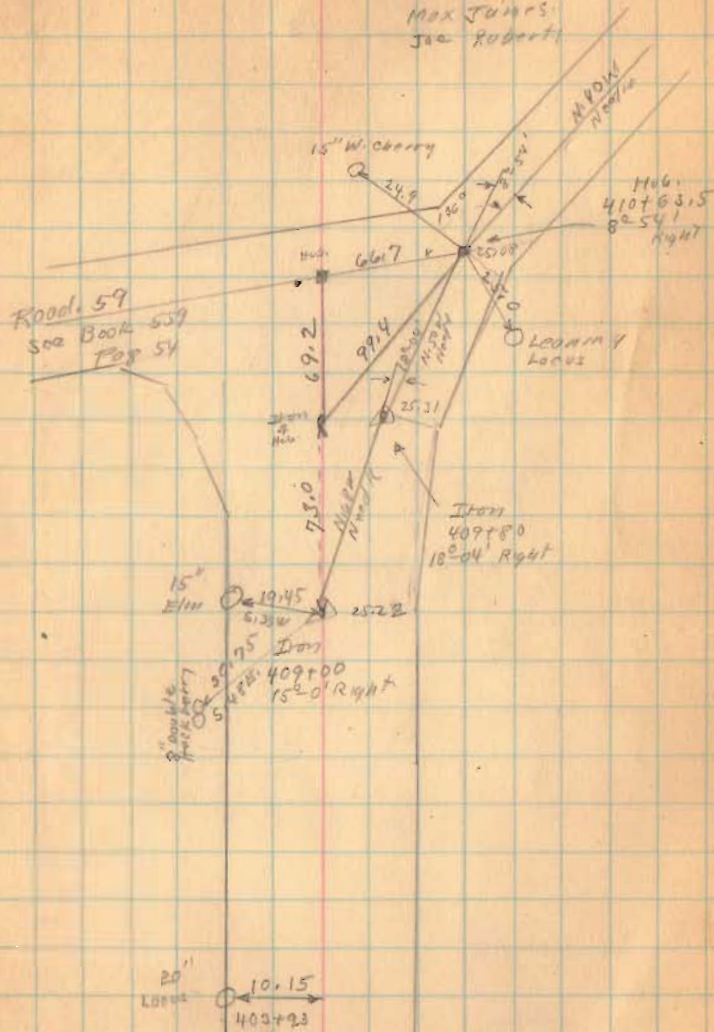
409+00

(1727)

INDEXED ON MAP

July 15 - 1932  
Clear - 25°  
F. W. Wright  
G. Wilgus  
J. Montgomery  
Max Jumps  
Joe Roberts

59



Road, 13

420+50

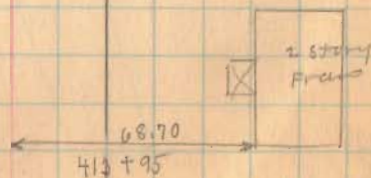
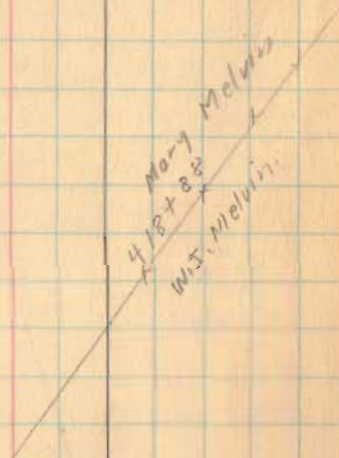
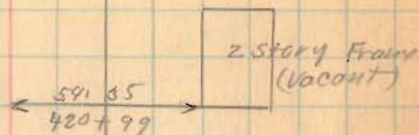
415+00

1727

INDEXED ON MAP

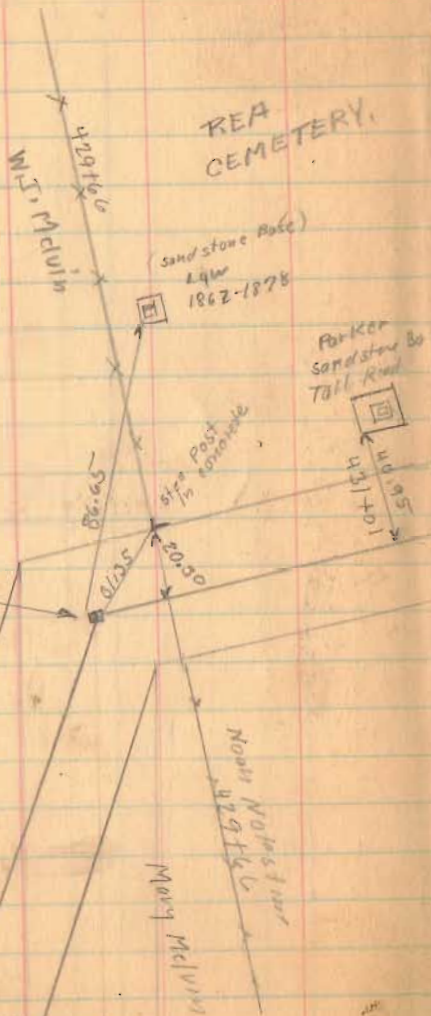
2-15-36

60



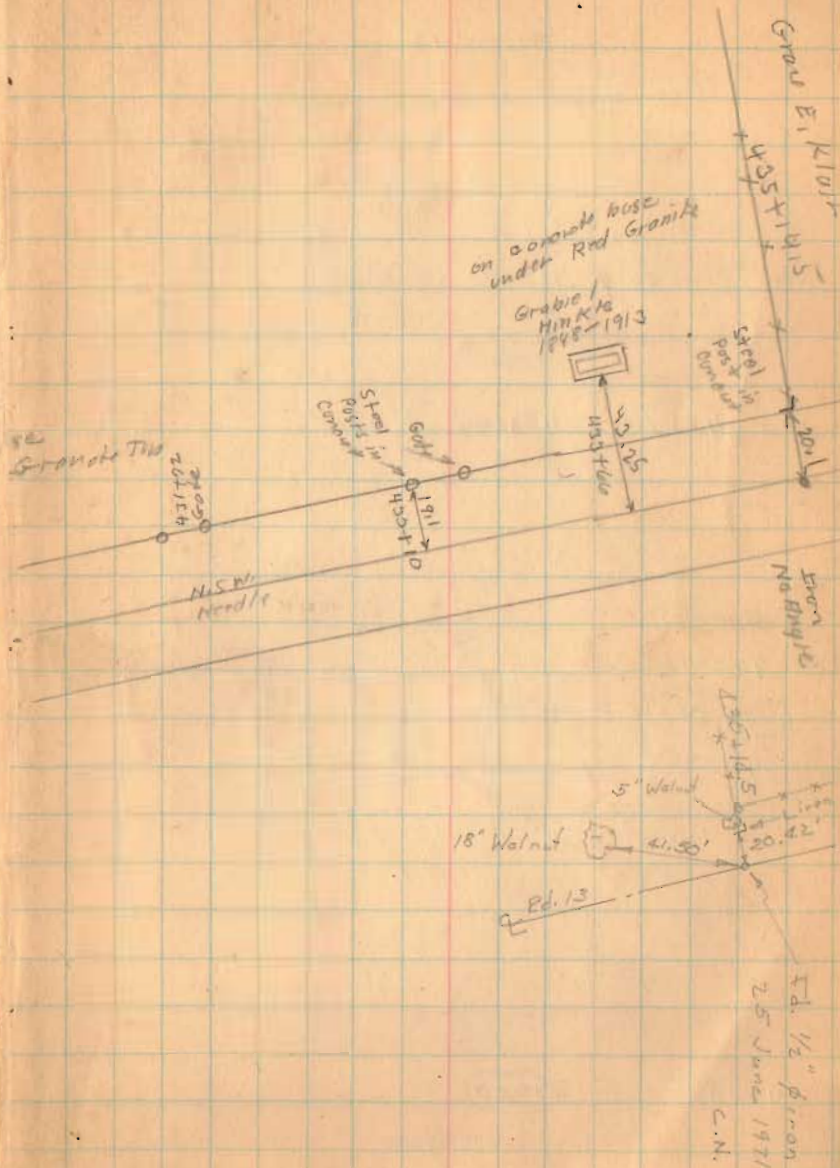
Road. 13

REA  
CEMETERY.



9-15-36

61



INDEXED ON MAP



Road 13

sta. 0+00 To 444+13 = 50' Road.

sta. 444+13 To 483+99 60' Road.

450+00

446+00

444+13

441+00

Right only

Rea  
Cemetery

Good E. Wall

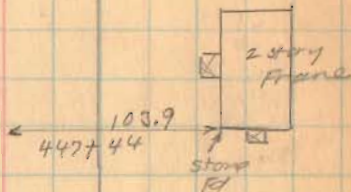
X  
X  
X

1727

INDEXED ON MAP

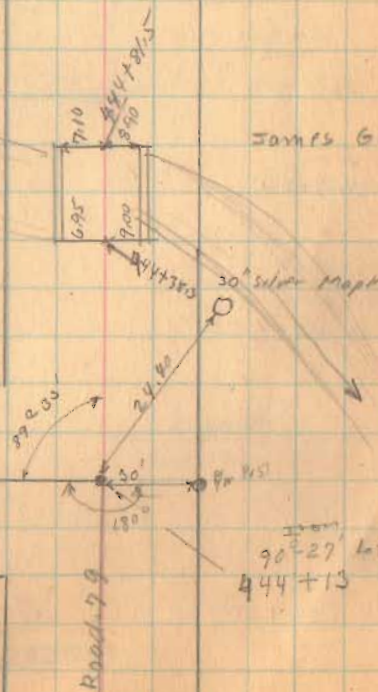
7-15-36

.62



Brandwine Creek.

James G. Ellis



North  
North

Road 13



469+00

461+00

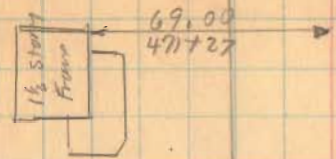
456+80

1727

INDEXED ON MAP

7-15-36

63



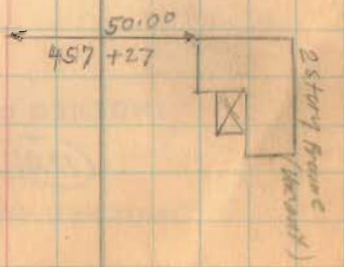
The Shelby Bid of Lot  
Gross E. Klair

460+91  
Iron  
0'-04" left

W.E. & G.H. Aikin

Z - Section 1/2

457+52  
Found Not shown  
James O. Ellis



Road 13

Length 48399 Feet

Length 9.1665 Miles

9.17

483+50

473+00

INDEXED ON MAP

1727

INDEXED ON MAP

7-15-36

64

