

Oct. 15-1936
Fine Day
F. Wright
G. Pusoy



Road 253

Orchard Island Road North

Russells Point
Sec. 36 T. 6 S R. 18 E

Buildings not measured for size or location. Approx location to show references to corners as found.

This survey was made to correctly establish # of Orchard Island Road North.

Measured on N. side of lots 18 & 3

$95 + 10 + 85 + 35$

Measured on N. side of lots 20 & 5

$90 + 10 + 85 + 35$

Measured on N. side of lot 10

$10 + 85 + 35$

set Point at A (Page 16)

The four points O.K. for line

set. Hubs as shown on Page 14

Produced line to C. (Page 18)

see survey (240) Book D - Page 84

see survey (143) Book 390 Page 47

see survey (1653) Book 590 Page 77

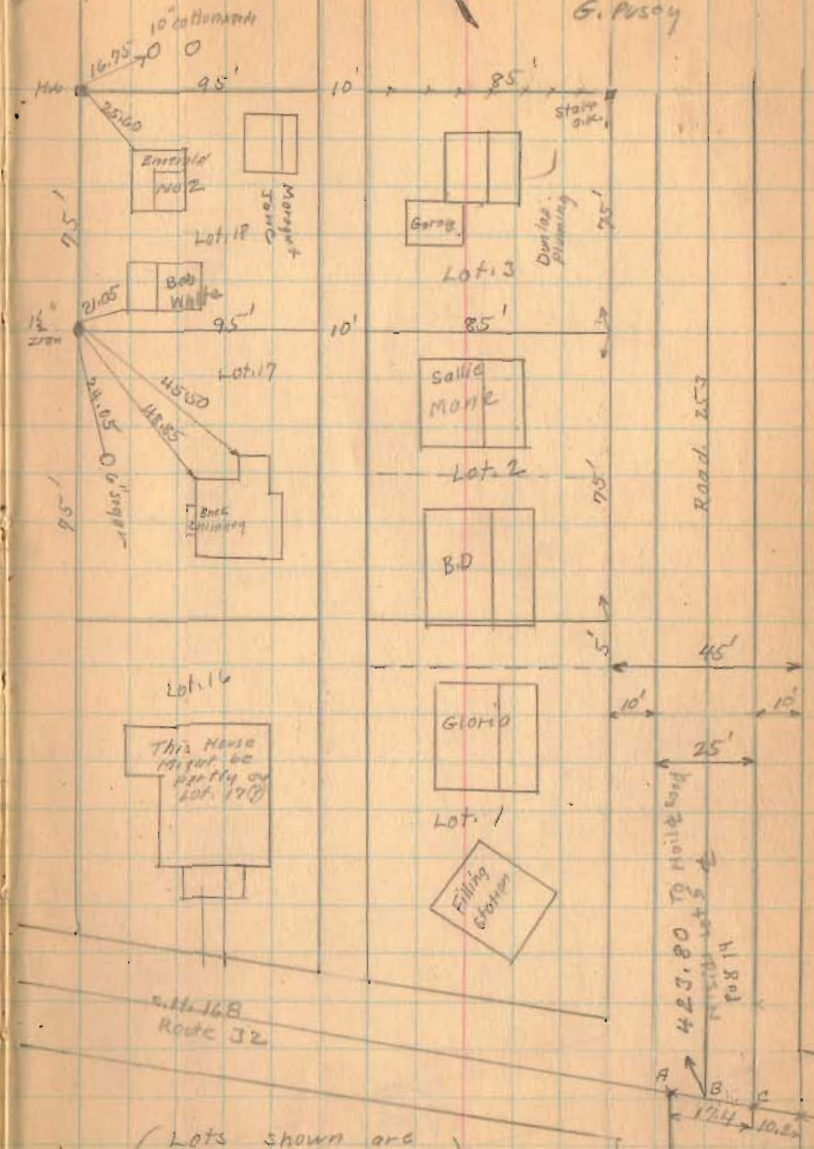
see survey (1746) Book 597 Page 65

see survey (1438) Drawn R.

Original Orchard Island road North = 25'
Later made 45' Road as shown.

see sewer Book 15
Pages 26-27 - 40-45-46

BURKHART AVE.



(Lots shown are in Park Heights)

1755

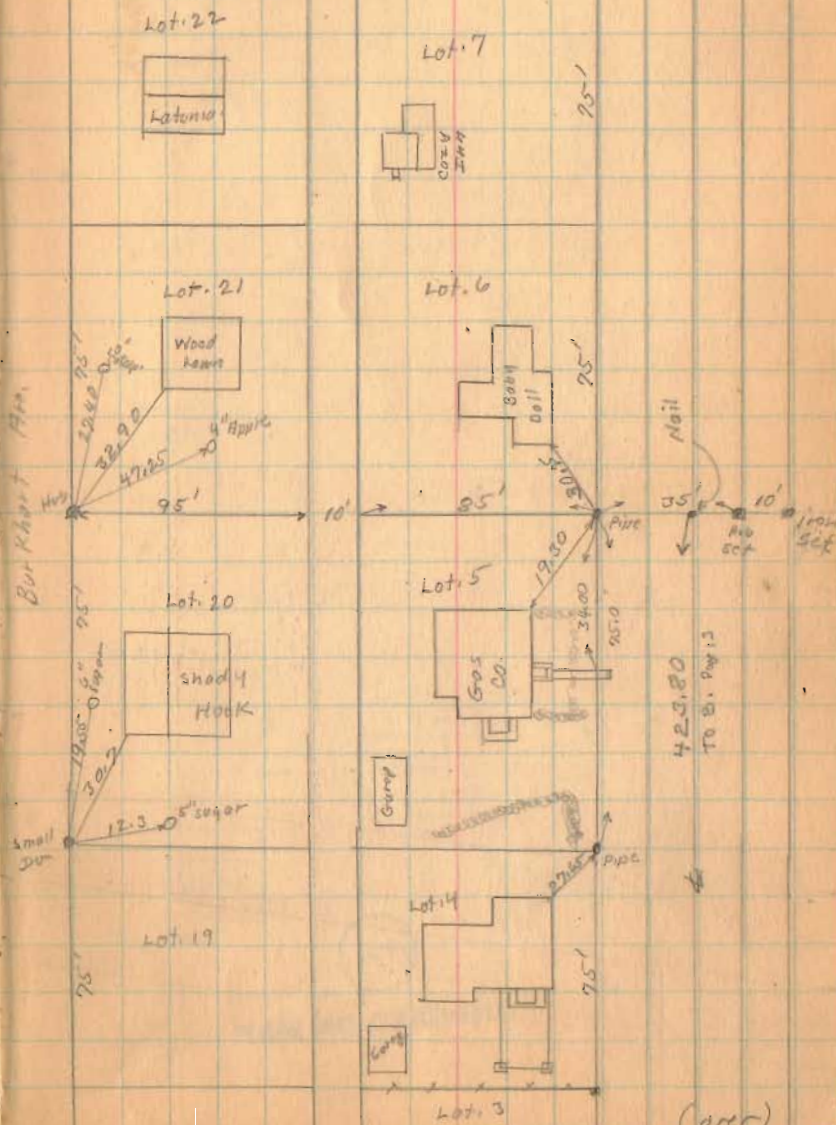
INDEXED ON MAP

(over)

Road 253

10-15-36

14



1755

INDEXED ON MAP

(over)

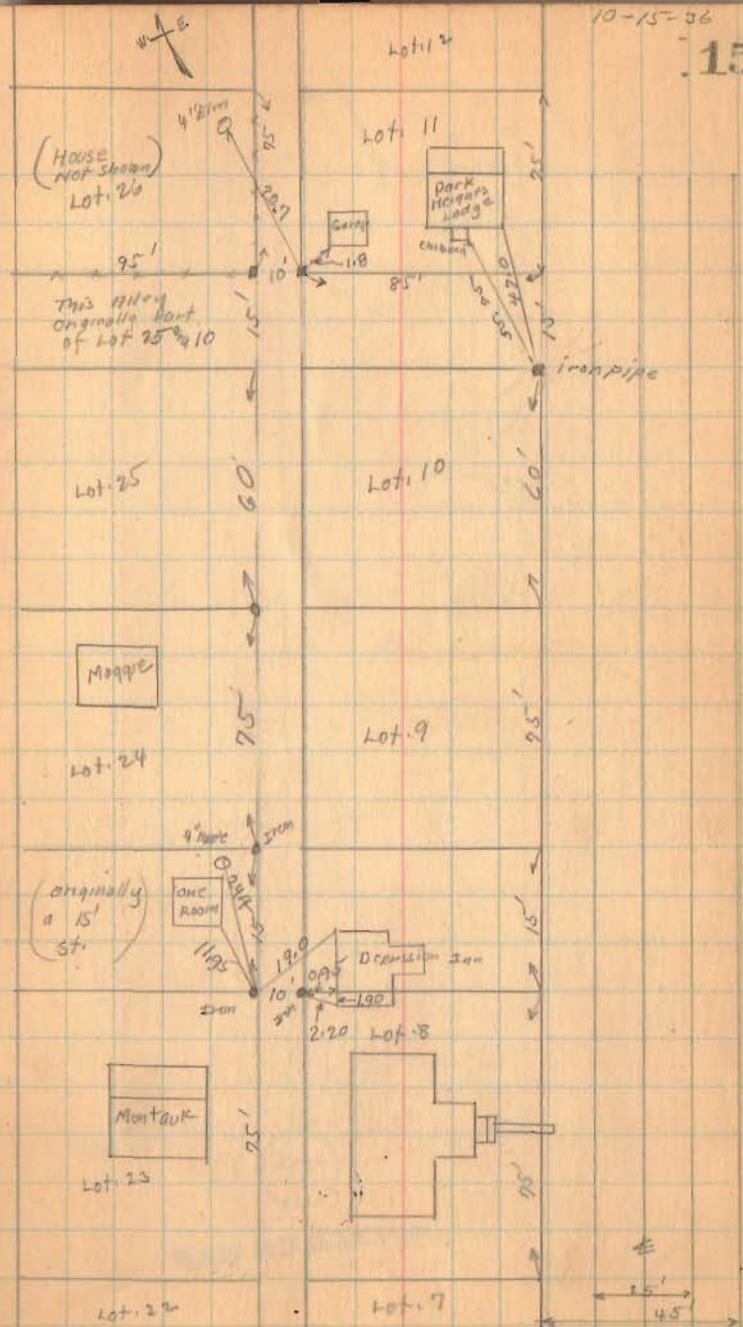
Road 253

1955

INDEXED ON MAP

10-15-36

15

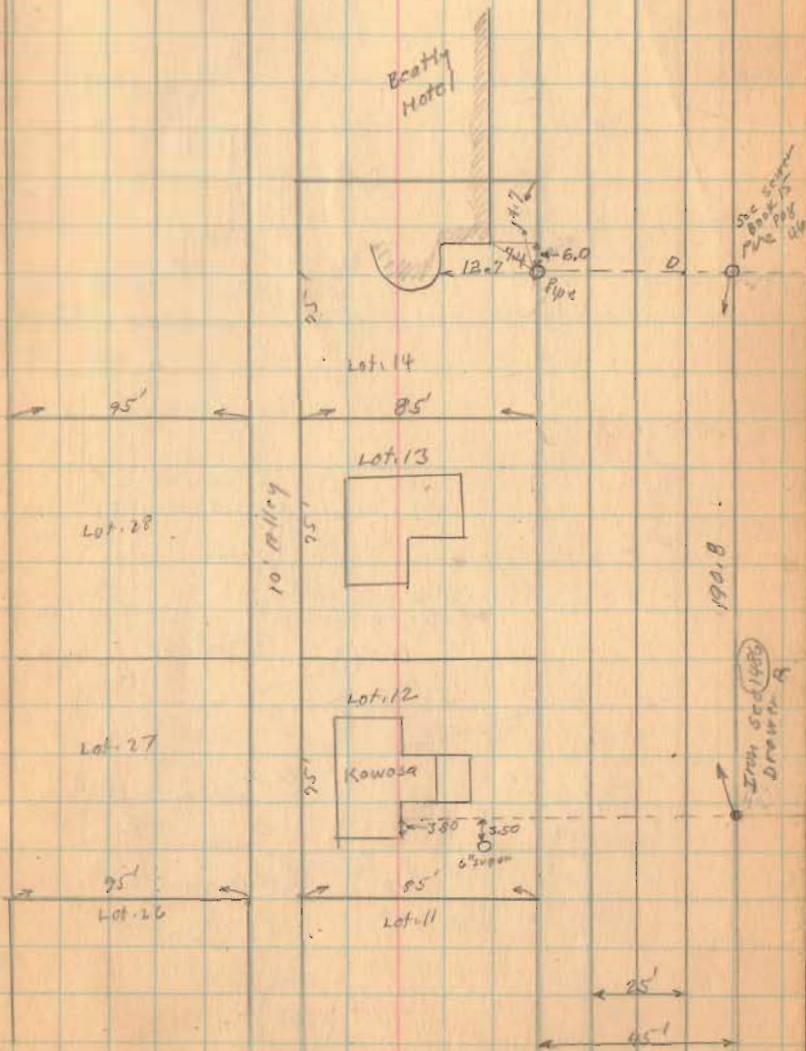


(over)

Road 253

10-73-32

16



1955

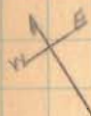
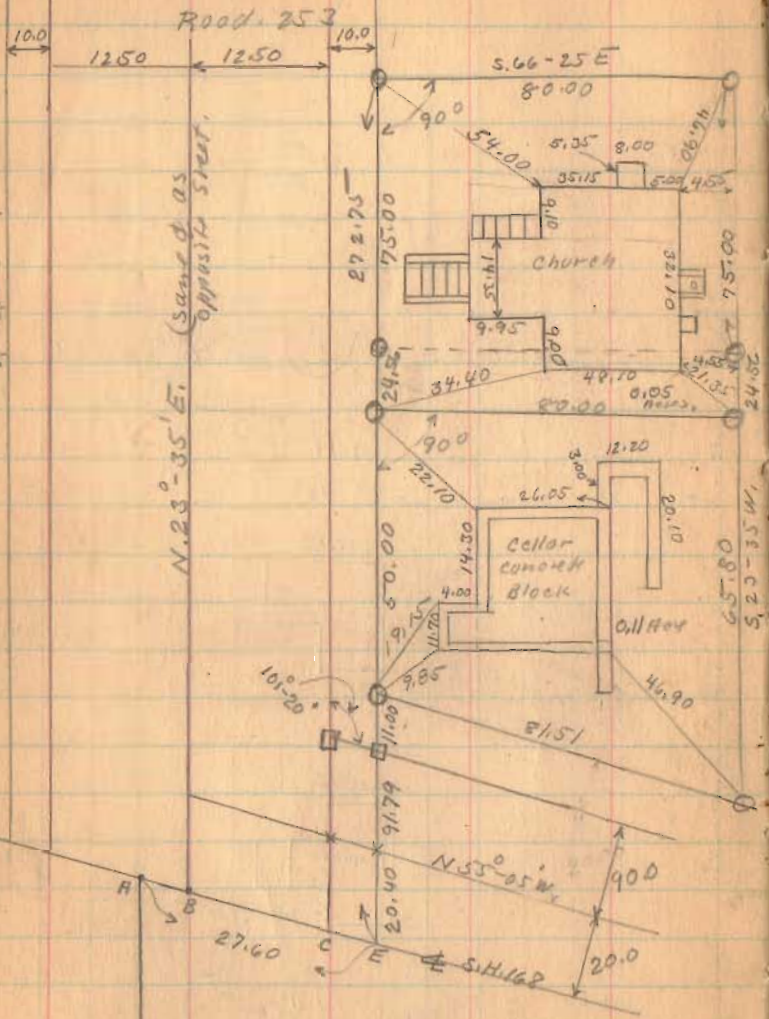
INDEXED ON MAP

(over)

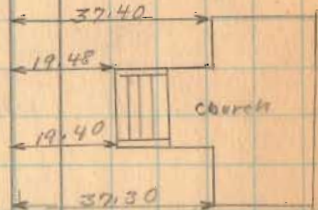
Dec. 14-1936
Clear-Fine Day
F. Wright
G. Wilgus
E.K. Campbell
Mc Trumpa

□ = 2"x6"x24" Hubs
○ = 2" Pipe

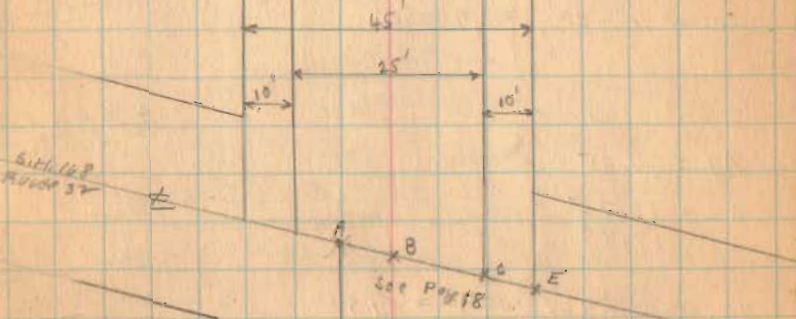
20.40
91.79
11.00
123.19
50.00
173.19
24.56
197.75
95.00
292.75



N 23°-35' E (same as opposite stat)



S.H. 162
Road 37



1755

INDEXED ON MAP

(over)

