

JUNE-12-1937

Nite Day

F. Wright  
W.R. Wright

39

Lot 235  
Orchard Island.

Edward Cisco

1958 Broadway Springfield.

Phone { Main 184  
Main 3275

See Print J-46

see sorry (169)

A - Found stake (See Page 34)

B - Found Iron Pipe

C - Found old Hub (Rotten)

Placed 2" x 2" x 24" Hub.

D - Found old Hub (Rotten)

Placed 1" Iron Approx 30" long

E - Found old Hub (Rotten)

Placed 1" Iron (Approx 30" long)

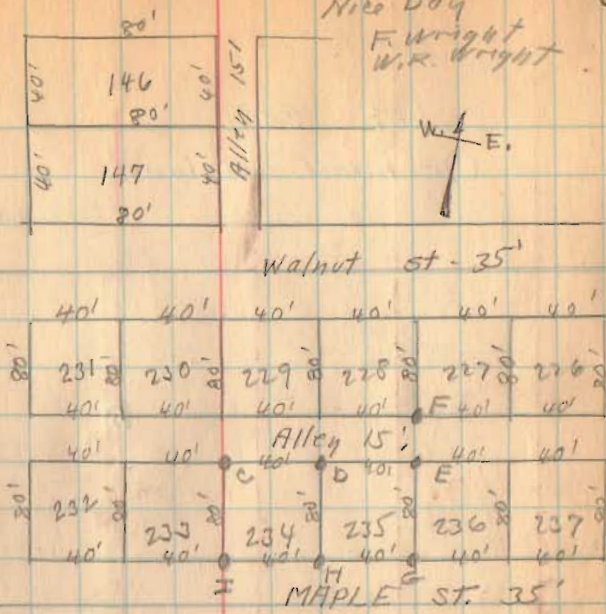
F - Found old Hub (Rotten)

Placed 2" x 2" x 24" Hub

G - Placed Iron Pipe

H - Placed 3/4" Pipe

I - Placed Hub



Measured from line AB  
To C 35' st + 40' + 40' <sup>check</sup> O.K.  
Set I, H, G 80' from C, D, E  
Respectively and measuring  
from line AB 35' st + 40' + 40' etc.

(1783)

INDEXED ON MAP

(over)



LOT 236  
ORCHARD ISL.

- A = 2" □ Man. Found  
 B = 1" ∅ Bar Found  
 C = 1" ∅ Bar Found  
 D = 1" ∅ Bar Found  
 E = 3/4" Pipe Set fdn. N.E. 18.30 #236  
 " " " " N.E. 25.80 #235  
 F = " " " "  
 G = " " " "  
 H = " " " " fdn. N.E. 17.77 - Tupper  
 " " " " N.W. 19.25 #236

See FB / for Survey of lot  
235 by F.F. Wright.

Found corners set by Wright, they  
did not fit for line of Mauger St.  
& alley, @ "E" found 1/2" pipe 3.5'  
north of E.

INDEXED ON MAP  
1783

Dodson  
G. Geaslin  
D. Gilbert

7-22-61  
80°

8

