

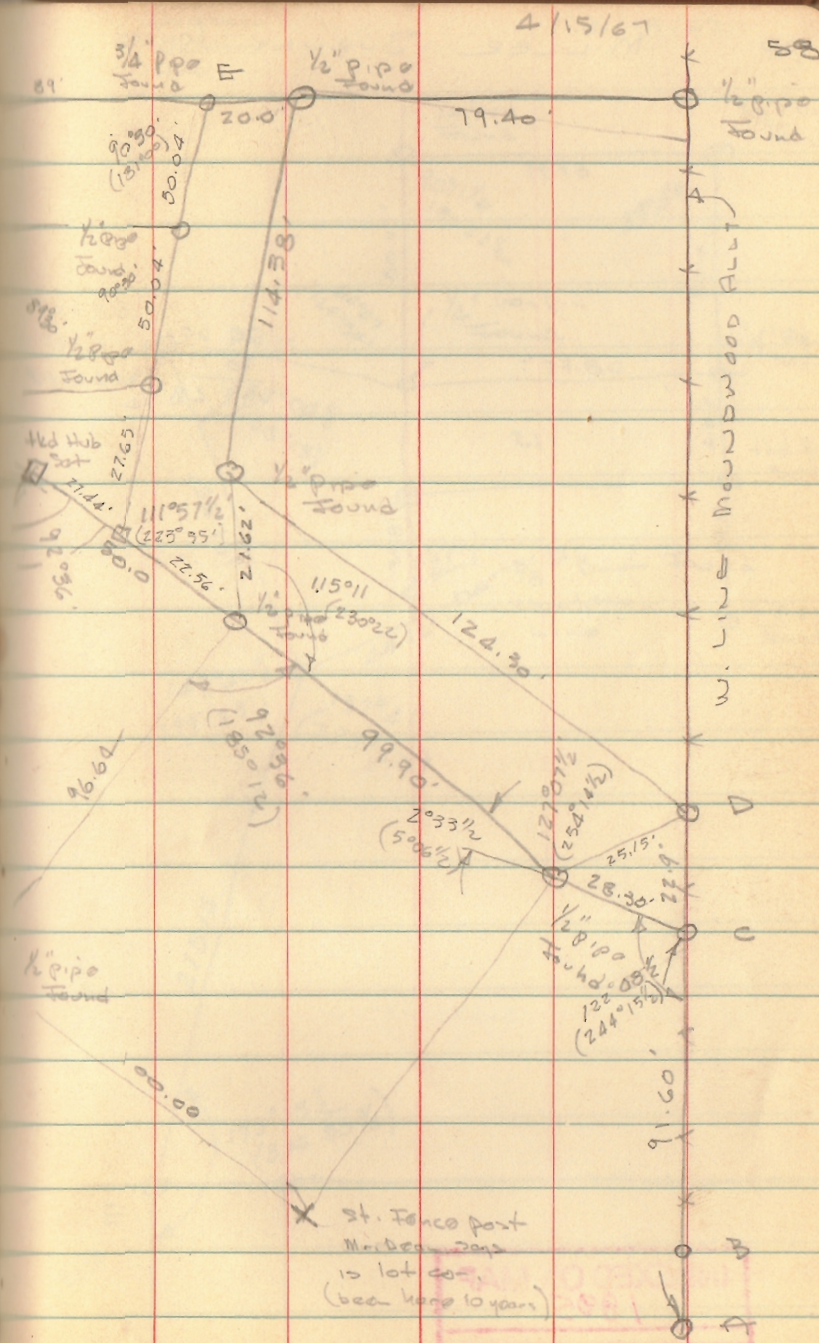
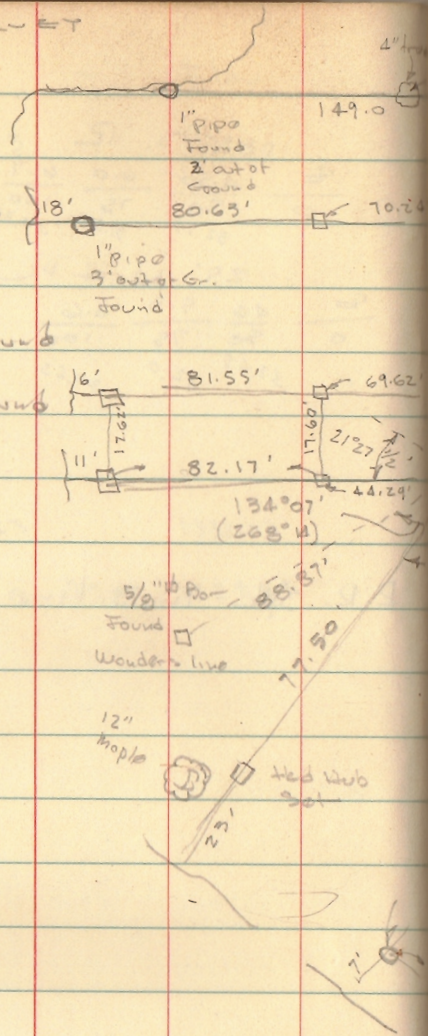
MILLER SURVEY

A = Stone found 18'

B = 2" pipe

C = 3/4" pipe found

D = 1/2" pipe found



INDEXED ON MAP
1885

1885

5-22-18

Lee Surveying and Mapping Co.

Land Surveys • Topography • Subdivisions • Construction Layout



APPROVED

117 N. Madriver St.
Bellefontaine OH 43311



Phone: (937) 593-7335
Fax: (937) 593-7444
surveys@lsminc.us

STATE OF OHIO INDIAN LAKE RESERVOIR LANDS 0.027 ACRE

Lying in Virginia Military Survey 9925, 9946, 10121, Washington Township, Logan County, Ohio (all records referenced herein refer to the Logan County Records of Deeds).

Being out of the State of Ohio Indian Lake Reservoir Lands and being more particularly described as follows:

COMMENCING at a 3/4 inch iron pipe found at the northwest corner of Lot 13 and the southwest corner Lot 14 of Hedges Subdivision as recorded in Plat Cabinet A, Slide 358 and being on the northeasterly line of the Thomas A. Ewers and Linda K. Ewers and Steven R. Kerber and Phyllis E. Kerber 0.214 acre tract as deeded and described in Official Record 1145, Page 176;

THENCE, with a common line to the southwesterly line of said Lot 13 and said northeasterly line, S 38°-40'-49" E, a distance of 14.89 feet to a 5/8 inch iron rod found at the common easterly corner to said 0.214 acre tract and the Cherie L. Mowery and Timothy P. Turnwald 0.315 acre tract as deeded and described in Official Record 1046, Page 417;

THENCE, with the line common to said 0.214 acre and 0.315 acre tracts, the following two (2) courses:

- (1) S 60°-29'-16" W, a distance of 4.18 feet to a 1/2 inch square iron bar found; and
- (2) S 61°-03'-03" W, a distance of 62.43 feet to a 5/8 inch iron rod found at the **TRUE POINT OF BEGINNING**;

THENCE, continuing with the northwesterly line of said 0.315 acre tract, S 61°-03'-03" W, a distance of 14.96 feet to a point on the face of a concrete seawall;

THENCE, with new division lines through said State of Ohio Indian Lake Reservoir Lands, the following four (4) courses:

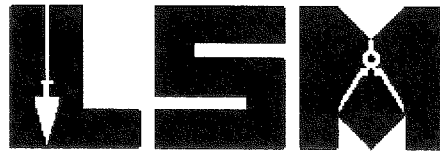
- 1) N 35°-53'-14" W, with the face of said concrete seawall, a distance of 3.22 feet to a point on the corner of a concrete boat well;

INDEXED ON MAP
1085

Lee Surveying and Mapping Co.

Land Surveys • Topography • Subdivisions • Construction Layout

117 N. Madriver St.
Bellefontaine OH 43311



Phone: (937) 593-7335
Fax: (937) 593-7444
surveys@lsminc.us

- 2) N 78°-16'-40" W, across said concrete boatwell, a distance of 23.03 feet to a point on the corner of said concrete boat well;
- 3) N 43°-17'-21" W, with the face of said concrete seawall, a distance of 84.39 feet to a point; and
- 4) N 53°-29'-58" E, with the northwesterly line of said 0.214 acre tract and a southerly line of the Lois A. Hoying, Trustee, 0.119 acre tract as deeded and described in Official Record 1130, Page 355 extended, a distance of 8.82 feet to a 3/4 inch iron pipe found at the westerly corner common to said 0.214 acre and 0.119 acre tracts;

THENCE, with the southwesterly lines of said 0.214 acre tract, the following three (3) courses:

- (1) S 41°-34'-01" E, a distance of 50.68 feet to a 5/8 inch iron rod found;
- (2) S 62°-19'-09" E, a distance of 53.79 feet to a point in the water within the boat well; and
- (3) S 61°-35'-25" E, a distance of 8.01 feet to the **POINT OF BEGINNING.**

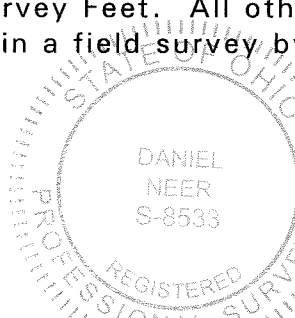
Containing 0.027 acre, more or less.

Iron rods set, where indicated, are 30 inches in length, 5/8 inch in diameter with an orange plastic I.D. cap stamped "L-8533".

Property is subject to any and all previous easements and rights-of-way of record.

The basis for bearings, described herein, is an assumed bearing for the southwesterly line of Lot 13, being S 38°-40'-49" E. Distances are expressed in U.S. Survey Feet. All other measurements are from angles and distances measured in a field survey by Lee Surveying and Mapping Co. on May 4, 2018.

Description prepared by:



Daniel A. Neer
Professional Surveyor No. 8533
May 16, 2018

INDEXED ON MAP
1885

45280418

5-22-18

APPROVED

LEGEND:

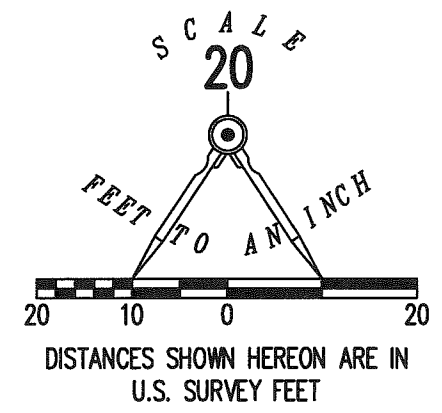
- ⊕ 1-1/2 INCH IRON PIPE FOUND
- 5/8 INCH IRON ROD FOUND
- ⊙ 3/4 INCH IRON PIPE FOUND
- 1/2 INCH SQUARE IRON BAR FOUND
- P.O.B. = POINT OF BEGINNING
- P.O.C. = POINT OF COMMENCEMENT

DEED & SURVEY REFERENCES:

O.R. 1046, PG. 417
 O.R. 1130, PG. 355
 O.R. 1145, PG. 176

SURVEY BY DANIEL E. GILBERT, P.S. 5402,
 ENTITLED "JEAN S. BUCKLES PROPERTY AND
 STATE LANDS", DATED JULY, 1975.
 LOGAN COUNTY MAP ROOM FILE 5861

SURVEY BY WILLIAM K. BRUCE, P.S. 7437,
 ENTITLED "RETRACEMENT SURVEY OF THE
 WILLIAM K. SANKO AND MARIA A. SANKO",
 DATED OCTOBER 9, 2007.

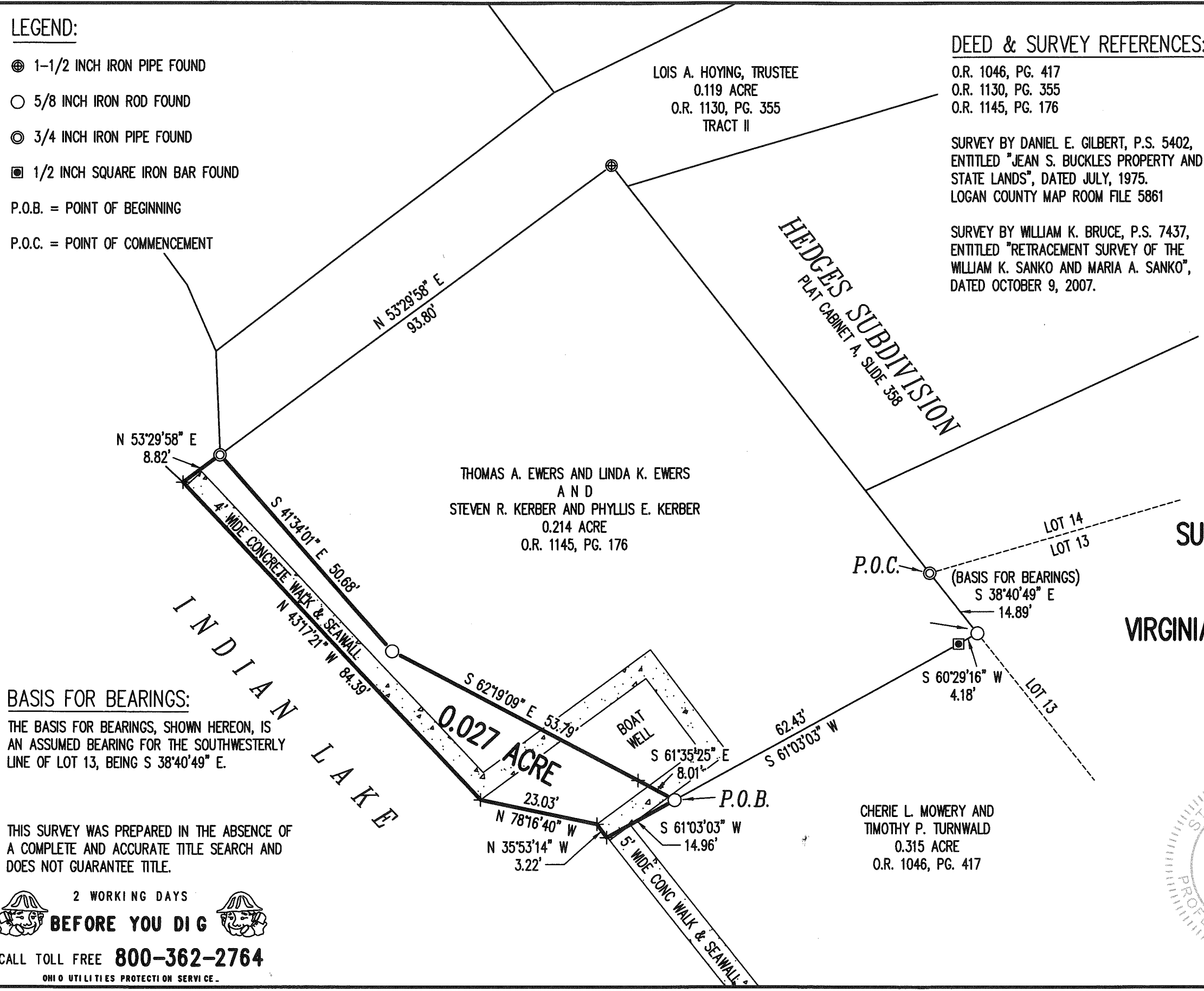


BASIS FOR BEARINGS:

THE BASIS FOR BEARINGS, SHOWN HEREON, IS
 AN ASSUMED BEARING FOR THE SOUTHWESTERLY
 LINE OF LOT 13, BEING S 38°40'49" E.

THIS SURVEY WAS PREPARED IN THE ABSENCE OF
 A COMPLETE AND ACCURATE TITLE SEARCH AND
 DOES NOT GUARANTEE TITLE.

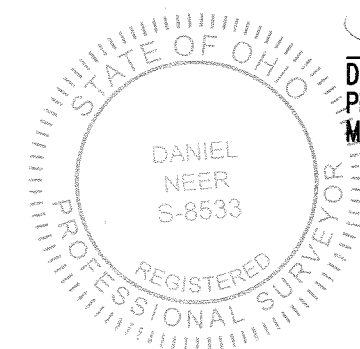
2 WORKING DAYS
BEFORE YOU DIG
 CALL TOLL FREE **800-362-2764**
 OHIO UTILITIES PROTECTION SERVICE.



**SURVEY OF 0.027 ACRE OUT OF THE
 STATE OF OHIO
 INDIAN LAKE RESERVOIR LANDS
 VIRGINIA MILITARY SURVEY 9925, 9946, 10121
 WASHINGTON TOWNSHIP
 LOGAN COUNTY, OHIO**

SURVEYED BY:

 DANIEL A. NEER
 PROFESSIONAL SURVEYOR NO. 8533
 MAY 4, 2018



COPYRIGHT 2018 BY:
LEE SURVEYING & MAPPING CO.
 117 North Madriver Street
 BELLEFONTAINE, OHIO 43311
 (937) 593-7335
 WWW.LSMINC.US
 surveys@lsminc.us

KSS D0418 45280418 L-4528-3

INDEXED ON MAP
 1885



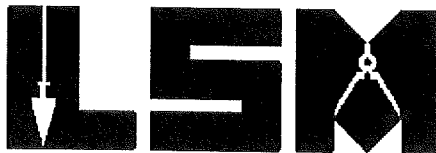
9-17-18

APPROVED

Lee Surveying and Mapping Co.

Land Surveys • Topography • Subdivisions • Construction Layout

117 N. Madriver St.
Bellefontaine OH 43311



Phone: (937) 593-7335
Fax: (937) 593-7444
surveys@lee-surveying.com

STATE OF OHIO INDIAN LAKE RESERVOIR LANDS 0.005 ACRE

Lying in Virginia Military Survey 9925-9946-10121, Washington Township, Logan County, Ohio (all records referenced herein refer to the Logan County Records of Deeds).

Being out of the State of Ohio Indian Lake Reservoir Lands and being more particularly described as follows:

COMMENCING at MAG spike found at the southeast corner of Lot 46-491 of Indian Lake Reservoir Lands No. 2 (Plat Cabinet A, Slide 483), being a corner common to the Jon M. Gillespie 0.211 acre tract as deeded and described in Official Record 1029, Page 417 and the Lois A. Hoying, Trustee, 0.119 acre tract as deeded and described in Official Record 1130, Page 355, Tract II;

THENCE, with the common line to said 0.211 acre and 0.119 acre tracts, S 52°-33'-18" W, a distance of 82.01 feet to a 5/8 inch iron rod found at the **TRUE POINT OF BEGINNING**;

THENCE, with the westerly line of said 0.119 acre tract, S 02°-35'-51" E, a distance of 19.68 feet to a 1-1/2 inch iron pipe found at a west corner to the Thomas A. Ewers and Linda K. Ewers and Steven R. Kerber and Phyllis E. Kerber 0.214 acre tract as deeded and described in Official Record 1145, Page 176;

THENCE, with the common line to said 0.119 acre and 0.214 acre tracts extended, being a new division line through said Indian Lake Reservoir Lands, S 53°-31'-46" W, a distance of 8.64 feet to a point on the shore line of Indian Lake;

THENCE, with said shore line and new division lines through said Reservoir Lands, the following two (2) courses:

- 1) N 29°-25'-23" W, a distance of 10.53 feet to a point; and
- 2) N 06°-35'-48" W, a distance of 6.50 feet to a point;

INDEXED ON MAP
1885

Lee Surveying and Mapping Co.

Land Surveys • Topography • Subdivisions • Construction Layout

117 N. Madriver St.
Bellefontaine OH 43311



Phone: (937) 593-7335
Fax: (937) 593-7444
surveys@lee-surveying.com

THENCE, with a new division line through said Reservoir Lands and the extension of said common line to said 0.211 acre and 0.119 acre tracts, N 52°-33'-18" E, a distance of 15.08 feet to the **POINT OF BEGINNING**.

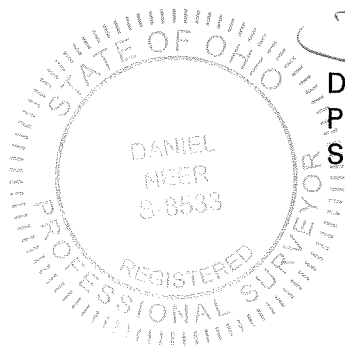
Containing 0.005 acre, more or less.

Iron rods set, where indicated, are 30 inches in length, 5/8 inch in diameter with a plastic I.D. cap stamped "P.S. 8533".

Property is subject to any and all previous easements and rights-of-way of record.

The basis for bearings, described herein, is an assumed bearing for the southerly property line of the Jon M. Gillespie 0.211 acre tract, being S 52°-33'-18" W. Distances are expressed in U.S. Survey Feet. All other measurements are from angles and distances measured in a field survey by Lee Surveying and Mapping Co. on August 29, 2018.

Description prepared by:



A handwritten signature in black ink, appearing to read 'D. Neer', written over the seal.

Daniel A. Neer
Professional Surveyor No. 8533
September 7, 2018

17260818

INDEXED ON MAP
1885



APPROVED

9-17-18

Lee Surveying and Mapping Co.

Land Surveys • Topography • Subdivisions • Construction Layout

117 N. Madriver St.
Bellefontaine OH 43311



Phone: (937) 593-7335
Fax: (937) 593-7444
surveys@lee-surveying.com

STATE OF OHIO INDIAN LAKE RESERVOIR LANDS 0.042 ACRE

Lying in Virginia Military Survey 9925-9946-10121, Washington Township, Logan County, Ohio (all records referenced herein refer to the Logan County Records of Deeds).

Being out of the State of Ohio Indian Lake Reservoir Lands and being more particularly described as follows:

COMMENCING at MAG spike found at the southeast corner of Lot 46-491 of Indian Lake Reservoir Lands No. 2 (Plat Cabinet A, Slide 483), being a corner common to the Jon M. Gillespie 0.211 acre tract as deeded and described in Official Record 1029, Page 417 and the Lois A. Hoying, Trustee, 0.119 acre tract as deeded and described in Official Record 1130, Page 355, Tract II;

THENCE, with the common line to said 0.211 acre and 0.119 acre tracts, S 52°-33'-18" W, a distance of 82.01 feet to a 5/8 inch iron rod found at the **TRUE POINT OF BEGINNING**;

THENCE, with said common line extended and a new division line through said Indian Lake Reservoir Lands, S 52°-33'-18" W, a distance of 15.08 feet to a point on the shore line of Indian Lake;

THENCE, with said shore line and new division lines through said Reservoir Lands, the following eight (8) courses:

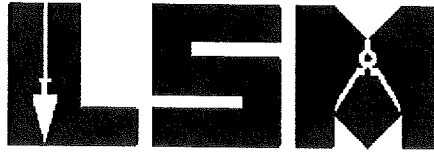
- 1) N 06°-35'-48" W, a distance of 11.62 feet to a point;
- 2) N 33°-19'-47" W, a distance of 24.67 feet to a point;
- 3) N 35°-10'-02" W, a distance of 57.30 feet to a point;
- 4) N 15°-05'-18" W, a distance of 22.14 feet to a point;
- 5) N 08°-34'-41" E, a distance of 12.99 feet to a point;
- 6) N 30°-39'-20" E, a distance of 26.79 feet to a point;
- 7) N 51°-28'-39" E, a distance of 12.67 feet to a point; and

INDEXED ON MAP
1885

Lee Surveying and Mapping Co.

Land Surveys • Topography • Subdivisions • Construction Layout

117 N. Madriver St.
Bellefontaine OH 43311



Phone: (937) 593-7335
Fax: (937) 593-7444
surveys@lee-surveying.com

8) S 73°-14'-39" E, a distance of 4.55 feet to a point on the face of a concrete walk & seawall;

THENCE, with said face of concrete walk & seawall and continuing with new division lines, the following two (2) courses:

- 1) N 51°-08'-57" E, a distance of 4.86 feet to a point; and
- 2) N 56°-30'-19" E, a distance of 4.15 feet to a point on the edge of a concrete boat well;

THENCE, across the boat well and continuing with a new division line, N 57°-15'-53" E, a distance of 10.40 feet to a point on said face of concrete walk & seawall;

THENCE, with said face of concrete walk & seawall and continuing with said new division lines, the following two (2) courses:

- 1) N 56°-31'-36" E, a distance of 8.07 feet to a point on the corner of said concrete walk & seawall; and
- 2) S 31°-13'-16" E, a distance of 1.91 feet to a point on the edge of said concrete walk & seawall at the intersection of said shore line;

THENCE, with said shore line and continuing with a new division line, N 58°-45'-48" E, a distance of 2.44 feet to a point;

THENCE, continuing with a new division line and the extension of a line common to said 0.211 acre and the Michael D. Swonguer and Vivian L. Swonguer 0.15 acre tract as deeded and described in Official Record 451, Page 546, S 37°-12'-51" E, passing a MAG nail set at a distance of 0.76 feet, a total distance of 2.83 feet to a point common to said 0.211 acre and 0.15 acre tracts;

THENCE, with lines of said 0.211 acre tract, the following six (6) courses:

- 1) S 60°-37'-08" W, a distance of 25.46 feet to a point;
- 2) S 37°-53'-18" W, a distance of 22.00 feet to a 5/8 inch iron rod set;

INDEXED ON MAP

1885

Lee Surveying and Mapping Co.

Land Surveys • Topography • Subdivisions • Construction Layout

117 N. Madriver St.
Bellefontaine OH 43311



Phone: (937) 593-7335
Fax: (937) 593-7444
surveys@lee-surveying.com

- 3) S 26°-35'-45" W, a distance of 30.00 feet to a MAG nail set;
- 4) S 28°-07'-22" E, a distance of 28.00 feet to a MAG nail set;
- 5) S 36°-24'-34" E, a distance of 65.00 feet to a 5/8 inch iron rod set; and
- 6) S 23°-40'-42" E, a distance of 13.96 feet to the **POINT OF BEGINNING**.

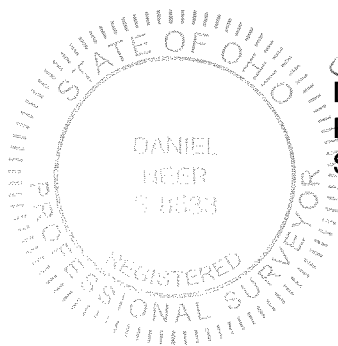
Containing 0.042 acre, more or less.

Iron rods set, where indicated, are 30 inches in length, 5/8 inch in diameter with a plastic I.D. cap stamped "P.S. 8533".

Property is subject to any and all previous easements and rights-of-way of record.

The basis for bearings, described herein, is an assumed bearing for the southerly property line of the Jon M. Gillespie 0.211 acre tract, being S 52°-33'-18" W. Distances are expressed in U.S. Survey Feet. All other measurements are from angles and distances measured in a field survey by Lee Surveying and Mapping Co. on August 29, 2018.

Description prepared by:



D. Neer
Daniel A. Neer
Professional Surveyor No. 8533
September 7, 2018

17260818



