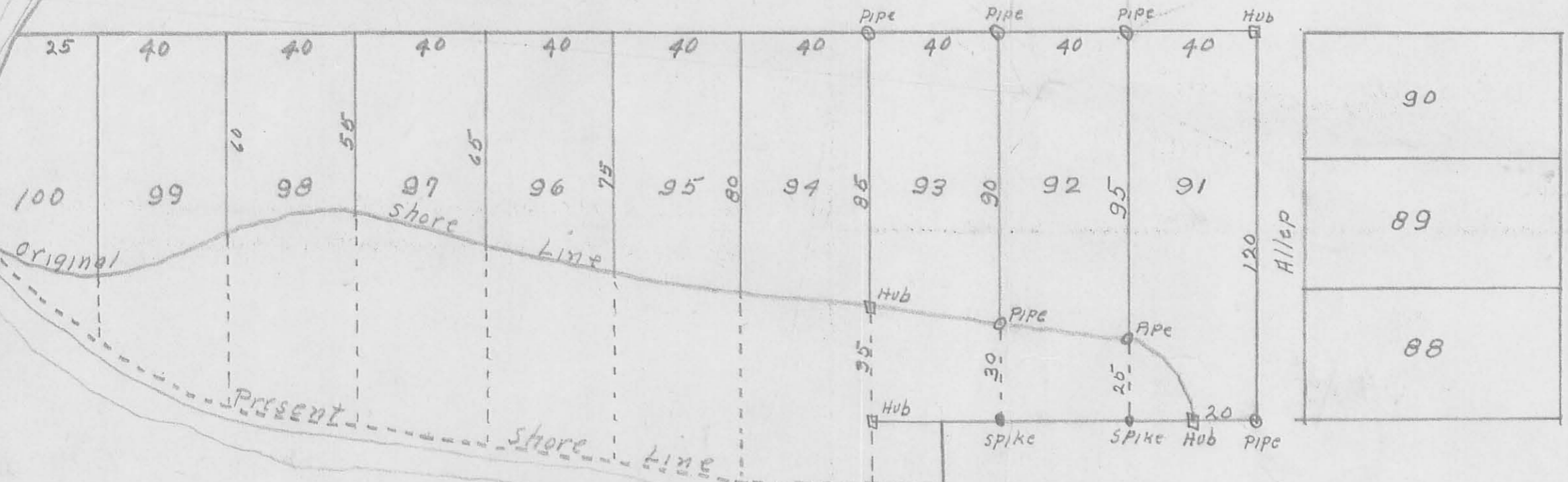


101 102 103 104 105 106 107 108 109 110 111

E I M ST.

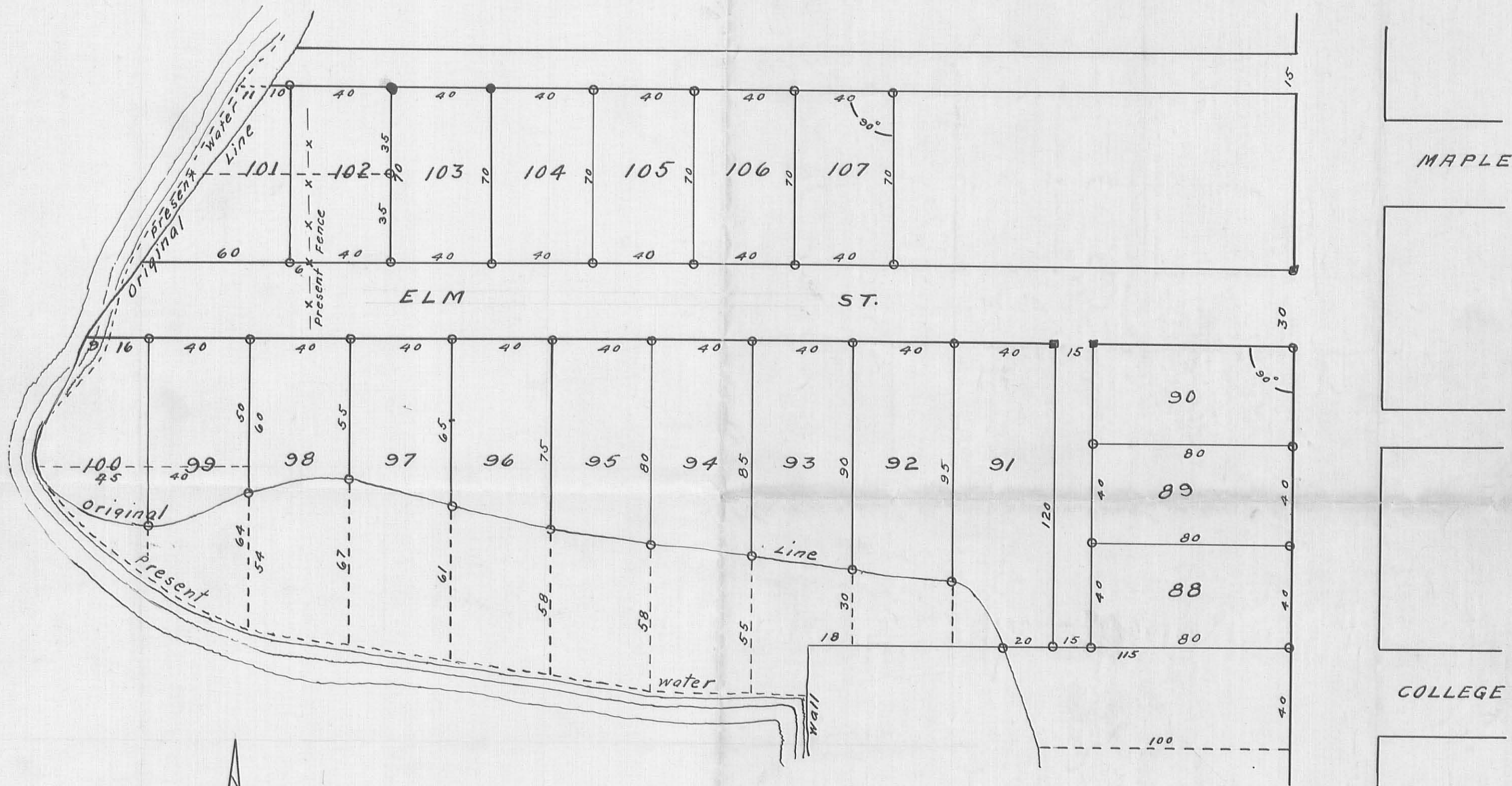


Survey of Lots 91-92-93  
For Mr Andy Parker  
Orchard Island.

INDEXED ON MAP

2407 1P

INDEXED ON MAP



Plat of Lots belonging to C. H. Mayer  
 on Orchard Island as relocated  
 October 19, 1935. J. S. Crane.

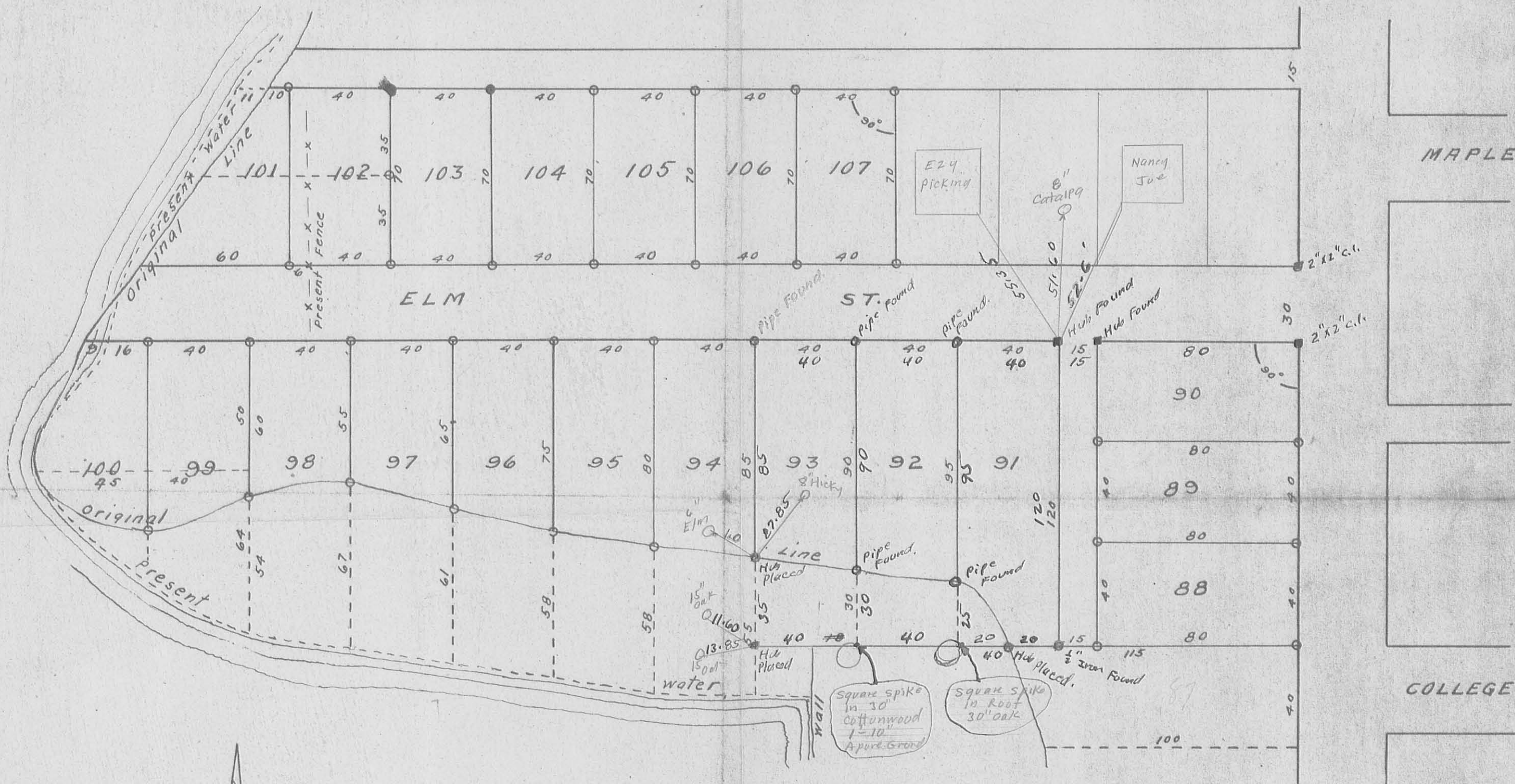
SCALE - 1 INCH = 40 FEET.

- IRON PIPE
- IRON BARS
- STAKES

2407 2P

INDEXED ON MAP





Plat of Lots belonging to C. H. Mayer  
 on Orchard Island as relocated  
 October 19, 1935. J. S. Crane.

SCALE - 1 INCH = 40 FEET.

- IRON PIPE
- IRON BARS
- STAKES

Mayer survey  
 June, 30 1945  
 Grover Wilgus  
 F. F. Wright.

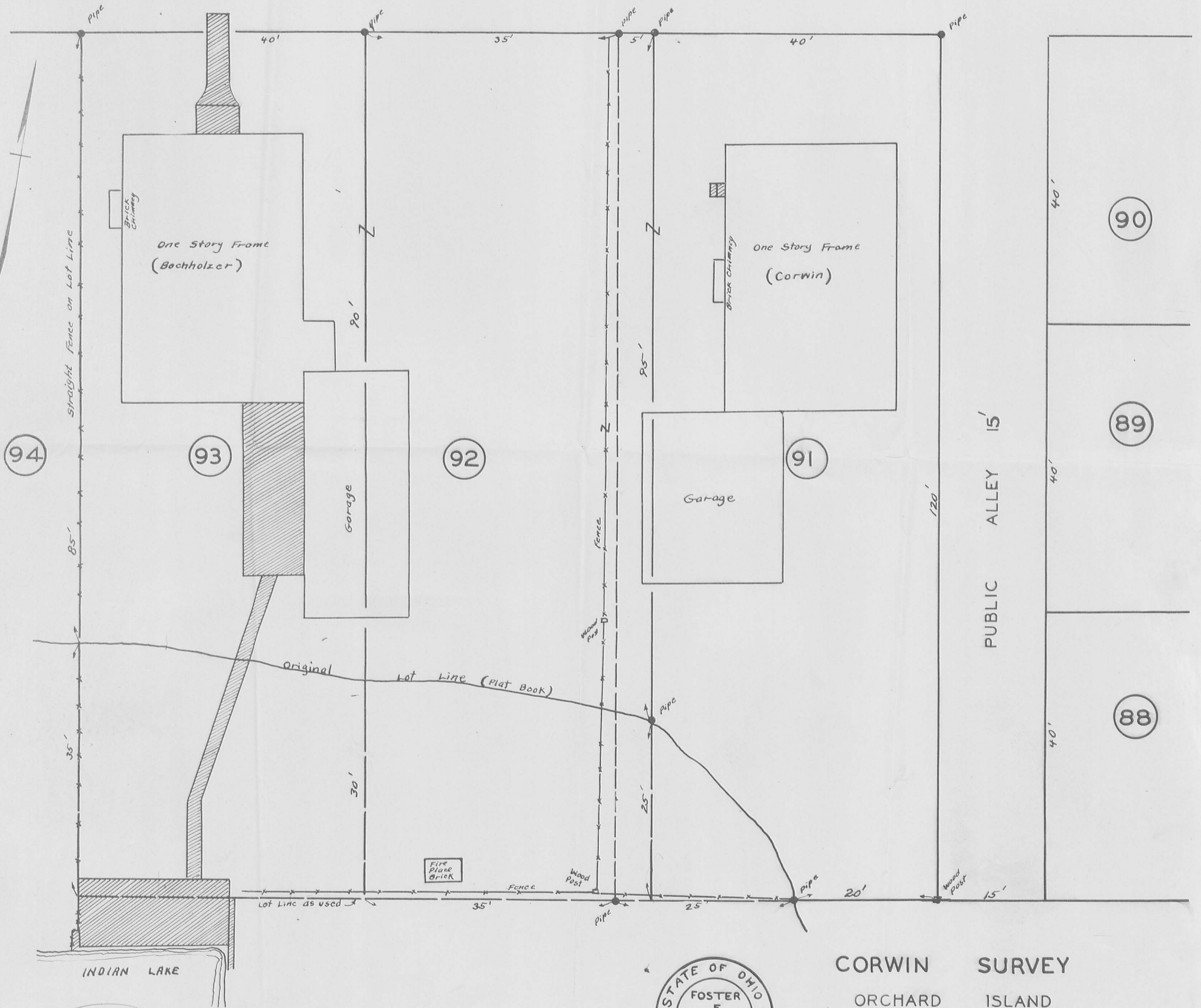
Book 418  
 Folio 87

1697 2407 30

INDEXED ON MAP



ELM STREET 30'



94

93

92

91

90

89

88

PUBLIC ALLEY 15'

INDIAN LAKE



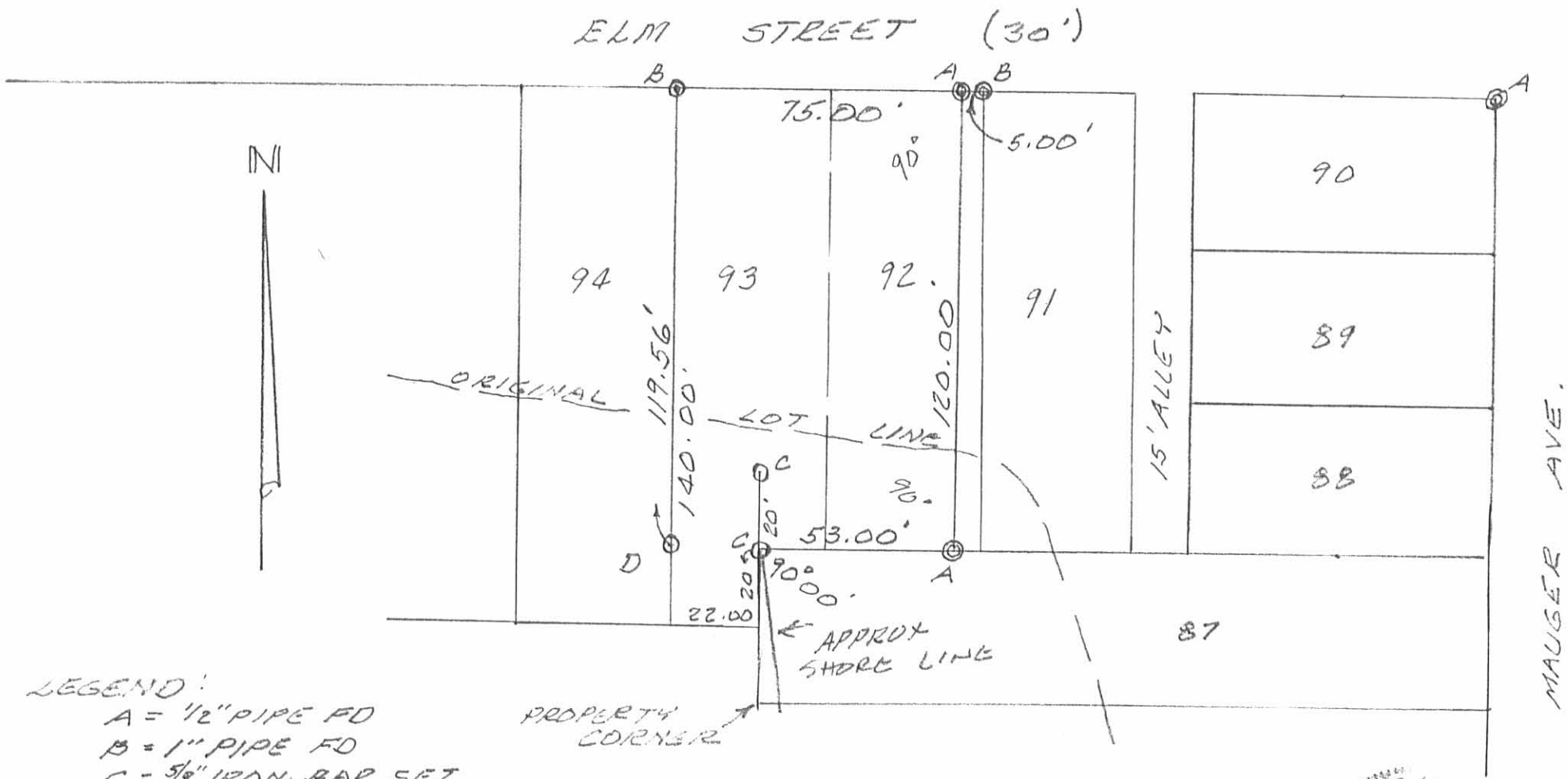
CORWIN SURVEY  
 ORCHARD ISLAND  
 WASHINGTON TOWNSHIP  
 LOGAN COUNTY OHIO  
 JULY 1959 1"=10'

FILE FW-279

Note:  
 Easement R.J. Keifer to Paul E. Corwin  
 Logan County Recorder's Vol. 204 Page 168  
 Nov. 1, 1951

File  
~~1053~~  
 2407 AP  
 INDEXED ON MAP

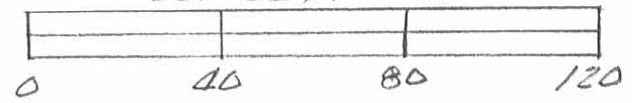
RECEIVED 6-29-94 smj



LEGEND:

- A = 1/2" PIPE FD
- B = 1" PIPE FD
- C = 5/8" IRON BAR SET
- D = 5/8" IRON BAR FD

SURVEY OF PT. LOT 92 & LOT 93,  
 ORCHARD ISLAND, WASHINGTON  
 TOWNSHIP, LOGAN COUNTY,  
 OHIO (THESE LINES ESTABLISHED  
 BY J.S. CRANE IN 1935).  
 MAY 9, 1994.  
 SCALE: 1" = 40'



INDEXED ON MAP  
 2407 5P



*Leslie H. Geeslin*  
 LESLIE H. GEESLIN  
 RUSHSVLVANIA, OHIO  
 PH 513-468-2793