

WORDEL SURVEY
WASHINGTON TOWNSHIP
LOGAN COUNTY, OHIO
MAY 6, 1954

The following described real estate situated in Virginia Military Survey No. 9925-9946-10121, Washington Township, Logan County, Ohio and more particularly described as follows:

Commencing in the center of State Route #33 at Station 518+72 between a 3.00 acre tract of Katherine M. Tracy and a 7.44 acre tract of Kenneth L. Wood, as shown on page #35 of Field Book #570 in the Logan County Engineer's Office; thence with the center of said highway S. 82°-00' W. 100.0 feet for the beginning point of this description; thence continuing with center of the highway S. 82°-00' W. 100.0 feet; thence N. 6°-43' W. 230.0 feet to a wooden hub, passing an iron pipe at 30.0 feet in the North right-of-way line of the highway; thence N. 82°-00' E. 100.0 feet to a wooden hub; thence S. 6°-43' E. 230.0 feet to the place of beginning, passing an iron rod at 200.0 feet in the North right-of-way line of said highway, containing 0.53 of an acre.

This tract is taken from a 7.44 acre tract of Kenneth L. Wood.

D.L.D. #2
Page 1

INDEXED ON MAP
2498 1D

The following described land in Washington Township, Logan County, Ohio

9925
9946 and being in V.M.S. 10121

Beginning at a point in the center of State Highway Number 166 (U.S. Route Number 33) at the S.E. corner of Dunn's Pond Allotment thence with the east side of said Dunn's Pond Allotment which is the east side of a fifteen foot street known as Center Street N. 6 - 52 W. 458.00 feet to an iron said iron being the beginning point of this survey thence again with the east side of said Dunn's Pond Allotment and with the east side of said Center Street N. 6 - 52 W. 456.60 feet to a point in State Line so called

thence with the state line so called S. 76 - 07 E. 68.00 feet to an iron at station 6/14 plus 22.00 of the State Line as shown plan of State of Ohio Department of Natural Resources Division of Parks File Number 46 PK 551 S I - I

thence with the state line so called S. 60 - 51 E. 404.00 feet to an iron at station 68 plus 26.00 of the State Line as shown plan of State of Ohio Department of Natural Resources Division of Parks File Number 46 PK 551 S I - I

thence S. 23 - 11 E. 78.70 feet to an iron in the west line of Katherine Tracy's three acre tract
thence with the west side of said Tracy three acre tract S. 6 - 43 E. 370.00 feet to an iron

thence S. 82 - 00 W. 276.10 feet to an iron the last described line passing an iron at the N.E. corner of Eugene Wardle's 0.53 acre tract at 100.00 feet and also passing ~~the N.W. corner~~ an iron at the N.W. corner of said Wardle's 0.53 acre tract at 200.00 feet the last described line being 230.00 feet north of and parallel with the center line of State Highway Number 166

thence N. 6 - 52 W. 228.00 feet to an iron
thence S. 82 - 00 W. 134.00 feet to the place of beginning

said described tract containing 4.49 acres

The said 4.49 acres being off of the north side of Kenneth L. Wood's Present 6.91 acre tract

cc
Logan County Engineer

27
2498
INDEXED BY MAN

Wood Survey Washington Township 0.53 acre September 1961

The following described land in Washington Township, Logan County, Ohio
and being in V.M.S. ⁹⁹²⁵ 9946
10121

Beginning at a point in the center of State Highway Number 168 (U.S. Route Number 33 old location) at the S.E. corner of Dunn's Pond Allotment which is the east side of a fifteen foot Street known as Center Street.

Thence with the center line of U.S. Route Number 33 (Old location) N. 82 - 00 E. 309.60 feet for the true beginning point of this survey. Said beginning point being the S.E. corner of Harry Huntington's 0.53 acre tract. Thence with the east side of said Huntington's 0.53 acre tract N. 6 - 43 W. 230.00 feet to an iron in the south line of Forrest C. Reese's 4.49 acre tract.

Thence with the south line of said Reese 4.49 acre tract N. 82 - 00 E. 100.00 feet to an iron in the west line of Katherine Tracy's 3.00 acre tract.

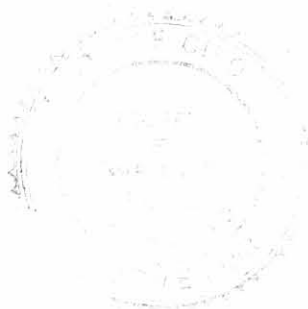
Thence with the west line of said Tracy 3.00 acre tract S. 6 - 43 E. 230.00 feet to the center line of U.S. Route Number 33 (Old location)

Thence with the center line of U.S. Route Number 33 (Old location) S. 82 - 00 W. 100.00 feet to the place of beginning.

The above described tract containing 0.53 of one acre.

2498

cc
Logan County Engineer



3D-1

Wood Survey Washington Township 1.01 Acres September 1961

The following described land in Washington Township, Logan County, Ohio

and being in V.M.S. 9925
9946 ;
10121

Beginning at a point in the center of State Highway Number 168 (U.S. Route Number 33 Old Location) at the S.E. corner of Dunn's Pond Allotment which is the east side of a fifteen foot street which is known as Center Street and with the east side of Dunn's Pond Allotment N. 6 - 52 W. 198.00 feet to an iron at the S.W. corner of a 0.80 acre tract.

Thence with the south side of said 0.80 acre tract N. 82 - 00 E. 134.00 feet to an iron.

Thence with the east side of said 0.80 acre tract N. 6 - 52 W. 32.00 feet to an iron at the S.W. corner of Forrest C. Reese's 4.49 acre tract.

Thence with the south side of said Reese 4.49 acre tract N. 82 - 00 E. 76.10 feet to an iron at the N.W. corner of Harry Huntington's 0.53 acre tract.

Thence with the west side of said Huntington's 0.53 acre tract S. 6 - 43 E. 230.00 feet to the center of U.S. Route Number 33 (Old location)

Thence with the center line of U.S. Route Number 33 (Old location) S. 82 - 00 W. 209.60 feet to the place of beginning.

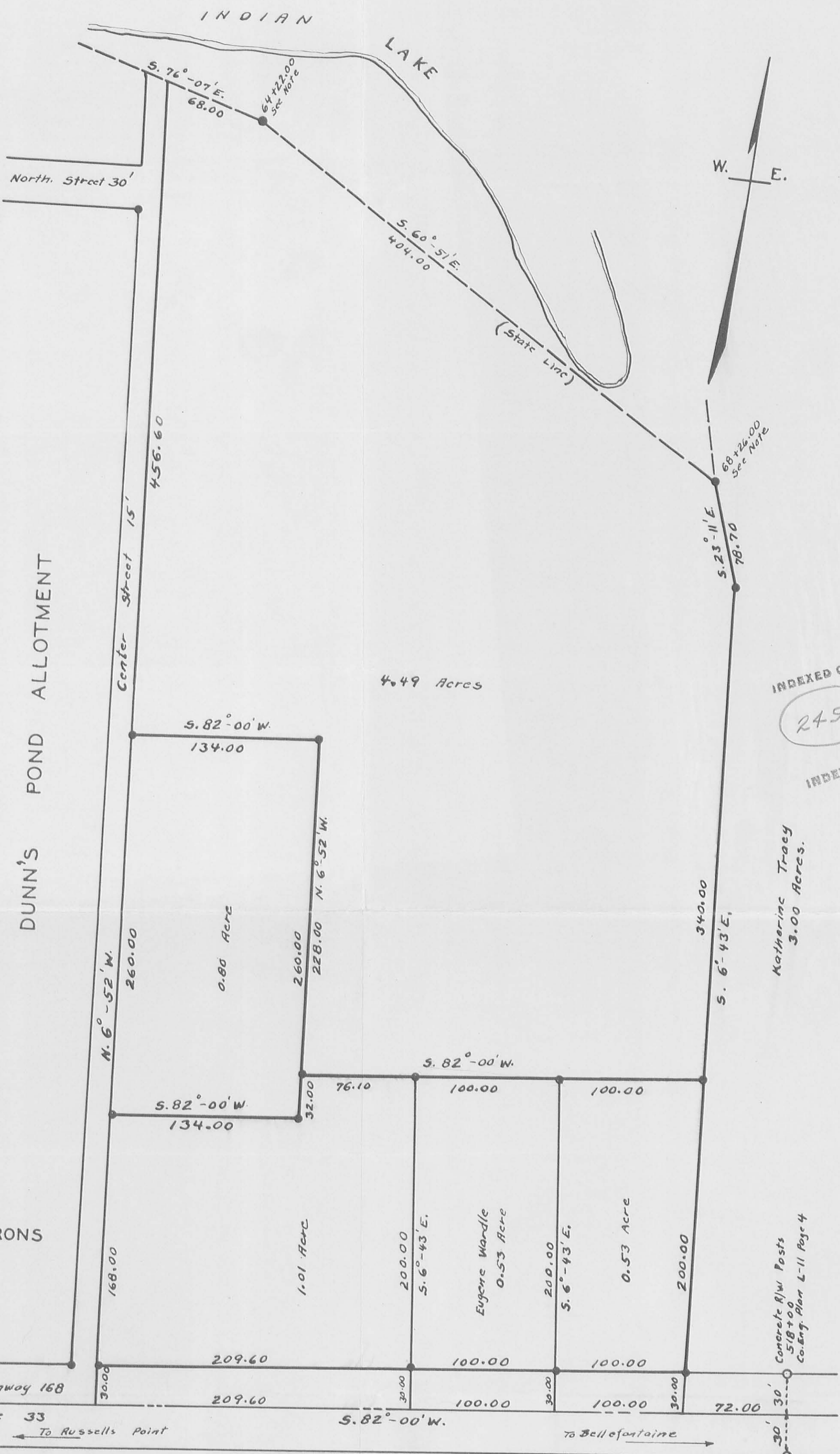
The above described tract containing 1.01 acres.

cc
Logan County Engineer



3D-2

OK Plat Book
9/14/61
D.E.L.



Note 1-
 Center Street is part of Dunn's Pond Allotment
 Field Notes Book FW-6 File FW-263
 Logan County Auditor's Duplicate June 1, 1959
 Kenneth Wood 6.91 Acres
 State Line Station 64+22.00 and station
 68+26.00 from State Map Dept. of Natural
 Resources Division of Parks
 File No. 46 PK 55151-1

WOOD SURVEY

WASHINGTON TOWNSHIP

LOGAN COUNTY, OHIO

V.M.S. 9925
 9946
 10121

JUNE 1959

1" = 60'

0' 50' 100'



Lee Surveying and Mapping Co.



Farm Surveys • Lot Surveys • Topography • Subdivisions • Construction Layout

143 EAST COLUMBUS AVENUE
BELLEFONTAINE, OHIO 43311

(513) 593-7335

JEFFREY I. LEE, P.S.

LEADER DEVELOPMENT PROPERTIES, INC. AND CGAS INVESTMENT CORPORATION 6.830 ACRES

LYING IN VIRGINIA MILITARY SURVEY 9925-9946-10121, WASHINGTON TOWNSHIP, LOGAN COUNTY, OHIO.

BEING ALL OF THE LEADER DEVELOPMENT PROPERTIES, INC. 4.557 ACRE TRACT AS DEEDED AND DESCRIBED IN VOLUME 407, PAGE 377, THE CGAS INVESTMENT CORP. 1.04 ACRE TRACT AND 0.27 ACRE TRACT AS DEEDED AND DESCRIBED IN OFFICIAL RECORD 234, PAGE 490, TRACTS I AND II, THE C GAS INVESTMENT CORPORATION 0.18 ACRE TRACT AS DEEDED AND DESCRIBED IN OFFICIAL RECORD 234, PAGE 492, AND THE C GAS INVESTMENT CORP. 0.56 ACRE TRACT AS DEEDED AND DESCRIBED IN OFFICIAL RECORD 234, PAGE 493, WITH ALL REFERENCES BEING OF THE LOGAN COUNTY RECORDS OF DEEDS AND BEING MORE PARTICULARLY DESCRIBED AS FOLLOWS:

BEGINNING AT A RAILROAD SPIKE SET ON THE INTERSECTION OF THE CENTER-LINE OF OHIO ROUTE 366 AND THE EAST LINE OF CENTER STREET (15 FEET WIDE) PROJECTED. THE SAID RAILROAD SPIKE IS ON THE SOUTHWEST CORNER OF THE SAID 0.27 ACRE TRACT.

THENCE, WITH THE EAST LINE OF CENTER-STREET, N 7°-07'-00" W, A DISTANCE OF 197.92 FEET TO A 3/4 INCH IRON ROD FOUND, PASSING A 1-1/4 INCH METAL PIPE FOUND AT 30.00 FEET.

THENCE, WITH THE LINES OF THE BEATRICE M. ARNOLD 0.80 ACRE TRACT (O.R. 186, PG. 403) THE FOLLOWING THREE COURSES:

- N 81°-47'-09" E, A DISTANCE OF 133.95 FEET TO A 3/4 INCH METAL PIPE FOUND.
- N 7°-06'-17" W, A DISTANCE OF 260.00 FEET TO A 5/8 INCH IRON ROD SET.
- S 81°-52'-34" W, A DISTANCE OF 134.00 FEET TO A 3/4 INCH METAL PIPE FOUND.

THENCE, WITH THE EAST LINE OF CENTER STREET, N 7°-07'-00" W, A DISTANCE OF 426.60 FEET TO A 5/8 INCH IRON ROD SET.

THENCE, WITH THE LINES OF THE DUNN'S POND DOCKING ASSOCIATION 0.117 ACRE TRACT (VOL. 366, PG. 621) THE FOLLOWING TWO COURSES:

- N 79°-58'-00" E, A DISTANCE OF 59.30 FEET TO A 5/8 INCH IRON ROD FOUND.
- N 26°-02'-00" E, A DISTANCE OF 65.03 FEET TO A POINT ON THE NORTHEAST CORNER OF THE SAID 0.117 ACRE TRACT, PASSING A 5/8 INCH IRON ROD SET AT 60.00 FEET.

THENCE, WITH THE DEEDED NORTH LINES OF THE AFORESAID 4.557 ACRE TRACT AND BEING THE SAME NORTH LINES OF A TRACT OF 1.567 ACRES BY GOVERNOR'S DEED TO MAJOR PROPERTIES, INC. IN VOLUME 368, PAGE 473, THE FOLLOWING SIX COURSES:

- N 82°-17'-00" E, A DISTANCE OF 43.20 FEET TO A POINT IN THE WATER OF DUNN'S POND.
- N 33°-09'-00" E, A DISTANCE OF 56.00 FEET TO A POINT IN THE WATER OF DUNN'S POND.
- N 40°-27'-00" E, A DISTANCE OF 36.06 FEET TO A POINT IN THE WATER OF DUNN'S POND.
- N 78°-22'-00" E, A DISTANCE OF 49.67 FEET TO A POINT IN THE WATER OF DUNN'S POND.
- S 47°-34'-24" E, WITH THE WESTERLY LINE OF THE PATRICIA S. BOURQUIN 0.322 ACRE TRACT (O.R. 200, PG. 457), A DISTANCE OF 184.38 FEET TO A 1 INCH IRON BAR FOUND.
- N 84°-13'-54" E, WITH THE SOUTH LINE OF THE SAID 0.322 ACRE TRACT, A DISTANCE OF 24.37 FEET TO A 5/8 INCH IRON ROD FOUND.

THENCE, WITH THE WEST LINE OF THE THOMPSON & SONS DEVELOPMENT CORPORATION 0.155 ACRE TRACT (VOL. 389, PG. 509), S 4°-54'-38" E, A DISTANCE OF 223.00 FEET TO A 5/8 INCH IRON ROD SET.

THENCE, WITH THE WEST LINE OF THE T & C FARM, INC. 1.55 ACRE TRACT (O.R. 74, PG. 949, TR. III), S 26°-24'-32" E, A DISTANCE OF 76.80 FEET TO A 1/2 INCH METAL PIPE FOUND.

THENCE, WITH THE WEST LINE OF THE T & C FARM, INC. 3.00 ACRE TRACT (O.R. 74, PG. 949, TR. II), S 6°-57'-01" E, A DISTANCE OF 339.75 FEET TO A 3/4 INCH METAL PIPE FOUND.

THENCE, WITH THE LINES OF THE HARRY R. BROOKS 1.06 ACRE TRACT (O.R. 86, PG. 200) THE FOLLOWING TWO COURSES:

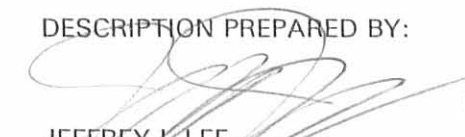
- S 81°-51'-40" W, A DISTANCE OF 199.99 FEET TO A 3/4 INCH METAL PIPE FOUND.
- S 6°-56'-47" E, A DISTANCE OF 230.01 FEET TO A RAILROAD SPIKE SET, PASSING A 5/8 INCH IRON ROD SET AT 200.01 FEET.

THENCE, WITH THE CENTER-LINE OF OHIO ROUTE 366 (60 FEET WIDE), S 81°-45'-49" W, A DISTANCE OF 209.51 FEET TO THE POINT OF BEGINNING.

CONTAINING 6.830 ACRES OF WHICH 0.144 ACRE IS WITHIN THE HIGHWAY RIGHT-OF-WAY.

THE BASIS FOR BEARINGS IS THE EAST LINE OF CENTER STREET BEING N 7°-07'-00" W, AND ALL OTHER BEARINGS ARE FROM ANGLES AND DISTANCES MEASURED IN A FIELD SURVEY BY LEE SURVEYING AND MAPPING COMPANY ON OCTOBER 23, 1995.

DESCRIPTION PREPARED BY:


 JEFFREY I. LEE
 PROFESSIONAL SURVEYOR 6359
 OCTOBER 29, 1995.

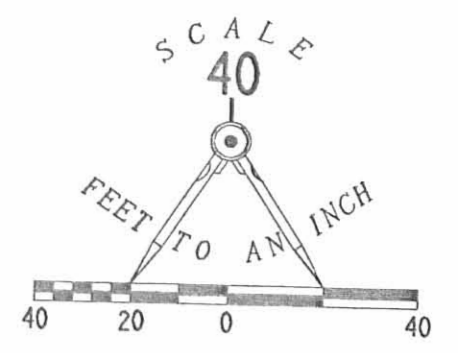


INDEXED ON MAP
2498 4D

DUNN'S POND OF INDIAN LAKE

SURVEY REFERENCES

- STATE ROUTE 366 RIGHT-OF-WAY PLANS.
- LOGAN COUNTY ENGINEER'S MAP ROOM, DRAWER R, FILE NUMBERS 4604, 1787, 1485, 1787, 4309, 2498, AND 5984.
- PREVIOUS SURVEY OF 4.557 ACRE TRACT BY LEE SURVEYING AND MAPPING, FILE NUMBER L-768.
- AN UNRECORDED SURVEY MAP BY OWEN K. SHIRK, P.S., TITLED "PROPERTY SURPLUS DUNNS POND AREA" SHEET 6 STATE OF OHIO DEPARTMENT OF NATURAL RESOURCES DIVISION OF PARKS, AND DATED MARCH & APRIL, 1969.



NEW LEGAL DESCRIPTION

LYING IN VIRGINIA MILITARY SURVEY 9925-9946-10121, WASHINGTON TOWNSHIP, LOGAN COUNTY, OHIO.

BEING ALL OF THE LEADER DEVELOPMENT PROPERTIES, INC. 4.557 ACRE TRACT AS DEEDED AND DESCRIBED IN VOLUME 407, PAGE 377, THE CGAS INVESTMENT CORP. 1.04 ACRE TRACT AND 0.27 ACRE TRACT AS DEEDED AND DESCRIBED IN OFFICIAL RECORD 234, PAGE 490, TRACTS I AND II, THE C GAS INVESTMENT CORPORATION 0.18 ACRE TRACT AS DEEDED AND DESCRIBED IN OFFICIAL RECORD 234, PAGE 492, AND THE C GAS INVESTMENT CORP. 0.56 ACRE TRACT AS DEEDED AND DESCRIBED IN OFFICIAL RECORD 234, PAGE 493, WITH ALL REFERENCES BEING OF THE LOGAN COUNTY RECORDS OF DEEDS AND BEING MORE PARTICULARLY DESCRIBED AS FOLLOWS:

BEGINNING AT A RAILROAD SPIKE SET ON THE INTERSECTION OF THE CENTER-LINE OF OHIO ROUTE 366 AND THE EAST LINE OF CENTER STREET (15 FEET WIDE) PROJECTED, THE SAID RAILROAD SPIKE IS ON THE SOUTHWEST CORNER OF THE SAID 0.27 ACRE TRACT.

THENCE, WITH THE EAST LINE OF CENTER STREET, N 7°-07'-00" W, A DISTANCE OF 197.92 FEET TO A 3/4 INCH IRON ROD FOUND, PASSING A 1-1/4 INCH METAL PIPE FOUND AT 30.00 FEET.

THENCE, WITH THE LINES OF THE BEATRICE M. ARNOLD 0.80 ACRE TRACT (O.R. 186, PG. 403) THE FOLLOWING THREE COURSES:

N 81°-47'-09" E, A DISTANCE OF 133.95 FEET TO A 3/4 INCH METAL PIPE FOUND.

N 7°-06'-17" W, A DISTANCE OF 260.00 FEET TO A 5/8 INCH IRON ROD SET.

S 81°-52'-34" W, A DISTANCE OF 134.00 FEET TO A 3/4 INCH METAL PIPE FOUND.

THENCE, WITH THE EAST LINE OF CENTER STREET, N 7°-07'-00" W, A DISTANCE OF 426.60 FEET TO A 5/8 INCH IRON ROD SET.

THENCE, WITH THE LINES OF THE DUNN'S POND DOCKING ASSOCIATION 0.117 ACRE TRACT (VOL. 366, PG. 621) THE FOLLOWING TWO COURSES:

N 79°-58'-00" E, A DISTANCE OF 59.30 FEET TO A 5/8 INCH IRON ROD FOUND.

N 26°-02'-00" E, A DISTANCE OF 65.03 FEET TO A POINT ON THE NORTHEAST CORNER OF THE SAID 0.117 ACRE TRACT, PASSING A 5/8 INCH IRON ROD SET AT 60.00 FEET.

THENCE, WITH THE DEEDED NORTH LINES OF THE AFORESAID 4.557 ACRE TRACT AND BEING THE SAME NORTH LINES OF A TRACT OF 1.567 ACRES BY GOVERNOR'S DEED TO MAJOR PROPERTIES, INC. IN VOLUME 368, PAGE 473, THE FOLLOWING SIX COURSES:

N 82°-17'-00" E, A DISTANCE OF 43.20 FEET TO A POINT IN THE WATER OF DUNN'S POND.

N 33°-09'-00" E, A DISTANCE OF 56.00 FEET TO A POINT IN THE WATER OF DUNN'S POND.

N 40°-27'-00" E, A DISTANCE OF 36.06 FEET TO A POINT IN THE WATER OF DUNN'S POND.

N 78°-22'-00" E, A DISTANCE OF 49.67 FEET TO A POINT IN THE WATER OF DUNN'S POND.

S 47°-34'-24" E, WITH A WESTERLY LINE OF THE PATRICIA S. BOURQUIN 0.322 ACRE TRACT (VOL. 200, PG. 457), A DISTANCE OF 184.38 FEET TO A 1 INCH IRON BAR FOUND.

N 84°-13'-54" E, WITH THE SOUTH LINE OF THE SAID 0.322 ACRE TRACT, A DISTANCE OF 24.37 FEET TO A 5/8 INCH IRON ROD FOUND.

THENCE, WITH THE WEST LINE OF THE THOMPSON & SONS DEVELOPMENT CORPORATION 0.155 ACRE TRACT (VOL. 389, PG. 509), S 4°-54'-38" E, A DISTANCE OF 223.00 FEET TO A 5/8 INCH IRON ROD SET.

THENCE, WITH THE WEST LINE OF THE T & C FARM, INC. 1.55 ACRE TRACT (O.R. 74, PG. 949, TR. 111), S 26°-24'-32" E, A DISTANCE OF 76.80 FEET TO A 1/2 INCH METAL PIPE FOUND.

THENCE, WITH THE WEST LINE OF THE T & C FARM, INC. 3.00 ACRE TRACT (O.R. 74, PG. 949, TR. 111), S 6°-57'-01" E, A DISTANCE OF 339.75 TO A 3/4 INCH METAL PIPE FOUND.

THENCE, WITH THE LINES OF THE HARRY R. BROOKS 1.06 ACRE TRACT (O.R. 86, PG. 200) THE FOLLOWING TWO COURSES:

S 81°-51'-40" W, A DISTANCE OF 199.99 FEET TO A 3/4 INCH METAL PIPE FOUND.

S 6°-56'-47" E, A DISTANCE OF 230.01 FEET TO A RAILROAD SPIKE SET, PASSING A 5/8 INCH IRON ROD SET AT 200.01 FEET.

THENCE, WITH THE CENTER-LINE OF OHIO ROUTE 366 (60' WIDE), S 81°-45'-49" W, A DISTANCE OF 209.51 FEET TO THE POINT OF BEGINNING.

CONTAINING 6.830 ACRES OF WHICH 0.144 ACRE IS WITHIN THE HIGHWAY RIGHT-OF-WAY.

THE BASIS FOR BEARINGS IS THE EAST LINE OF CENTER STREET BEING N 7°-07'-00" W, AND ALL OTHER BEARINGS ARE FROM ANGLES AND DISTANCES MEASURED IN A FIELD SURVEY BY LEE SURVEYING AND MAPPING COMPANY ON OCTOBER 23, 1995.

THIS DESCRIPTION WAS PREPARED BY JEFFREY I. LEE, PROFESSIONAL SURVEYOR 6359, ON OCTOBER 29, 1995.



ABBREVIATIONS

- CONC. CONCRETE
- R.C.P. REINFORCED CONCRETE PIPE
- E/P EDGE OF PAVEMENT
- R/W RIGHT-OF-WAY
- O.H. OVERHEAD
- U.G. UNDERGROUND
- C.T.V. CABLE TELEVISION
- ELEC. ELECTRIC
- TEL. TELEPHONE
- C.O. CLEAN-OUT

LEGEND

- 5/8" IRON ROD SET W/ PLASTIC I.D. CAP STAMPED "LEE P56359"
- 5/8" IRON ROD FOUND
- 3/4" IRON ROD FOUND
- 3/4" METAL PIPE FOUND
- 1 1/4" METAL PIPE FOUND
- 1" IRON BAR FOUND
- 1/2" METAL PIPE FOUND
- RAILROAD SPIKE SET
- P.K. NAIL W/ SHINER FOUND
- CONCRETE R/W MONUMENT FOUND
- 3/4" SQUARE IRON BAR FOUND
- UTILITY POLE
- GUY WIRE
- MAILBOX
- ELECTRIC METER
- ELECTRIC PEDESTAL
- ELECTRIC TRANSFORMER BOX
- TELEPHONE PEDESTAL
- CABLE T.V. PEDESTAL
- STORM SEWER CATCH BASIN
- SANITARY SEWER MANHOLE
- SANITARY SEWER CLEAN-OUT
- GAS VALVE
- U.G. GAS LINE WARNING SIGN
- GAS METER
- LIGHT POLE
- WATER VALVE
- YARD LIGHT

NOTES

EASEMENTS SHOWN ON THIS MAP OR REFERRED TO BY ADDITIONAL DOCUMENTS ARE BASED UPON CENTRAL CITY TITLE AGENCY, INC. COMMITMENT NUMBER CC1512/9509011-CCT DATED SEPTEMBER 25, 1995 AT 8:30 AM, AND ENDORSEMENTS 1 AND 2 DATED OCTOBER 12, 1995, AND OCTOBER 19, 1995 RESPECTIVELY. THE SURVEYOR HAS MADE NO OTHER SEARCH FOR EASEMENTS AFFECTING THIS PREMISES.

LEE SURVEYING AND MAPPING COMPANY'S OHIO UTILITIES PROTECTION SERVICE NUMBER FOR THIS PROJECT IS 101900206.

THE UNDERGROUND UTILITIES SHOWN HAVE BEEN LOCATED FROM FIELD SURVEY INFORMATION AND EXISTING DRAWINGS. THE SURVEYOR MAKES NO GUARANTEE THAT THE UNDERGROUND UTILITIES SHOWN COMPRISE ALL SUCH UTILITIES IN THE AREA, EITHER IN SERVICE OR ABANDONED. THE SURVEYOR FURTHER DOES NOT WARRANT THAT THE UNDERGROUND UTILITIES SHOWN ARE IN THE EXACT LOCATION INDICATED, ALTHOUGH HE DOES STATE THAT THEY ARE LOCATED AS ACCURATELY AS POSSIBLE FROM INFORMATION AVAILABLE. THE SURVEYOR HAS NOT PHYSICALLY LOCATED THE UNDERGROUND UTILITIES.

THE SURVEYOR HAS NO INFORMATION RELATING TO BURIED FUEL OR STORAGE TANKS, RUBBISH PITS, SLOUGHS, SPRINGS, FILLED IN WELLS OR CISTERNS OR SEEP HOLES AND MAKES NO WARRANTY REGARDING THE EXISTENCE OR ABSENCE OF ANY OF THEM.

THE USE OF THE WORD "CERTIFY" ON THIS PLAT IS PER THE DEFINITION CONTAINED IN O.R.C. 4733 AT THE TIME OF THIS SURVEY.

THE 4.557 ACRE TRACT IS SUBJECT TO A NON-EXCLUSIVE 10 FEET WIDE EASEMENT(S) OF UNKNOWN LOCATION TO DAYTON POWER AND LIGHT CO. IN VOL. 394, PG. 984; VOL. 397, PG. 986; SEE, ALSO LOGAN COUNTY RELEASE RECORD VOL. 29, PP. 327-329 FOR DISPOSITION OF SOME OF THESE EASEMENTS.

OFF-SITE SEWER EASEMENTS NOT SHOWN ARE FOUND IN VOL. 390, PG. 983; VOL. 391, PG. 247; VOL. 390, PG. 985; VOL. 397, PG. 26; VOL. 397, PG. 984; VOL. 397, PG. 986; SEE, ALSO LOGAN COUNTY RELEASE RECORD VOL. 29, PP. 327-329 FOR DISPOSITION OF SOME OF THESE EASEMENTS.

SICKLES DITCH WAS RE-ROUTED IN OCTOBER, 1981, BY PERMISSION OF THE LOGAN COUNTY ENGINEER. LETTER ON FILE WITH LEE SURVEYING AND MAPPING CO.

ALTA/ACSM LAND TITLE SURVEY OF THE LEADER DEVELOPMENT PROPERTIES, INC. AND CGAS INVESTMENT CORPORATION 6.830 ACRE TRACT VOLUME 407, PAGE 377, OFFICIAL RECORD 234, PAGE 493 OFFICIAL RECORD 234, PAGE 490, TRACTS I AND II, AND OFFICIAL RECORD 234, PAGE 492 VIRGINIA MILITARY SURVEY 9925-9946-10121 WASHINGTON TOWNSHIP LOGAN COUNTY, OHIO

TO DANIEL E. DEMMY, NELSON D. WENRICK, CENTRAL CITY TITLE AGENCY, INC. AND CHICAGO TITLE INSURANCE COMPANY:

THIS IS TO CERTIFY THAT THIS MAP OR PLAT AND THE SURVEY ON WHICH IT IS BASED WERE MADE IN ACCORDANCE WITH "MINIMUM STANDARD DETAIL REQUIREMENTS FOR ALTA/ACSM LAND TITLE SURVEYS," JOINTLY ESTABLISHED AND ADOPTED BY ALTA AND ACSM IN 1992, AND INCLUDES ITEMS 1, 3, 4, 7(A), 8, 10, 11 AND 13 OF TABLE A THEREOF, AND PURSUANT TO THE ACCURACY STANDARDS (AS ADOPTED BY ALTA AND ACSM AND IN EFFECT ON THE DATE OF THIS STATEMENT) OF AN URBAN SURVEY.

THE PREMISES SHOWN HEREON ARE IN FLOOD ZONE "C," (AREA OF MINIMAL FLOODING) AND FLOOD ZONE "A," (AREAS OF 100 YEAR FLOOD: BASE FLOOD ELEVATION IS 998.0 FEET NATIONAL GEODETIC VERTICAL DATUM OF 1929) PER A LETTER OF MAP REVISION, DATED SEPTEMBER 2, 1986, OFFICIALLY AMENDING THE NATIONAL FLOOD INSURANCE RATE MAP 390772 0025 C, DATED MAY 15, 1985.

JEFFREY I. LEE
REGISTERED PROFESSIONAL SURVEYOR
OCTOBER 23, 1995

COPYRIGHT 1995 BY:
LEE SURVEYING & MAPPING CO.
143 East Columbus Avenue
BELLEFONTAINE, OHIO 43311
(513) 593-7355

D 269 TREASURE L-768-1

2 WORKING DAYS
BEFORE YOU DIG
CALL TOLL FREE 800-362-2764
OHIO UTILITIES PROTECTION SERVICE

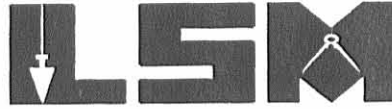


RD 3-14-02 SM OK

Lee Surveying and Mapping Co., Inc.

Land Surveys • Topography • Subdivisions • Construction Layout

117 N. Madriver St.
Bellefontaine OH 43311



Phone: (937) 593-7335
Fax: (937) 593-7444

SNUG HARBOR CONDOMINIUMS 0.608 ACRE

Lying in Virginia Military Survey 9925-9946-10121, Washington Township, Logan County, Ohio.

Being out of the Snug Harbor Condominium at Dunn's Pond Association 6.830 acre tract as deeded and described in Official Record 424, Page 661 and amended in Official Record 446, Page 20; Official Record 500, Page 166; Official Record 521, Page 479; and Official Record 522, Page 695 of the Logan County Records of Deeds and recorded in Plat Cabinet B, Slides 72B through 73B of the Logan County Records of Plats and being more particularly described as follows:

Beginning at a railroad spike set at the intersection of the east line extended of Center Street (15 feet wide) and the center-line of Ohio Route 366 (60 feet wide), on the southwest corner of the said 6.830 acre tract.

THENCE, with the east line of Center Street, N 7°-07'-00" W, a distance of 197.92 feet to a 3/4 inch iron rod found, passing a 3/4 inch iron pipe found at 30.00 feet.

THENCE, with the south line of the Beatrice M. Arnold 0.80 acre tract (O.R. 186, Pg. 403), N 81°-47'-09" E, a distance of 133.95 feet to a 3/4 inch iron pipe found.

THENCE, S 7°-07'-00" E, a distance of 197.86 feet to a MAG nail set, passing a 5/8 inch iron rod set at 167.86 feet.

THENCE, with the center-line of Ohio Route 366, S 81°-45'-49" W, a distance of 133.91 feet to the point of beginning.

Containing 0.608 acre, of which 0.144 acre is within the highway right-of-way.

The basis for bearings is the east line of Center Street, being N 7°-07'-00" W, and all other bearings are from angles and distances measured in a field survey by Lee Surveying and Mapping Co., Inc. on March 8, 2002.

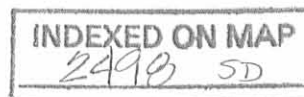
Description prepared by:



ORIGINAL STAMP IN GREEN

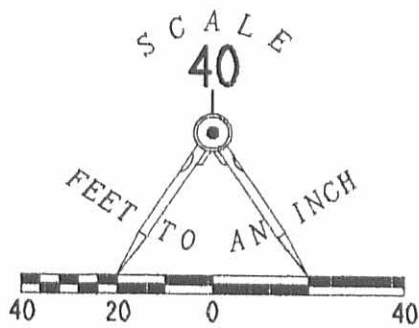
Jeffrey I. Lee
Jeffrey I. Lee
Professional Surveyor 6359
March 12, 2002

L-768



SNUG HARBOR CONDOMINIUM
AT DUNN'S POND
AMENDMENT NUMBER 3

DUNN'S POND ALLOTMENT
PLAT CABINET A, SLIDE 181



- 5/8" IRON ROD SET W/ PLASTIC I.D. CAP STAMPED "LEE PS6359"
- ⊕ 3/4" IRON ROD FOUND
- 3/4" IRON PIPE FOUND
- ⊕ RAILROAD SPIKE SET
- MAG NAIL SET

BEATRICE M. ARNOLD
0.80 ACRE
O.R. 186, PG. 403

N 81° 47' 09" E
133.95'

0.608 ACRE
OF WHICH 0.144 ACRE IS WITHIN
THE HIGHWAY RIGHT-OF-WAY

CENTER STREET (15')

N 07° 07' 00" W (BASIS FOR BEARINGS)

197.92'

197.86'

S 07° 07' 00" E

366 (60' WIDE)

133.91'
S 81° 45' 49" W

DECLARATION AND AMENDMENTS

- O.R. 424, PG. 661
- O.R. 446, PG. 20
- O.R. 500, PG. 166
- O.R. 521, PG. 479
- O.R. 522, PG. 695

SURVEY OF 0.608 ACRE OUT OF THE
SNUG HARBOR CONDOMINIUM AT DUNN'S POND
ASSOCIATION 6.830 ACRE TRACT
PLAT CABINET B, SLIDES 72B-73B
OFFICIAL RECORD 424, PAGE 661
VIRGINIA MILITARY SURVEY 9925-9946-10121
WASHINGTON TOWNSHIP
LOGAN COUNTY, OHIO



SURVEYED BY:

[Signature]
JEFFREY I. LEE
PROFESSIONAL SURVEYOR 6359
MARCH 8, 2002

COPYRIGHT 2002 BY:

LEE SURVEYING & MAPPING CO., INC.
117 North Madriver Street
BELLEFONTAINE, OHIO 43311
(937) 593-7335

2 WORKING DAYS
BEFORE YOU DIG
CALL TOLL FREE **800-362-2764**
OHIO UTILITIES PROTECTION SERVICE.

INDEXED ON MAP
2498 SP

ORIGINAL STAMP IN GREEN

D269 TREASN15 (TREASNUG.DAT) L-768-1