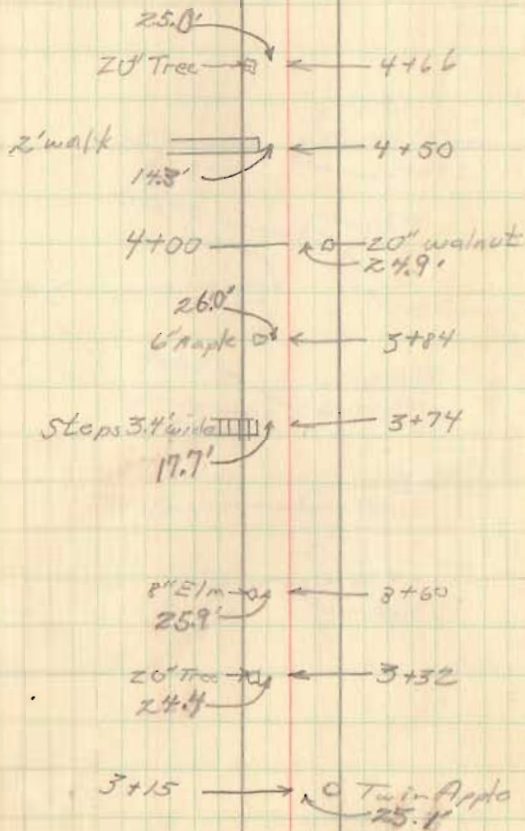


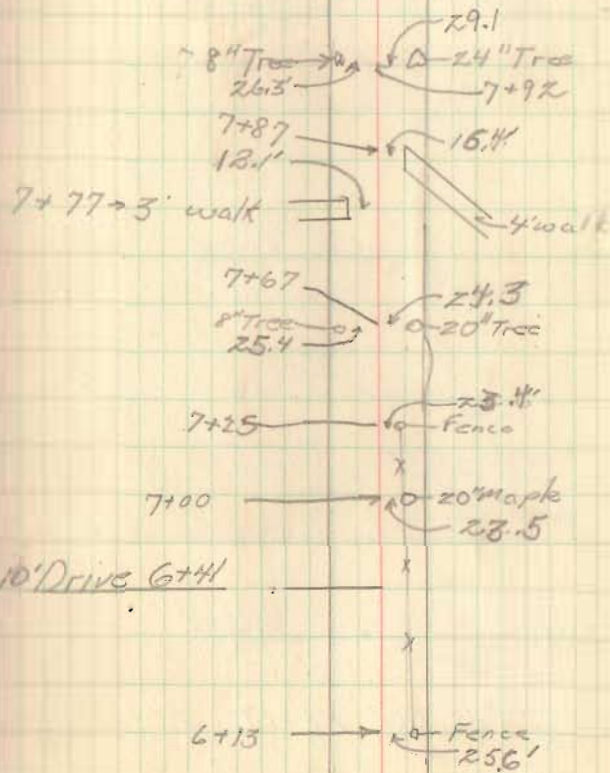
FB 692

Rd #54

R. Hellen St 5+36



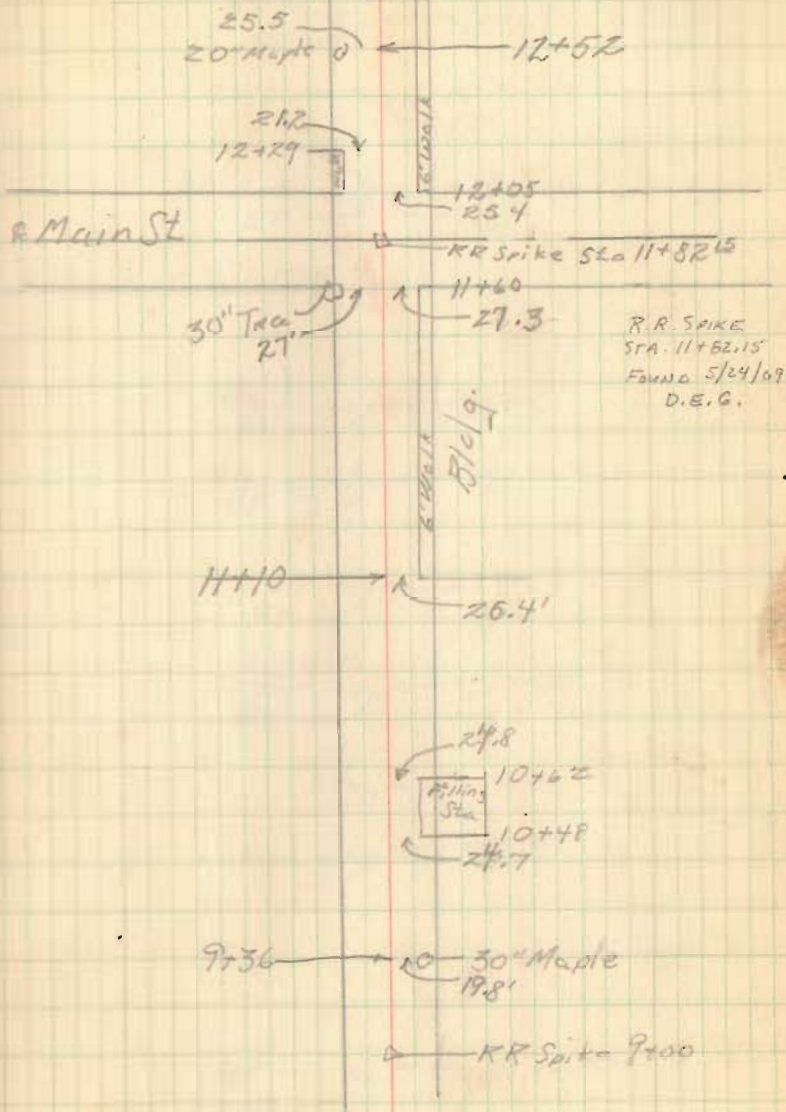
Williams St 8+22



FB 692

Rd 454

9



9+00 Huber Sec 30' RL+LL

30" Tree - 0) ← 16+24
 26.7'
 15+98 — 10-12" Maple
 25'
 15+83 — 20" Maple — 0) ← 10-16" Maple
 27' — 25'

E Elbridge St 15+13

10" Maple — 0) ← 15+15
28'

24" Maple — 0) ← 15+04
28'

10" Maple — 0) ← 14+80
28'

30" Maple — 0) ← 14+60
27'

12" Tile Drain — 0) ← 14+55
21'

30" Maple — 0) ← 14+45
27'

15+86 — 10" Tile Drain filter
21.2'

24" Maple — 0) ← 13+29
22.9'

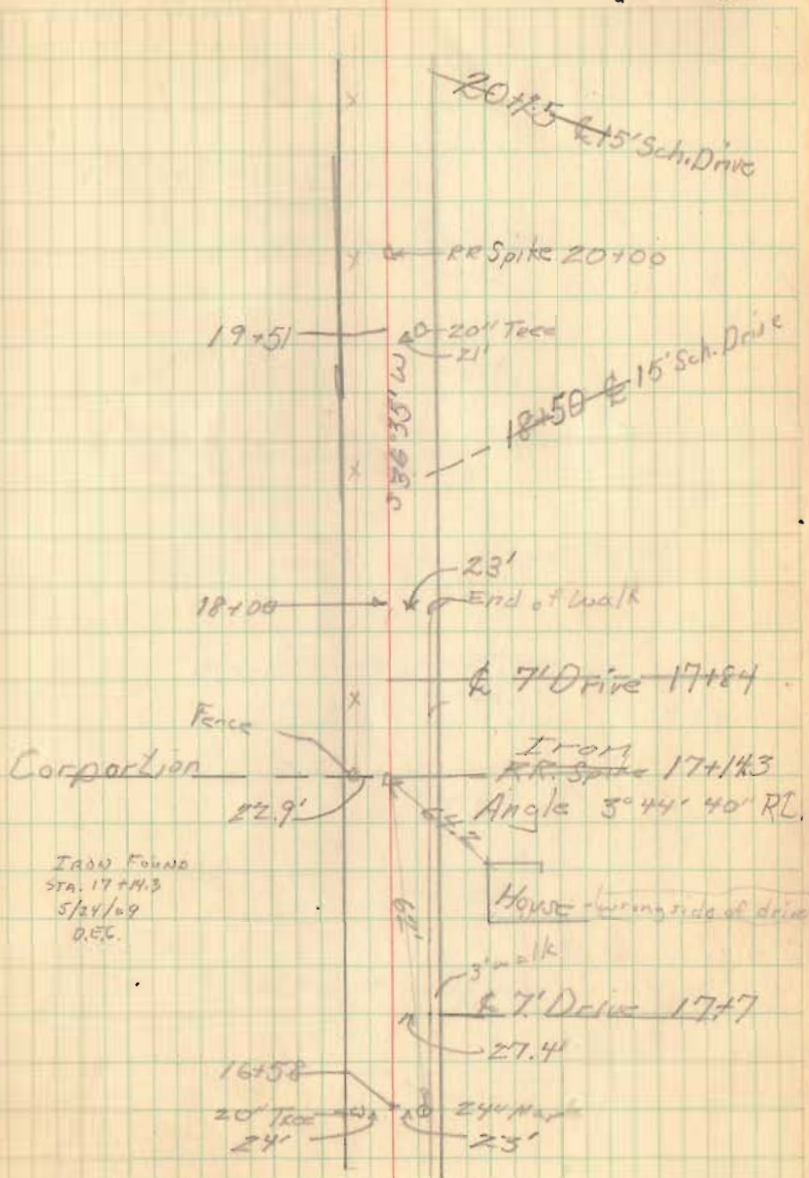
a 3' walk on the Rd.

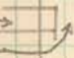
FB 692

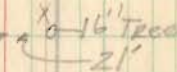
Rd #54

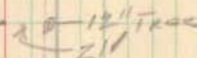
20+00 Hubs Set 30' RL + LI

11

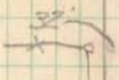
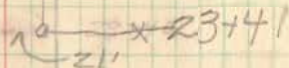


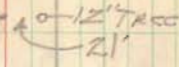
24+26 R3 Walk → 

24+20 → 

23+94 → 

23+81 → 

Fence  

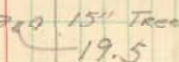
23+10 → 

22+30 → 

22+2 → 

21+13 → 

20+77 → 

20+48 → 

FB 692

Rd 54

PT. 31+96² Hub Set 30' RL + LT

PC. 30+99⁶ Hub Set 30' RL

POT 29+78⁹ Hubs Set 30.3' RL + LT

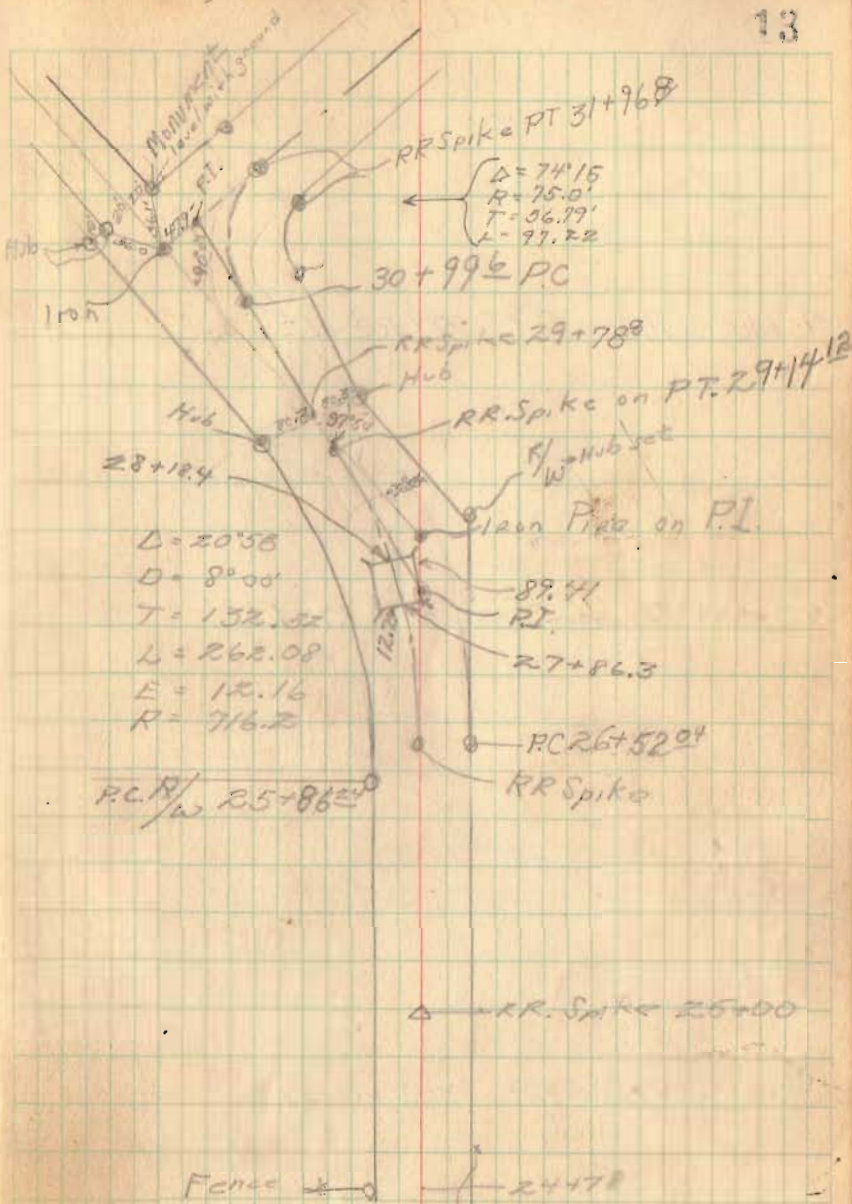
PC. 26+57^{0*} Hub Set 30' RL

PC. 25+91²⁴ R/W Hub Set 30' LT

25+00 Hubs Set 30' RL + LT

June 15, 50

13



FB 692

Rd #54

45+00 Hubs Set 30' RL+LT
o o

40+00 Hubs Set 30' RL+LT
o o

35+00 Hubs Set 30' RL+LT.
o o

14

L. BRUNSON
x x 49+48

W.H. Hurless

RR Spike 45+00

42+94 E. Drive (10' wide)

88' 63" W

RR Spike 42+00

Culvert
widened
4-54

12' 6" 39+69.6

12' 6" 39+34.4

12' 6" 39+00

RR Spike 35+00

FB 692

RL 54

60+00 Hubs Set 30' RL+LL.

55+00 Hubs Set 30' RL+LT
0 0

50+00 Hubs Set 30' RL+LL.

15

Chas C. Lafue
~~Corry Van Gorder~~

Rc/215

Corry Van Gorder

50+81

Noah Truar 5'

S 29° 57' W

RR Spike 60+00

Angle 0° 04 1/2' RL
Stone 57+56 1/2 (See book 571)

Raymond R.R. + Altar

St. Brunson

56+10 & 15' Drive

RR Spike 55+00

RR Spike 50+00

FB 692

Rd #54

PT. 75+78 ⁵¹	43° 01.5' Lt	Hybr Set
+50	34° 26'	56.76
+25	26° 56'	26.1
75	19° 26'	66.55
+75	11° 56'	41.4
+50	4° 26'	15.4
PC 74+35 ¹³	0-00	Hubs Set

PT 73+35.8	45° 10' RL	Hubs Set
73	42° 39.5'	
+50	39° 09.5'	
72	35° 39.5'	
+50	32° 09.5'	
71	28° 39.5'	
+50	25° 09.5'	
70	21° 39.5'	
+50	18° 09.5'	
69	14° 39.5'	
+50	11° 09.5'	
68	7° 39.5'	
+50	4° 09.5'	
67+00	0° 39.5'	
PC 66+90.6	0-00	Hubs Set

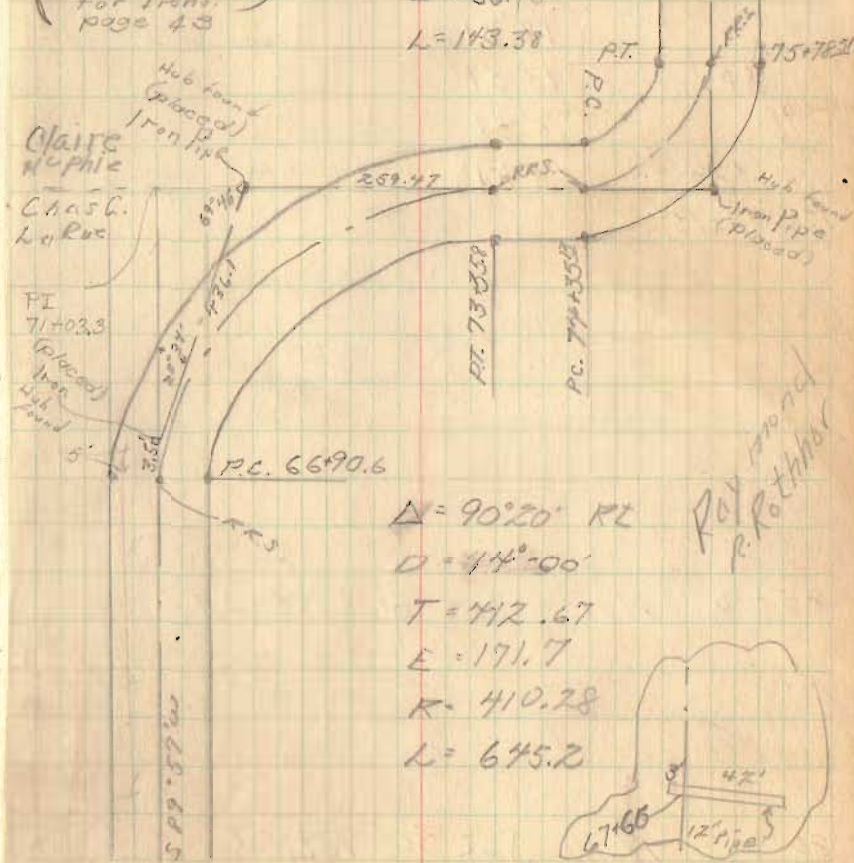
June 19, 50

18

These Curves changed
Aug., 53; See
page 61.

(Sea Field Book)
571
for Trans.
page 43

$\Delta = 86^{\circ} 03' \text{ Lt}$
 $D = 60^{\circ} 00'$
 $T = 93.33$
 $R = 100$
 $E = 36.76$
 $L = 143.38$



Raymond
P. Rothman

PT 14 + 18' Hubs Set 30' RT + LT

116 + 00 Hubs 30' RT + LT

105 + 00 Hubs 30' RT + LT



Rd #54

FB 692

June 22, 50

20

RRS. Sta 123+56.7

116.7'

Iron
Sta 122+40
Angle ~~28° 07'~~
13° 51' 40" RL

234.0'

RRS. Sta 120+00
Angle 4° 22' RL

Robt. Cummins

Ella F. Plum

171.6'

RRS. Sta. 118+58.4
Angle 6° 05' SE

Miami

75.75'

75.75'

RRS. Sta 117+75.4
Angle 3° 00' LT

118+58.4 RRS. on End of Bridge

117+75.4 RRS. Beginning of Bridge

FB 692

Rd 54 +60

PT 130+52^E Hubs Set 25' RT+LT.

PC 129+61^E Hubs Set 25' RT+LT

21

$D = 48^{\circ}46' \text{ LT.}$

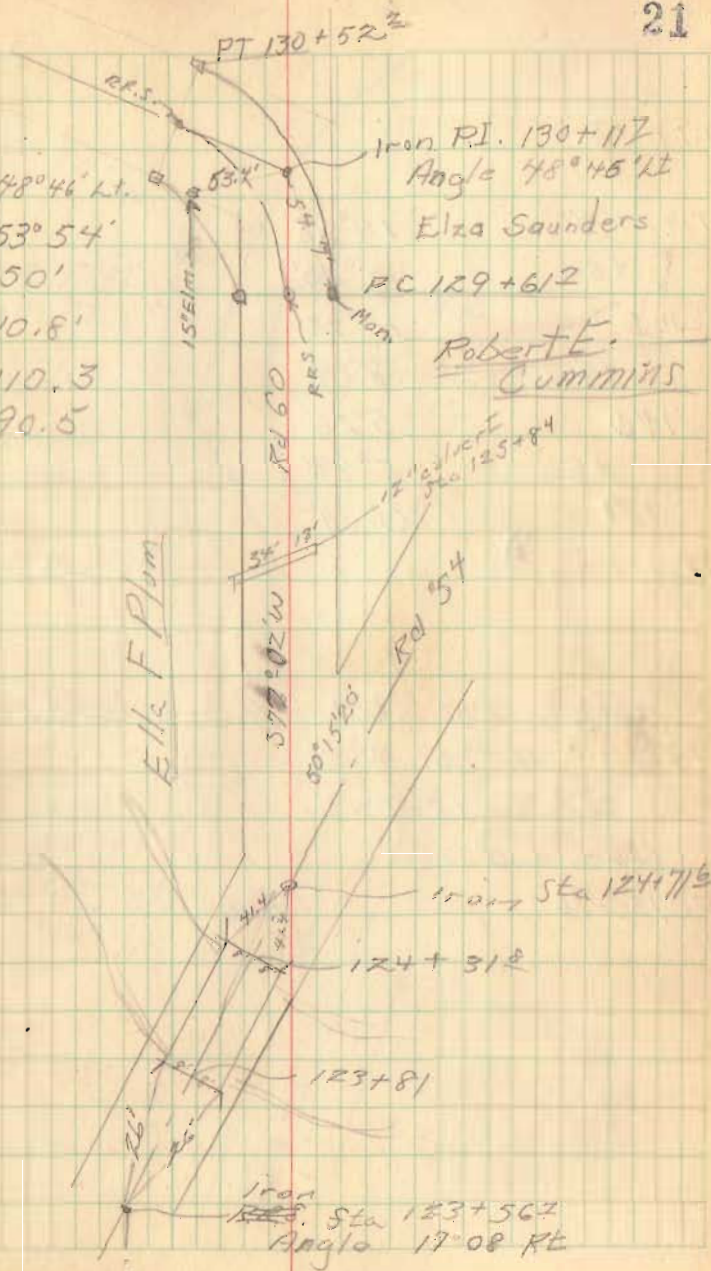
$D' = 53^{\circ}54'$

$T = 50'$

$E = 10.8'$

$R = 110.3$

$L = 90.5$



FB 692

Rd 60

PT 141 + 73 ^R	14° 31' 5"
+50	13° 20'
141	10° 42'
+50	8° 04'
140	5° 26'
+50	2° 47'
139	0° 09'

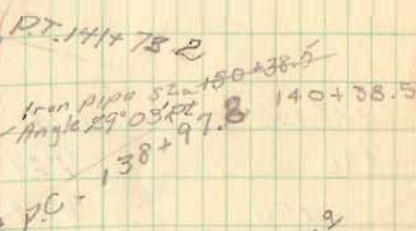
PC 138 + 97^B Hubs Set 25' RL

PT 137 + 32 ^R	17° 07'	82.9'	Hubs Set 25' RL + LT
137	13° 06'	50.3'	
+50	6° 45'	54.3'	
136	0° 30'		

PC 135 + 96 Hubs Set 25' RL + LT

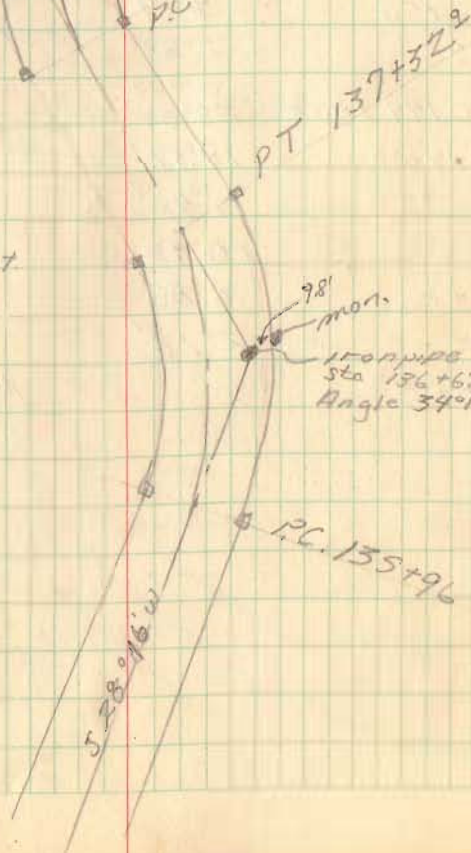
$\Delta = 29^{\circ} 03' RL$
 $D = 10^{\circ} 33'$
 $T = 140.1'$
 $E = 18.4'$
 $R = 543.86'$
 $L = 275.4'$

Mon.



$\Delta = 34^{\circ} 14' LT$
 $D = 25^{\circ}$
 $T = 71.0'$
 $E = 11.4'$
 $R = 231.01'$
 $L = 136.9'$

98'
 Mon.
 Iron pipe
 Sta 136 + 67
 Angle 34° 14' LT



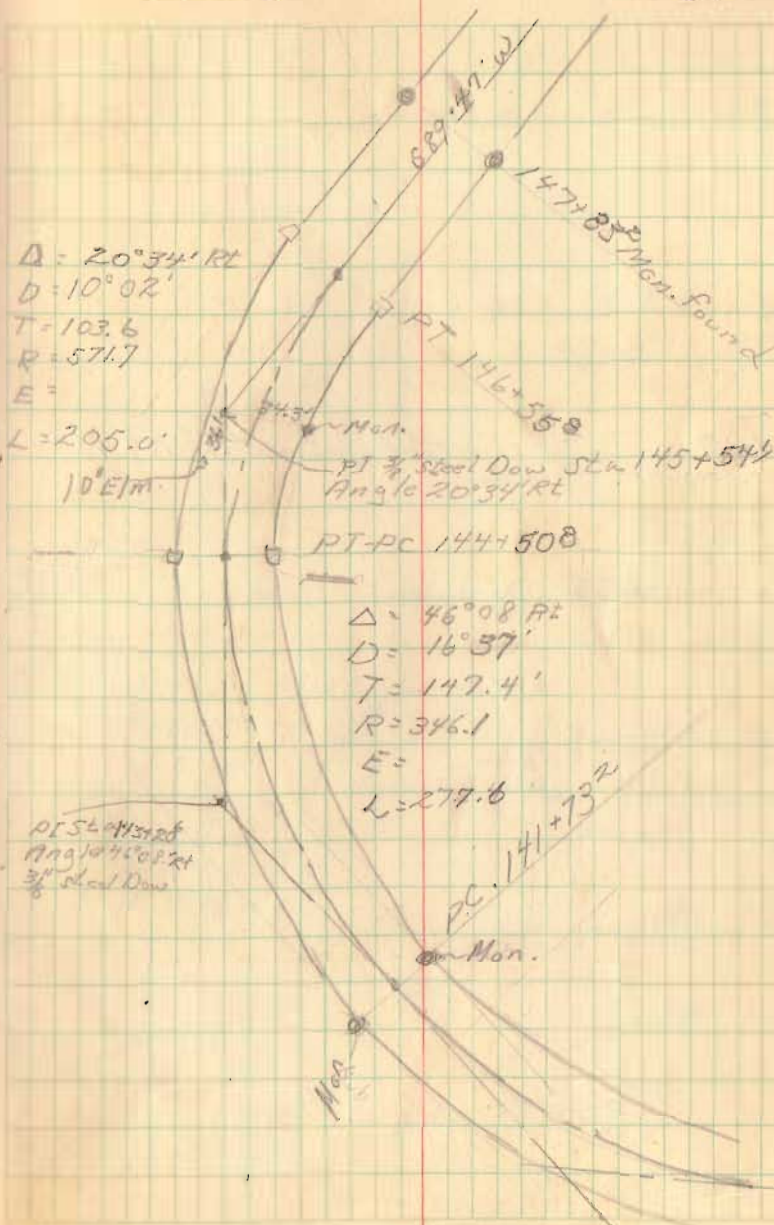
Rd #60

FB 692

PT 146+55 ^B	10°17' RL	Hubs Set
146	7°29'	
+50	4°59'	
145	2°28'	
	0°-00'	
PT-PC 144+50 ^B	23°04'	Hubs Set
144+00	18°51'	
+50	14°42'	
143	10°32'	
+50	6°23'	
142	2°13'	
PC 141+73 ^B	2	Monuments found

June 23, 50

23



FB 692

Rd 60

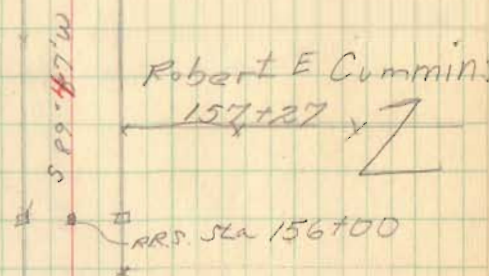
156+00

Hub Set 75' R4+14.

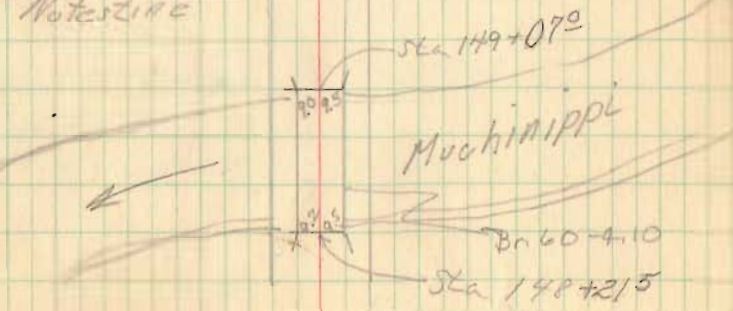
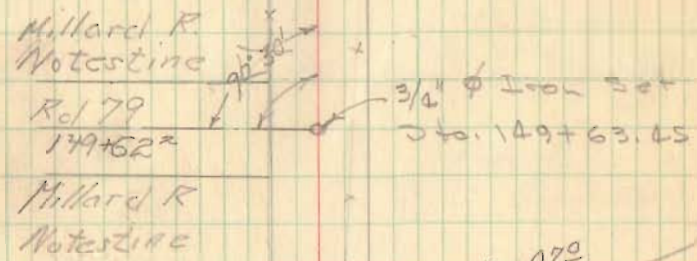
Sta.	Dist	
149+54.1	410.0	411.25
149+62.2	637.8	
156+00	1027.8	

149+62.2
 42+55.8
 3 06.4
 1 03.6
 4 10.0

25' 25" Measurements 159+83

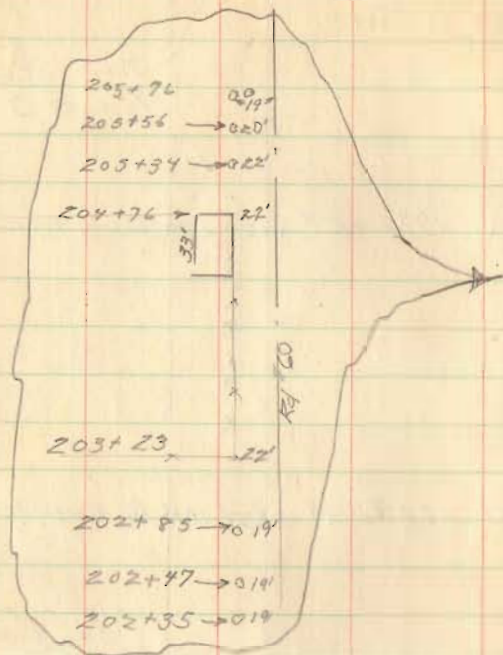


Mon. 219' 25" 151+835



Rd #60

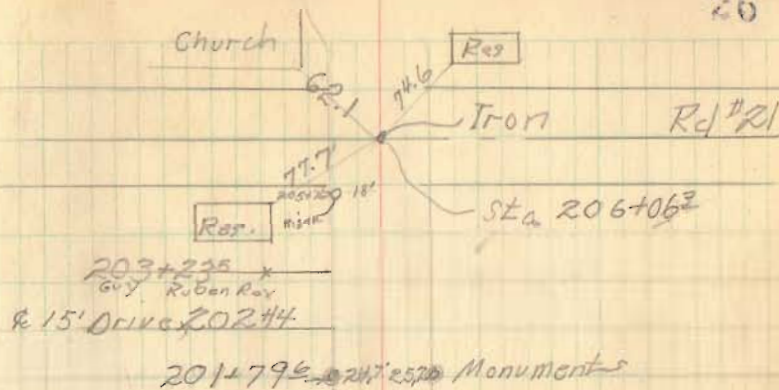
FB 692



190+00

Hubs Set 25' RL + Lt.

26



193+84.9 • 2570 Monuments

Russell Knief

x 1921 77

Ruben Guy Rex

N 55° 57' W
S 289.57' W

Guy Ruben Rex

187+60

G. Harry +
Oliver Aiken

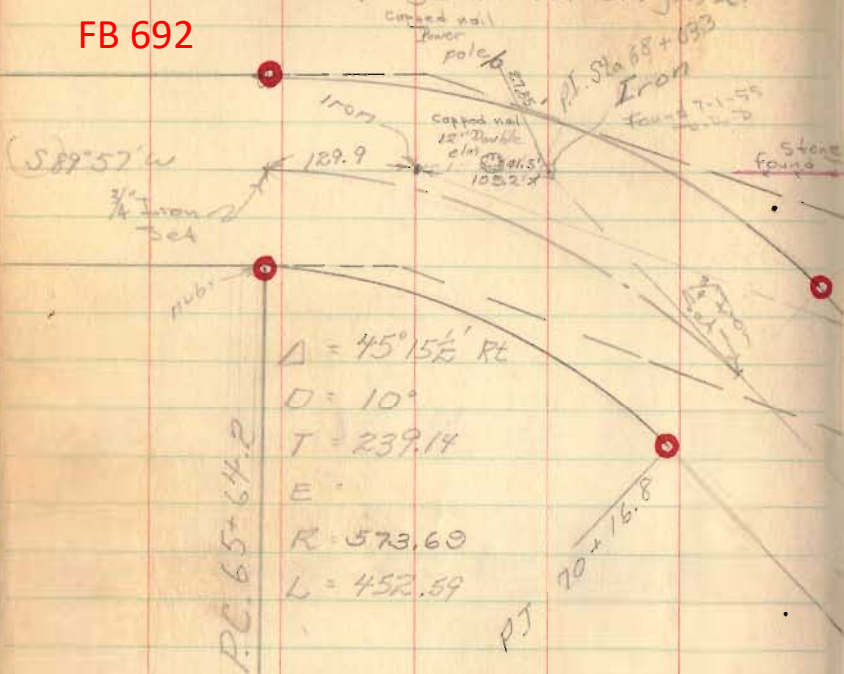
176 17'

12% culvert Sta. 187+00

185+80.4 → 243 25.16 Monuments

Rd 54 change from page 16
 See F.B. 571 page #3 for original

FB 692



PC 65+64.2	0° 0'
66	1° 47'
66+50	4° 17'
67	6° 47'
67+50	9° 17'
68	11° 47'
68+50	14° 17'
69	16° 47'
69+50	19° 17'
70	21° 47'
PT 70+16.8	22° 38'

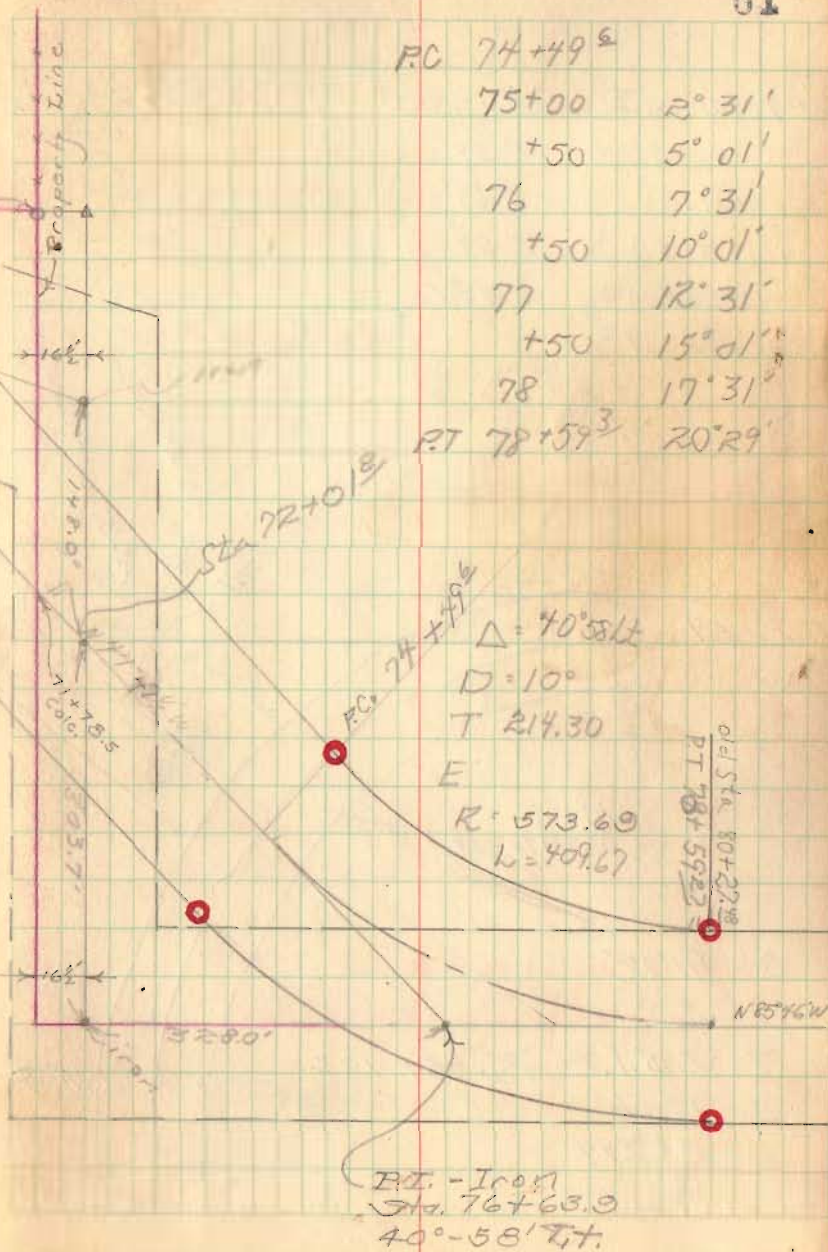
○ = R/W Monuments
 set - Oct. 1953

Profile on pg. 66

Aug 4, 53

sh/rk

61



PC 74+49.6	
75+00	2° 31'
+50	5° 01'
76	7° 31'
+50	10° 01'
77	12° 31'
+50	15° 01'
78	17° 31'
PT 78+59.3	20° 29'

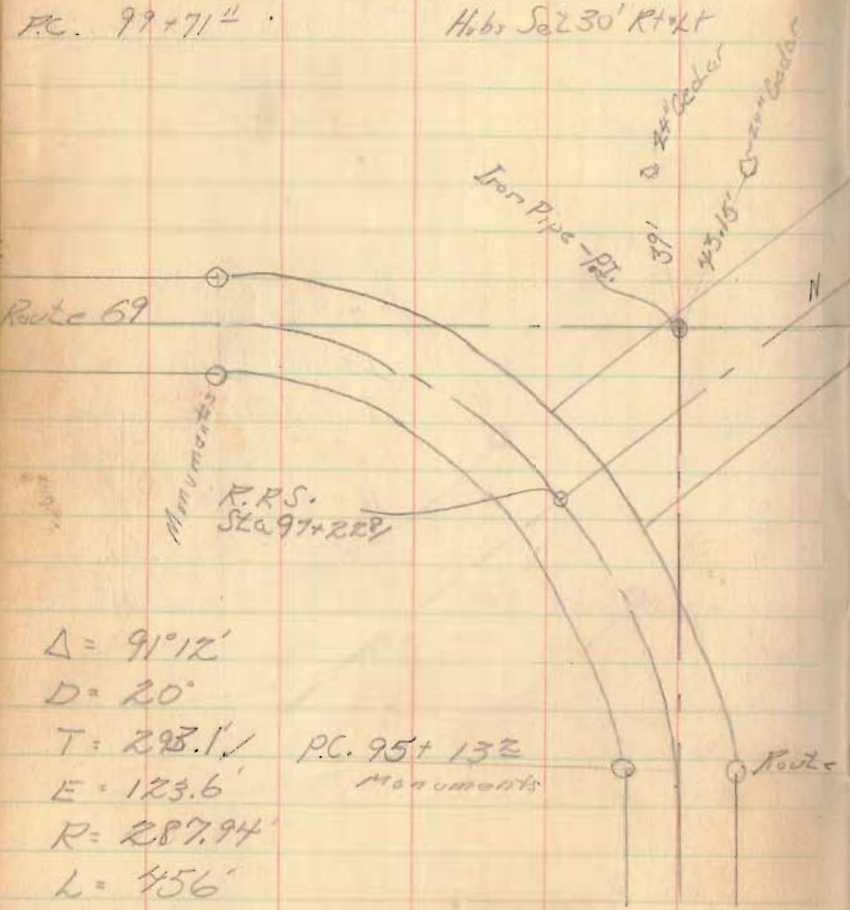
PC 74+49.6	Δ = 40° 58' 1/2
	D = 10'
	T = 214.30
	R = 573.69
	L = 409.67

PI - Iron
 Sta. 76+63.9
 40°-58' Tt.

FB 692

Rd 54 Change from pages 17+18
Void

PT 101+83.71	21° 15.375'	Hubs Set 30' RT+LT
+50	17° 53'	
101	12° 53'	
+50	7° 53'	
100+00	2° 53' LT	
P.C. 99+71.4		Hubs Set 30' RT+LT



$\Delta = 91^\circ 12'$
 $D = 20'$
 $T = 293.1'$
 $E = 123.6'$
 $R = 287.94'$
 $L = 456'$

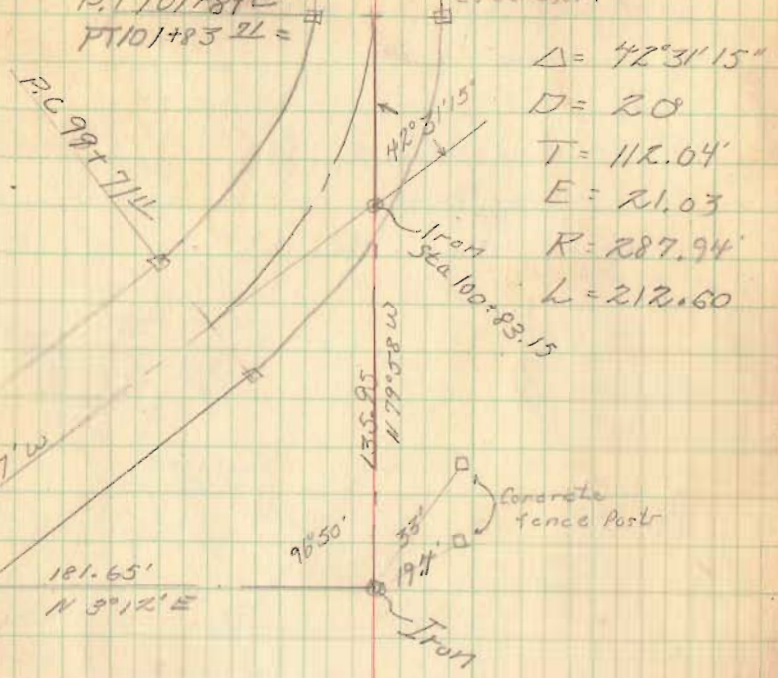
P.C. 95+132
Monuments

July 16, 50

O. Shirk
 D. Daddson
 V. D. Trick
 D. South
 Bob Heminger
 E. Cora, Jr.

52

Correction Sta.
 P.T. 101+89.10
 P.T. 101+83.71 =



$\Delta = 42^\circ 31' 15''$
 $D = 20$
 $T = 112.04'$
 $E = 21.03$
 $R = 287.94'$
 $L = 212.60$

Note:
 correction station
 P.T. 101+83.71 = 101+89.10

Note: See pg. 63 for revised survey

*69 Sta P.T. 720+02'

Relocation of C.H. # 54
at Plums Corner

FB 692

see pgs. 62 & 17-18 of this
book

Stated Nov. 4, 1953

D. I. Dodson & Tom Richardson

Snow - Temp. 25°

10
8
18.15

Corr Sta. 101+28.0
P.T. 100+52.1 =

R.R. spike
set 53

Curve Data

$\Delta = 47^{\circ} 54'$

$D = 20^{\circ}$

$R = 287.94'$

$T = 127.92'$

$L = 239.55'$

