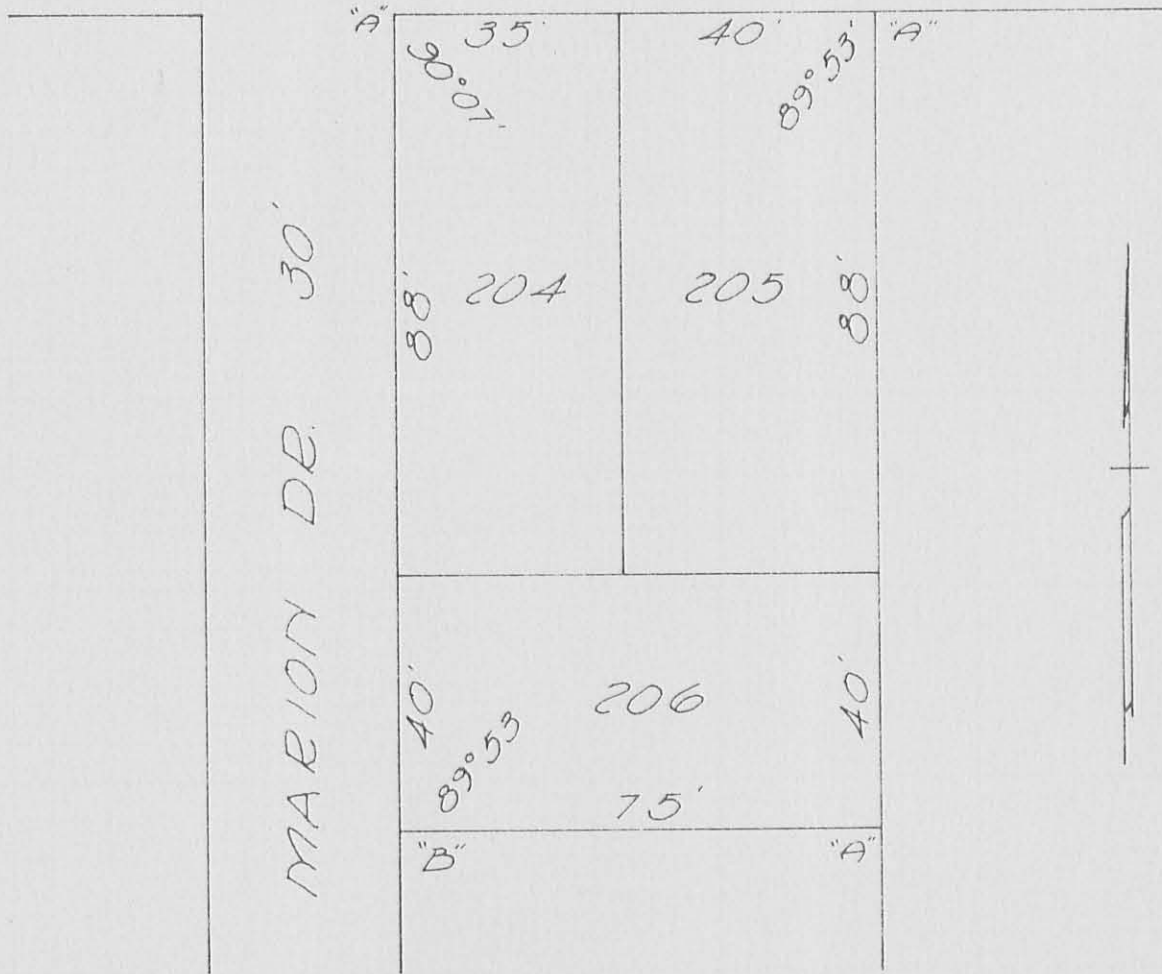


O.E. 366



A = 5/8" # Bar Set  
 B = Hub Set

REFERENCE:  
 Five Parks Allot.  
 County Eng Field  
 Book 645, pg. 73

SURVEY OF  
 LOTS 204-205-206  
 FIVE PARKS ALLOTMENT  
 WASHINGTON TOWNSHIP  
 LOGAN COUNTY, OHIO  
 JULY 14, 1962  
 SCALE 1" = 30'



3518 P

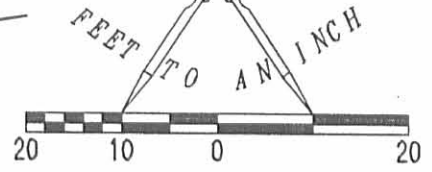
INDEXED ON MAP

*Dan L. Dodson*

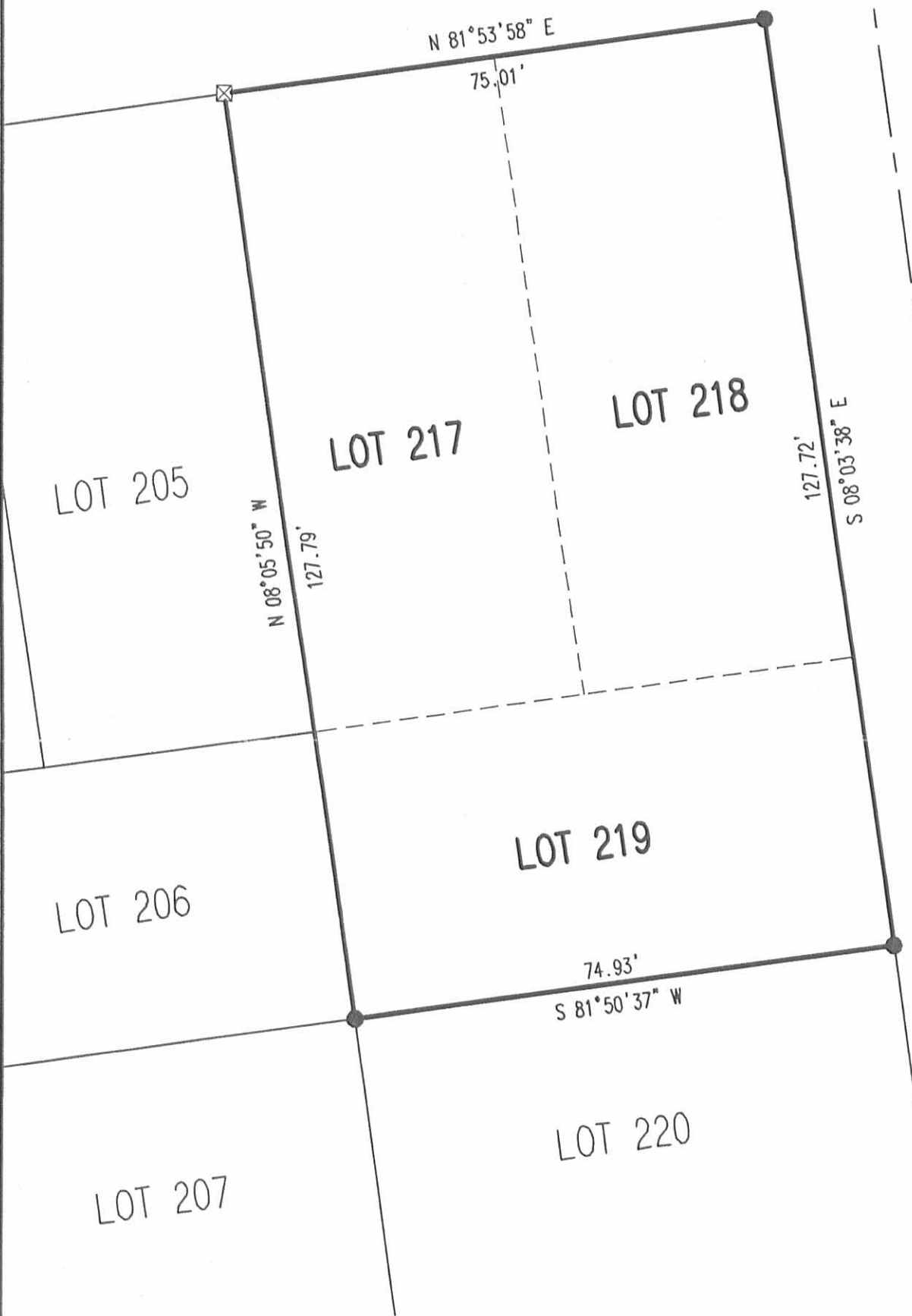
Dan L. Dodson  
 Reg. Surveyor 4270  
 Bellefontaine, Ohio  
 July 14, 1962

REC'D 5-17-06 8M/OK

SCALE  
20



366  
(74' WIDE)



LEGEND

- 5/8 INCH IRON ROD SET
- ⊠ 1/2 INCH SQUARE IRON BAR FOUND

MONTGOMERY DRIVE (30 FEET WIDE)

A RETRACEMENT SURVEY OF  
 LOTS 217, 218 AND 219  
 FIVE PARKS ALLOTMENT  
 PLAT CABINET A, SLIDE 221  
 VIRGINIA MILITARY SURVEY 9925, 9946, 10121  
 WASHINGTON TOWNSHIP  
 LOGAN COUNTY, OHIO

SURVEYED BY:

*Jeffrey I. Lee*  
 JEFFREY I. LEE  
 PROFESSIONAL SURVEYOR 6359  
 MAY 10, 2006



ORIGINAL STAMP IN GREEN

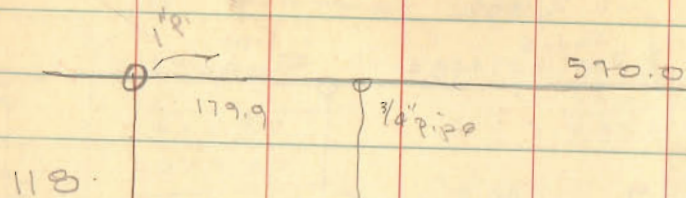
COPYRIGHT 2006 BY:  
 LEE SURVEYING & MAPPING CO., INC.  
 117 North Madriver Street  
 BELLEFONTAINE, OHIO 43311  
 (937) 593-7335

2 WORKING DAYS  
**BEFORE YOU DIG**  
 CALL TOLL FREE **800-362-2764**  
 OHIO UTILITIES PROTECTION SERVICE.

ADW D0506 4237056 L-4237056-3

INDEXED ON MAP  
3510 2P

Lot 204-205-206  
FIVE PARKS



118

179-60  
89 52  $\frac{1}{2}$   
90-07  $\frac{1}{2}$

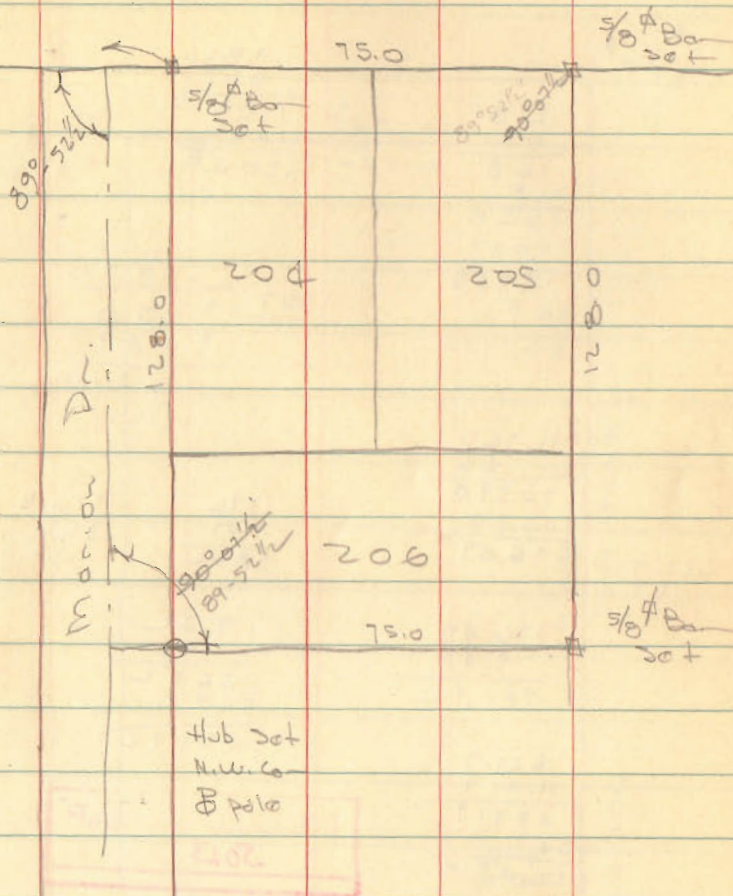
See FB 645 / 73

Dados  
Geosia

7/6/62

7/14/62

38



INDEXED ON MAP  
3518