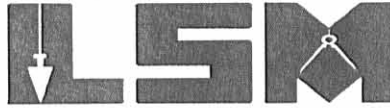


REC'D 6-16-04 SM/ak

Lee Surveying and Mapping Co., Inc.

Land Surveys • Topography • Subdivisions • Construction Layout

117 N. Madriver St.
Bellefontaine OH 43311



Phone: (937) 593-7335
Fax: (937) 593-7444

HUFFER 29.5 FEET WIDE INGRESS/EGRESS EASEMENT

Lying in Section 10, Town 2, Range 14, Washington Township, Logan County, Ohio.

Being a 29.5 feet wide ingress/egress easement through the Rex D. Huffer 12.137 acre tract (O.R. 250, Pg. 331) and the Rex D. Huffer 0.016 acre tract (O.R. 577, Pg. 874) of the Logan County Records of Deeds and being more particularly described as follows:

Beginning at a railroad spike found at the northeast corner of Section 10 on the center-line of Ohio Route 235 (60 feet wide).

THENCE, with the east line of Section 10 and the center-line of Ohio Route 235, S 00°-00'-00"E, a distance of 442.97 feet to a point at the TRUE POINT OF BEGINNING.

THENCE, with the center-line of the 29.5 feet easement, the following two courses:

N 74°-55'-46"W, a distance of 184.25 feet to a point.

N 77°-22'-03"W, a distance of 20.55 feet to a point at the terminus of this easement on the northwesterly line of the said 12.137 acre tract. Said point is referenced by a 5/8 inch iron rod found N 44°-54'-07"E, a distance of 17.74 feet and a 5/8 inch iron rod set S 44°-54'-07"W, a distance of 182.26 feet.

The basis for bearings is the east line of Section 10, being S 00°-00'-00"E, and all other bearings are from angles and distances measured in a field survey by Lee Surveying and Mapping Co., Inc. on June 19, 2002 and June 7, 2004.

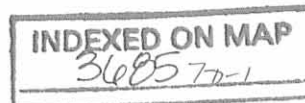
Description prepared by:



ORIGINAL STAMP IN GREEN

[Handwritten Signature]
Jeffrey I. Lee
Professional Surveyor 6359
June 7, 2004

L-2579

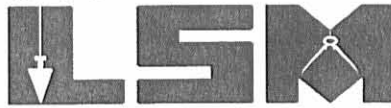


REC ID 60-16-04 SUM OK

Lee Surveying and Mapping Co., Inc.

Land Surveys • Topography • Subdivisions • Construction Layout

117 N. Madriver St.
Bellefontaine OH 43311



Phone: (937) 593-7335
Fax: (937) 593-7444

HUFFER A 30 FEET WIDE INGRESS/EGRESS EASEMENT

Lying in Section 10, Town 2, Range 14, Washington Township, Logan County, Ohio.

Being a 30 feet wide ingress/egress easement through the Rex D. Huffer 16.484 acre tract as deeded and described in Official Record 577, Page 876 of the Logan County Records of Deeds and being more particularly described as follows:

Beginning at a railroad spike found at the northeast corner of Section 10 on the center-line of Ohio Route 235 (60 feet wide).

THENCE, with the east line of Section 10 and the center-line of Ohio Route 235, S 00°-00'-00"E, a distance of 427.50 feet to a MAG nail set.

THENCE, with the south lines of the 16.484 acre tract, the following two courses:

N 74°-50'-05"W, a distance of 175.33 feet to a 5/8 inch iron rod set, passing a 5/8 inch iron rod set at 31.05 feet.

N 77°-22'-03"W, a distance of 16.62 feet to a 5/8 inch iron rod found.

THENCE, with the west line of the said 16.484 acre tract, S 44°-54'-07"W, a distance of 17.74 feet to a point at the TRUE POINT OF BEGINNING.

THENCE, with the center-line of the 30 feet wide easement, the following eleven courses:

N 82°-52'-06"W, a distance of 85.50 feet to a point.

N 73°-44'-07"W, a distance of 39.49 feet to a point.

N 71°-39'-38"W, a distance of 106.33 feet to a point.

N 76°-45'-17"W, a distance of 55.59 feet to a point.

N 79°-37'-13"W, a distance of 74.17 feet to a point.

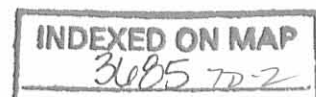
N 82°-15'-45"W, a distance of 80.85 feet to a point.

N 84°-26'-09"W, a distance of 85.31 feet to a point.

N 86°-16'-08"W, a distance of 128.04 feet to a point.

N 82°-28'-09"W, a distance of 68.53 feet to a point.

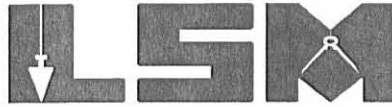
N 74°-43'-01"W, a distance of 142.47 feet to a point.



Lee Surveying and Mapping Co., Inc.

Land Surveys • Topography • Subdivisions • Construction Layout

117 N. Madriver St.
Bellefontaine OH 43311



Phone: (937) 593-7335
Fax: (937) 593-7444

N 83°-19'-32"W, 15 feet south of and parallel to the north line of the 16.484 acre tract, a distance of 376.63 feet to a point at the terminus of this easement on the east line of the remainder of the Rex D. Huffer 49.680 acre tract (O.R. 577, Pg. 870). Said point is referenced by a 5/8 inch iron rod set N 12°-48'-09"E, a distance of 15.09 feet and a 5/8 inch iron rod set S 12°-48'-09"W, a distance of 812.07 feet.

The basis for bearings is the east line of Section 10, being S 00°-00'-00"E, and all other bearings are from angles and distances measured in a field survey by Lee Surveying and Mapping Co., Inc. on June 19, 2002 and June 7, 2004.

Description prepared by:



ORIGINAL STAMP IN GREEN

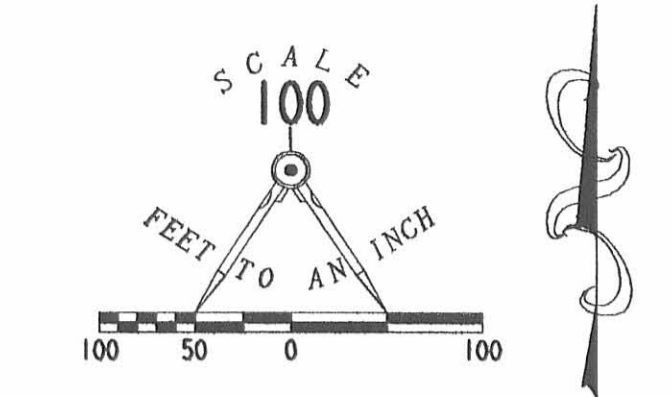
A handwritten signature in black ink, appearing to read 'J. Lee', written over the typed name and title.

Jeffrey I. Lee
Professional Surveyor 6359
June 7, 2004

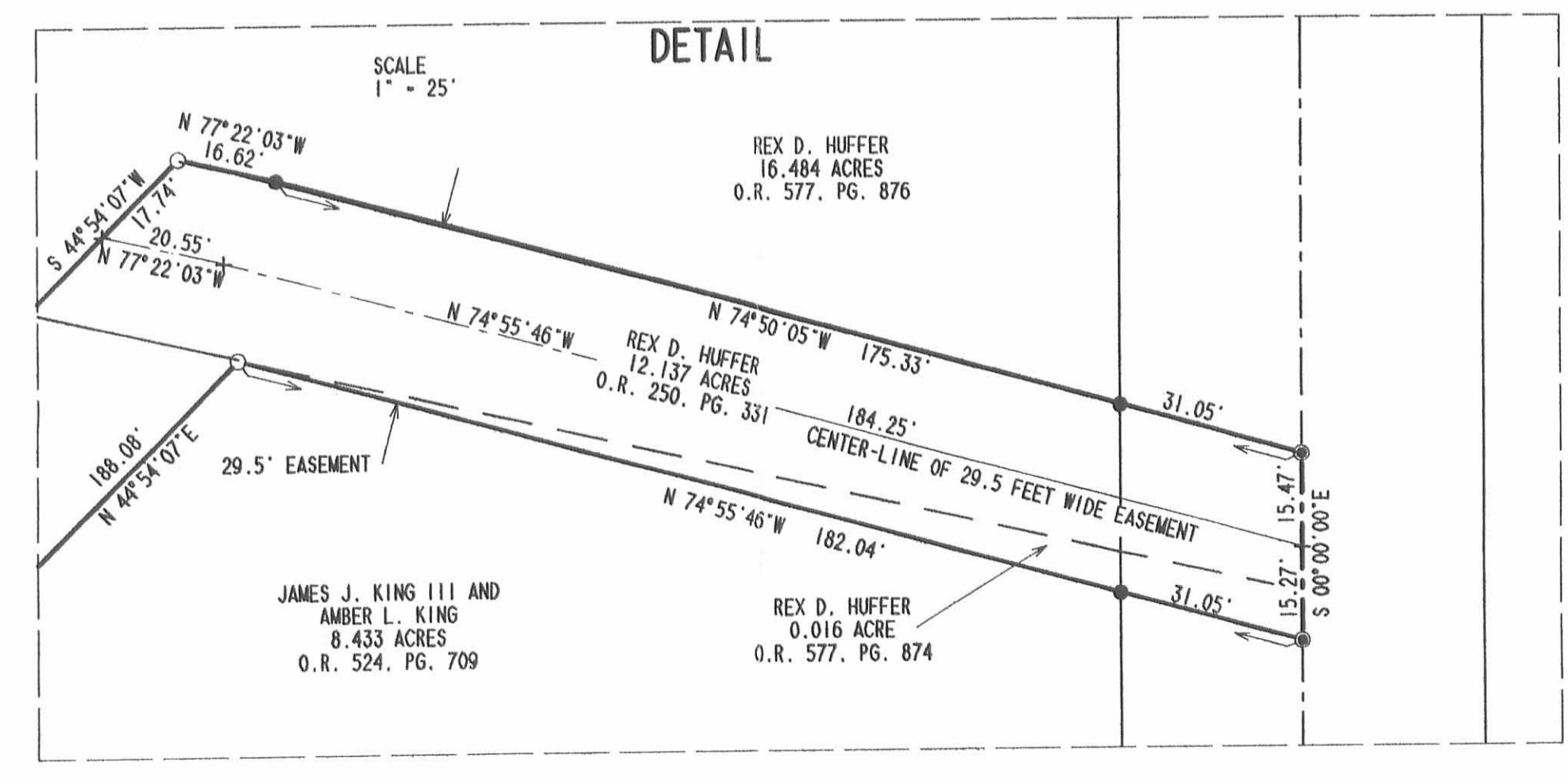
L-2579



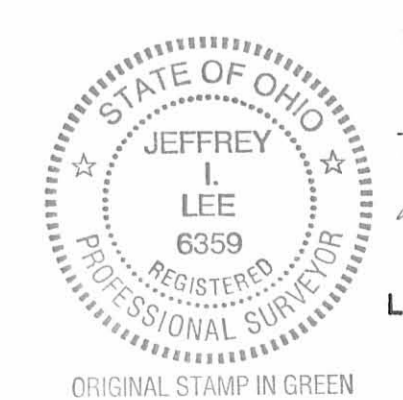
2001 D 10-16-04 SWM RL



- LEGEND
- 5/8 INCH IRON ROD SET
 - 5/8 INCH IRON ROD FOUND
 - MAG NAIL SET
 - ⊗ RAILROAD SPIKE FOUND
 - MINE SPIKE FOUND



SURVEY OF A 29.5 FEET WIDE INGRESS/EGRESS EASEMENT THROUGH THE
 REX D. HUFFER 12.137 ACRE TRACT
 OFFICIAL RECORD 250, PAGE 331
 AND THE REX D. HUFFER 0.016 ACRE TRACT
 OFFICIAL RECORD 577, PAGE 874
 AND A 30 FEET WIDE INGRESS/EGRESS EASEMENT THROUGH THE
 REX D. HUFFER 16.484 ACRE TRACT
 OFFICIAL RECORD 577, PAGE 876
 SECTION 10, TOWN 2, RANGE 14
 WASHINGTON TOWNSHIP
 LOGAN COUNTY, OHIO



SURVEYED BY:
 JEFFREY I. LEE
 PROFESSIONAL SURVEYOR 6359
 JUNE 19, 2002
 REVISED JUNE 7, 2004

COPYRIGHT 2002 BY:
 LEE SURVEYING & MAPPING CO., INC.
 117 North Medriver Street
 BELLEFONTAINE, OHIO 43311
 (937) 593-7335

INDEXED ON MAP
 2002 72

Martin Survey
 Washington Twp.
 Section 10-2-14

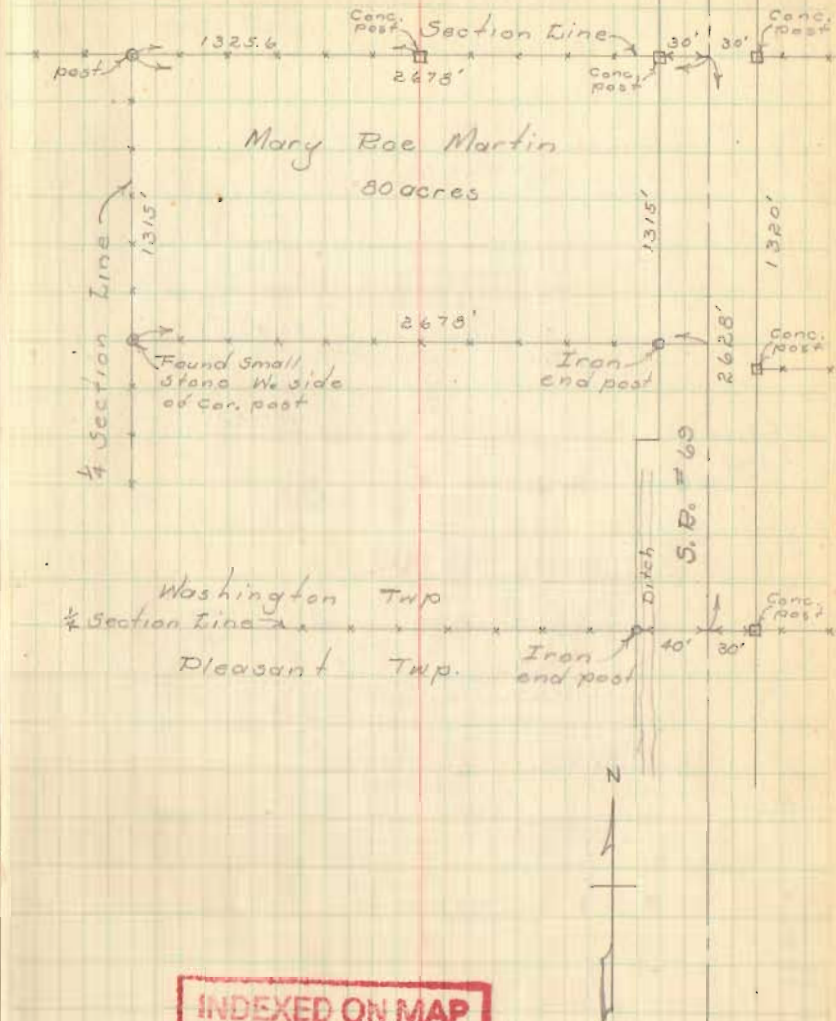
Mr. Martin thought his south line
 to be 12' in error

Measured ^{from} Martins North line - south
 to twp. line, twp. line established by
 F. F. Wright, found this dist. 12' short.
 Martin has held this distance, so
 assumed his fences to be correct.

D. L. Dodson
 O. K. Shirk

Nov. 11, 1952
 cool & clear

6



INDEXED ON MAP
 3685