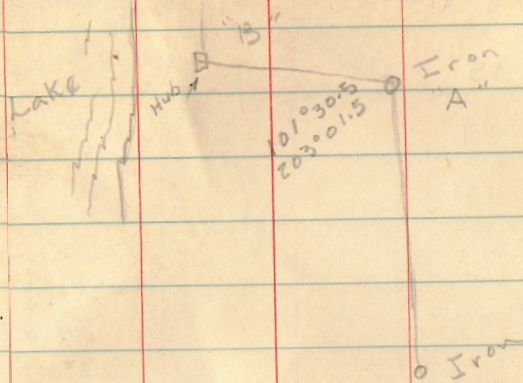


WOLF'S SURVEY

Sta.	Dist	∠	
A	186.68		3/4" pipe found @ N.
B	954.95	109° 16 1/2 218° 33'	Int Hub Set
C	193.81 1/2	49° 57' R 99° 54 1/2'	N. 30 3/4° W. Hub Set
D	500.00	113° 21' 226° 42'	Int Hub Set
E	230.50	128° 8.5' 256° 36.5'	(51° 42' Defl. Lt)
F	542.10	116° 06.5' 232° 13'	Int. (23° 53.5 Defl. Lt)
G	225.95	5° 28.5' 10° 57'	Defl. Rt. RR sale on S.R.



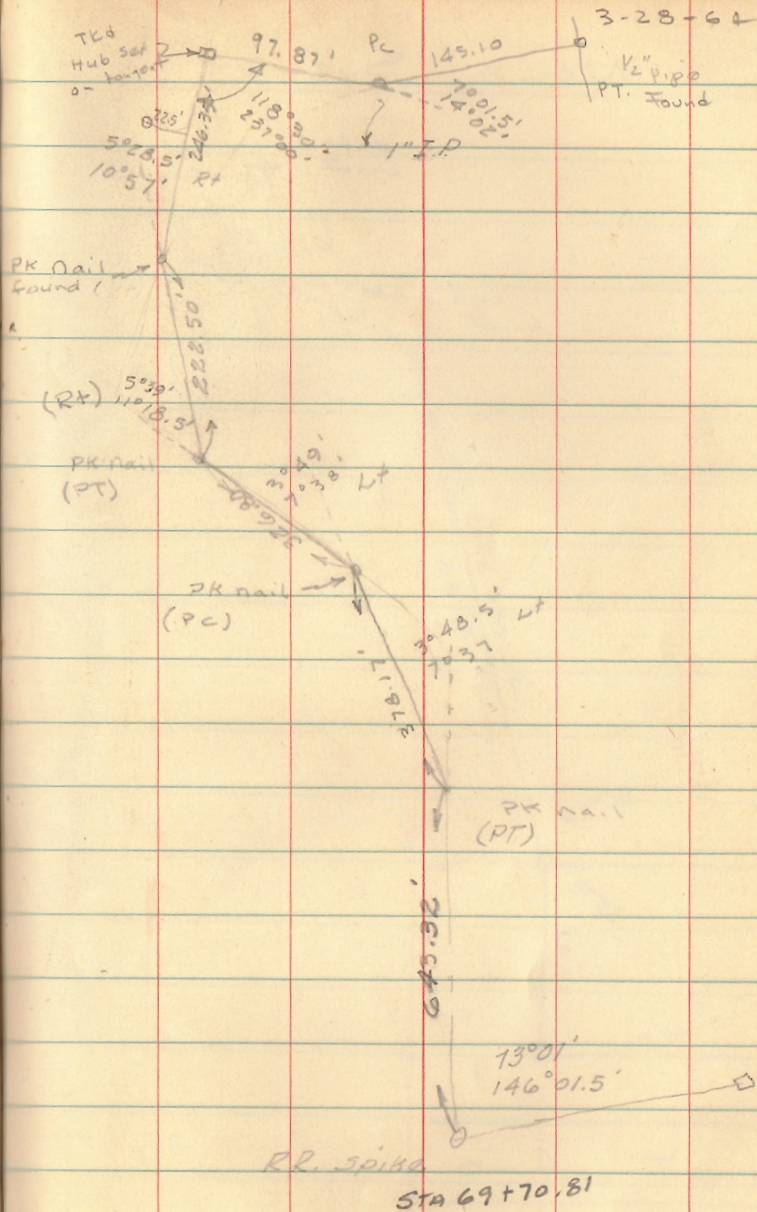
and Wolf Subd.

INDEXED ON MAP
3866

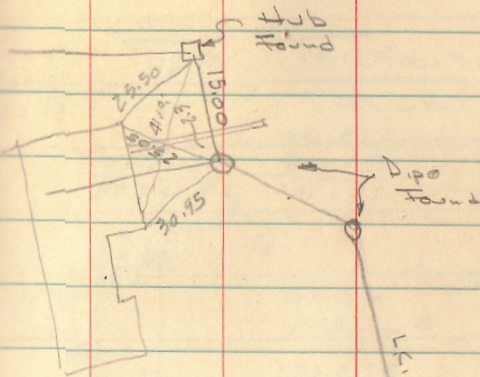
Wolfs

B	15'	
1	17'	
2	17'	
3	21'	
4	31'	
5	42'	
6	57'	
+75	63'	
7	82	
+30	45'	
8	40	
9	49'	
+54.5'	35	back
	34	ahead
1	64	
+93.8	82'	

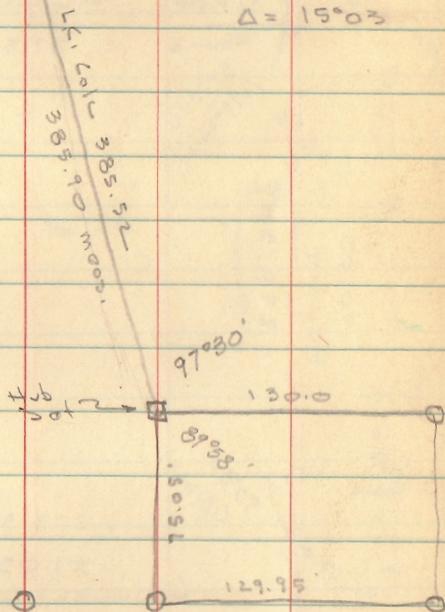
INDEXED ON MAP
3866



WOLF SURVEY



$\Delta = 15^{\circ}03'$



O = Pipe Found

INDEXED ON MAP
3866