

Schuler To Tracey Description

Situated in the Township of Washington, County of Logan, State of Ohio, and being in Virginia Military Survey No. 9925-9946-10121 and being more particularly described as follows:

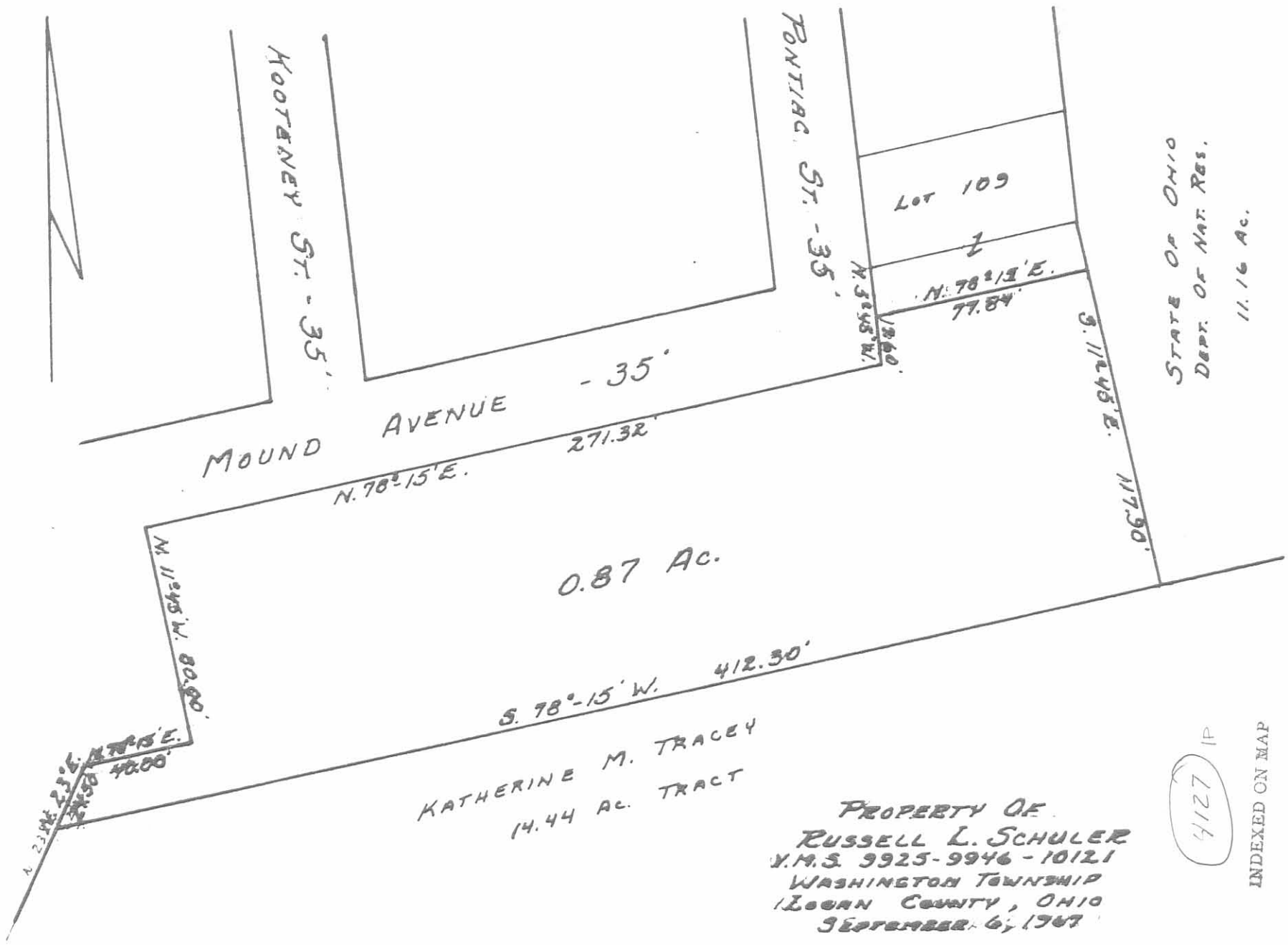
Beginning at the Southwest corner of the State of Ohio, Department of Natural Resources, 11.16 Ac. tract and in the North line of Katherine M. Tracey's 14.44 Ac. tract; Thence S. $78^{\circ} 15'$ W. 412.30 feet, with Tracey's North line to an iron pin, Northwest corner to Tracey; Thence N. $23^{\circ} 00'$ E. 24.50 feet to an iron pin; Thence N. $78^{\circ} 15'$ E. 40.00 feet to a point; Thence N. $11^{\circ} 45'$ W. 80.00 feet to a point in the South Line of Mound Ave. in Moundwood Allotment; Thence N. $78^{\circ} 15'$ E. 271.32 feet, with the South Line of Mound Ave. to a point where the East Line of Pontiac Street intersects the South Line of Mound Ave.; Thence N. $5^{\circ} 45'$ W. 17.60 feet with the East Line of Pontiac Street to a point; Thence N. $78^{\circ} 15'$ E. 77.84 feet to a point in the West line of the State of Ohio's 11.16 Ac. tract; Thence S. $11^{\circ} 45'$ E. 117.90 feet with said line to the place of beginning, containing 0.87 Ac., more or less.

This being the same premises as carried on the Logan County Auditors Tax Duplicate as being 0.64 Ac. + 0.18 Ac. + $\frac{1}{2}$ of a Vacated Street now in the name of Russell L. Schuler in Moundwood Allotment, Washington Township, Logan County, Ohio.

This description prepared by Daniel E. Gilbert, Registered Surveyor No. 5402 on September 6, 1967.

Daniel E. Gilbert
Reg. Sur. No. 5402

4127 1D



0.87 AC.

KATHERINE M. TRACEY
14.44 AC. TRACT

PROPERTY OF
 RUSSELL L. SCHULER
 V.M.S. 9925-9946-10121
 WASHINGTON TOWNSHIP
 LOGAN COUNTY, OHIO
 SEPTEMBER 6, 1967

STATE OF OHIO
 DEPT. OF NAT. RES.
 11.16 AC.

4127 IP

INDEXED ON MAP

SCALE: 1" = 50'

BY DANIEL E. SIBBERTT
 REGISTERED SURVEYOR No. 2782

REC'D 9-16-08 SUMOK

Lee Surveying and Mapping Co., Inc.

Land Surveys • Topography • Subdivisions • Construction Layout

117 N. Madriver St.
Bellefontaine OH 43311



Phone: (937) 593-7335
Fax: (937) 593-7444

TWICHELL 0.437 ACRE

Lying in Virginia Military Surveys 9925, 9946 and 10121, Washington Township, Logan County, Ohio.

Being out of the Alan F. Twichell III, 0.87 acre tract as deeded and described in Official Record 861, Page 874 of the Logan County Records of Deeds and being more particularly described as follows:

Commencing on a 5/8 inch iron rod found in concrete at the southeast corner of Lot 109 of Moundwood Allotment (Plat Cabinet A, Slide 231) and in the north line of vacated Mound Avenue (Vol. 265, Pg. 428).

THENCE, with the west line of the State of Ohio 11.16 acre tract (Vol. 270, Pg. 132, Parcel II), S 10°-08'-23"E, a distance of 17.53 feet to a 5/8 inch iron rod set at the TRUE POINT OF BEGINNING.

THENCE, with the west line of the said 11.16 acre tract, S 10°-08'-23"E, a distance of 117.87 feet to a 5/8 inch iron rod found.

THENCE, with the north line of the T & C Farm, Inc., 45.75 acre tract (O.R. 74, Pg. 949, Tract No. 1), S 78°-15'-00"W, a distance of 169.33 feet to a 5/8 inch iron rod set.

THENCE, N 18°-07'-08"W, a distance of 100.95 feet to a 5/8 inch iron rod set on the south right-of-way of Mound Avenue.

THENCE, with the south right-of-way of Mound Avenue (35 feet wide), N 78°-15'-00"E, a distance of 105.03 feet to a 5/8 inch iron rod set on the east right-of-way of Pontiac Street.

THENCE, with the east right-of-way of Pontiac Street (35 feet wide), N 05°-58'-44"W, a distance of 17.59 feet to a 5/8 inch iron rod set.

THENCE, with the center-line of vacated Mound Avenue, N 78°-15'-00"E, a distance of 77.04 feet to the point of beginning.

Containing 0.437 acre.

The basis for bearings is north line of the T & C Farm, Inc., 45.75 acre tract (O.R. 74, Pg. 949, Tract No. 1), being S 78°-15'-00"W, and all other bearings are from angles and distances measured in a field survey by Lee Surveying and Mapping Co., Inc. on September 11, 2008.

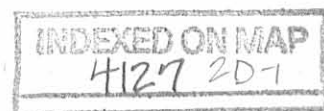


ORIGINAL STAMP IN GREEN

Description prepared by:

William K. Bruce
Professional Surveyor 7437
September 11, 2008

4491068



REC'D 9-14-08 SAM/OK

Lee Surveying and Mapping Co., Inc.

Land Surveys • Topography • Subdivisions • Construction Layout

117 N. Madriver St.
Bellefontaine OH 43311



Phone: (937) 593-7335
Fax: (937) 593-7444

TWICHELL 0.170 ACRE

Lying in Virginia Military Surveys 9925, 9946 and 10121, Washington Township, Logan County, Ohio.

Being out of the Alan F. Twichell III, 0.87 acre tract as deeded and described in Official Record 861, Page 874 of the Logan County Records of Deeds and being more particularly described as follows:

Commencing on a 5/8 inch iron rod found in concrete at the southeast corner of Lot 109 of Moundwood Allotment (Plat Cabinet A, Slide 231) and in the north line of vacated Mound Avenue (Vol. 265, Pg. 428).

THENCE, with the west line of the State of Ohio 11.16 acre tract (Vol. 270, Pg. 132, Parcel II), S 10°-08'-23"E, a distance of 17.53 feet to a 5/8 inch iron rod set.

THENCE, with the center-line of vacated Mound Avenue, S 78°-15'-00"W, a distance of 77.04 feet to a 5/8 inch iron rod set on the east right-of-way of Pontiac Street.

THENCE, with the east right-of-way of Pontiac Street (35 feet wide), S 05°-58'-44"E, a distance of 17.59 feet to a 5/8 inch iron rod set on the south right-of-way of Mound Avenue.

THENCE, with the south right-of-way of Mound Avenue (35 feet wide), S 78°-15'-00"W, a distance of 105.03 feet to a 5/8 inch iron rod set at the TRUE POINT OF BEGINNING.

THENCE, S 18°-07'-08"E, a distance of 100.95 feet to a 5/8 inch iron rod set.

THENCE, with the north line of the T & C Farm, Inc., 45.75 acre tract (O.R. 74, Pg. 949, Tract No. 1), S 78°-15'-00"W, a distance of 71.71 feet to a 5/8 inch iron rod set.

THENCE, N 21°-10'-19"W, a distance of 60.60 feet to a 5/8 inch iron rod set.

THENCE, N 17°-03'-26"W, a distance of 40.71 feet to a 5/8 inch iron rod set on the south right-of-way of Mound Avenue.

THENCE, with the south right-of-way of Mound Avenue, N 78°-15'-00"E, a distance of 74.20 feet to the point of beginning.

Containing 0.170 acre.

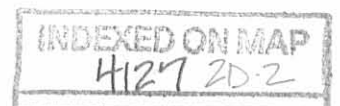
The basis for bearings is north line of the T & C Farm, Inc., 45.75 acre tract (O.R. 74, Pg. 949, Tract No. 1), being S 78°-15'-00"W, and all other bearings are from angles and distances measured in a field survey by Lee Surveying and Mapping Co., Inc. on September 11, 2008.



Description prepared by:

William K. Bruce

William K. Bruce
Professional Surveyor 7437
September 11, 2008



4491068

REC'D 9-14-08 SMM/OK

Lee Surveying and Mapping Co., Inc.

Land Surveys • Topography • Subdivisions • Construction Layout

117 N. Madriver St.
Bellefontaine OH 43311



Phone: (937) 593-7335
Fax: (937) 593-7444

TWICHELL 0.130 ACRE

Lying in Virginia Military Surveys 9925, 9946 and 10121, Washington Township, Logan County, Ohio.

Being out of the Alan F. Twichell III, 0.87 acre tract as deeded and described in Official Record 861, Page 874 of the Logan County Records of Deeds and being more particularly described as follows:

Commencing on a 5/8 inch iron rod found in concrete at the southeast corner of Lot 109 of Moundwood Allotment (Plat Cabinet A, Slide 231) and in the north line of vacated Mound Avenue (Vol. 265, Pg. 428).

THENCE, with the west line of the State of Ohio 11.16 acre tract (Vol. 270, Pg. 132, Parcel II), S 10°-08'-23"E, a distance of 17.53 feet to a 5/8 inch iron rod set.

THENCE, with the center-line of vacated Mound Avenue, S 78°-15'-00"W, a distance of 77.04 feet to a 5/8 inch iron rod set on the east right-of-way of Pontiac Street.

THENCE, with the east right-of-way of Pontiac Street (35 feet wide), S 05°-58'-44"E, a distance of 17.59 feet to a 5/8 inch iron rod set on the south right-of-way of Mound Avenue.

THENCE, with the south right-of-way of Mound Avenue (35 feet wide), S 78°-15'-00"W, a distance of 179.23 feet to a 5/8 inch iron rod set at the TRUE POINT OF BEGINNING, passing a 5/8 inch iron rod set at 105.03 feet.

THENCE, S 17°-03'-26"E, a distance of 40.71 feet to a 5/8 inch iron rod set.

THENCE, S 21°-10'-19"E, a distance of 60.60 feet to a 5/8 inch iron rod set.

THENCE, with the north line of the T & C Farm, Inc., 45.75 acre tract (O.R. 74, Pg. 949, Tract No. 1), S 78°-15'-00"W, a distance of 171.03 feet to a 5/8 inch iron rod found.

THENCE, with the lines of the Indian Mound Park, the following two courses:
N 20°-00'-58"E, a distance of 24.09 feet to a 5/8 inch iron rod found.

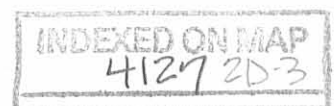
N 78°-20'-32"E, a distance of 40.00 feet to a 5/8 inch iron rod found.

THENCE, N 55°-01'-08"E, a distance of 25.64 feet to a 5/8 inch iron rod set.

THENCE, N 66°-56'-01"E, a distance of 78.55 feet to a 5/8 inch iron rod set.

THENCE, N 21°-10'-19"W, a distance of 12.73 feet to a 5/8 inch iron rod set.

THENCE, N 17°-03'-26"W, a distance of 42.00 feet to a 5/8 inch iron rod set on the south right-of-way of Mound Avenue.



Lee Surveying and Mapping Co., Inc.

Land Surveys • Topography • Subdivisions • Construction Layout

117 N. Madriver St.
Bellefontaine OH 43311



Phone: (937) 593-7335
Fax: (937) 593-7444

THENCE, with the south right-of-way of Mound Avenue, N $78^{\circ}15'00''$ E, a distance of 10.04 feet to the point of beginning.

Containing 0.130 acre.

The basis for bearings is north line of the T & C Farm, Inc., 45.75 acre tract (O.R. 74, Pg. 949, Tract No. 1), being S $78^{\circ}15'00''$ W, and all other bearings are from angles and distances measured in a field survey by Lee Surveying and Mapping Co., Inc. on September 11, 2008.



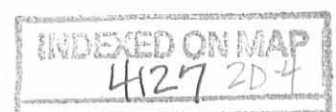
ORIGINAL STAMP IN GREEN

Description prepared by:

A handwritten signature in black ink that reads 'William K. Bruce'.

William K. Bruce
Professional Surveyor 7437
September 11, 2008

4491068



REC'D 9-16-08 GUY OK
Lee Surveying and Mapping Co., Inc.

Land Surveys • Topography • Subdivisions • Construction Layout

117 N. Madriver St.
Bellefontaine OH 43311



Phone: (937) 593-7335
Fax: (937) 593-7444

**TWICHELL
0.146 ACRE**

Lying in Virginia Military Surveys 9925, 9946 and 10121, Washington Township, Logan County, Ohio.

Being out of the Alan F. Twichell III, 0.87 acre tract as deeded and described in Official Record 861, Page 874 of the Logan County Records of Deeds and being more particularly described as follows:

Commencing on a 5/8 inch iron rod found in concrete at the southeast corner of Lot 109 of Moundwood Allotment (Plat Cabinet A, Slide 231) and in the north line of vacated Mound Avenue (Vol. 265, Pg. 428).

THENCE, with the west line of the State of Ohio 11.16 acre tract (Vol. 270, Pg. 132, Parcel II), S 10°-08'-23"E, a distance of 17.53 feet to a 5/8 inch iron rod set.

THENCE, with the center-line of vacated Mound Avenue, S 78°-15'-00"W, a distance of 77.04 feet to a 5/8 inch iron rod set on the east right-of-way of Pontiac Street.

THENCE, with the east right-of-way of Pontiac Street (35 feet wide), S 05°-58'-44"E, a distance of 17.59 feet to a 5/8 inch iron rod set on the south right-of-way of Mound Avenue.

THENCE, with the south right-of-way of Mound Avenue (35 feet wide), S 78°-15'-00"W, a distance of 189.27 feet to a 5/8 inch iron rod set at the TRUE POINT OF BEGINNING, passing 5/8 inch iron rods set at 105.03 feet and 179.23 feet.

THENCE, S 17°-03'-26"E, a distance of 42.00 feet to a 5/8 inch iron rod set.

THENCE, S 21°-10'-19"E, a distance of 12.73 feet to a 5/8 inch iron rod set.

THENCE, S 66°-56'-01"W, a distance of 78.55 feet to a 5/8 inch iron rod set.

THENCE, S 55°-01'-08"W, a distance of 25.64 feet to a 5/8 inch iron rod found.

THENCE, with the east line of the Indian Mound Park, N 11°-43'-40"W, a distance of 79.91 feet to a 5/8 inch iron rod found on the south right-of-way of Mound Avenue.

THENCE, with the south right-of-way of Mound Avenue, N 78°-15'-00"E, a distance of 94.59 feet to the point of beginning.

Containing 0.146 acre.

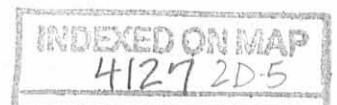
The basis for bearings is north line of the T & C Farm, Inc., 45.75 acre tract (O.R. 74, Pg. 949, Tract No. 1), being S 78°-15'-00"W, and all other bearings are from angles and distances measured in a field survey by Lee Surveying and Mapping Co., Inc. on September 11, 2008.



ORIGINAL STAMP IN GREEN

Description prepared by:

William K. Bruce
Professional Surveyor 7437
September 11, 2008



4491068

REC'D 9-16-08 SMY BK



**SURVEY OF FOUR TRACTS OUT OF THE
ALAN F. TWICHELL III
0.87 ACRE TRACT
OFFICIAL RECORD 861, PAGE 874
VIRGINIA MILITARY SURVEYS
9925, 9946 AND 10121
WASHINGTON TOWNSHIP
LOGAN COUNTY, OHIO**

SURVEYED BY:
William K. Bruce
WILLIAM K. BRUCE
PROFESSIONAL SURVEYOR 7437
JUNE 26, 2008
REVISED SEPTEMBER 11, 2008



COPYRIGHT 2008 BY:
LEE SURVEYING & MAPPING CO., INC.
117 North Modriver Street
BELLEFONTAINE, OHIO 43311
(937) 593-7335
surveys@lsminc.us
KSS D0608 4491068 L-4491-2

2 WORKING DAYS
BEFORE YOU DIG
CALL TOLL FREE 800-362-2764
OHIO UTILITIES PROTECTION SERVICE

INDEXED ON MAP
4127 2P

Lee Surveying and Mapping Co., Inc.

Land Surveys • Topography • Subdivisions • Construction Layout

117 N. Madriver St.
Bellefontaine OH 43311



Phone: (937) 593-7335
Fax: (937) 593-7444

TWICHELL 0.277 ACRE

Lying in Virginia Military Surveys 9925, 9946 and 10121, Washington Township, Logan County, Ohio.

Being out of the Alan F. Twichell III, 0.87 acre tract as deeded and described in Official Record 861, Page 874 of the Logan County Records of Deeds and being more particularly described as follows:

Commencing on a 5/8 inch iron rod found in concrete at the southeast corner of Lot 109 of Moundwood Allotment (Plat Cabinet A, Slide 231) and in the north line of vacated Mound Avenue (Vol. 265, Pg. 428).

THENCE, with the west line of the State of Ohio 11.16 acre tract (Vol. 270, Pg. 132, Parcel II), S 10°-08'-23"E, a distance of 17.53 feet to a 5/8 inch iron rod set.

THENCE, with the center-line of vacated Mound Avenue, S 78°-15'-00"W, a distance of 77.04 feet to a 5/8 inch iron rod set on the east right-of-way of Pontiac Street.

THENCE, with the east right-of-way of Pontiac Street (35 feet wide), S 05°-58'-44"E, a distance of 17.59 feet to a 5/8 inch iron rod set on the south right-of-way of Mound Avenue.

THENCE, with the south right-of-way of Mound Avenue (35 feet wide), S 78°-15'-00"W, a distance of 179.23 feet to a 5/8 inch iron rod set at the TRUE POINT OF BEGINNING, passing a 5/8 inch iron rod set at 105.03 feet.

THENCE, S 17°-03'-26"E, a distance of 40.71 feet to a 5/8 inch iron rod set.

THENCE, S 21°-10'-19"E, a distance of 60.60 feet to a 5/8 inch iron rod set.

THENCE, with the north line of the T & C Farm, Inc., 45.75 acre tract (O.R. 74, Pg. 949, Tract No. 1), S 78°-15'-00"W, a distance of 171.03 feet to a 5/8 inch iron rod found.

THENCE, with the lines of the Indian Mound Park, the following three courses:

N 20°-00'-58"E, a distance of 24.09 feet to a 5/8 inch iron rod found.

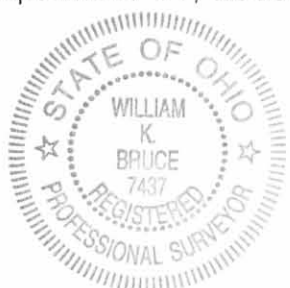
N 78°-20'-32"E, a distance of 40.00 feet to a 5/8 inch iron rod found.

N 11°-43'-40"W, a distance of 79.91 feet to a 5/8 inch iron rod found on the south right-of-way of Mound Avenue.

THENCE, with the south right-of-way of Mound Avenue, N 78°-15'-00"E, a distance of 104.63 feet to the point of beginning.

Containing 0.277 acre.

The basis for bearings is north line of the T & C Farm, Inc., 45.75 acre tract (O.R. 74, Pg. 949, Tract No. 1), being S 78°-15'-00"W, and all other bearings are from angles and distances measured in a field survey by Lee Surveying and Mapping Co., Inc. on September 11, 2008.



ORIGINAL STAMP IN GREEN

Description prepared by:

William K. Bruce

William K. Bruce
Professional Surveyor 7437
July 16, 2009



4491079

REC'D 7-20-09 smj OK



LEGEND:

- 5/8 INCH IRON ROD FOUND
- ⊗ RAILROAD SPIKE FOUND
- 5/8 INCH IRON ROD SET
- ⊕ 5/8 INCH IRON ROD FOUND IN CONCRETE

SCALE: 20 FEET TO 1 INCH

STATE OF OHIO
11.16 ACRES
VOL. 270, PG. 132
PARCEL II

0.437 ACRE

0.170 ACRE

0.277 ACRE

**SURVEY OF THREE TRACTS OUT OF THE
ALAN F. TWICHELL III
0.87 ACRE TRACT
OFFICIAL RECORD 861, PAGE 874
VIRGINIA MILITARY SURVEYS
9925, 9946 AND 10121
WASHINGTON TOWNSHIP
LOGAN COUNTY, OHIO**

SURVEYED BY:

William K. Bruce
WILLIAM K. BRUCE
PROFESSIONAL SURVEYOR 7437
JUNE 26, 2008
REVISED SEPTEMBER 11, 2008
REVISED JULY 16, 2009 (COMBINE TWO TRACTS)



ORIGINAL STAMP IN GREEN

INDEXED ON MAP
4127 3P

COPYRIGHT 2009 BY:
LEE SURVEYING & MAPPING CO., INC.
117 North Modriver Street
BELLEFONTAINE, OHIO 43311
(937) 593-7335
surveys@lsmcinc.us

KSS D0709 4491079 L-4491-2

2 WORKING DAYS
BEFORE YOU DIG
CALL TOLL FREE **800-362-2764**
OHIO UTILITIES PROTECTION SERVICE

T & C FARM, INC.
45.75 ACRES
O.R. 74, PG. 949
TRACT NO. 1

ALAN F. TWICHELL III
0.87 ACRE
O.R. 861, PG. 874

INDEXED ON MAP
4127 3P