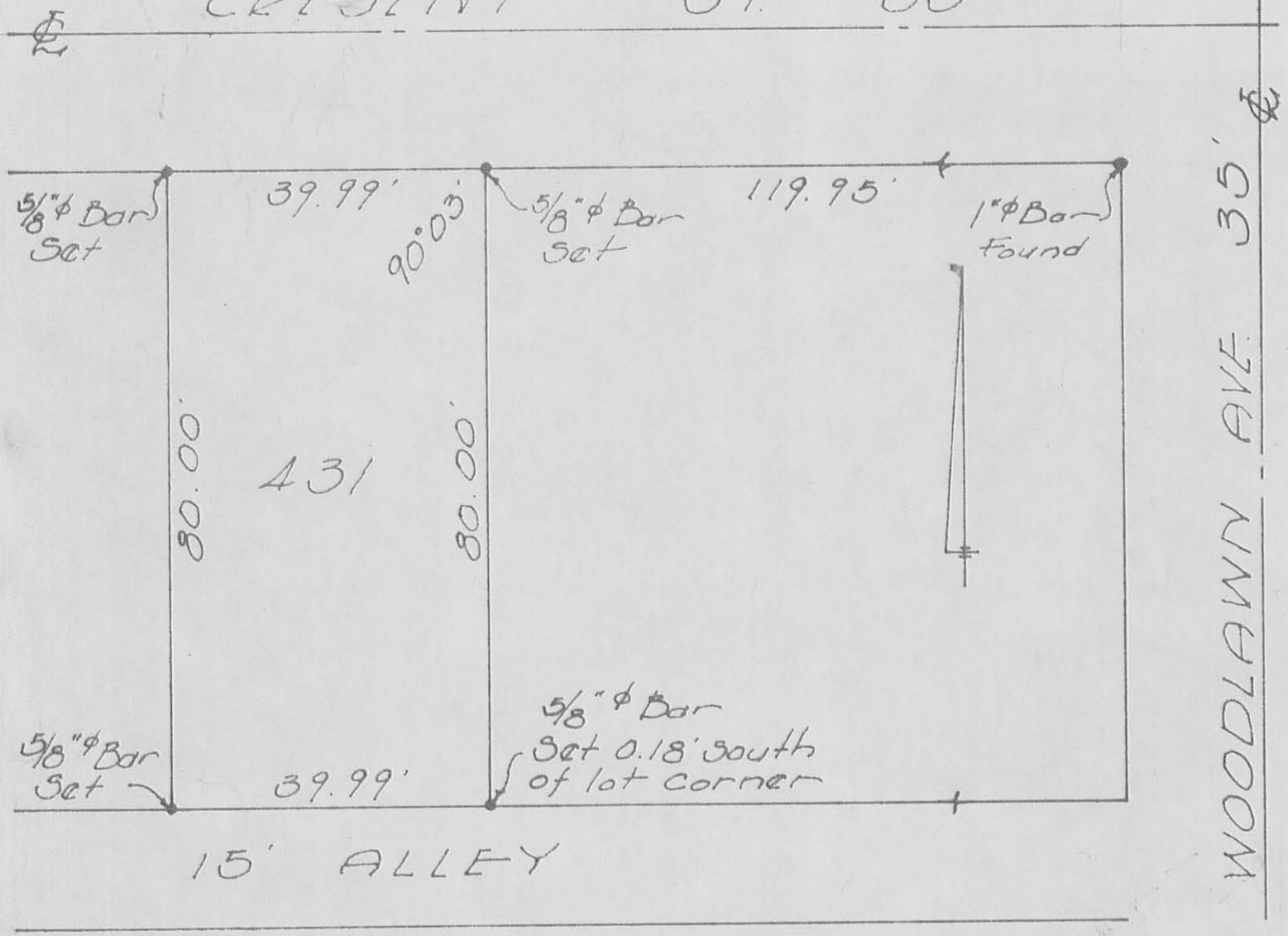


CRESSENT ST 35'



SURVEY OF LOT 431  
 ORCHARD ISLAND  
 WASHINGTON TOWNSHIP  
 SEPT. 23, 1967  
 SCALE 1"=20'

*Dan L. Dodson*

DAN L. DODSON  
 Reg. Surveyor 4270  
 Bellefontaine, Ohio

INDEXED ON MAP  
 4176 IP

LOT A 31  
ORCHARD ISLAND

Dodson  
Nichols

Irons found @ intersections as  
indicated in F.B. 652

519.80	143.69
	119.95
143.69	<u>23.74</u>

A = 5/8"  $\phi$  Bar Set - found 1" pipe  
6" deep 0.1' north & 0.05' west of  
bar set.

B = 5/8"  $\phi$  Bar Set 0.18' south of corner  
- 3/4" pipe found 0.3' west & 0.1' north

C = 5/8"  $\phi$  Bar Set - found 3/4" pipe  
0.5' north & 0.1' west

D = 5/8"  $\phi$  Bar Set - power pole on  
line - Meas. 80.0 from C &  
39.99 from B

INDEXED ON MAP  
4176

WOODLAWN 35'

9/29/67

17

