

FB 700

STREET CENTERS  
FIVE PARKS ADDITION

STREETS 30' WIDE

Set on stone Mon. @ S.W. Cor. Five Parks Add.,  
Set 1" # Bar @ E. Patterson Dr. & W. line., meas.  
E. on E. Patterson Dr. @ 99.15' set 1" # Bar  
for E. Hancock Dr.

Set on "A" sight "B", set upd. nail @ 10.0'  
for E. Hancock Dr. - Set on nail, sight Bar  
@ E. Patterson, meas. S. @ 95.0' set 1" # Bar  
for E. Indian Dr. - Meas. S. from E. Indian  
Dr. to E. Patterson = 975.87' (plat = 975.75)  
@ 410.05' set 1" # Bar for E. Midway Dr.

Set on Bar @ E. Hancock & Indian Dr.,  
meas. S. from "D" 115.0' for E. Indian Dr.,  
meas. E. on Indian Set 1" # Bars @ E. Allen,  
Hardin & Clark Dr.

Set on Bar @ Indian & Clarke, made  
Clarke parallel to Hancock, meas. S. plat dist.  
= 772.86 set 1" # Bar for E. Patterson @ 410.00

Set 1" # Bar for E. Midway Dr.

Set other st. centers.

CONT'D. NEXT PAGE.

CLARKE @ PATTERSON

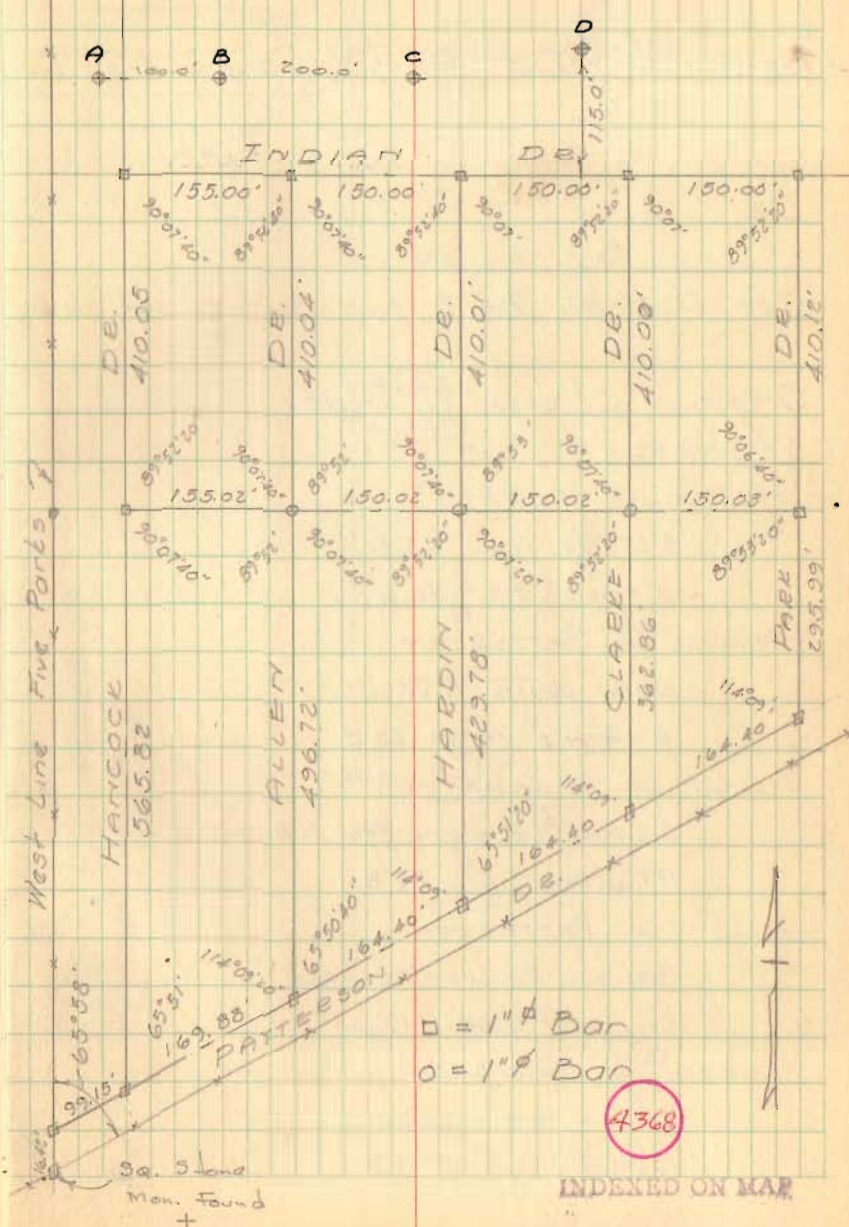
S.W. Cor. 1st frame Res. N.E. 59.39'

S.E. Cor. 1st Conc. block Res. N.W. 59.49'

Tavis Dodson  
Ricketts  
Tillman

July 23-27, 1962  
80°

24



INDEXED ON MAP

FIVE PARK STREETS-CONT'D

- A = 3/4"  $\phi$  Bar Found (original Iron)
- B = " " " "
- C = " " " "
- D = " " " "

See Dodson Blk 2 for survey lot 50-66

Original streets 20' wide

WITNESS:

HANCOCK @ MIDWAY

5" maple N.E. 63.3

10" Maple S.E. 40.6

HANCOCK @ PATTERSON

Water pump N.W. 59.95'

6" Apple N.W. 25.5

ALLEN @ MIDWAY

S.E. cor. 1st. frame Res. N.W. 32.10'

12" quad. maple S.E. 27.8

ALLEN @ PATTERSON

S.W. Cor. Garage - N.E 52.47'

Cor. post N.W. 19.33'

HARDIN @ PATTERSON

6" Elm N.W. 33.5

18" Hawthood West 75.9'



July 23-27, 1962

