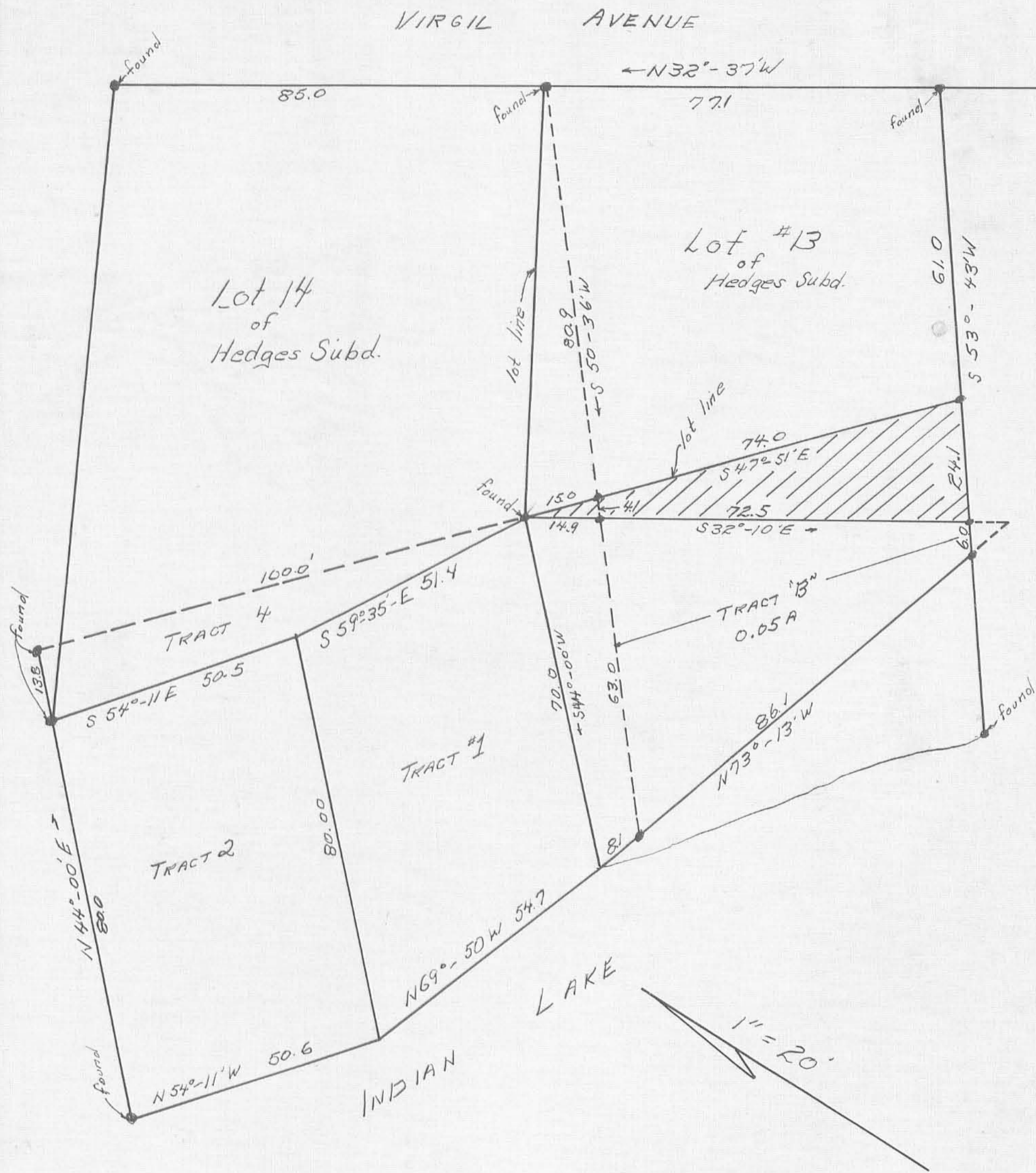


C. Thompson's Tract # overlaps Lot #14.



Lot #12  
Shaded area is land between Lot #13 + C. Thompson land.

Thompson Survey  
 Washington Twp., Logan Co., Ohio  
 V.M.S. 9925, 9946, + 10121  
 June 4, 1960  
 Owen K. Shirk; Reg. Surveyor 4271

Notes & Legend:

1. ——— represents the deed line of Robert B. Dunham to Charles Schlegel et ux as recorded in 1944. Also Hedges deed.
2. ——— represents the Wonders Line as surveyed in 1892. Then it was also the 1.0' above spillway level line.
3. ——— represents the present 2.0' above spillway level line as measured July, 1969.

Error of closure: These two pts. should be the same.



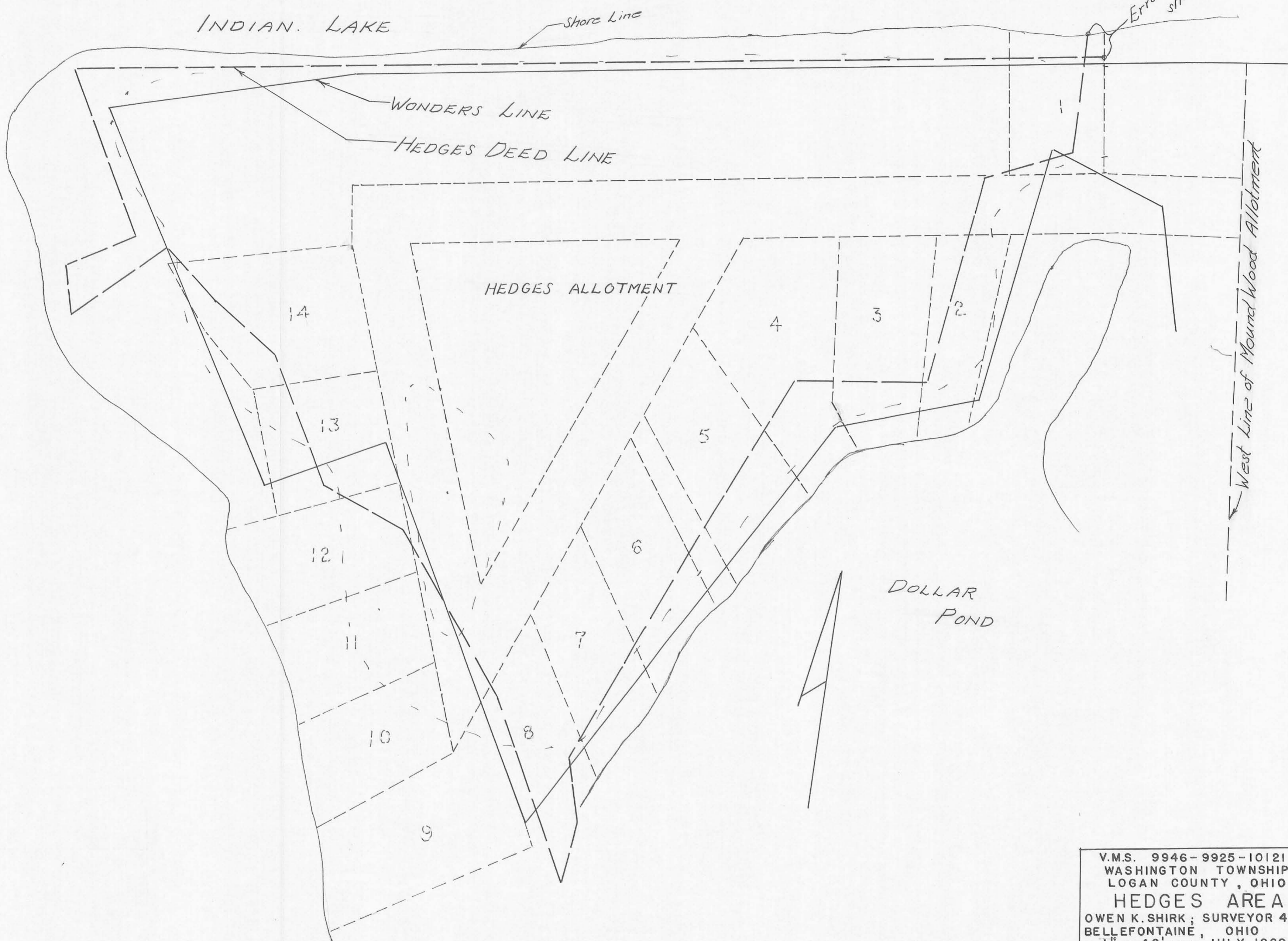
ENTERED ON MAP  
4556  
IF

V.M.S. 9946-9925-10121  
WASHINGTON TOWNSHIP  
LOGAN COUNTY, OHIO  
**HEDGES AREA**  
OWEN K. SHIRK; SURVEYOR 4271  
BELLEFONTAINE, OHIO  
1" = 40' — JULY, 1969

Notes & Legend:

1. ——— represents the deed line of Robert B. Dunham to Charles Schlegel et ux as recorded in 1949. Also Hedges deed.
2. - - - - represents the Wonders Line as surveyed in 1892. Then it was also the 1.0' above spillway level line.
3. ——— represents the present 2.0' above spillway level line as measured July, 1969.

Error of closure: These two pts. should be the same.



V.M.S. 9946-9925-10121  
 WASHINGTON TOWNSHIP  
 LOGAN COUNTY, OHIO  
**HEDGES AREA**  
 OWEN K. SHIRK; SURVEYOR 4271  
 BELLEFONTAINE, OHIO  
 1" = 40' — JULY, 1969