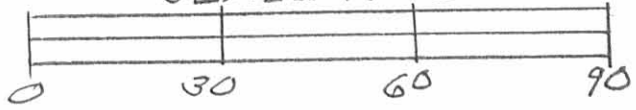


REC'D 12-12-95 SWY OK



SURVEY OF LOTS 483 & 484 OF  
 ORCHARD ISLAND, WASHINGTON  
 TOWNSHIP, LOGAN COUNTY,  
 OHIO FOR LAWRENCE ENGELBRINK,  
 DECEMBER 12, 1995  
 SCALE: 1"=30'



LEGEND:  
 A = 5/8" IRON BAR SET  
 B = 1/2" IRON BAR FOUND

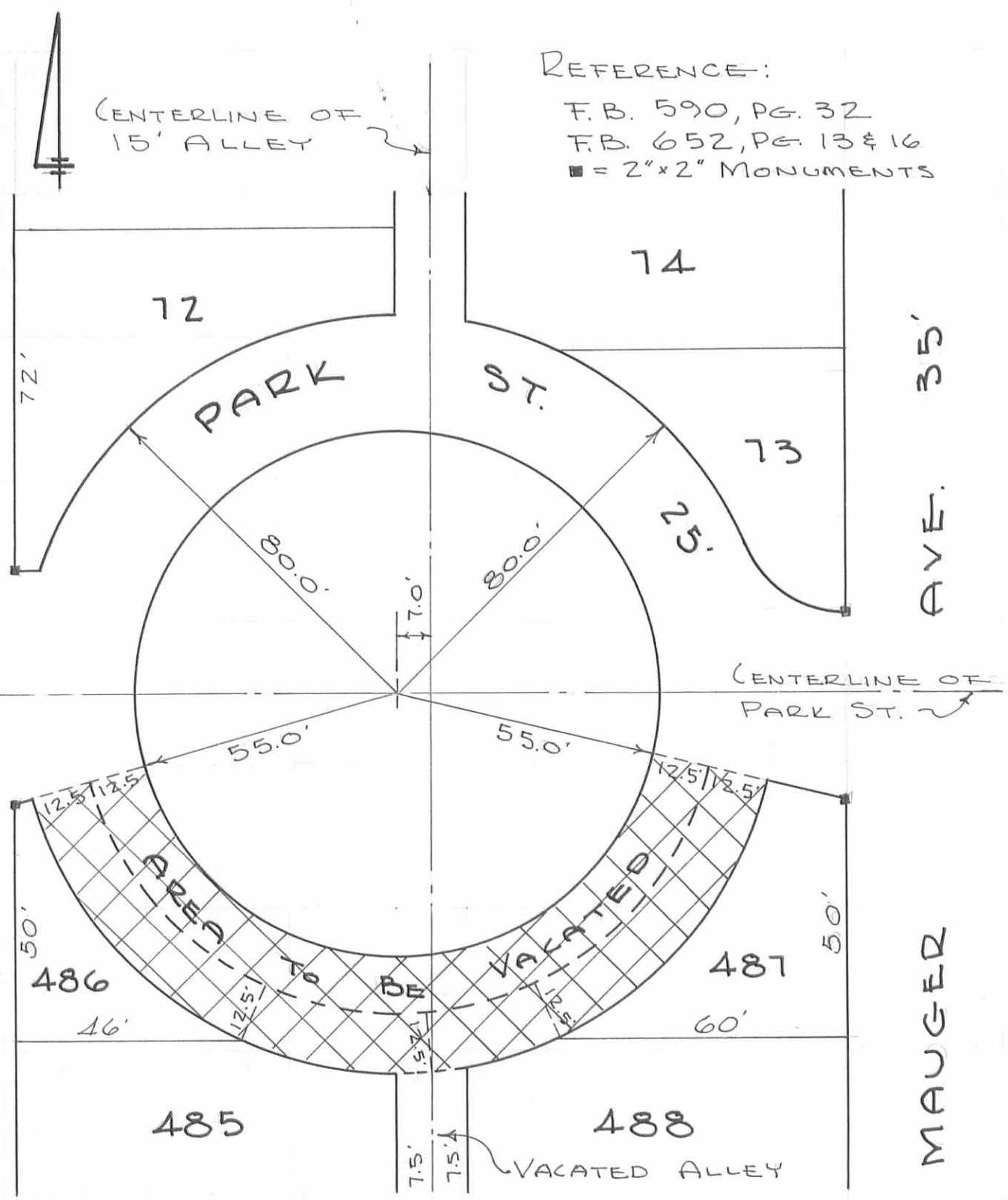


INDEXED ON MAP  
 4749 1P

*Leslie H. Geeslin*  
 LESLIE H. GEESLIN  
 RUSHSVANIA, OHIO  
 PH 513-468-2793

GROVE AVE. 35'

COTTAGE



REFERENCE:  
 F.B. 590, PG. 32  
 F.B. 652, PG. 13 & 16  
 ■ = 2"x2" MONUMENTS

AVE. 35'

MAUGER

PROPOSED VACATION  
 PARK STREET  
 ORCHARD ISLAND  
 AUGUST 28, 1970  
 SCALE 1" = 30'

C.R. KURTZ COUNTY ENGINEER

INDEXED ON MAP  
 4749 2P