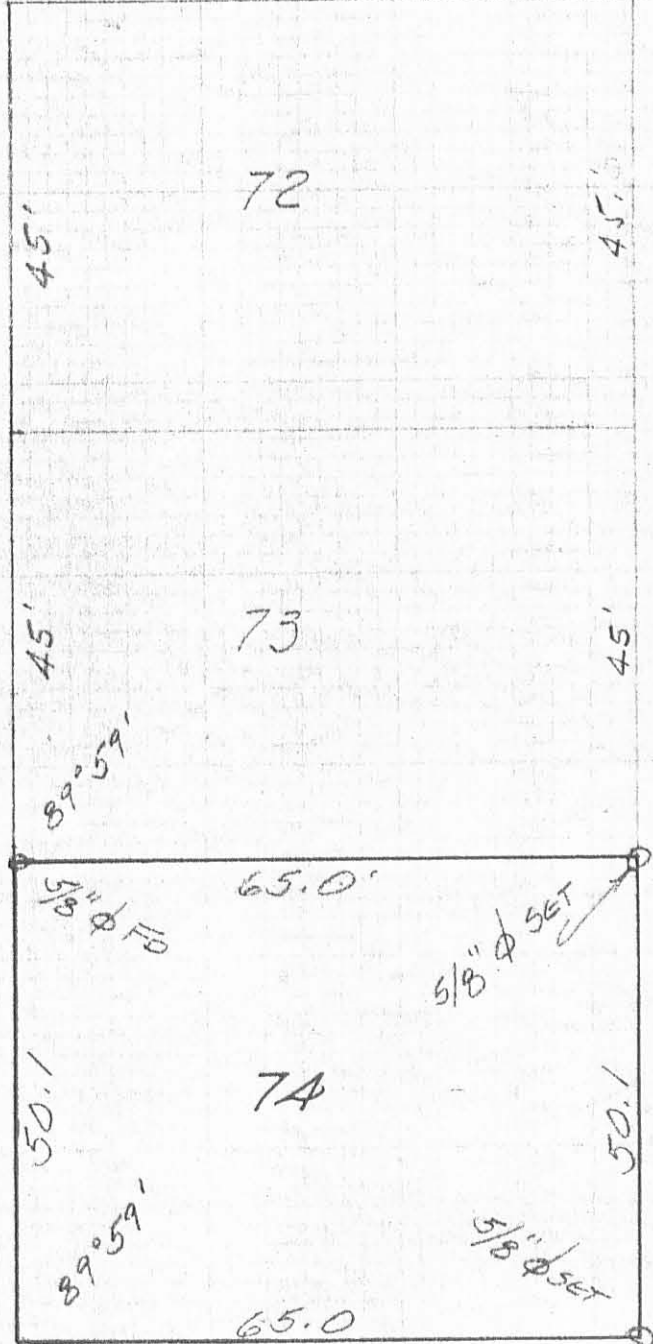


WILLOW AVE. (20')

PARK DRIVE (25')

10' ALLEY



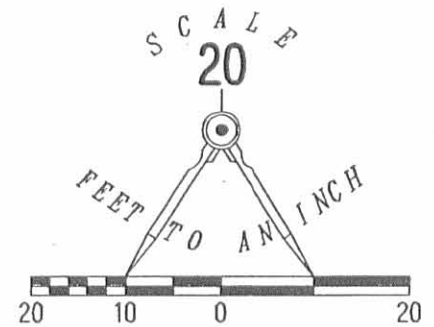
75  
 5/8"  $\phi$  PLACED OVER  
 OLD HUB  
 (5697) IP

SURVEY OF LOT 74  
 WATERBURY ALLOT.  
 RUSSELLS POINT, OHIO  
 NOV., 1974

LESLIE H. GRESLIN  
 REG. SURVEYOR 5248  
 Russell Point

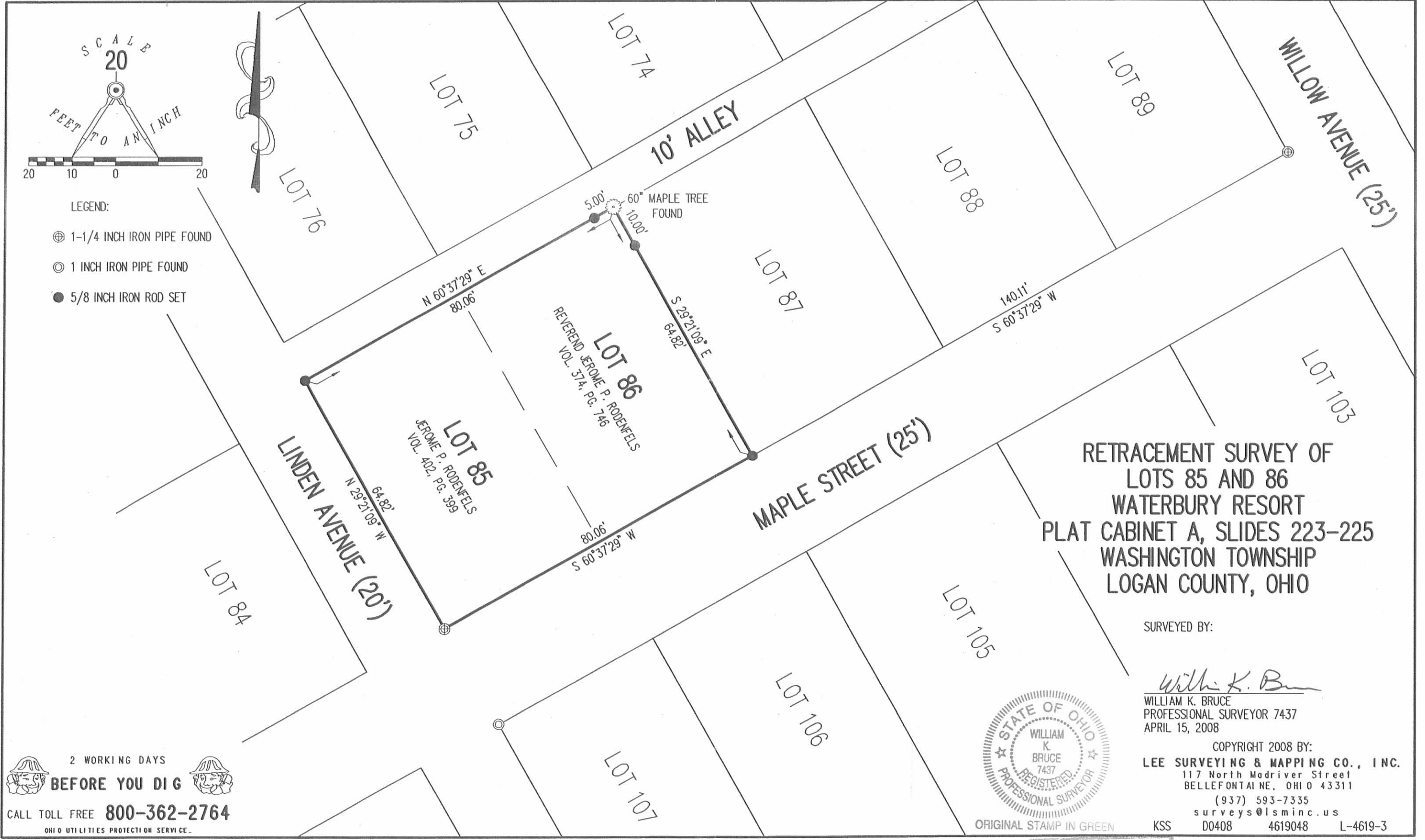
INDEXED ON MAP

REC'D 4-17-08 SMY OK



LEGEND:

- ⊕ 1-1/4 INCH IRON PIPE FOUND
- ⊙ 1 INCH IRON PIPE FOUND
- 5/8 INCH IRON ROD SET



RETRACEMENT SURVEY OF  
LOTS 85 AND 86  
WATERBURY RESORT  
PLAT CABINET A, SLIDES 223-225  
WASHINGTON TOWNSHIP  
LOGAN COUNTY, OHIO

SURVEYED BY:

*William K. Bruce*

WILLIAM K. BRUCE  
PROFESSIONAL SURVEYOR 7437  
APRIL 15, 2008



ORIGINAL STAMP IN GREEN

COPYRIGHT 2008 BY:  
**LEE SURVEYING & MAPPING CO., INC.**  
117 North Madriver Street  
BELLEFONTAINE, OHIO 43311  
(937) 593-7335  
surveys@lsmcinc.us  
KSS D0408 4619048 L-4619-3

2 WORKING DAYS  
**BEFORE YOU DIG**  
CALL TOLL FREE **800-362-2764**  
OHIO UTILITIES PROTECTION SERVICE.

INDEXED ON MAP  
5697 2P