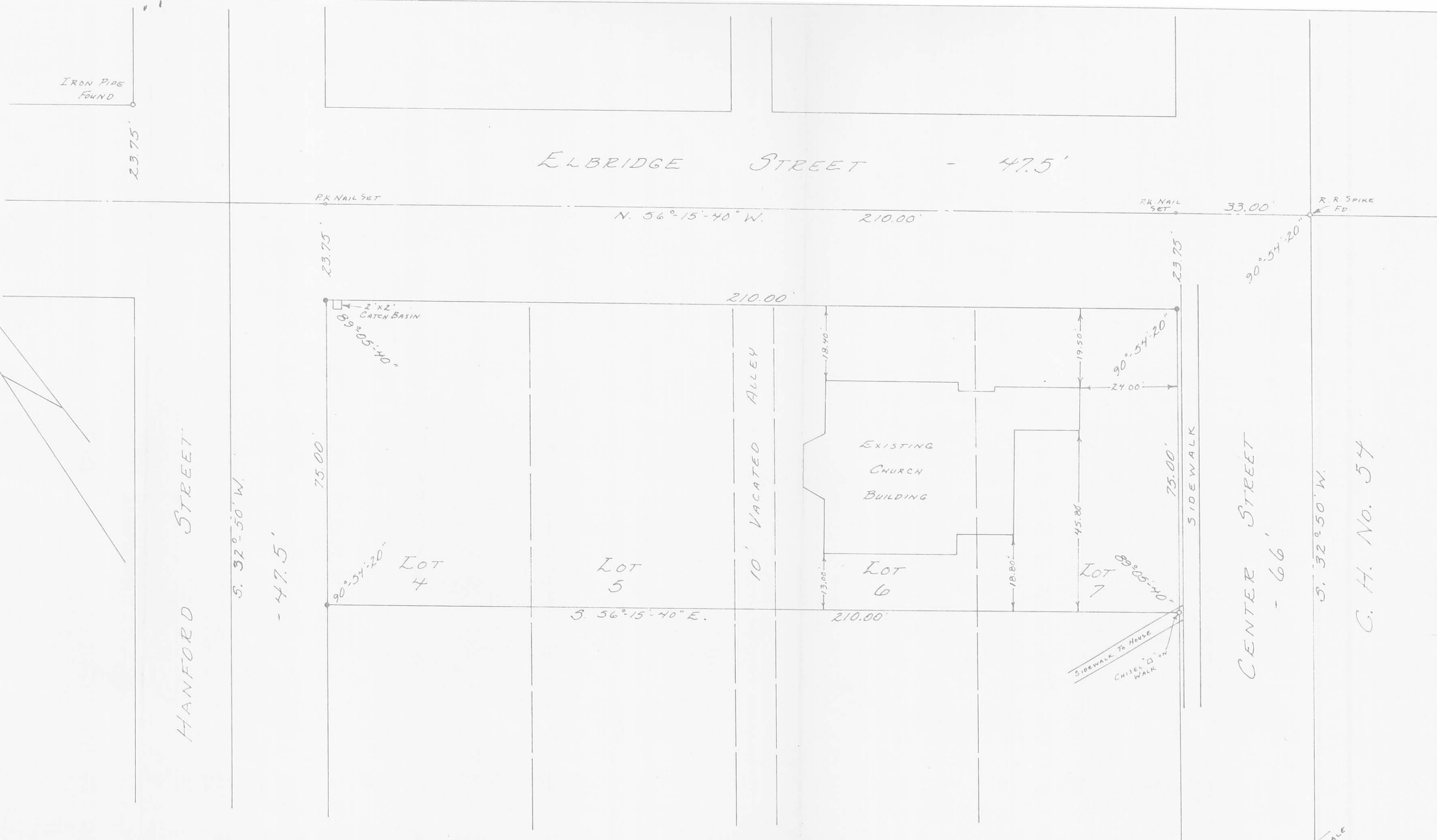


LEWISTOWN METHODIST CHURCH  
 SURVEY  
 PART OF LOTS 4, 5, 6 & 7  
 VILLAGE OF LEWISTOWN  
 SECTION 24 T. 7S. R. 8E.  
 WASHINGTON TOWNSHIP  
 LOGAN COUNTY, OHIO  
 MARCH 29, 1975  
 SCALE: 1" = 20'

SURVEYED AND PLATED BY:  
 DANIEL E. GILBERT, P.S.  
 REG. SUR. NO. 5402  
 1041 N. MAIN ST.  
 BELLEFONTAINE, OHIO 43311



5704 IP  
 INDEXED ON MAP

• - 5/8" Ø IRON BARS SET.

BROKEN SCALE  
 IRON FD.