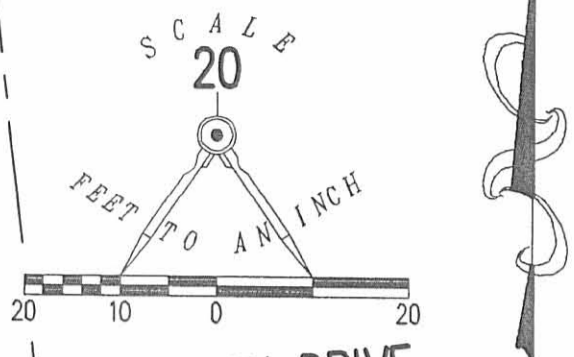
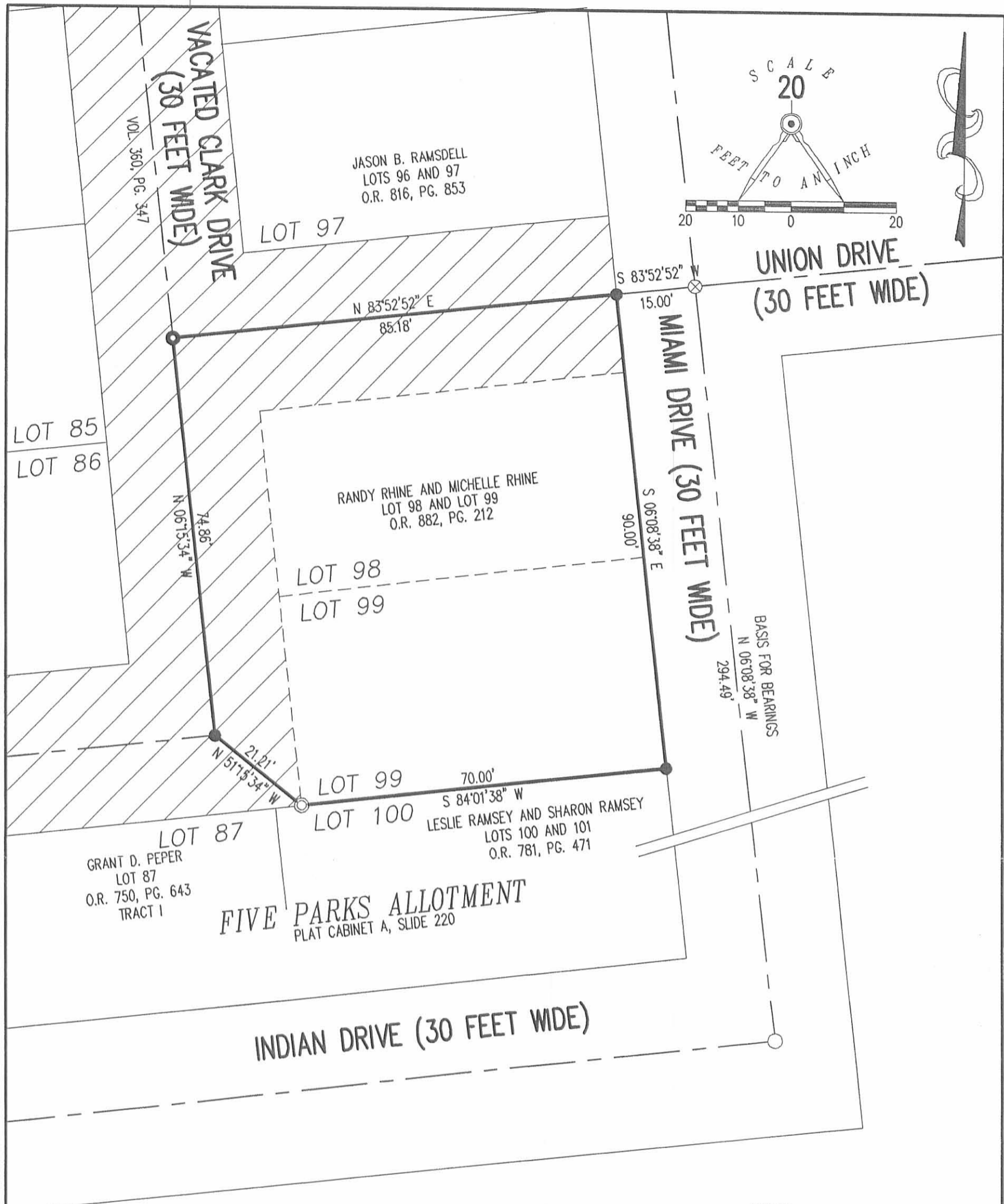


REV'D 11-30-07 SKM BK



A RETRACEMENT SURVEY OF THE
 RANDY RHINE AND MICHELLE RHINE
 LOT 98 AND LOT 99
 OFFICIAL RECORD 882, PAGE 212
 FIVE PARKS ALLOTMENT
 PLAT CABINET A, SLIDE 220
 VIRGINIA MILITARY SURVEY 9925, 9946, 10121
 WASHINGTON TOWNSHIP
 LOGAN COUNTY, OHIO

LEGEND

- 5/8 INCH IRON ROD SET
- 5/8 INCH IRON ROD FOUND
- ⊙ 1/2 INCH IRON ROD FOUND
- 1 INCH IRON BAR FOUND
- ⊗ RAIL ROAD SPIKE FOUND

SURVEYED BY:

William K. Bruce
 WILLIAM K. BRUCE
 PROFESSIONAL SURVEYOR 7437
 NOVEMBER 27, 2007

COPYRIGHT 2007 BY:
 LEE SURVEYING & MAPPING CO., INC.
 117 North Madriver Street
 BELLEFONTAINE, OHIO 43311
 (937) 593-7335
 surveys@lsminc.us



ORIGINAL STAMP IN GREEN

ADW

D1107

4552117

L-4552117-3

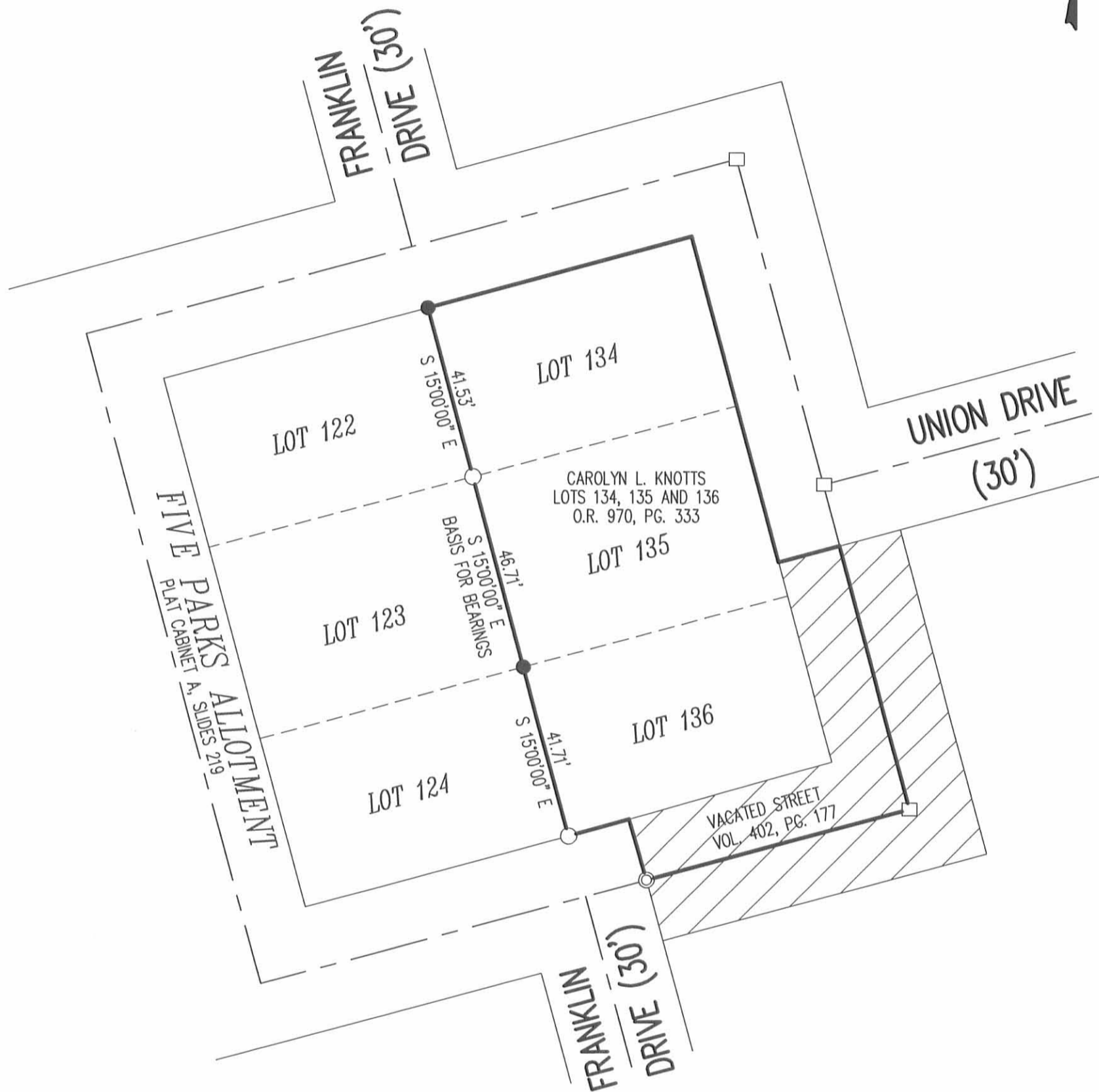
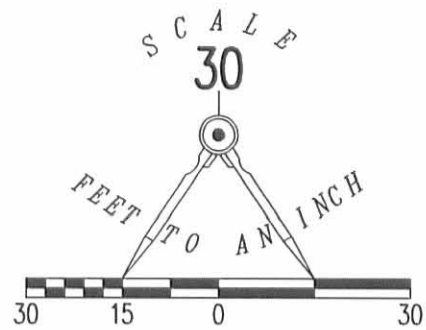
2 WORKING DAYS
BEFORE YOU DIG
 CALL TOLL FREE **800-362-2764**
 OHIO UTILITIES PROTECTION SERVICE

INDEXED ON MAP
 5830 1P

REV'D 4-16-12 8MM/OK

LEGEND

- 5/8 INCH IRON ROD SET WITH PLASTIC I.D. CAP STAMPED "LSM7437"
- 5/8 INCH IRON ROD FOUND
- 1 INCH SQUARE BAR FOUND
- ◎ 3/4 INCH IRON ROD FOUND



RETRACEMENT OF WEST LINE OF THE
 CAROLYN L. KNOTTS
 LOTS 134, 135 AND 136
 OFFICIAL RECORD 970, PAGE 333
 FIVE PARKS ALLOTMENT
 PLAT CABINET A, SLIDES 219
 WASHINGTON TOWNSHIP
 LOGAN COUNTY, OHIO

SURVEYED BY:



William K. Bruce
 WILLIAM K. BRUCE
 PROFESSIONAL SURVEYOR 7437
 APRIL 10, 2012

COPYRIGHT 2012 BY:
LEE SURVEYING & MAPPING CO., INC.
 117 North Madriver Street
 BELLEFONTAINE, OHIO 43311
 (937) 593-7335
 WWW.LSMINC.US
 surveys@lsminc.us

ORIGINAL STAMP IN GREEN



2 WORKING DAYS

BEFORE YOU DIG



CALL TOLL FREE **800-362-2764**

OHIO UTILITIES PROTECTION SERVICE

INDEXED ON MAP

5830 2P

ADW D0412 23800412 L-2380-3

DEED & SURVEY REFERENCES:

REFERENCE DEEDS ARE SHOWN HEREON

FIVE PARKS ALLOTMENT
 PLAT CABINET A, SLIDES 219-221

LOGAN COUNTY ENGINEER'S MAP ROOM
 FILES: 8702, 3449 AND 5482

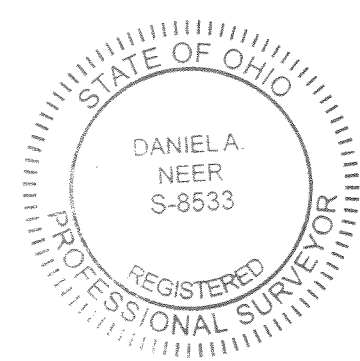
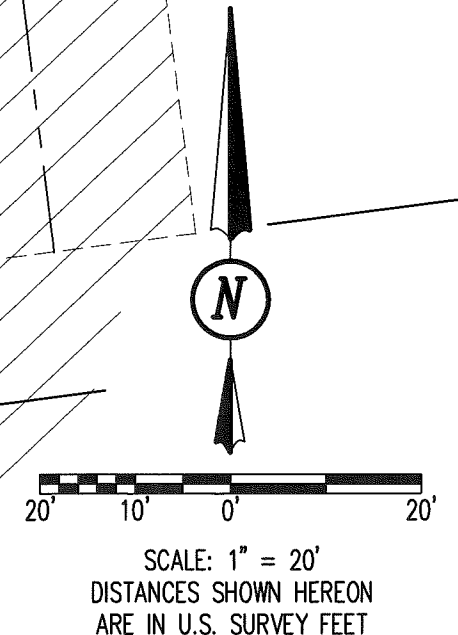
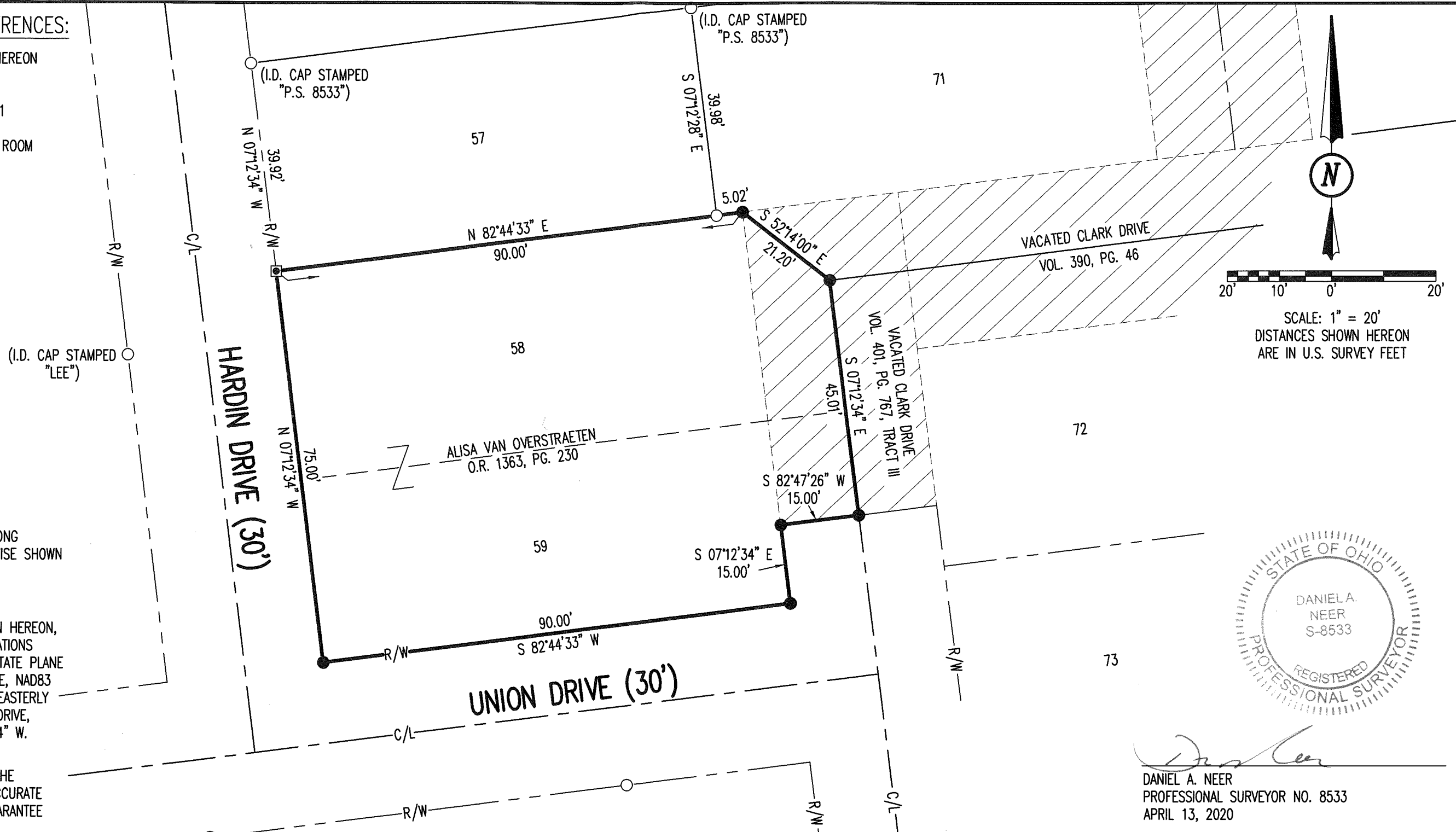
OCCUPATION NOTE:

NO EVIDENCE OF OCCUPATION ALONG
 BOUNDARY LINES UNLESS OTHERWISE SHOWN

BASIS FOR BEARINGS:

BEARINGS AND DISTANCES, SHOWN HEREON,
 ARE DERIVED FROM GPS OBSERVATIONS
 BASED ON GRID NORTH, OHIO STATE PLANE
 COORDINATE SYSTEM, NORTH ZONE, NAD83
 (2011, EPOCH 2010), WITH THE EASTERLY
 RIGHT-OF-WAY LINE OF HARDIN DRIVE,
 HAVING A BEARING OF N 07°12'34" W.

THIS SURVEY WAS PREPARED IN THE
 ABSENCE OF A COMPLETE AND ACCURATE
 TITLE SEARCH AND DOES NOT GUARANTEE
 TITLE.



Daniel A. Neer
 DANIEL A. NEER
 PROFESSIONAL SURVEYOR NO. 8533
 APRIL 13, 2020

COPYRIGHT 2020 BY:

 117 N. Madriver Street • Bellefontaine, OH 43311
 (937) 593-7335 • www.dlz.com
 Project #2021-2038.00

LEGEND

⊙ 1-3/4 INCH IRON PIPE FOUND	R/W = RIGHT-OF-WAY
⊠ 1/2 INCH SQUARE IRON BAR FOUND	C/L = CENTER-LINE
○ 5/8 INCH IRON ROD FOUND	V.M.S. = VIRGINIA MILITARY SURVEY
● 5/8 INCH BY 30 INCH IRON REBAR SET WITH PLASTIC I.D. CAP STAMPED "DLZ OHIO INC."	

RETRACEMENT SURVEY
 LOTS 58 & 59 AND PART OF
 VACATED CLARK DRIVE
 V.M.S. 9925-9946-10121
 WASHINGTON TOWNSHIP
 LOGAN COUNTY, OHIO

DRAWN BY:	DESCRIPTION	REV. NO.	DATE
KSS			4/14/2020

INDEXED ON MAP
 5830