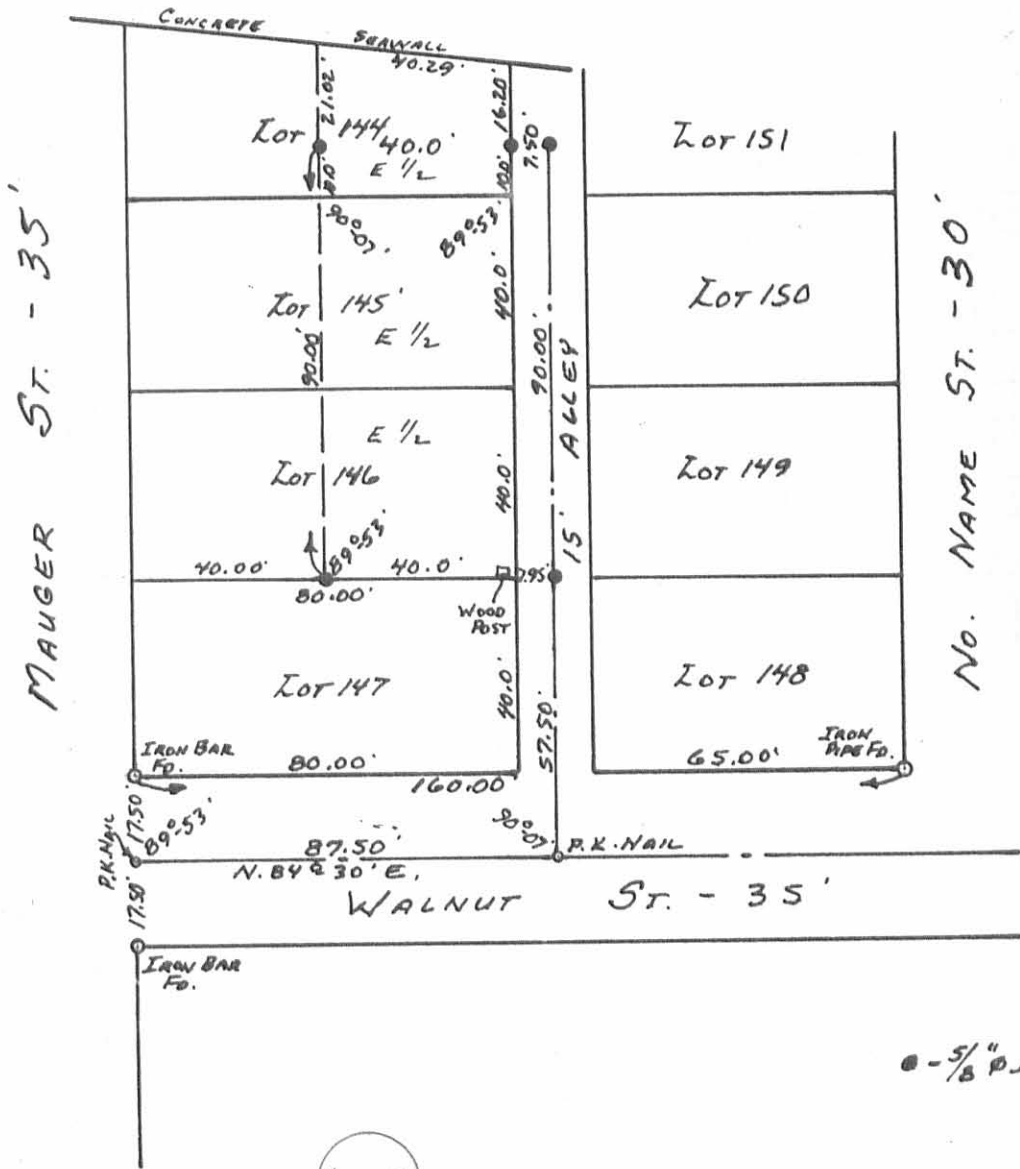


# INDIAN LAKE



● - 5/8" P. IRON BARS SET.

6038 IP

REFERENCE:  
 ORCHARD ISLAND PLAT.  
 PLAT BOOK B VOL. 2 P. 121.

~~WORKED ON MAP~~

FRANKLIN SURVEY  
 EAST HALF OF LOTS 144, 145, 146  
 ORCHARD ISLAND  
 SECTION 36 T. 6 S. R. 8 E.  
 WASHINGTON TOWNSHIP  
 LOGAN COUNTY, OHIO  
 MAY 21, 1977

SURVEYED AND PLATTED BY:  
 DANIEL E. GILBERT, P.S.  
 REG. SUR. NO. 5402  
 1041 N. MAIN ST.  
 BELLEFONTAINE, OHIO 43311

SCALE: 1" = 40'