

8-27-13

Lee Surveying and Mapping Co., Inc.

APPROVED Land Surveys • Topography • Subdivisions • Construction Layout

117 N. Madriver St.
Bellefontaine OH 43311



Phone: (937) 593-7335
Fax: (937) 593-7444
surveys@lsmcinc.us

STATE OF OHIO 3.759 ACRES

Lying in Section 35, Town 6 South, Range 8 East, Washington Township, Logan County, Ohio.

Being out of the Indian Lake Reservoir Lands and being more particularly described as follows:

Commencing at a concrete right-of-way monument found 30.00 feet left of Station 205+00 Per LOG-366-(3.03-4.12) Sheet 3 of 4.

THENCE, with the north right-of-way of Ohio Route 366 S 76°-32'-02"E, a distance of 44.44 feet to a 5/8 inch iron rod set at the TRUE POINT OF BEGINNING.

THENCE, N 13°-25'-28"E, a distance of 206.42 feet to a point, passing a 5/8 inch iron rod set at 197.91 feet.

THENCE, with the shore line of Indian Lake the following 18 courses:

- S 76°-34'-53"E, a distance of 59.88 feet to a point.
- S 78°-12'-51"E, a distance of 50.55 feet to a point.
- S 75°-11'-24"E, a distance of 49.62 feet to a point.
- S 77°-19'-00"E, a distance of 50.41 feet to a point.
- S 77°-32'-00"E, a distance of 49.21 feet to a point.
- S 74°-13'-29"E, a distance of 50.78 feet to a point.
- S 78°-36'-10"E, a distance of 49.58 feet to a point.
- S 75°-56'-21"E, a distance of 50.96 feet to a point.
- S 73°-57'-01"E, a distance of 11.19 feet to a point.
- S 73°-57'-01"E, a distance of 38.38 feet to a point.
- S 78°-50'-58"E, a distance of 49.52 feet to a point.
- S 80°-55'-22"E, a distance of 13.01 feet to a point.
- S 78°-12'-05"E, a distance of 37.40 feet to a point.
- S 75°-39'-36"E, a distance of 49.91 feet to a point.
- S 76°-59'-14"E, a distance of 49.76 feet to a point.
- S 76°-25'-11"E, a distance of 50.08 feet to a point.
- S 73°-44'-57"E, a distance of 50.55 feet to a point.
- S 74°-41'-01"E, a distance of 28.45 feet to a point.

INDEXED ON MAP
6310 12-1

Lee Surveying and Mapping Co., Inc.

Land Surveys • Topography • Subdivisions • Construction Layout

117 N. Madriver St.
Bellefontaine OH 43311



Phone: (937) 593-7335
Fax: (937) 593-7444
surveys@lsminc.us

THENCE, S 13°-26'-49"W, a distance of 205.56 feet to a 5/8 inch iron rod set, passing a 5/8 inch iron rod set at 13.00 feet.

THENCE, with the north right-of-way of Ohio Route 366, N 76°-32'-02"W, a distance of 788.82 feet to the point of beginning, passing a concrete right-of-way monument found (30.00 feet left of Station 212+00), at a distance of 133.18 feet.

Containing 3.759 acres.

Property is subject to any and all previous easements and rights-of-way of record.

The basis for bearings is north right-of-way of Ohio Route 366, being N 76°-32'-02"W, and all other bearings are from angles and distances measured in a field survey by Lee Surveying and Mapping Co., Inc. on August 21, 2013.

Description prepared by:

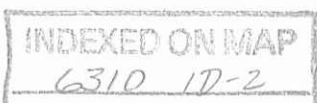
A handwritten signature in black ink that reads 'William K. Bruce'.

William K. Bruce
Professional Surveyor 7437
August 21, 2013



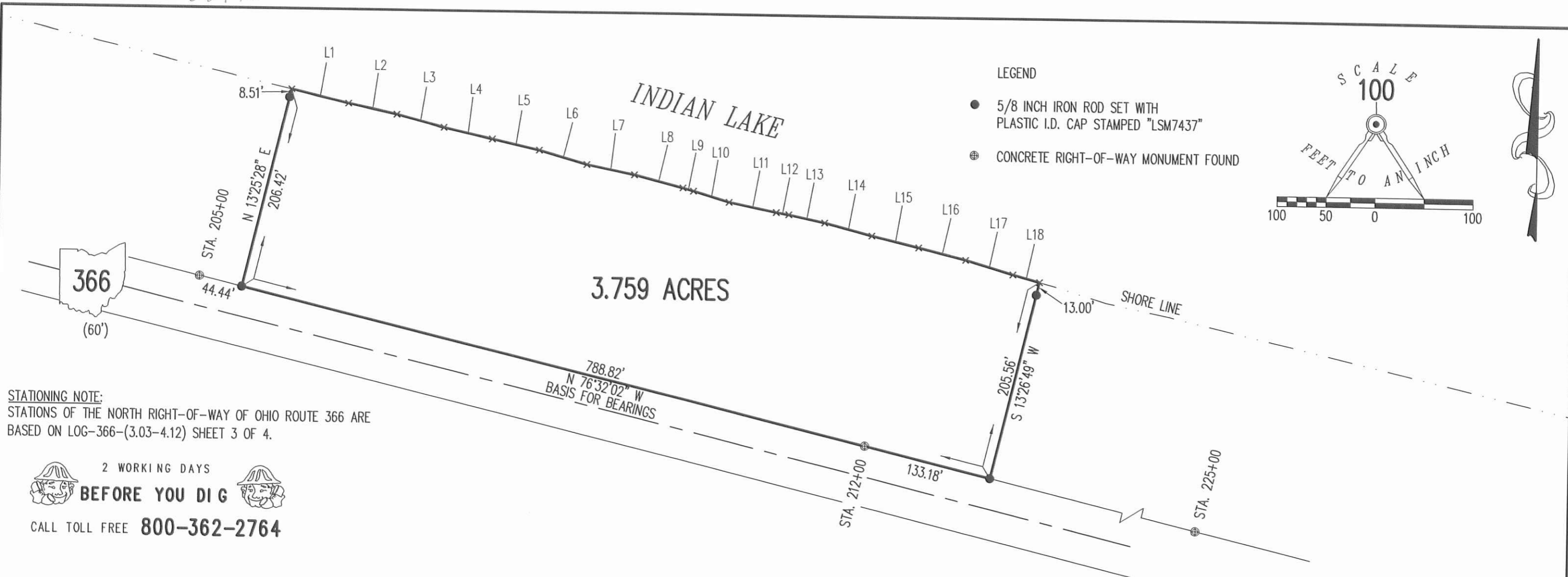
ORIGINAL STAMP IN GREEN

L-45360713



✓ APPROVED

8-27-13



STATIONING NOTE:
STATIONS OF THE NORTH RIGHT-OF-WAY OF OHIO ROUTE 366 ARE
BASED ON LOG-366-(3.03-4.12) SHEET 3 OF 4.

2 WORKING DAYS
BEFORE YOU DIG
CALL TOLL FREE **800-362-2764**

LINE	BEARING	DISTANCE
L1	S 76°34'53" E	59.88'
L2	S 78°12'51" E	50.55'
L3	S 75°11'24" E	49.62'
L4	S 77°19'00" E	50.41'
L5	S 77°32'00" E	49.21'
L6	S 74°13'29" E	50.78'
L7	S 78°36'10" E	49.58'
L8	S 75°56'21" E	50.96'
L9	S 73°57'01" E	11.19'
L10	S 73°57'01" E	38.38'
L11	S 78°50'58" E	49.52'
L12	S 80°55'22" E	13.01'
L13	S 78°12'05" E	37.40'
L14	S 75°39'36" E	49.91'
L15	S 76°59'14" E	49.76'
L16	S 76°25'11" E	50.08'
L17	S 73°44'57" E	50.55'
L18	S 74°41'01" E	28.45'

A SURVEY OF A 3.759 ACRE TRACT OUT OF THE
INDIAN LAKE RESERVOIR LANDS
SECTION 35, TOWN 6 SOUTH, RANGE 8 EAST
WASHINGTON TOWNSHIP
LOGAN COUNTY, OHIO



SURVEYED BY:
William K. Bruce
WILLIAM K. BRUCE
PROFESSIONAL SURVEYOR 7437
AUGUST 21, 2013

COPYRIGHT 2013 BY:
LEE SURVEYING & MAPPING CO., INC.
117 North Madriver Street
BELLEFONTAINE, OHIO 43311
(937) 593-7335
WWW.LSMINC.US
surveys@lsminc.us

ADW D0713 DOCKBOUND L-4536-3

INDEXED ON MAP
6310 1P