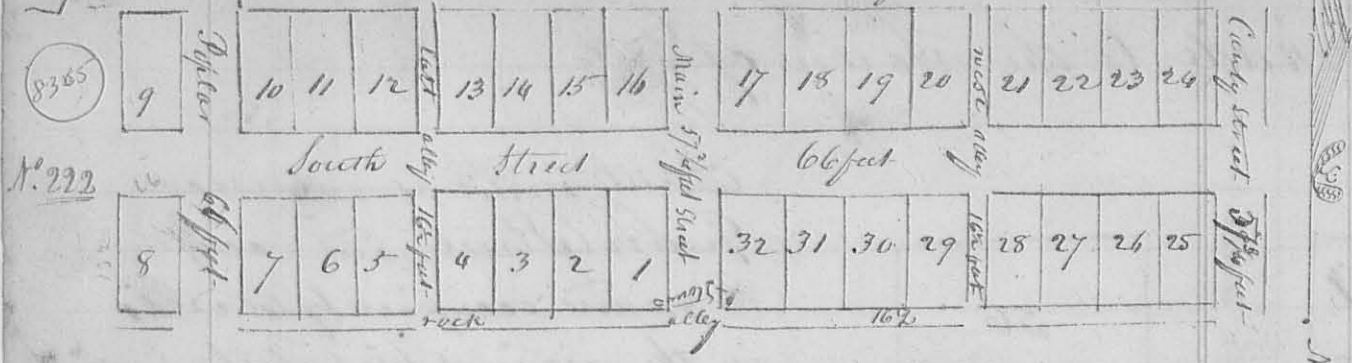


199

South Addition to Quincy

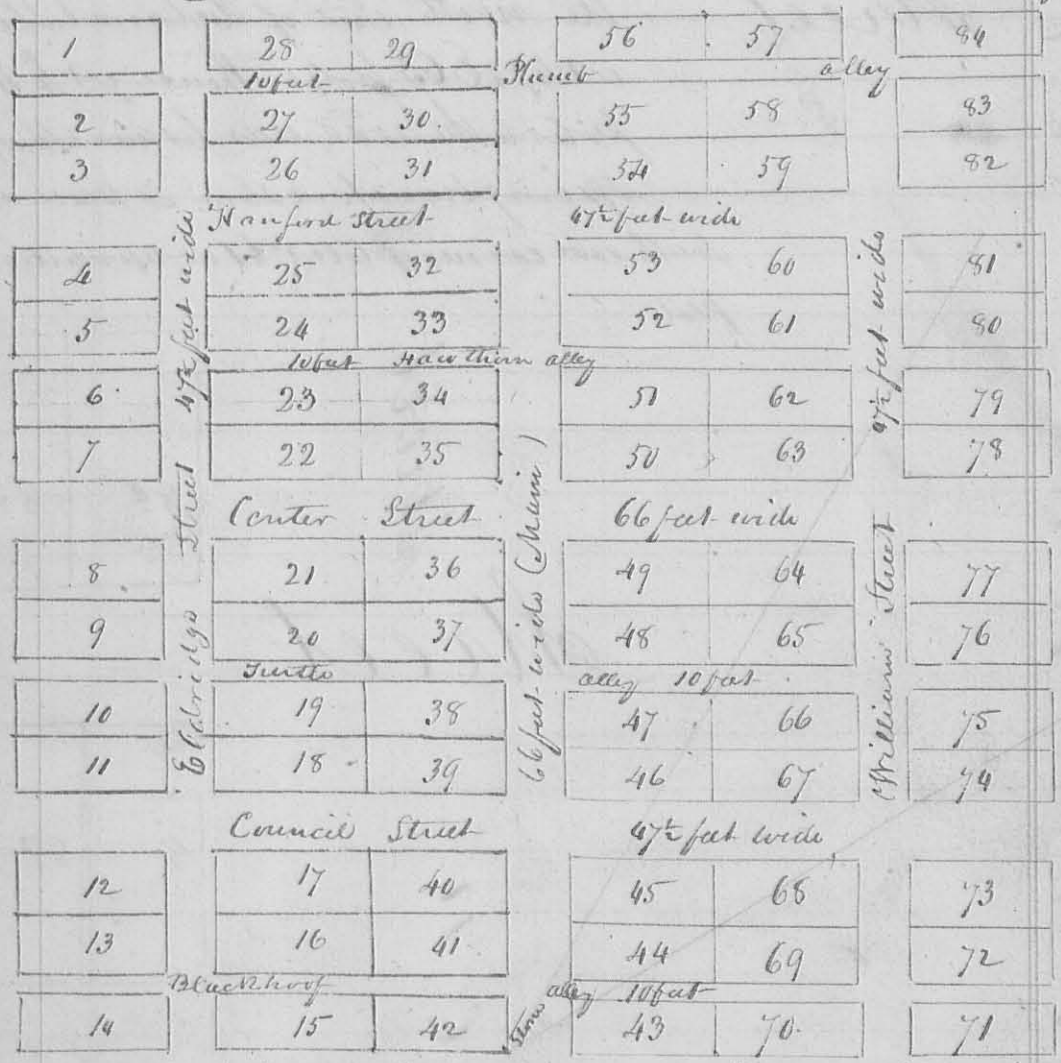


Surveyed May 2nd & 3rd 1833 the South Addition to Quincy by James R Baldwin as shown by the foregoing plat pursuing the plan of the old town. Made South Street 66 feet wide, extended Candy Main & Poplar Streets east & west alley the width of each as marked on the plat the lots are 8 rods long by 4 in width, and front on South Street, extending north & west to rock alley, and South 5 rods to the South line of the town. At the NW corner of lot 19 planted a stone for the plat
 Dan Hopkins depy Sur. G.

N^o 223

Lewisstown & Plat located on the N.E. q. of 34th 7th R8E

8306



This plat represents the survey of Lewisstown located on the lands of Henry Handfort, proprietor, on the site of the old Indian town of Lewisstown. The corners of the streets begining at a stone N.E. corner of lot N^o 1 in N 60th & at right angles. The lots front on the streets 50 feet & extend back 150 feet all being of the same size, alley each 10 feet wide as marked on the plat. Streets also as marked on the plat Surveyed Aug^t 6th y^t 1833
 Dan Hopkins depy Sur.