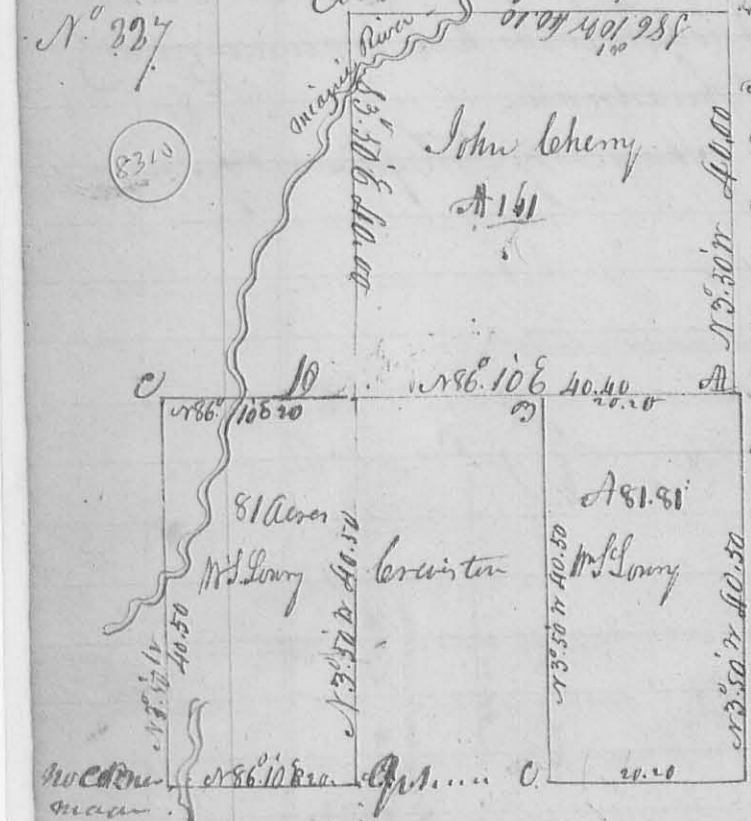


Sept. 14th 1833 Sub-divided Section N. 72 & 12
 T. 9 R. 8 E for Wm. S. Lowry & others as follows -
 the South half of S. 12 and E. half of the S. E. q. of S. 13
 for Wm. S. Lowry as shown by the Plat with the length
 of the lines therein marked in form of old chains -
 Course of the lines S. 50 W of a true meridian -
 also at the same time surveyed the SW q. of S.
 13 for Isaac Cooper shown as above, also the
 West half of the S. E. q. of S. 13 for Joseph
 also the SW q. and West half of the S. E. q. of S. 13
 for Penick, containing each as marked
 for quantity on the Plat
 D. Hopkins depy. Surveyor G.



Description of Corners - Corner at
 A. Beech 82 S 22 E 24 Links 61 W N 13 W 11 E
 B. 92 E 182 S 41 E 21 B. Ark 20 " N 33 W 20 Links
 C. Ark 18 " N 26 W 37 92 Ark 22 " S 22 E 49 Links
 D. Hornwood 3 W 166 W 13 B. Ark. 0. 15 " N 3 W 24 -
 Surveyed for Jno. Leheny Sept. 14. 1833

Beginning
 description of the Corners of Mrs. Lowry's lot being
 E. half S. E. q. of above section. Beginning as above
 B. Beech 182 W 170 W 8 E. Red oak 24. 9. 51 E 20 E
 C. Ark 61 W 88 E 15 E Beech 122 W East 19 E
 D. SW Corners of 12. 16 of M. Surveyed as above -
 also Surveyed for Mrs. Lowry another lot
 as shown below, lying West of corner ten - lot

being E. half of SW q. of the foregoing section, Corners & dist. marked on the plat -
 Description of corners at A. Ark 202 W N 11 W 36 E. M. O. 182 W S 7 E 30 E.
 Corner at B. Red Elm 242 W N 10 W 16 E. Hickory 122 W S 47 E 28
 do at C. Maple 182 W S 41 W 25. Ark 182 W N 52 W 22
 do at D. Hornwood 2 W 166 W 13 B. Ark. 0. 15 W N 3 W 24 -
 The foregoing plat represents one Survey the lands all lie springing and were Surveyed
 as one Survey Sept. 15th 1833
 D. Hopkins depy. Surveyor G.