

198

N^o 234

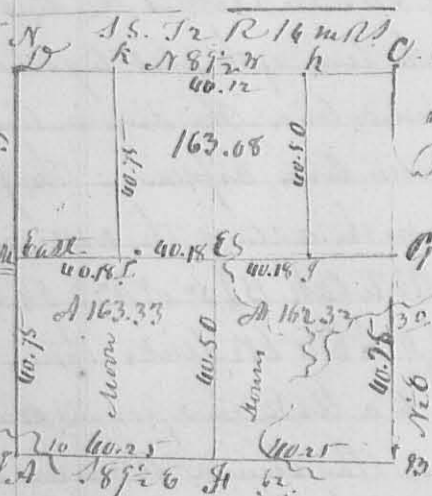
8318



This Plat represents the NW 1/4 of S⁴ T² R¹⁴ W¹⁰ Surveyed for James Hook July 16th 1834 beginning at a W. O. Stump 88^o South of links and N. O. the 18^o N 42^o W 31 Links. in turn come represented A on the plat. then North 40 ch. 50 links to In Royer S. E. corner then West 40 ch 50 Links to the NW corner of the section. then South 40 ch 50 Links to cherry 2^o N 75^o W 62 Links and cherry 2^o E 122^o W 62 Links then East 40 ch. 50 Links to the beginning containing 164 ^{1/100} acres Lewis & James Hook ch. & amin. D Hopkins Surveyor.

N^o 235

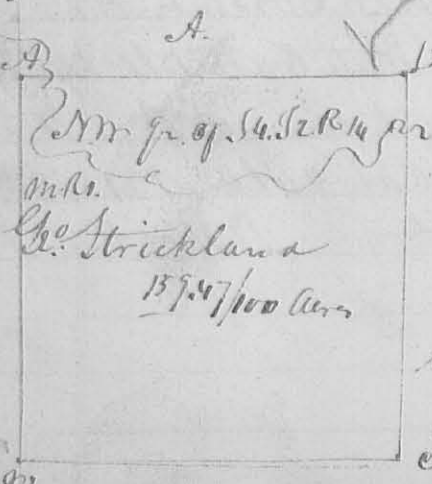
8319



This plat represents the sub. division of S⁵ T² R¹⁴ W¹⁰ Surveyed Feb^y 5. 1835 for Adam Moore, Mr. Price & David Down, beginning as above at the NW corner of the Section, then with the course and distances as marked on the lines from A to B. of the division line running parallel to the section line, varying so as to close. the description of the corners as follows: A. NW corner of the section. B. Stake in prairie. C. White Oak 22^o E 136^o W 60 Links. White Oak 12^o E 176^o W 78 Links. a stump. D. Stake in prairie. E. Stake in prairie. F. White Oak 22^o E 174^o W 18 Links. G. 22^o E 145^o E 28 links. H. White Oak 8^o E 53^o W 91 Links. I. 12^o E 170^o E 78 Links. J. White Oak. 36^o E West 34^o Links. K. Hickory 18^o E 134^o E 39 Links. L. Hickory 18^o E 176^o W 70 Links. M. Black Oak 18^o E 126^o W 34 Links. The orig. corner here is not to be found. John Moore. Alfred Matthews ch. D Hopkins Surveyor.

N^o 236

8320



This plat represents the NW 1/4 of S⁴ T² R¹⁴ W¹⁰ Surveyed as follows beginning at NW corner of the section then S. W. 37.50 ch. to orig. gr. corner. then S. 87^o E. 40 ch. to Stake. come to John & David Moore. then N. 74^o E. 40 ch. to a stake in a prairie. then with the north line of said section West 40.25 to the beginning containing 157 ^{1/100} acres M. Price David D. & David ch. D Hopkins Surveyor.

Feb 7. 1834