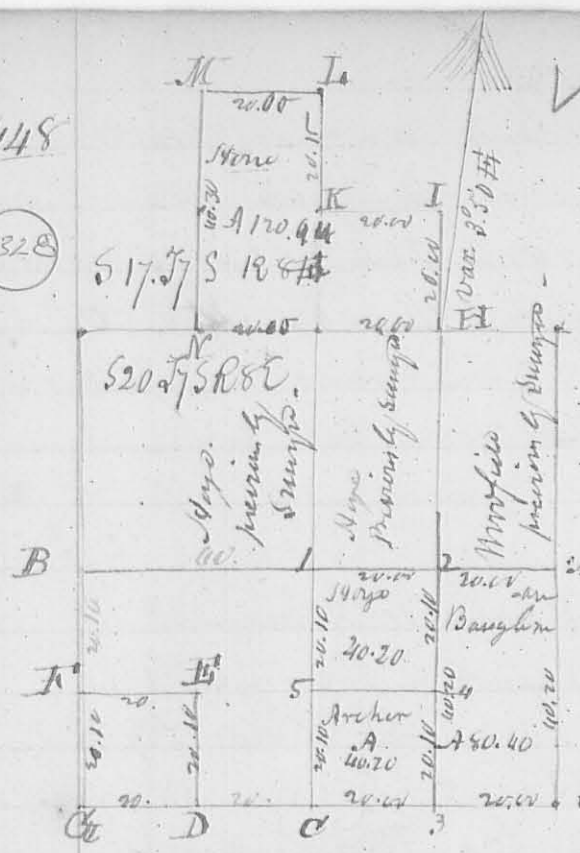


N<sup>o</sup> 148

(8328)



The annexed Diagram represents the Survey of part of Sect 20. T<sup>7</sup> S R 8 E for William Baughman & others, and part of S<sup>17</sup> T<sup>7</sup> S R 8 E SW q. & SW q. of S E q. of same Section for Henry & sons. Bearing of the line N 3.50 W. These line only were Surveys which are marked with the proper lengths. The other were previously Surveys and are Recorded on page 202.

Description of Corner -

A Original Quarter S. Corner, planted a Large Stone, corner to Veff & others -

1. Hickory 22 S. D. S 85 W 31 1/2 Links, Birch 12 S. D. N 40 W 17 Links
  2. Birch 24 " " N 30 W 23 " ditto 18 " " S 57 E 26 ditto
  3. Wh. Oak 20 " " N 82 E 24 " ditto 20 " " S 19 W 19 ditto
  4. R. Oak 2 " " S. 61 E 5 " Dogwood 3 " N 56 W 24 ditto
  5. Bl. Ash 5 " " S 58 W 21 " Bl. Ash 3 " N 57 E 18 ditto.
- C. Original Quarter Section corner on the South line of the Section -
- D Birch 29 S. D. N 30 E 22 Links, Birch 18 S. D. S 42 W 42 Links.
- H ditto 8 " " S 12 W 19 " ditto 12 " " N 39 E 9 ditto
- F ditto 4 " " S 35 W 12 " Elm 8 " " N 47 E 13 ditto.
- Ct Sect corner ..
- H Birch 10 " " S 61 E 24 " Gum 10 " " S 88 W 13 ditto
- I Wh. Ash 6 " " S 12 W 28 " Wh. Ash 12 " " N 37 W 25 ditto
- K Elm 15 " " S 8 E 26 " Gum 3 " " N 22 E 16 ditto
- L Gum 6 " " N 57 E 17 " ditto 6 " " N 82 W 5 ditto
- M Hickory 15 " " S 11 E 22 " Birch 20 " " N 31 E 15 ditto
- N Bl. Ash 8 " " S 20 W 27 " Nat. Birch 3 " " N 16 E 35 ditto
- Survey April 13. 1839
- Land Office S. D. C.

449

(8457)

Survey April 20. 1839 for Michael Trent part of Nancy Neavants Section as follows, Beginning the Ellwood SW corner, Birch Oak 22 S. D. N 50 W 44 Links, Birch Oak 24 S. D. N 6 E 30 Links, then S 83 W 36.75 ch. to a white oak 15 S. D. N 8 E 64 Links, Ash 12 S. D. S 57 W 20; on bank of Miami then with the meander of the river bottom.

N 46. 2.18 ch.; N 25 1/2 W 1.16 ch.; N 37 1/2 W 2.58 ch.; N 32 1/2 W 6.22 ch.  
 N 25 E 5.60; N 2 1/2 W 3.80 ch. to Corner of Stewart's Section, Pigeon  
 Oak 15 L.D. S 4 1/2 W 27 Links; Pigeon Oak 24 L.D. S 55 E 30 L.  
 thence N 82 E 33.20 chain to White Oak 30 L.D. S 18 1/2 E 27 1/2 Links;  
 and White Oak 20 L.D. S 32 W 32 Links thence 520 & 20 chain to  
 the beginning containing 69.20 acs. (Calculation made and  
 plat handed to Grant)

N<sup>o</sup> 450

8453

Survey May 18. 1839 for Daniel McKinnin the N 1/2 of  
 S.E. q. & part of S.E. q. of E 1/4 of S.W. q. of S 4. 7 1/2 R 8 E  
 Beginning at S.W. Corner to John Gish; thence S 85 W 28 chain  
 to a Beech 22 L.D. S 85 W 13 Links; Iron arrow 2 L.D. N 80 E  
 26 Links; thence N 5 W 25 chain to a Stem; thence N 85 E 8 chain  
 to a Stem, ~~then~~ Bur Oak 14 L.D. S 6 W 25 Links; Bur O  
 14 L.D. N 71 1/2 E 28 Links; thence N 5 W 14.75 chain to S.W.  
 5 L.D. N 32 W 28 Links Oak 12 L.D. East 35 Links. Thence  
 N 85 E 1.20 ch to John Hill, S.W. Corner. thence N 85 E w. road  
 to Gish, N.W. Corner, a Beech 20 L.D. N 52 E 11 Links, Iron 4  
 L.D. S 52 W 7 Links; thence S 1/2 E 40 chain to the beginning -  
 Containing 103.75 acs. for further description of Corner, see  
 Return for Link and other, page 224-

Daniel McKinnin & Co Surveyors

451

8454

Survey May 4. 1839 part of Survey N<sup>o</sup> 3688. Begin  
 ning at 2 Beech & Sugar. Original beginning corner to the  
 Survey; thence N 38 W 282 poles to a stake near a Hickory  
 & Beech. Corner to Henry Morris; thence S 52 W 213 1/2 poles  
 to a stake in the West line of the Survey near a Beech.  
 thence S 37 E 280 poles to 2 Beech & small Sugar, thence  
 N 52 E 218 poles to the beginning, Containing 378 1/2 acs.  
 D. McKinnin, S. L. C. O.