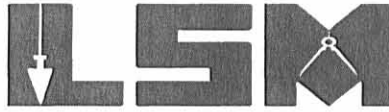


# Lee Surveying and Mapping Co., Inc.

Land Surveys • Topography • Subdivisions • Construction Layout



117 N. Madriver St.  
Bellefontaine OH 43311

Phone: (937) 593-7335  
Fax: (937) 593-7444

**1975-2005 - 30 YEARS OF EXCELLENCE**

**HOWARD  
9.000 ACRES**

Lying in Virginia Military Survey 12168, Washington Township, Logan County, Ohio.

Being out of the Helen I. Howard and Charles Lowell Howard, Trustees, 74.55 acre tract as deeded and described in Official Record 356, Pages 447 and 442, Tract III of the Logan County Records of Deeds and being more particularly described as follows:

Beginning on a pony spike found on the northwest corner of Virginia Military Survey 12168 at the intersection of center-lines of Ohio Route 274 and Township Road 94.

THENCE, with the north line of Virginia Military Survey 12168 and the center-line of Ohio Route 274 (50 feet wide), N 82°-42'-00"E, a distance of 502.92 feet to a MAG nail set.

THENCE, with the west line of the Howard Seven Farm, Inc., 48.13 acre tract (O.R. 860, Pg. 163, Tract III), S 19°-44'-06"E, a distance of 796.09 feet to a 5/8 inch iron rod set, passing a 5/8 inch iron rod set at 25.60 feet.

THENCE, S 82°-42'-00"W, a distance of 505.67 feet to a 5/8 inch iron rod set on the west line of Virginia Military Survey 12168.

THENCE, with the west line of Virginia Military Survey 12168 and the east line extended and the east line of the Helen I. Howard and Charles Lowell Howard, Trustees, 19.08 acre tract (O.R. 356, Pg 447 and O.R. 356, Pg. 442, Tract II), N 19°-32'-30"W, a distance of 795.50 feet to the point of beginning, passing a 5/8 inch iron rod set at 769.92 feet.

Containing 9.000 acres, of which 0.289 acre is within the highway right-of-way.

The basis for bearings is the north line of Virginia Military Survey 12168, being N 82°-42'-00"E, and all other bearings are from angles and distances measured in a field survey by Lee Surveying and Mapping Co., Inc. on February 20, 2007.

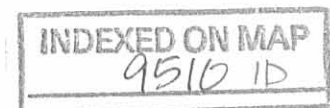


ORIGINAL STAMP IN GREEN

Description prepared by:

William K. Bruce  
Professional Surveyor 7437  
February 20, 2007

4372027



REC'D 2-22-07 SMY OK

TOWNSHIP ROAD 94

V.M.S. 12052

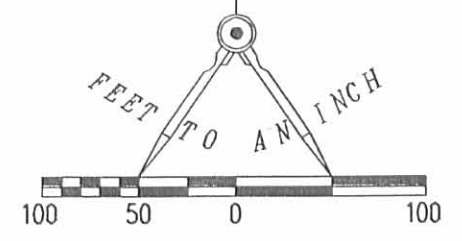
V.M.S. 12168

274

(50')

(BASIS FOR BEARINGS)  
N 82°42'00" E  
502.92'

SCALE  
100



LEGEND:

- ⊗ PONY SPIKE FOUND
- MAG NAIL SET
- 5/8 INCH IRON ROD SET

ROBERTS LINE

9.000 ACRES

OF WHICH 0.289 ACRE IS WITHIN  
THE HIGHWAY RIGHT-OF-WAY

HOWARD SEVEN FARM, INC.  
48.13 ACRES  
O.R. 860, PG. 163  
TRACT III

SURVEY OF 9.000 ACRES OUT OF THE  
HELEN I. HOWARD AND  
CHARLES LOWELL HOWARD,  
TRUSTEES

74.55 ACRE TRACT  
OFFICIAL RECORD 356, PAGE 447  
OFFICIAL RECORD 356, PAGE 442  
TRACT III  
VIRGINIA MILITARY SURVEY 12168  
WASHINGTON TOWNSHIP  
LOGAN COUNTY, OHIO

HELEN I. HOWARD AND  
CHARLES LOWELL HOWARD,  
TRUSTEES  
19.08 ACRES  
O.R. 356, PG. 447  
O.R. 356, PG. 442  
TRACT II

HELEN I. HOWARD AND  
CHARLES LOWELL HOWARD,  
TRUSTEES  
74.55 ACRES  
O.R. 356, PG. 447  
O.R. 356, PG. 442  
TRACT III

SURVEYED BY:

*William K. Bruce*  
WILLIAM K. BRUCE  
PROFESSIONAL SURVEYOR 7437  
FEBRUARY 20, 2007



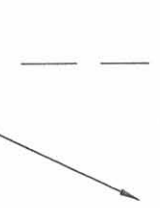
ORIGINAL STAMP IN GREEN

COPYRIGHT 2007 BY:  
LEE SURVEYING & MAPPING CO., INC.  
117 North Madriver Street  
BELLEFONTAINE, OHIO 43311  
(937) 593-7335  
KSR D0207 4372027 L-4372-3

HELEN I. HOWARD AND  
CHARLES LOWELL HOWARD,  
TRUSTEES  
74.55 ACRES  
O.R. 356, PG. 447  
O.R. 356, PG. 442  
TRACT III

INDEXED ON MAP  
9510 IP

2 WORKING DAYS  
**BEFORE YOU DIG**  
CALL TOLL FREE **800-362-2764**  
OHIO UTILITIES PROTECTION SERVICE.



7  
18

505.67  
S 82°42'00" W

N 02°32'30" W  
795.50'

VIRGINIA MILITARY SURVEY 12168

N 19°32'30" W  
795.50'

S 19°44'06" E  
786.09'

25.38'

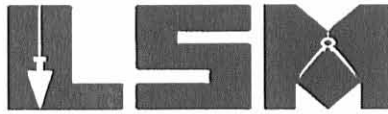
25.60'

REV'D 7-10-06 SMJ OK

# Lee Surveying and Mapping Co., Inc.

Land Surveys • Topography • Subdivisions • Construction Layout

117 N. Madriver St.  
Bellefontaine OH 43311



Phone: (937) 593-7335  
Fax: (937) 593-7444

**1975-2005 - 30 YEARS OF EXCELLENCE**

**HOWARD  
0.507 ACRE**

Lying in Fractional Sections 7 & 18, Town 7, Range 9, Washington Township, Logan County, Ohio.

Being out of the Helen I. Howard and Charles Lowell Howard, Trustees original 19.08 acre tract and 74.55 acre tract as deeded and described in Official Record 356, Page 447, Tract II and Tract III of the Logan County Records of Deeds and being more particularly described as follows:

Beginning at a railroad spike found (Logan County Engineer's Station 116+49 "X-6" map 2 of 5, field book 574, pg. 33) at the intersection of center-lines of Township Road 94 and Ohio Route 274.

THENCE, with the center-line of Ohio Route 274 (60 feet wide), S 74°-53'-00"W, a distance of 1110.99 feet to a point at the TRUE POINT OF BEGINNING.

THENCE, S 5°-24'-40"E, a distance of 697.17 feet to a 5/8 inch iron rod set, passing a 5/8 inch iron rod set at 30.44 feet.

THENCE, N 86°-50'-04"W, a distance of 64.10 feet to a 5/8 inch iron rod found.

THENCE, with the east line of the John Shaner and Nicole L. Shaner 4.298 acre tract (O.R. 786, Pg. 155), N 0°-08'-41"W, a distance of 690.53 feet to the point of beginning, passing a 5/8 inch iron rod set at 659.48 feet.

Containing 0.507 acre, of which 0.001 acre is within the highway right-of-way. 0.199 acre is in Fractional Section 7 and 0.308 acre is in Fractional Section 18.

The basis for bearings is the center-line of Ohio Route 274, being N 74°-53'-00"E, and all other bearings are from angles and distances measured in a field survey by Lee Surveying and Mapping Co., Inc. on July 6, 2006.

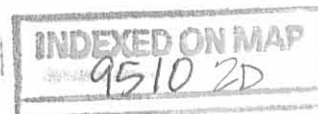


ORIGINAL STAMP IN GREEN

Description prepared by:

Jeffrey I. Lee  
Professional Surveyor 6359  
July 6, 2006

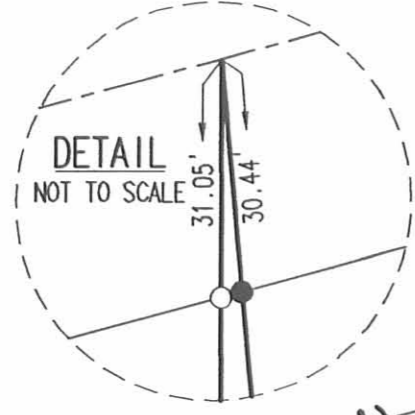
4031076



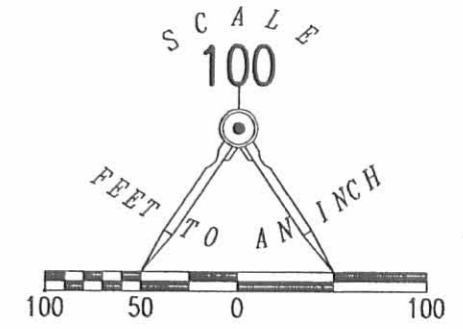
REV'D 7-10-06 SMM/OK

**NOTE:**

UNABLE TO SET MONUMENTS ON CENTER OF ROAD DUE TO HEAVY TRAFFIC.



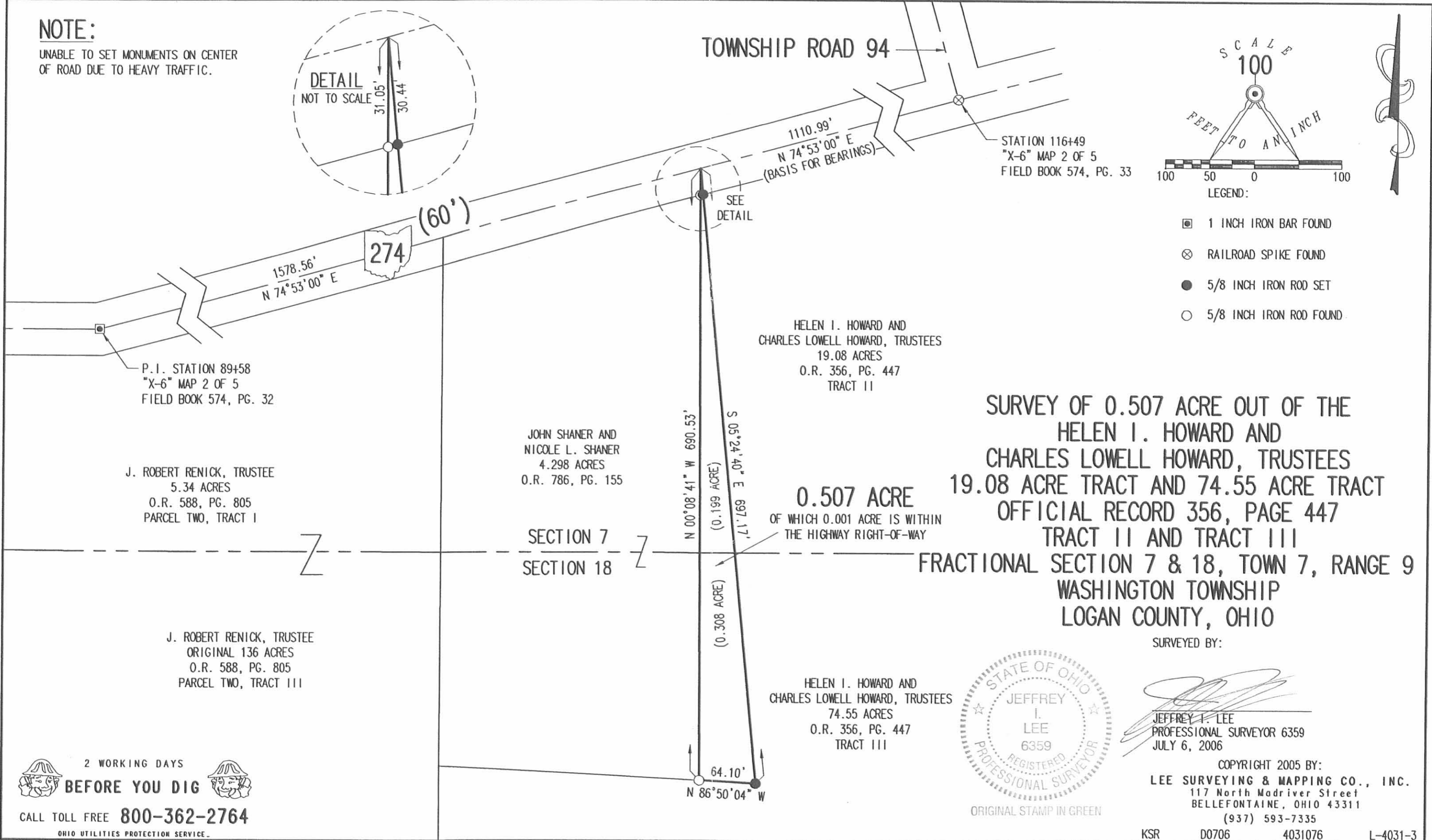
TOWNSHIP ROAD 94



SCALE  
100  
FEET TO 1 INCH

LEGEND:

- 1 INCH IRON BAR FOUND
- ⊗ RAILROAD SPIKE FOUND
- 5/8 INCH IRON ROD SET
- 5/8 INCH IRON ROD FOUND



P.I. STATION 89+58  
"X-6" MAP 2 OF 5  
FIELD BOOK 574, PG. 32

J. ROBERT RENICK, TRUSTEE  
5.34 ACRES  
O.R. 588, PG. 805  
PARCEL TWO, TRACT I

J. ROBERT RENICK, TRUSTEE  
ORIGINAL 136 ACRES  
O.R. 588, PG. 805  
PARCEL TWO, TRACT III

JOHN SHANER AND  
NICOLE L. SHANER  
4.298 ACRES  
O.R. 786, PG. 155

HELEN I. HOWARD AND  
CHARLES LOWELL HOWARD, TRUSTEES  
19.08 ACRES  
O.R. 356, PG. 447  
TRACT II

0.507 ACRE  
OF WHICH 0.001 ACRE IS WITHIN  
THE HIGHWAY RIGHT-OF-WAY

HELEN I. HOWARD AND  
CHARLES LOWELL HOWARD, TRUSTEES  
74.55 ACRES  
O.R. 356, PG. 447  
TRACT III

SURVEY OF 0.507 ACRE OUT OF THE  
HELEN I. HOWARD AND  
CHARLES LOWELL HOWARD, TRUSTEES  
19.08 ACRE TRACT AND 74.55 ACRE TRACT  
OFFICIAL RECORD 356, PAGE 447  
TRACT II AND TRACT III  
FRACTIONAL SECTION 7 & 18, TOWN 7, RANGE 9  
WASHINGTON TOWNSHIP  
LOGAN COUNTY, OHIO

SURVEYED BY:

*Jeffrey I. Lee*  
JEFFREY I. LEE  
PROFESSIONAL SURVEYOR 6359  
JULY 6, 2006



ORIGINAL STAMP IN GREEN

COPYRIGHT 2005 BY:  
LEE SURVEYING & MAPPING CO., INC.  
117 North Madriver Street  
BELLEFONTAINE, OHIO 43311  
(937) 593-7335

KSR D0706 4031076 L-4031-3

2 WORKING DAYS  
BEFORE YOU DIG  
CALL TOLL FREE 800-362-2764  
OHIO UTILITIES PROTECTION SERVICE.

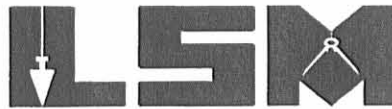
INDEXED ON MAP  
9510 2P

REC'D 6-29-05 8M/AL

# Lee Surveying and Mapping Co., Inc.

Land Surveys • Topography • Subdivisions • Construction Layout

117 N. Madriver St.  
Bellefontaine OH 43311



Phone: (937) 593-7335  
Fax: (937) 593-7444

**1975-2005 - 30 YEARS OF EXCELLENCE**

**HOWARD  
4.298 ACRES**

Lying in Fractional Sections 7 & 18, Town 7, Range 9, Washington Township, Logan County, Ohio.

Being out of the Helen I. Howard and Charles Lowell Howard, Trustees 19.08 acre tract and 74.55 acre tract as deeded and described in Official Record 356, Page 447, Tract II and Tract III of the Logan County Records of Deeds and being more particularly described as follows:

Beginning at a railroad spike found (station 116+49 "X-6" map 2 of 5 field book 574, pg. 33) at the intersection of center-lines of Township Road 94 and Ohio Route 274.

THENCE, with the center-line of Ohio Route 274 (60 feet wide), S 74°-53'-00"W, a distance of 1110.99 feet to a point at the TRUE POINT OF BEGINNING.

THENCE, S 0°-08'-41"E, a distance of 690.53 feet to a 5/8 inch iron rod set, passing a 5/8 inch iron rod set at 31.05 feet.

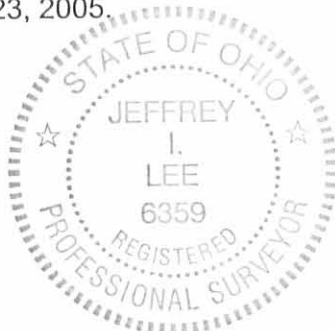
THENCE, N 86°-50'-04"W, a distance of 292.87 feet to a 5/8 inch iron rod set.

THENCE, with the east line of the J. Robert Renick, Trustee original 136 acre tract and 5.34 acre tract (O.R. 588, Pg. 805, Parcel Two, Tracts III and I), N 0°-06'-07"E, a distance of 596.12 feet to a point in the center-line of Ohio Route 274, passing a 5/8 inch iron rod set at 565.03 feet.

THENCE, with the center-line of Ohio Route 274, N 74°-53'-00"E, a distance of 300.00 feet to the point of beginning.


Containing 4.298 acres, of which 0.207 acre is within the highway right-of-way. 2.628 acres are in Fractional Section 7 and 1.670 acres are in Fractional Section 18.

The basis for bearings is the center-line of Ohio Route 274, being N 74°-53'-00"E, and all other bearings are from angles and distances measured in a field survey by Lee Surveying and Mapping Co., Inc. on June 23, 2005.

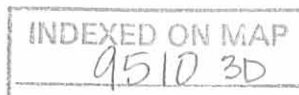


ORIGINAL STAMP IN GREEN

Description prepared by:

  
Jeffrey I. Lee  
Professional Surveyor 6359  
June 24, 2005

L-4031



REC'D 6-29-05 SML OK

**NOTE:**

UNABLE TO SET MONUMENTS ON CENTER OF ROAD DUE TO HEAVY TRAFFIC.

TOWNSHIP ROAD 94

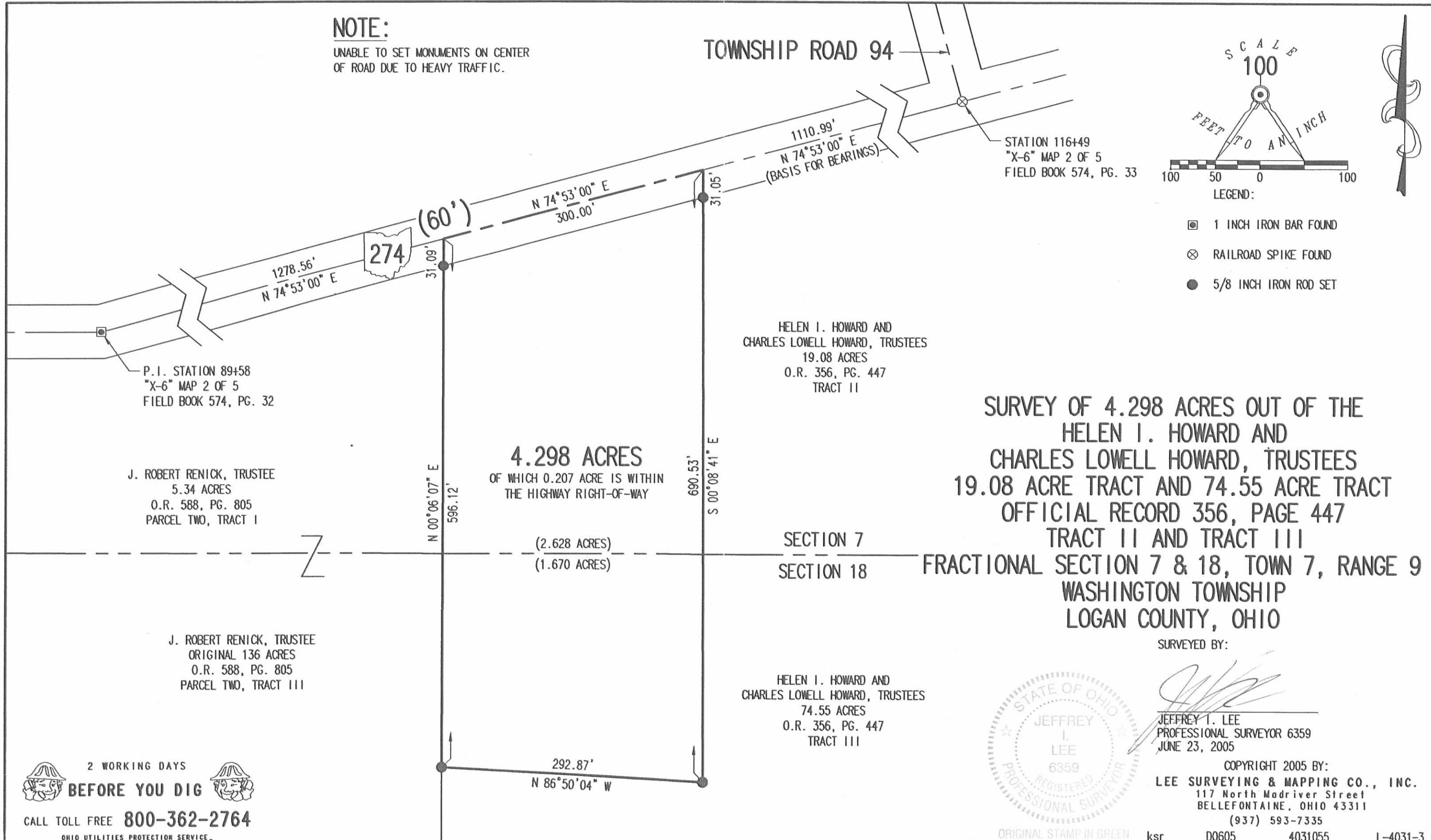
SCALE  
100

F E E T  
T O  
I N C H



LEGEND:

- ⊠ 1 INCH IRON BAR FOUND
- ⊗ RAILROAD SPIKE FOUND
- 5/8 INCH IRON ROD SET



P.I. STATION 89+58  
"X-6" MAP 2 OF 5  
FIELD BOOK 574, PG. 32

J. ROBERT RENICK, TRUSTEE  
5.34 ACRES  
O.R. 588, PG. 805  
PARCEL TWO, TRACT I

J. ROBERT RENICK, TRUSTEE  
ORIGINAL 136 ACRES  
O.R. 588, PG. 805  
PARCEL TWO, TRACT III

HELEN I. HOWARD AND  
CHARLES LOWELL HOWARD, TRUSTEES  
19.08 ACRES  
O.R. 356, PG. 447  
TRACT II

4.298 ACRES  
OF WHICH 0.207 ACRE IS WITHIN  
THE HIGHWAY RIGHT-OF-WAY

(2.628 ACRES)  
(1.670 ACRES)

HELEN I. HOWARD AND  
CHARLES LOWELL HOWARD, TRUSTEES  
74.55 ACRES  
O.R. 356, PG. 447  
TRACT III

SURVEY OF 4.298 ACRES OUT OF THE  
HELEN I. HOWARD AND  
CHARLES LOWELL HOWARD, TRUSTEES  
19.08 ACRE TRACT AND 74.55 ACRE TRACT  
OFFICIAL RECORD 356, PAGE 447  
TRACT II AND TRACT III  
SECTION 7 & 18, TOWN 7, RANGE 9  
WASHINGTON TOWNSHIP  
LOGAN COUNTY, OHIO

SURVEYED BY:

*Jeffrey T. Lee*  
JEFFREY T. LEE  
PROFESSIONAL SURVEYOR 6359  
JUNE 23, 2005



COPYRIGHT 2005 BY:  
LEE SURVEYING & MAPPING CO., INC.  
117 North Madriver Street  
BELLEFONTAINE, OHIO 43311  
(937) 593-7335

2 WORKING DAYS  
**BEFORE YOU DIG**  
CALL TOLL FREE **800-362-2764**  
OHIO UTILITIES PROTECTION SERVICE

INDEXED ON MAP  
9510 3P