

Centerline Curve Data - U.S.R. No. 68 (Plan L-31)

P.I. Sta. No. 466+71.04
P.C. Sta. No. 464+55.55
P.T. Sta. No. 468+81.55
 $\Delta = 21^{\circ}-18'$ Rt.
D = 59'-00"
T = 215.49'
R = 1145.92'
L = 426.00'
E = 20.09'

S. Detroit St.

P.I. Sta. No. 466+71.04

U.S.R. No. 68

Omar E. Jacobs et ux
O. R. No. 196 P. 65 (7-9-1993)
20-144-12-23-006.000

0.40 Acres

12.0' R/W

James P. Hostetler et al
Vol. No. 292 P. 269 (10-23-1963)
20-144-12-23-007.000

0.49 Acres

Robert N. Lingrel
O. R. No. 236 P. 299 (6-30-1994)
20-144-12-23-009.000

0.79 Acres

Thoman's
I. G. A. Store
Original Building

Addition

Concrete
Block
Building

Freezer

Addition

Loading Dock

Loading Area

Old Round
Wood Corner
Post Fd.

Helen Thoman
Vol. No. 400 P. 344 (5-25-1983)
20-144-16-03-001.000

7.716 Acres

Reference Deed:

Thoman Brothers Super Market, Inc.
O. R. No. 5 P. 622 (7-23-1995)
Per. Par. No. 20-144-12-23-008.000 - 1.136 Acres.

Symbols:

- - 5/8" Rebars Fd.
- - 5/8" x 30" Rebars Set.
- ⊙ - 1" Round Iron Bar Fd. (Ford Axle).

INDEXED ON MAP
3271 1P



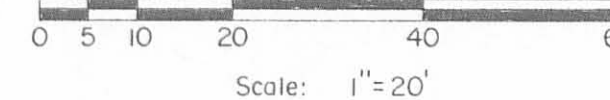
Thoman Brothers Super Market, Inc. Resurvey
Section No. 27 T.5 R.13, B.M.R.S., Village of West Liberty,
Liberty Township, Logan County, Ohio.

SCALE 1" = 20'	APPROVED BY	DRAWN BY DEG
DATE 5-8-1996		

Daniel E. Gilbert
Daniel E. Gilbert, P.S.
Reg. Sur. No. 5402

DRAWING NUMBER
096-033

MAP ROOM



N

87

Atha - King Survey West Liberty July 1962 0.28 Acre

The following described land in the Village of West Liberty Liberty Township Logan County Ohio and being in Section 27 Town 5 Range 13

Beginning at a wood post at the S.W. corner of Max E. Yoder's 2.77 acre tract which is also the S.E. corner of Loren S. King's present 0.37 acre tract and said post being in the north line of LaVerne Atha's present 5.63 acre tract.

Thence with the south side of said Loren S. King's 0.37 acre tract N. 84 - 30 W. 186.50 feet to an iron at the S.W. corner of said 0.37 acre tract. and also being the S.E. corner of Loren S. King's present 0.48 acre tract

Thence with the south side of said King 0.48 acre tract S. 71 - 02 W. 136.90 feet to a PK nail in the tangent center line of State Highway Number 189 known as U.S. Route Number 68.

Thence with the tangent center line of said U.S. Route Number 68 S. 20 - 04 E. 45.80 feet to a PK nail.

Thence N. 76 - 56 E. 306.75 feet to the place of beginning.

The above described tract contains 0.28 of one acre and being out of the N.W. corner of LaVerne Atha's present 5.63 acre tract.

cc
Logan County Engineer



on Plat Book
D.E.C.

INDEXED ON MAP

3271 2D -1

King Survey West Liberty August 1962 1.13 Acres

The following described land in the Village of West Liberty, Liberty Township, Ohio, and being in Section 27 Town 5 Range 13

Beginnin at a point in the center line of U.S. Route Number 68 (Detroit Street) at the S.W. corner of Phyllis Roberts 0.91 acre tract which is also the N.W. corner of Loren S. King's 0.48 acre tract sometimes refered to as the " Mill Lot ". Said point being 411.05 feet south of the center line of Baird Street when measured on the center ~~line~~ line of Detroit Street.

Thence with the south line of the Roberts 0.91 acre tract S. 88 - 46 E. 140.27 feet to an iron at the N.E. corner of the " Mill Lot ".

Thence with the west line of the Roberts 0.91 acre tract S. 00 - 05 W. 37.70 feet to an iron, at the N.W. corner of a 0.37 acre tract.

Thence with the south side of the Roberts 0.91 acre tract and the north side of a 0.37 acre tract S. 87 - 25 E. 165.40 feet to a iron in the west line of Max E. Yoder's 2.77 acre tract.

Thence with the west line of said Yoder's 2.77 acre tract S. 12 - 19 E. 100.00 feet to a post at the S.W. corner of the Yoder 2.77 acre tract.

Thence S. 76 - 56 W. 306.75 feet to nail in the center line of U.S.Route Number 68.

Thence with the tangent center line of U.S.Route Number 68 N. 20 - 04 W. 87.55 feet to a nail. The last described line passing the S.W. corner of the " Mill Lot " at 45.80 feet.

Thence with the tangent center line of U.S. Route Number 68 N. 1 - 14 E. 133.39 feet to the place of beginning.

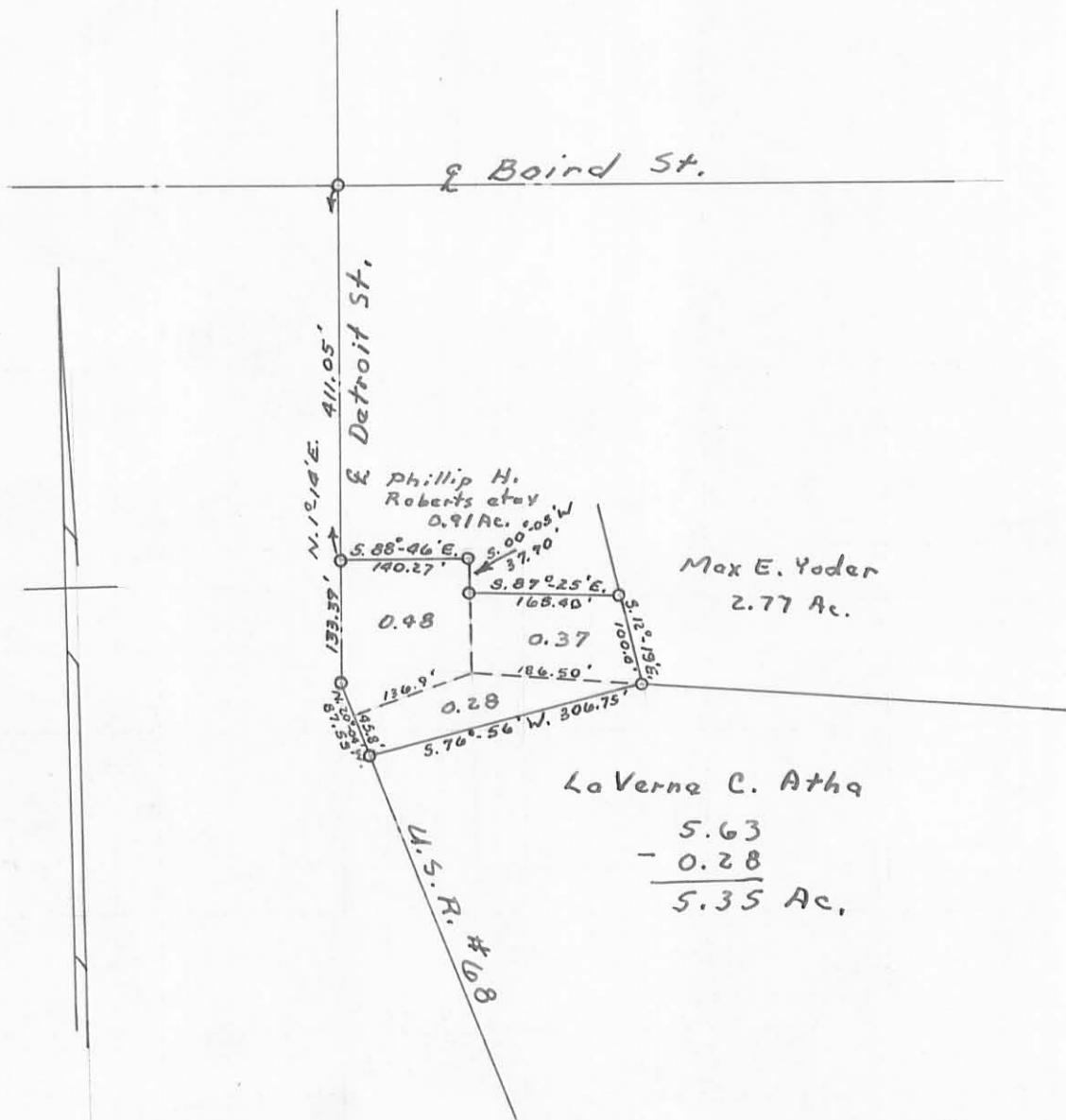
The above described contains 1.13 acres.

cc
Logan County Engineer



INDEXED ON MAP

3271 2D-2



King Survey
 Sec. 27 T-5 R. 13
 West Liberty Corp.
 Liberty Township
 Surveyed by F.F. Wright
 August 1962
 Scale: 1" = 200'

Total Acres in Survey - 113 Ac.

INDEXED ON MAP

3271 2P