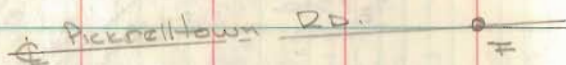


FB 708

SURVEY FOR
VILLAGE OF WEST LIBERTY
ACCESS RD. FROM PARK
TO S.R. 245

POINTS A-E-D ARE STRAIGHT
LINE = SEC. LINE

A to D Calc. Dist 2145.58



- A = P-K over stone & S.R. 245 @ Sec. line
- B = Small spike found & Proposed U.S. 68
- C = 3/4" ϕ Bar Found " " "
- Sta. 40+00 on T.R. 174 & 53+40.68 on U.S. 68
- D = 1" ϕ Bar found Set by State Hwy Dept. Sta. 38+10.64 T.R. 174
- E = 1/2" pipe Found Sta. 31+19.69
- F = R.B. spk found Set by S.H.D. Sta. 20+19.46

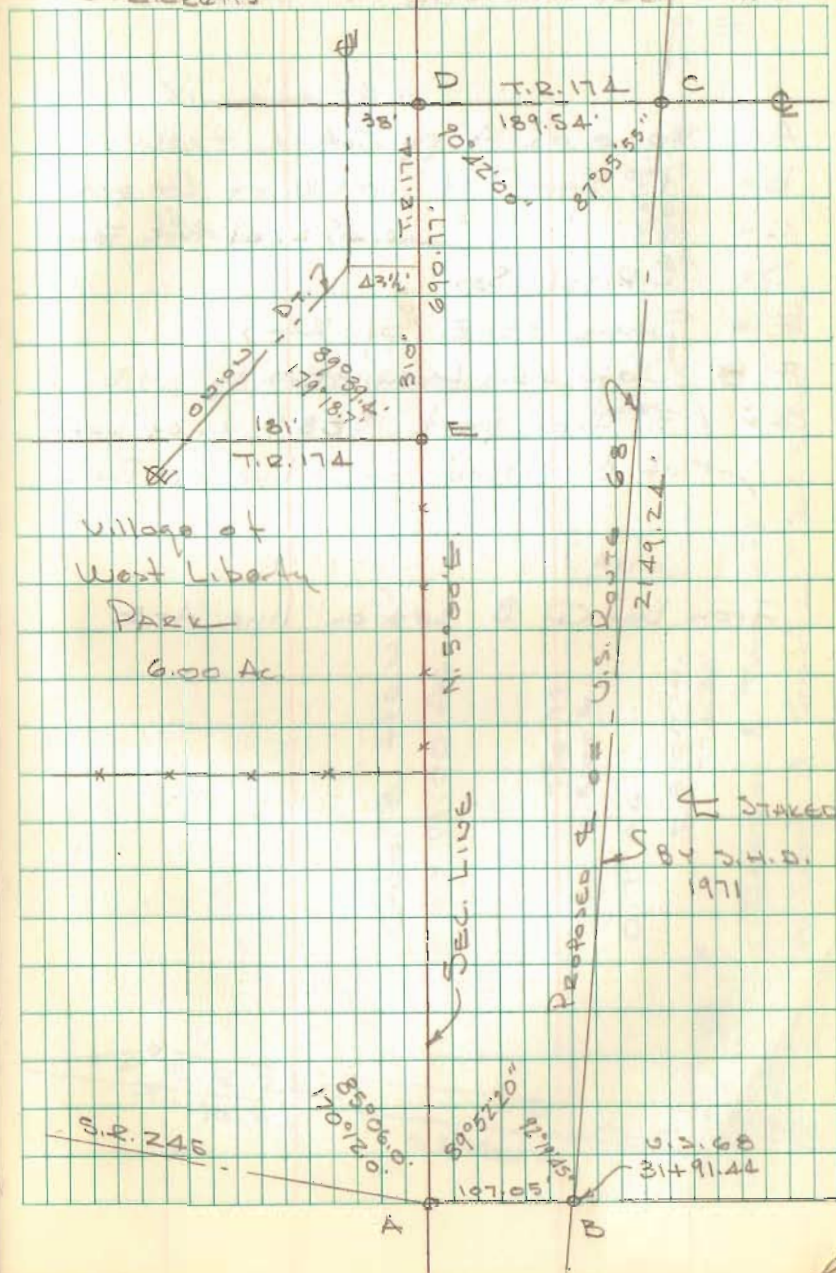
4994

INDEXED ON MAP

L. Goeslin
C. Nichols
C. Ricketts

4/3/72

24

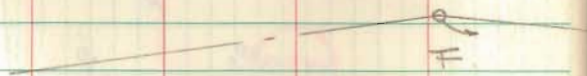


ACCESS ROAD TO PARK CONT'D.
WEST LIBERTY, OHIO

FB 708

- A = Same as A pg. 24
- B = 1" ϕ Bar Set 1.0' \pm W. of Cor. post
- C = " " " 0.2' S. of Park Fence
- D = R.R. spike Set
- E = Same as E pg. 24
- F = Date nail found - Set by S.H.D.
- G = 3" Iron post 385.5 W. of post at B - Used for S. line of Park

Iron bar @ B set on line A-E



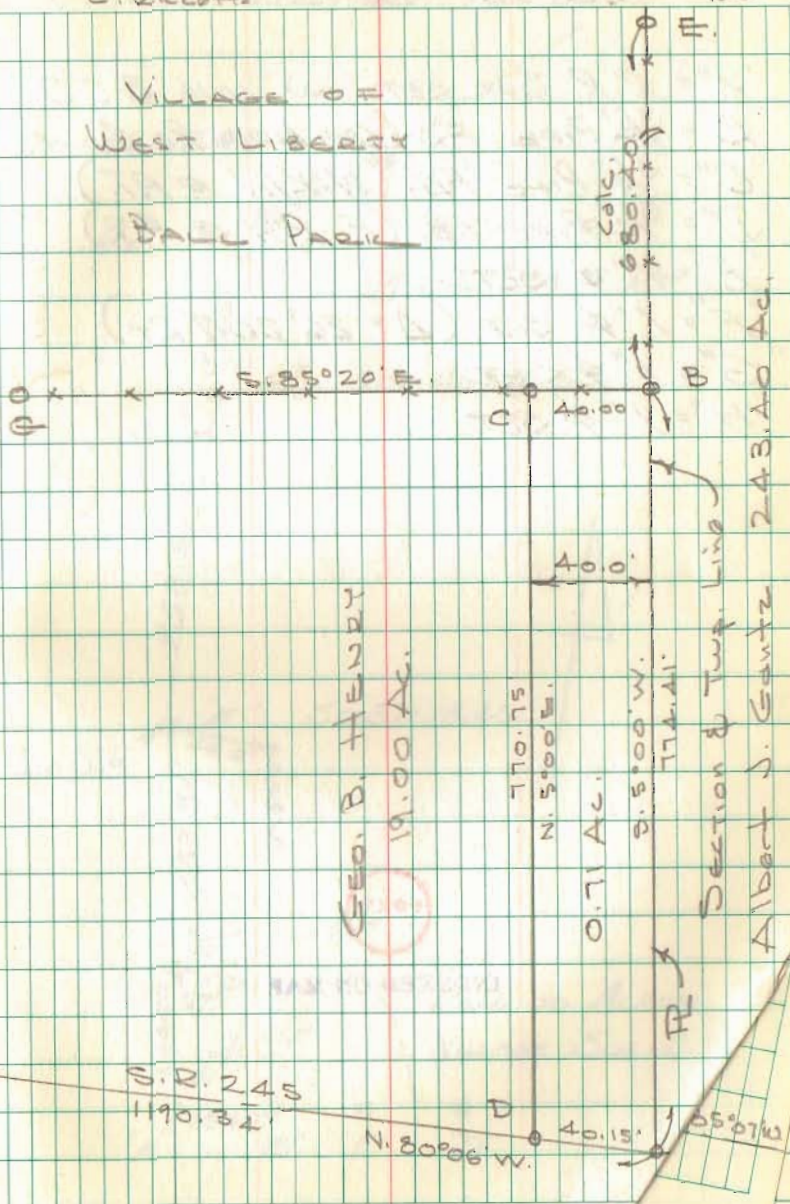
L. Geeslin
C. Nichols
C. Rickotts

A14172

25

VILLAGE OF
WEST LIBERTY

Ball Park



Geo. B. Hendry

19.00 AC.

770.75
N. 5° 00' E.

0.71 AC.

S. 5° 00' W.
774.41'

Section & Twp. Line

Albert J. Gantz

243.40 AC.

S. R. 245
1190.32'

N. 80° 06' W.

40.15'

35° 10' W.