

LESLIE H. GEESLIN
REGISTERED SURVEYOR NO. 5248
P O. BOX 274
RUSHSVLVANIA, OHIO 43347

TELEPHONE: (513) 468-2793

HOSTETLER SURVEY
April, 1989



Leslie H. Geeslin

The following described real estate situated in the State of Ohio, County of Logan, Township of Liberty, being part of NEW NUMBER 163 Lot One of Glover Addition No. 1 to the Village of West Liberty and more particularly described as follows:

Beginning at P. K. nail set at the southeast corner of said Lot 1 in the West line of Detroit Street and the north line of Runkle Street.

Thence with the north line of Runkle Street S. $89^{\circ} 42' 33''$ W. (This bearing is assumed and all other bearings are from angles and distances measured in this field survey) 70.19 feet to a 0.625 inch iron bar set.

Thence N. $00^{\circ} 27' 36''$ W. 51.50 feet to a point, passing a 0.625 inch iron bar set at 48.95 feet.

Thence S. $89^{\circ} 42' 33''$ W. 47.00 feet to a 0.625 inch iron bar set, passing a 0.625 inch iron bar set at 6.00 feet.

Thence N. $00^{\circ} 27' 36''$ W. 2.50 feet to a 0.625 inch iron bar set.

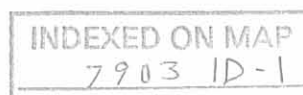
Thence S. $89^{\circ} 42' 33''$ W. 30.00 feet to a 0.625 inch iron bar set in the east line of a 16.5 foot alley.

Thence with said East line N. $00^{\circ} 27' 36''$ W. 25.44 feet to a 0.625 inch iron bar set at the southwest corner of Grace Yoder's tract as described in D. B. Vol. 328 Page 231.

Thence with said Yoder's North line N. $89^{\circ} 42' 33''$ E. 147.83 feet to a 0.625 inch iron bar set in the west line of Detroit Street.

Thence with said west line South 79.44 feet to the place of beginning.

Containing 0.176 acre more or less.



Received 4-18-89

OK 4-18-89 C.R

LESLIE H. GEESLIN
REGISTERED SURVEYOR NO. 5248
P. O. BOX 274
RUSHSVLVANIA, OHIO 43347

TELEPHONE: (513) 468-2793

HOSTETLER SURVEY
April, 1989

The following described real estate situated in the State of Ohio,
County of Logan, Township of Liberty, being part of Lot One ^{NEW NUMBER 143} of Glover
Addition No. 1 to the Village of West Liberty and more particularly
described as follows:

Beginning at a 0.625 inch iron bar set in the North line of Runkle
Street that is S. 89° 42' 33" W. 70.19 from a P. K. nail set at the
^{southeast}
southwest corner of said Lot 1.

Thence with the south line of Runkle Street S. 89° 42' 33" W. 77.00
(THIS BEARING IS ASSUMED AND ALL OTHER BEARINGS ARE FROM ANGLES AND
DISTANCES MEASURED IN THIS FIELD SURVEY)
feet to a 0.625 inch iron bar set.

Thence with the east line of a 16.5 foot alley N. 00° 27' 36" W.
54.00 feet to a 0.625 inch iron bar set.

Thence N. 89° 42' 33" E. 30.00 feet to a 0.625 inch iron bar set.

Thence S. 00° 27' 36" E. 2.50 feet to a 0.625 inch iron bar set.

Thence N. 89° 42' 33" E. 47.00 feet to a point, passing a 0.625 inch
iron bar set at 41.00 feet.

Thence S. 00° 27' 36" E. 51.50 feet to the place of beginning,
passing a 0.625 inch iron bar set at 2.55 feet.

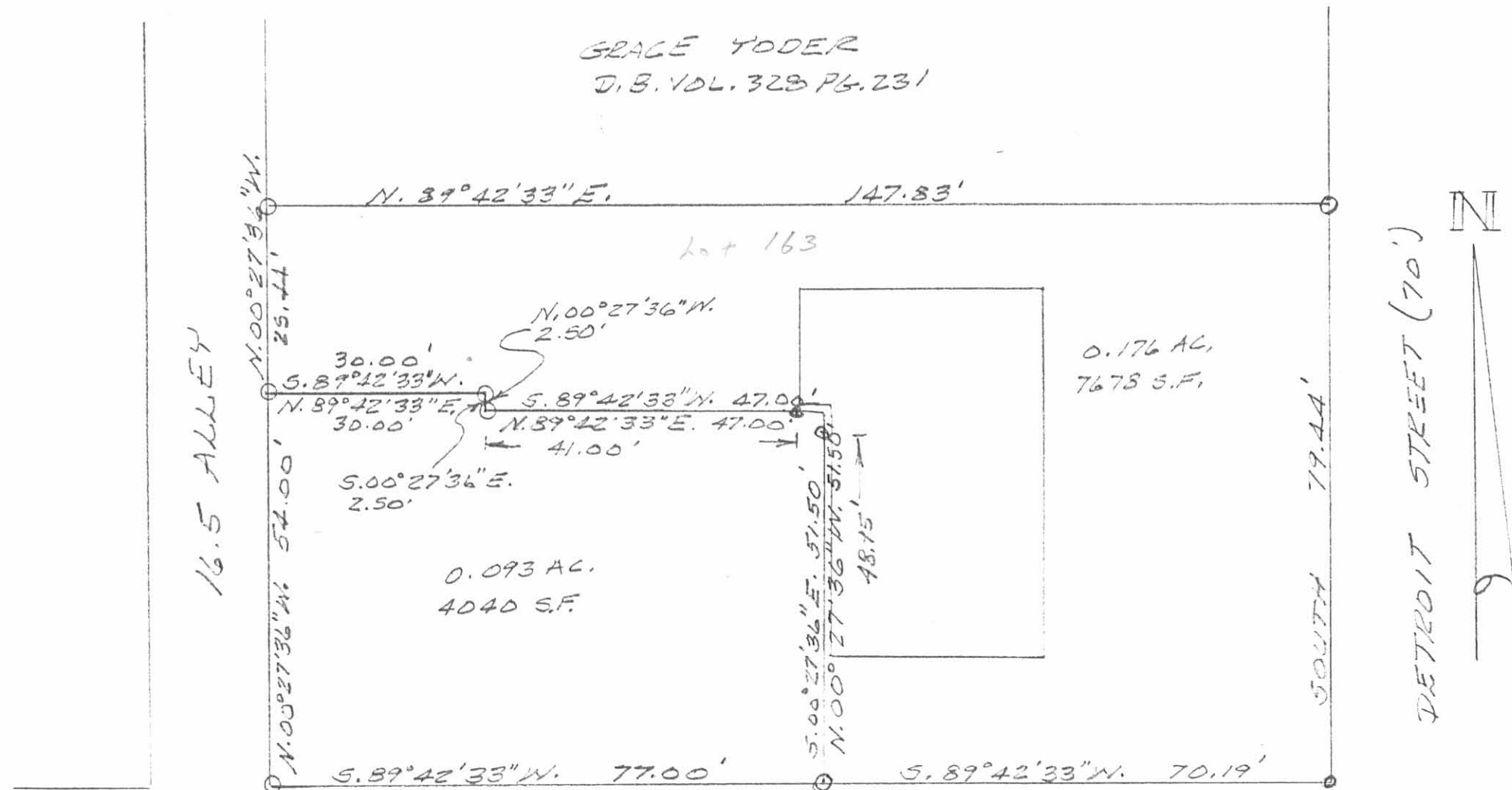
Containing 0.093 acre more or less.



Leslie H. Geeslin

INDEXED ON MAP
7903 1D/2

GRACE YODER
D.B. VOL. 328 PG. 231



16.5 ALLEY

Lot 163

0.176 AC.
7678 S.F.

0.093 AC.
4040 S.F.

SOUTH 79.44'

DETROIT STREET (70')



RUNKLE ST. (60')

SURVEY OF PT. OF LOT NO. 1 OF
GLOVER ADDITION NO. 1 TO
THE VILLAGE OF WEST LIBERTY,
OHIO FOR CONRAD & MICHAEL
HOSTETLER.

APRIL, 1989
SCALE: 1" = 20'

LEGEND:
O = P.K. NAIL SET
O = 5/8" IRON BAR SET

INDEXED ON MAP
7903 1P



Leslie H. Geeslin
LESLIE H. GEESLIN
RUSHsylvania, OHIO