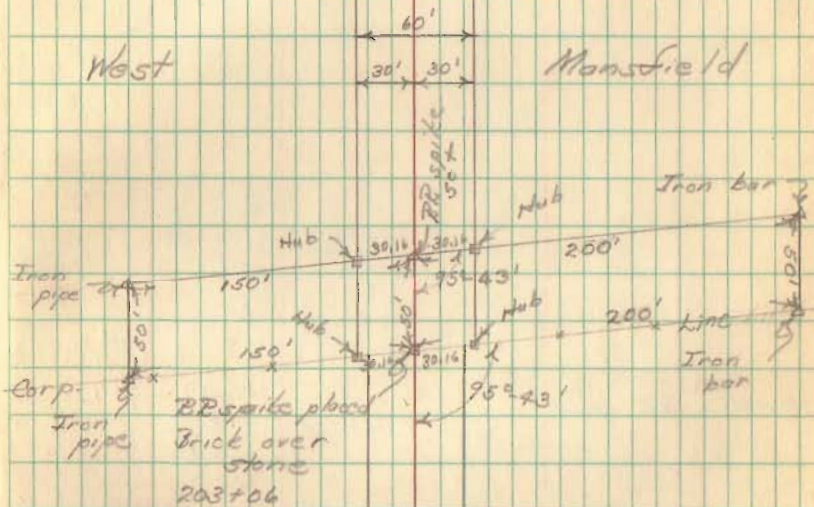


Survey of G.I. Lots in  
West Mansfield

Party:-  
E. Core  
C. Keyser  
G. Higgins  
J. Conman

20 Nov. 47  
Fair-weather

74



1988

Indexed on map.

Iron found  
See FB 615  
pg 45

Rd 12 from Sta 71  
to Sta 236

84+00 RR spike

78+00 RR spike

71+00 RR spike

Party:  
C. Kayser  
P. James  
D. Dodson  
N. Keyser

See pg 33

22 Dec 47

Sta 236

Cold

75

Route 47

Iron see  
Bl. 574 pg 24

82+30

10"-32' OIP

81+31

Yard

80+97 Drive

Yard

80+35

78+06 Gate

Gate 77+30

Gate 77+19

Yard

76+60

76+42 Drive

75+53

10"-35' OIP

Gate 74+80

Gate 75+07

72+90 Drive to barn