

FB 713

Brg. 140 - 1.41 site survey
Zane Twp.
Logan Co., Ohio

57+36.58 - Set $\frac{5}{8}$ " dia. capped
iron bar as per notes in
F.B.K. # 513, pg. 42
33°-36'-13" Rt.

56+59.58 - Fd. stone w/ pc. of vit.
tile on top + pcs. of brick -
Set $\frac{5}{8}$ " dia. capped rebar (14" long)
over stone to surface - placed
pc. of vit. tile back on top of
stone. - Ref: F.B.K. # 513, pg. 42.

52+41.95 - P.O.T. - Set mag nail

42+91.05 - P.O.T. - Set mag nail

34+79.48 - P.O.T. - Set R.R. Spike

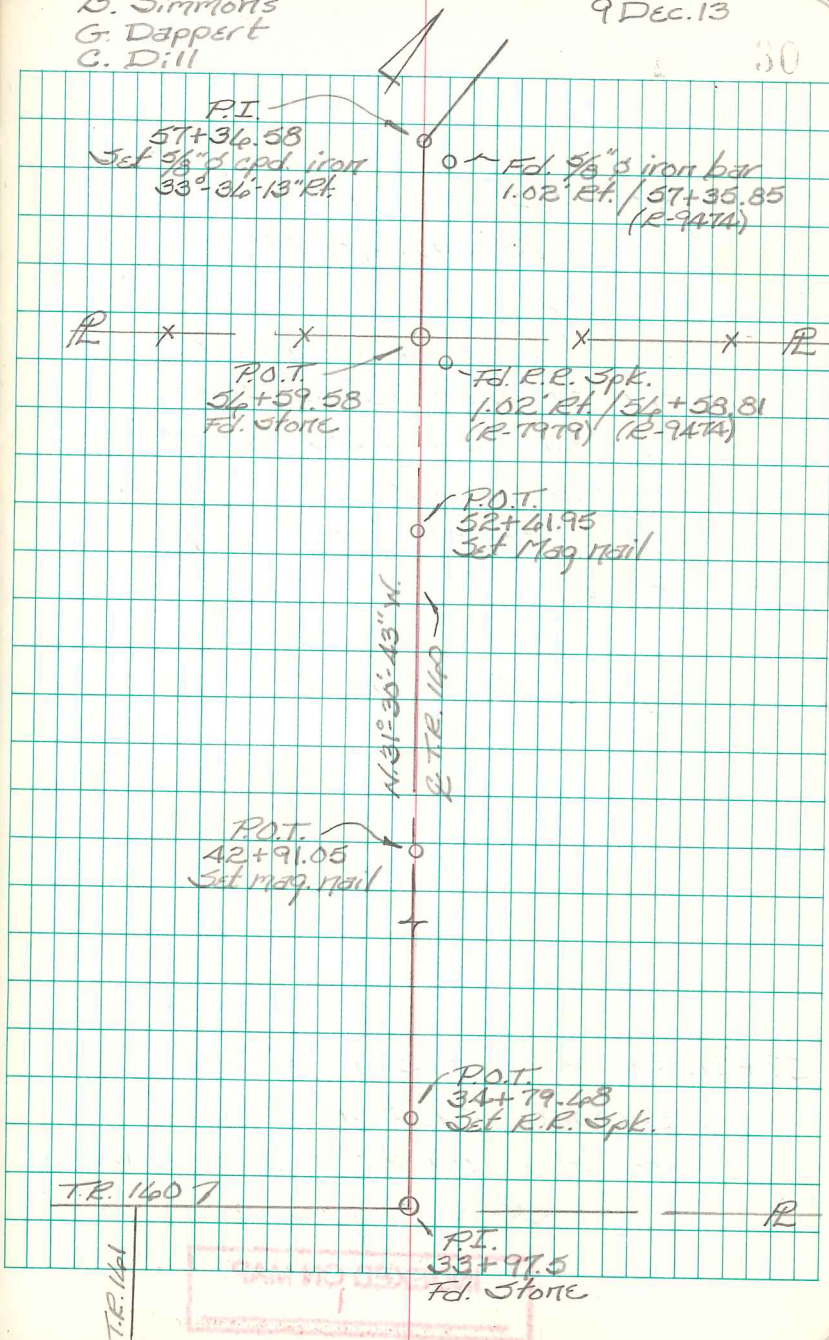
33+97.5 - P.I. - Fd. stone near
surface (≈ 2 " deep) - Start
of this survey - Ref: F.B.K. #
513, pg. 42; R-216;
R-7979

INDEXED ON MAP
1419

B. Simmons
G. Dappert
C. Dill

9 Dec. 13

30



FB 713

Brq. 140-1.41 site survey
Zane Twp.
Logan Co., Ohio

45+71.43 - P.I. - Set R.R. Spike -
shown as Sta. 46+00 on
R/W plan X-140 - Established
line of forward tangent by
splitting bridge as shown
in F.Bk. # 513 & plan X-140 -
measured back from C.R. AA
to establish length of forward
tangent.

$$75+41.5 - 46+00 = 961.5'$$

$$14^{\circ} - 59' - 19'' \text{ Lt.}$$

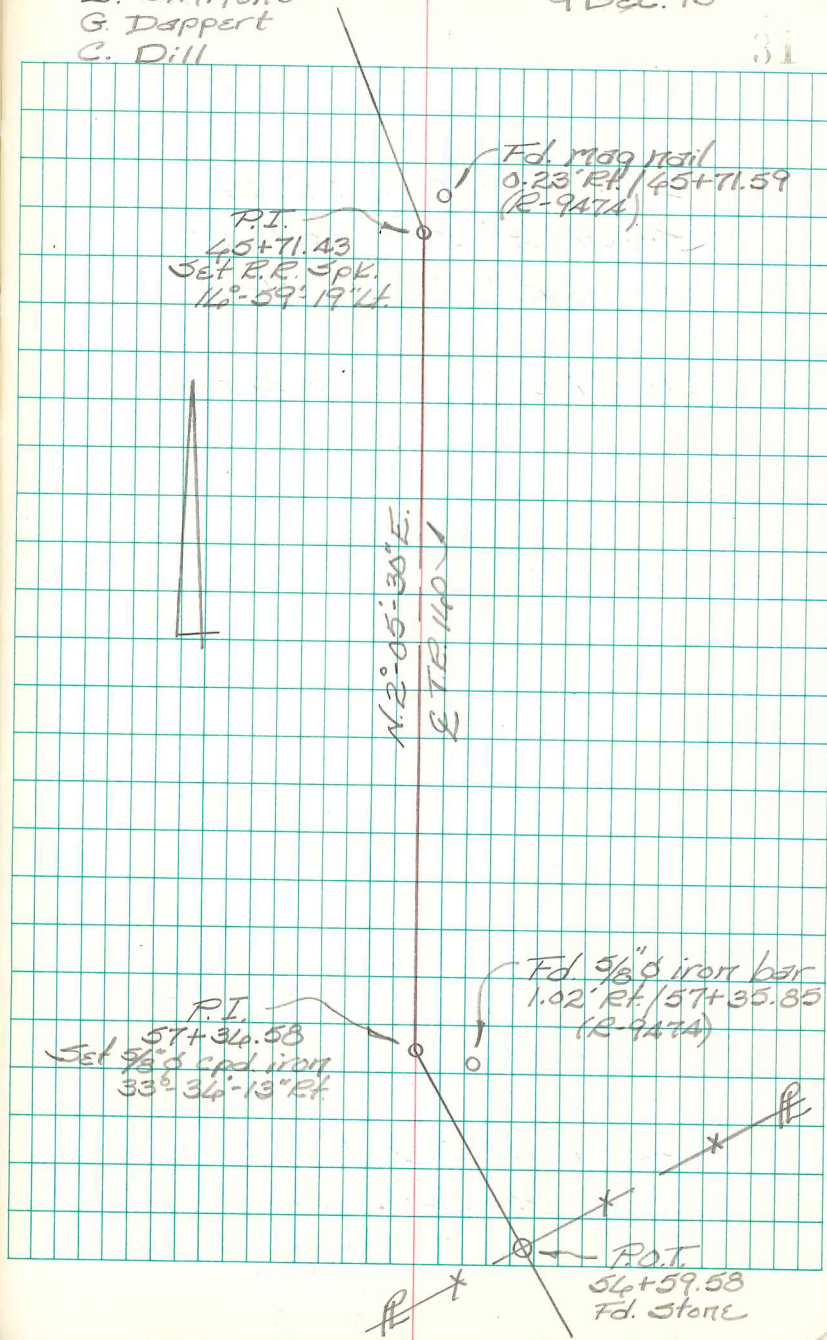
57+36.58 - P.I. - Set $\frac{5}{8}$ " dia.
capped iron bar as per
notes in F.Bk. # 513, pg. 12.
 $33^{\circ} - 34' - 13'' \text{ Rt.}$

INDEXED ON MAP
1419

B. Simmons
G. Dappert
C. Dill

9 Dec. 13

31



FB 713

Brq. 140-1.41 site survey
 Zane Twp.
 Logan Co., Ohio

75+32.93 - P.I. - Fd. harrow tooth
 in monument box - Intersection
 of C.R. AA w/ of T.R. 140 -
 Shown as Sta. 75+61.5
 in F.B.K. #513, pg. AA

49+41.71 - P.O.T. - Set mag nail

47+20.77 - P.O.T. - Set mag nail

46+45.21 - P.O.T. - Set mag nail

45+71.43 - P.I. - Set R.R. Spike -
 Shown as Sta. 46+00 on
 R/W plan X-140.
 $14^{\circ}59'19''$ Lt.

B. Simmons
 G. Dappert
 C. Dill

9 Dec. 13

36

